

Product datasheet for **MG222645**

Anxa6 (NM_013472) Mouse Tagged ORF Clone

Product data:

Product Type:	Expression Plasmids
Product Name:	Anxa6 (NM_013472) Mouse Tagged ORF Clone
Tag:	TurboGFP
Symbol:	Anxa6
Synonyms:	Anx6; AnxVI; AW107198; Cabm; Camb
Mammalian Cell Selection:	Neomycin
Vector:	pCMV6-AC-GFP (PS100010)
E. coli Selection:	Ampicillin (100 ug/mL)



[View online »](#)

ORF Nucleotide
Sequence:

>MG222645 representing NM_013472
Red=Cloning site Blue=ORF Green=Tags(s)

TTTTGTAATACGACTCACTATAGGGCGGCCGGGAATTCGTCGACTGGATCCGGTACCGAGGAGATCTGCC
GCCGCGATCGCC

ATGGCCAAAATAGCACAGGGTGCCATGTACCGAGGCTCTGTCCACGACTCCCAGAGTTTGACGCCAAATC
AGGATGCTGAGGCCTTGTACACAGCCATGAAGGGCTTCGGCAGTGACAAGGAGTCCATACTGGAGCTGAT
CACCTCCCGCAGCAACAAGCAGAGGCAGGAGATCTGCCAGAATACAAGTCCCTGTATGGCAAGGACCTC
ATCGAAGACTTGAAGTATGAGTTGACGGGGAAGTTCGAGCGGCTGATAGTGAACCTGATGAGGCCACTTG
CCTATTGTGACGCCAAAGAGATTAAGACGCCATCTCGGGCGTTGGCACAGATGAGAAGTGCCTTATTGA
AATTTTGGCTTCCCGACCAATGAGCAGATGCACCAGCTGGTGGCCGCATACAAAGACGCCATGAGCGA
GACCTGGAATCTGACATCATTGGAGACTTCCGGCCACTCCAGAAGATGCTGGTGGTACTGCTCCAGG
GAACCCGGGAGAATGACGATGTTGTGAGCGAGGATTTGGTCCAGCAGGATGTCCAGGACCTGTATGAGGC
AGGGGAAGTGAATGGGGAACAGATGAGGCCAGTTCATCTACATCTTGGGAAACCGCAGCAAACAGCAC
CTACGACTGGTGTGTTGATGAGTATCTGAAGACCACAGGGAAGCCATCGAAGCCAGTATCAGAGGGGAGC
TGCTGGAGACTTGGAGAAGCTGATGTTGGCCGTGGTGAAGTGCATCCGAAGCACCCCGGAGATTTTGC
GGAAAGGCTGTTCAAAGCCATGAAGGGCTAGGGACCCGAGACAACACTCTGATCCGCATCATGGTCTCC
AGGAGCGAGCTGGATATGCTTGACATCCGGGAGATCTTCCGGACCAAGTATGAGAAGTCACTCTACAGCA
TGATCAAGAAATGATACTCCGGTGAATACAAGAAGGCTCTGCTGAAGCTGTGTGGAGGAGATGATGATGC
CGCTGGCCAGTCTTCCCGGAGGCAGCACAGGTGGCCTATCAGATGTGGGAACTTAGTGCAGTGTCCCGA
GTGAGCTGAAGGTAAGTGTGTGTCAGCCAATGATTTCAACCTGACGCTGATGCCAAGGCCCTGCGGA
AAGCCATGAAGGGAATTGGAAGTGAAGCCACCATCATCGACATCGTCAACCCAGGAGCAACGCCCA
GCGGCAGCAGATCCGGCAGACCTTCAAATCTCACTTTGGCCGGGATTTAATGGCTGACCTGAAGTCAGAG
ATCTCGGAGACCTGGCAAGGCTGATTCTGGGGCTCATGATGCCACCTGCCATTACGATGCTAAGCAGC
TGAAGAAAGCTATGGAGGGAGCCGGCACAGATGAAAAGACTCTCATAGAAATCCTGGCCACCCGGACCAA
TGCTGAAATCCGGGCCATCAACGAGGCCTACAAGGAGGATTATCACAAAGTCCCTGGAGGATGCCTTGAGC
TCAGACACATCTGGCCACTTCAGAAGGATTCTCATTTCTGACCACAGGAAATCGAGAGGAAGGAGGAG
AAAACCGGACCAGGCCAGGAAGTGCCAGGTGGCTGCTGAGATCTTGGAAATAGCAGACACCCCCAG
CGGAGACAAAACCTTCTTGGAGACACGCTTCATGACCGTCTGTGACCCGTAGCTATCCCACCTGCGC
AGAGTCTTCCAGGAGTTCATCAAGAAGCAACTATGACATAGAGCATGTATCAAGAAGGAGATGTCTG
GGGATGTCAAGGACGCATTTGTGGCCATCGTTCAGAGTGTCAAGAACAAGCCTCTCTTCTTGTGATAA
ACTGTACAAGTCCATGAAGGGTCTGGCACAGATGAGAAGACCCTCACAGGGTGTGGTGTCTCGGAGT
GAGATAGATCTGCTCAACATCCGGAGGGAATTCATTGAGAAATATGACAAGTCTTACACCAAGCCATTG
AGGGTGACACCTCTGGAGACTTCATGAAGGCTTTGCTTGTCTGTGTGGCGGAGAGGAC

ACGCGTACGCGGCCGCTCGAG – GFP Tag – GTTTAA

Protein Sequence: >MG222645 representing NM_013472
 Red=Cloning site Green=Tags(s)

```
MAKIAQGAMYRGSVHDFPEFDANQDAEALYTAMKGFSGDKESILELITSRSNKQRQEICQNYKSLYGKDL
IEDLKYELTGKFERLIVNLMRPLAYCDAKEIKDAISGVGTDEKCLIEILASRTNEQMHQLVAAYKDAYER
DLESIIIGDTSGHFQKMLVLLQGTRENDVVSSEDLVQQDVQDLYEAGELKWTDEAQFIYILGNRSKQH
LRLVFDEYLKTTGKPIEASIRGELSGDFEKLMLAVVKCIRSTPEYFAERLFKAMKGLGTRDNTLIRIMVS
RSELDMLDIREIFRTKYEKSLYSMIKNDTSGEYKALLKLCGGDDDAAGQFFPEAAQVAYQMWELSAVSR
VELKGTVCAANDFNPDADAKALRKAMKGIGTDEATIIDIIVTHRSNAQRQQIRQTFKSHFGRDLMADLKSE
ISGDLARLILGLMPPAHYDAKQLKKAMEGAGTDEKTLIEILATRTNAEIRAINAEYKEDYHKSLEDALS
SDTSGHFRRILISLATGNREEGGENRDQAQEDAQVAEILEIADTPSGDKTSLETRFMTVLCTRSYPHLR
RVFQEFIKKTNVDIEHVIKKEMSGDVKDAFVAIVQSVKNKPLFFADKLYKSMKGAGTDEKTLTRVMVSR
EIDLLNIRREFIEKYDKSLHQAIEGDTSGDFMKALLALCGGED
```

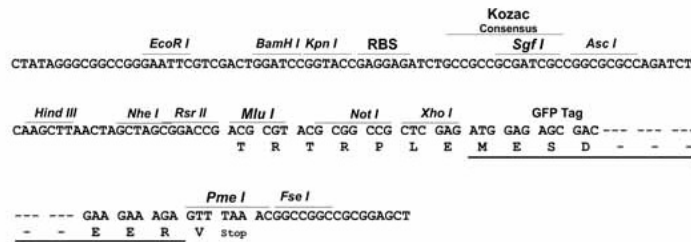
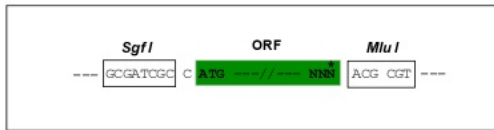
TRTRPLE - GFP Tag - V

Chromatograms: https://cdn.origene.com/chromatograms/ja2107_b01.zip

Restriction Sites: Sgfl-Mlul

Cloning Scheme:

Cloning sites used for ORF Shuttling:



ACCN: NM_013472

ORF Size: 2019 bp

OTI Disclaimer: Due to the inherent nature of this plasmid, standard methods to replicate additional amounts of DNA in E. coli are highly likely to result in mutations and/or rearrangements. Therefore, OriGene does not guarantee the capability to replicate this plasmid DNA. Additional amounts of DNA can be purchased from OriGene with batch-specific, full-sequence verification at a reduced cost. Please contact our customer care team at custsupport@origene.com or by calling 301.340.3188 option 3 for pricing and delivery.

The molecular sequence of this clone aligns with the gene accession number as a point of reference only. However, individual transcript sequences of the same gene can differ through naturally occurring variations (e.g. polymorphisms), each with its own valid existence. This clone is substantially in agreement with the reference, but a complete review of all prevailing variants is recommended prior to use. [More info](#)

OTI Annotation: This clone was engineered to express the complete ORF with an expression tag. Expression varies depending on the nature of the gene.

Components: The ORF clone is ion-exchange column purified and shipped in a 2D barcoded Matrix tube containing 10ug of transfection-ready, dried plasmid DNA (reconstitute with 100 ul of water).

Reconstitution Method:

1. Centrifuge at 5,000xg for 5min.
2. Carefully open the tube and add 100ul of sterile water to dissolve the DNA.
3. Close the tube and incubate for 10 minutes at room temperature.
4. Briefly vortex the tube and then do a quick spin (less than 5000xg) to concentrate the liquid at the bottom.
5. Store the suspended plasmid at -20°C. The DNA is stable for at least one year from date of shipping when stored at -20°C.

RefSeq: [NM_013472.5](#)

RefSeq Size: 2661 bp

RefSeq ORF: 2022 bp

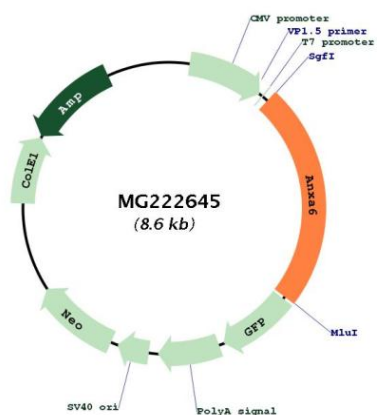
Locus ID: 11749

UniProt ID: [P14824](#)

Cytogenetics: 11 32.13 cM

Gene Summary: May associate with CD21. May regulate the release of Ca(2+) from intracellular stores. [UniProtKB/Swiss-Prot Function]

Product images:



Circular map for MG222645