

Product datasheet for **MG222641**

Hras (NM_001130444) Mouse Tagged ORF Clone

Product data:

Product Type: Expression Plasmids
Product Name: Hras (NM_001130444) Mouse Tagged ORF Clone
Tag: TurboGFP
Symbol: Hras
Synonyms: c-H-ras; c-Ha-ras; c-rasHa; H-ras; Ha-ras; Harvey-ras; Hras-1; Hras1; Kras2; ras
Mammalian Cell Selection: Neomycin
Vector: pCMV6-AC-GFP (PS100010)
E. coli Selection: Ampicillin (100 ug/mL)
ORF Nucleotide Sequence: >MG222641 representing NM_001130444
Red=Cloning site Blue=ORF Green=Tags(s)

TTTTGTAATACGACTCACTATAGGGCGGCCGGAATTCGTCGACTGGATCCGGTACCGAGGAGATCTGCC
GCC**CGATCGCC**

ATGACAGAATACAAGCTTGTGGTGGTGGGCGCTGGAGGCGTGGGAAAGAGTGCCCTGACCATCCAGCTGA
TCCAGAACCACCTTGTGGACGAGTATGATCCCACTATAGAGGACTCTACCGAAACAGGTGGTCATTGA
TGGGGAGACATGTCTACTGGACATCTTAGACACAGCAGGTCGAAGAAGAGTATAGTCCATGCGGGACCAG
TACATGCGCACAGGGGAGGGCTTCTCTGTGTATTTGCCATCAACAACACCAAGTCTTCGAGGACATCC
ATCAGTACAGGGAGCAGATCAAGCGGGTAAAAGATTGAGATGATGTCCAATGGTGTGGTGGGCAACAA
GTGTGACCTGGCTGCTCGCACTGTTGAGTCTCGGCAGGCCAGGACCTTGCTCGCAGCTATGGCATCCCC
TACATTGAAACATCAGCCAAGACCCGGCAGGGCAGCCGCTCTGGCTCCAGCTCCGGGACCCCTCTGGGATC
CCCCCTCCCCGGGACCCATGTGACCCAGCGGCCCTCAAGCTGGCGTGGAGGATGCCCTTCTATACTAG
TCCG

ACGCGTACGCGGCCGCTCGAG - GFP Tag - GTTTAA

Protein Sequence: >MG222641 representing NM_001130444
Red=Cloning site Green=Tags(s)

MTEYKLVVVGAGGVGKSALTIQLIQNHFVDEYDPTIEDSYRKQVVIDGETCLLDILDITAGQEEYSAMRDQ
YMRTGEGFLCVFAINNTKSFEDIHQYREIQKRVKSDDDVPMVLVGNKCDLAARTVESRQAQDLARSYGIP
YIETSAKTRQGSRSGLWDPSPGTHVTQRPSSWRGGCLLYTSP

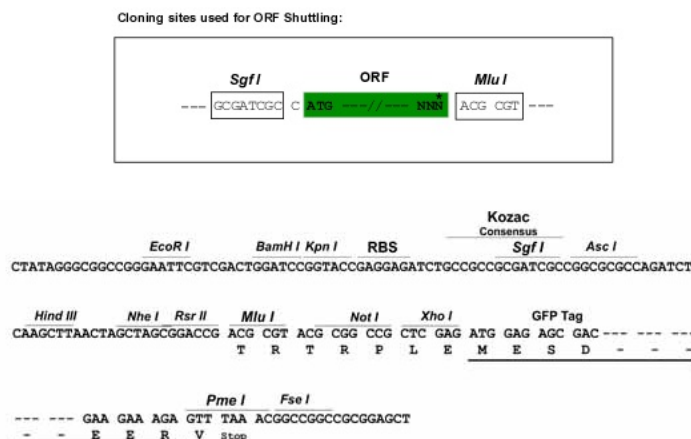
TRTRPLE - GFP Tag - V

Restriction Sites: Sgfl-MluI



[View online »](#)

Cloning Scheme:



Plasmid Map:



ACCN: NM_001130444

ORF Size: 564 bp

OTI Disclaimer: The molecular sequence of this clone aligns with the gene accession number as a point of reference only. However, individual transcript sequences of the same gene can differ through naturally occurring variations (e.g. polymorphisms), each with its own valid existence. This clone is substantially in agreement with the reference, but a complete review of all prevailing variants is recommended prior to use. [More info](#)

OTI Annotation: This clone was engineered to express the complete ORF with an expression tag. Expression varies depending on the nature of the gene.

Components: The ORF clone is ion-exchange column purified and shipped in a 2D barcoded Matrix tube containing 10ug of transfection-ready, dried plasmid DNA (reconstitute with 100 ul of water).

Reconstitution Method:

1. Centrifuge at 5,000xg for 5min.
2. Carefully open the tube and add 100ul of sterile water to dissolve the DNA.
3. Close the tube and incubate for 10 minutes at room temperature.
4. Briefly vortex the tube and then do a quick spin (less than 5000xg) to concentrate the liquid at the bottom.
5. Store the suspended plasmid at -20°C. The DNA is stable for at least one year from date of shipping when stored at -20°C.

RefSeq: [NM_001130444.1](#), [NP_001123916.1](#)

RefSeq Size: 2272 bp

RefSeq ORF: 567 bp

Locus ID: 15461

UniProt ID: [Q61411](#)

Cytogenetics: 7 86.48 cM

Gene Summary: Ras proteins bind GDP/GTP and possess intrinsic GTPase activity.[UniProtKB/Swiss-Prot Function]