

Product datasheet for **MG222629**

Ltk (NM_203345) Mouse Tagged ORF Clone

Product data:

Product Type:	Expression Plasmids
Product Name:	Ltk (NM_203345) Mouse Tagged ORF Clone
Tag:	TurboGFP
Symbol:	Ltk
Mammalian Cell Selection:	Neomycin
Vector:	pCMV6-AC-GFP (PS100010)
E. coli Selection:	Ampicillin (100 ug/mL)



[View online »](#)

ORF Nucleotide
Sequence:

>MG222629 representing NM_203345
 Red=Cloning site Blue=ORF Green=Tags(s)

TTTTGTAATACGACTCACTATAGGGCGGCCGGGAATTCGTCGACTGGATCCGGTACCGAGGAGATCTGCC
 GCCCGGATCGCC

ATGGGCTGCTCCCACCGCTGCTGCTGTGGCTGGGAGCTGCTGGAATATTCTTTGCTCCAACCTCGGAGT
 TCCAGACACCTTTTCTAACACCTTCGCTTTTGCCGGTGTGGTACTCAATTCACAGGAGCAGAAAGTCAC
 CCCCACACCCAGTAAATTGGAGCCAGCTTCCCTCCCAAATCCTCTAGGCACACGGGGCCTTGGGTGTTT
 AACACCTGTGGCGCCAGCGGCAGGAGCGGACCCACACAAACACAGTGCATGGGGCATACACAGGAAGCA
 GCGTGATGGTGACAGTGGGGGCTGCCGGCCGCTCAAAGCGTGCAGCTGTGGCGGTGCCAGACACAGG
 CCAGTATCTGATCTCCGCTACGGAGCGCGGGCCGAAGGGCGCCAAAACACCTGTCACGGGCGCAC
 GGCATCTCTCTCAGCAGTCTTCTTCCGTCGCGGGAGCCGGTGTACATCCTTGTGGGGCAGCAGG
 GCCAGGACGCTGTCCCAGGGAGCCCTGAGAGCCAACCTGTCTGTCTGGGAGAGTCTGGGGAGCATGC
 AACACCTATGGACCGAAAGGATCCCAGGCTGGAGACGCTGGGCCGGCGGGGGCGGGGTGGCGGAGGC
 GCCACCTCCATCTTCCGGCTGCGCGCGGGGAGCCAGAGCCGCTGCTGGTGGCGGGGAGGCGCGGGGA
 GGTCTACCGGAGGCGACCTGACCGCGCCGACTCAGGCCGTCCCGAGAGGCTGGAGACCCGCGCGGC
 GGCGCCGGGACAGCGGGGAGAGGAGGCGCGCAGGTGGAGGGAGCGGCTGGACGTCCGAGAGCCACTCT
 CCGCAGGCCGACGCTCGCCGCGGAAGGGGCCGAGGGCGCGGAGGGCTGCGCGGAGGCCTGGGCTGCGC
 TCCGCTGGGTGCGGGCGGAGGCTTCCGGGGCGCGCGGGGCTGCGCGGGCGGGCGGGTGGCGGGCGG
 CTACCGGGGCGGTGATACTTCTGAGTCTGACCTCCTCTGGGTGATGGGAAGATGGCACATCCTTTGTC
 CACCCAGTGGTGGTCTACCTACAGCCTTGGCAGTGCAGAGGGCCATGGGGAGTGGAGATCCGAA
 AGCATCCCAACTGCAGTCACTGCCCTTCAAAGACTGCCAGTGGCAGGCGAGAGCTCTGGAGCCGAA
 CACGTGCCCAGAGGGCACGGAGCTAGCTGGATAATGTCACTTGCATGGACTGCCAACCCAGCAAGC
 CCTCTGATCCTGATGGGAGCTGTAGTGGCAGCCTTGGCACTGAGTCTCCTAATGATGTGTGACGTCCTGA
 TTCTAGTGAACCAGAAGTGTGAGGCTGTGGGGACCAGGCTGCCAGGCCCTGAGCTTGAAGTAAAGCA
 GCTTCGATCCTCTGCCATCAGGACAGCACCCAACCCCTTACTATTGTGAGGTGGGACTCAGTCTGCCAG
 CCCTGGCCTTTGCCCCAGGGCTCACTGAGGTTTACCAGCCAATGTCACTCTACTCAGAGCCCTTGGCC
 ATGGTGCCTTTGGGAAGTGTACGAGGGACTAGTACTGGTCTTCTGGGACTCCAGTCTCTTCCAGT
 GGCTATTAAGACTCTGCCAGAGCTCTGCTCCCATCAGGATGAGCTGGATTTTCTCATGGAGGCTCTGATC
 ATCAGCAAGTTCAGCCATCAGAACATTGTACGCTGTGTGGGCTCAGCTTTCGGTCTGCCCCGCGCTCA
 TTCTGCTGGAGCTGATGTCTGGTGGGACATGAAGAGCTTTTGGAGCACAGCAGACCACCCAGGACA
 ACTGGCACCTCTGACCATGCAGGACCTATTGCAGCTGGCCAGGATATAGCCAGGGCTGCCACTACCTG
 GAGGAAAATCACTTCATTACAGAGACATTGCTGCCCGTAACTGTCTGCTTAGCTGCAGTGGAGCCAGCC
 GAGTGGCCAAGATTGGAGATTTTGGAAATGGCAAGAGATATCTACCAGGCCAGTTATTATCGCAAGGGTGG
 CCGGACCTTGCTCCAGTCAAGTGGATGCCCGCAGAAGCTCTCCTGGAGGGCCTTTTACATCCAAGACA
 GACTCCTGGTCTTTTGGGTCTGCTCTGGGAGATCTTCTCACTGGGGTATATGCCCTACCTGGACATA
 CCAACCAGGAGGTTCTAGACTTATTGCCACAGGGAACAGGATGGACCCCTAGGAATGTCCTGGGCC
 AGTGTACCGAATCATGACCCAGTGTGGCAGCATCAGCCGAGCTCCGCCCTGACTTTGGCAGCATCTTG
 GAACGGATTCACTACTGCACTCAGGACCCGATGTGTGTAACCTACCCCTGCCCGTGAACCTGGGCCCCA
 TTCTAGAGGAGGAAGAGGCTCCAGGCTGGGAAACAGGTCAGTGGAGGCTTAGATCCCAAAGGCCCT
 AGAGCTGAGTTCTCAGAACTTGAAGAGCTGGGAGGAGGCTTCTTGGCTCTTGGCTGCCCTCTGGCCTC
 AAGACCCCAAACCCAGGTGCCTCAACCTCAGAACATTTGGAACCCACCTATGGCTCTGGACCCCAA
 GGGGCCCCAGGGTGAAGATACAGGCATTGAACACTGCAATGGCTCCTCCTCAAGTTCATTCCAGGCAT
 CCAG

ACGCGTACGCGGCCGCTCGAG - GFP Tag - GTTTAA

Protein Sequence: >MG222629 representing NM_203345
 Red=Cloning site Green=Tags(s)

```

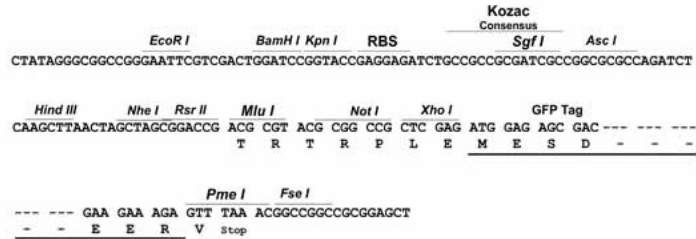
MGCSHRLLLWGAAGTILCSNSEFQTPFLTPSLLPVLVLSQEQKVTPTPSKLEPASLPNPLGTRGPWVF
NTCGASGRSGPTQTQCDGAYTGSSVMVTGAAGPLKGVQLWRVPDTGQYLISAYGAAGGKGAQNHLSTRAH
GIFLSAVFFLRRGEPVYILVGQQGDACPGGSPESQLVCLGESGEHATTYGTERIPGWRRWAGGGGGGGG
ATSIFRLRAGEPEPLLVAAGGGGRSYRRRDRGRTQAVPERLETRAAAPGSGGRGAAGGGSGWTSRAHS
PQAGRSPREGAEGGCAEAWAALRWAAAGGFGGGGACAAGGGGGYRGGDTSESDLLWADGEDTSFV
HPSGELYLQPLAVTEGHGEVEIRKHPNC SHCPFKDCQWQAE LWTAECTCEGTELAVDNVT CMDLPTTAS
PLILMGAVVAALAL SLLMCAVLILVNQKCQGLWGTRLPGELELSKLRSSAIRTAPNPYYCQVGLSPAQ
PWPLPPGLETVSPANVTLLRALGHGAFGEVYEGLVTGLPGDSSPLPVAIKTLPELCSHQDELDFLMEALI
ISKFSHQNI VRCVGLSFRSAPRILLEMSGGDMKSFLRHSRPHPGQLAPLTMQDLLQLAQDIAQGCHYL
EENHFIHRDIAARNCLLSCSGASRVAKIGDFGMARDIYQASYYRKGGR TLLPVKWPPEALLEGLFTSKT
DSWSFGVLLWEIFSLGYMPYPGHTNQEVLDFIATGNRMDPPRNC PGPVYRIMTQCWQHQP ELPDFGSIL
ERIQYCTQDPDVLNSPLPVEPGPILEEEEA SRLGNRSLEGLRSPKPLELSSQNLKSWGGGLLGSWLP SGL
KTLKPRCLQPQNIWNPTYGSWTPRGPQGEDTGIEHCNGSSSSSIPGIQ
  
```

TRTRPLE - GFP Tag - V

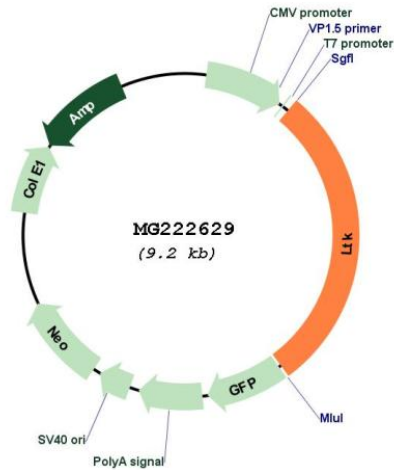
Restriction Sites: Sgfl-MluI

Cloning Scheme:

Cloning sites used for ORF Shutting:



Plasmid Map:



ACCN:	NM_203345
ORF Size:	2664 bp
OTI Disclaimer:	The molecular sequence of this clone aligns with the gene accession number as a point of reference only. However, individual transcript sequences of the same gene can differ through naturally occurring variations (e.g. polymorphisms), each with its own valid existence. This clone is substantially in agreement with the reference, but a complete review of all prevailing variants is recommended prior to use. More info
OTI Annotation:	This clone was engineered to express the complete ORF with an expression tag. Expression varies depending on the nature of the gene.
Components:	The ORF clone is ion-exchange column purified and shipped in a 2D barcoded Matrix tube containing 10ug of transfection-ready, dried plasmid DNA (reconstitute with 100 ul of water).
Reconstitution Method:	<ol style="list-style-type: none">1. Centrifuge at 5,000xg for 5min.2. Carefully open the tube and add 100ul of sterile water to dissolve the DNA.3. Close the tube and incubate for 10 minutes at room temperature.4. Briefly vortex the tube and then do a quick spin (less than 5000xg) to concentrate the liquid at the bottom.5. Store the suspended plasmid at -20°C. The DNA is stable for at least one year from date of shipping when stored at -20°C.
RefSeq:	NM_203345.2 , NP_976220.2
RefSeq Size:	3115 bp
RefSeq ORF:	2667 bp
Locus ID:	17005
UniProt ID:	P08923
Cytogenetics:	2 59.97 cM
Gene Summary:	The protein encoded by this gene is a member of the ros/insulin receptor family of tyrosine kinases. Tyrosine-specific phosphorylation of proteins is a key to the control of diverse pathways leading to cell growth and differentiation. Four alternatively spliced transcript variants encoding different isoforms have been described for this gene. These transcripts are expressed in a tissue-specific manner in lymphocytes, brain and neuroblastoma cells, and the encoded isoforms exhibit different subcellular localization. The lymphocyte and brain specific variants initiate translation at non-AUG (CUG) start codons. [provided by RefSeq, Jul 2008]