

Product datasheet for **MG222608**

Ate1 (NM_001136054) Mouse Tagged ORF Clone

Product data:

Product Type:	Expression Plasmids
Product Name:	Ate1 (NM_001136054) Mouse Tagged ORF Clone
Tag:	TurboGFP
Symbol:	Ate1
Synonyms:	A1225793; AW547406
Mammalian Cell Selection:	Neomycin
Vector:	pCMV6-AC-GFP (PS100010)
E. coli Selection:	Ampicillin (100 ug/mL)



[View online »](#)

ORF Nucleotide Sequence:

>MG222608 representing NM_001136054
 Red=Cloning site Blue=ORF Green=Tags(s)

TTTTGTAATACGACTCACTATAGGGCGGCCGGAATTCGTCGACTGGATCCGGTACCGAGGAGATCTGCC
 GCC**CGGATCGCC**

ATGGCTTCTTGGAGCGCCTTACCTAGCCTTGTAGAGTATTTGAGGGCCAGACCTCCTTCCAGTGTG
 GCTACTGCAAGAACAAGTTGGGCAGTCGCTCCTATGGCATGTGGGCACATTCCATGACAGTGCAGGATTA
 TCAGGATCTTATAGACCGAGGATGGAGAAGAAGTGGGAAATATGTGTACAAACCTGTCATGGATCAAACA
 TGCTGTCTCAGTATAACAATAAGGTGTCATCCTTTACAGTTTCAGCCATCAAAATCTCACAGAAAGTTT
 TGAAAAAATGCTGAAATTTCTGGCTAAAGGAGAGATCTCGAAAGGCAATTGTGAGGATGAGCCCATGGA
 TTCTACAGTGGAGGATGCTGTTGACGGTACTTTGCATTAATTAACAAGCTGGATATAAAGTGTGATCTC
 AAAACACTCAGTGACCTCAAAGGAAGCATAGAGAGTGAAGAGAAGGAGAAAGAAAAGAGTATAAAGAAAG
 AAGGGTCTAAAGAATTCATTCACCAATCTATAGAGGAGAAGTTGGGCTCTGGTGAACCATCACATCC
 AATCAAAGTTCATATTGGTCTAAGCCAGGCAAAGGGGCTGACTTGAGTAAGCCTCCATGTCGGAAGCA
 AGGAAAATGAGGAAAAGAAAGGCAAAGATTAAAACGGATGCAGCAGGCCTCAGCTGCAGCCTCGGAGGCTC
 AAGGTCAGCCAGTCTGTTTGTACCAAAGGCTAAATCCAACAGCCCAAGTCACTGGAAGATTTGATTTT
 TCAATCTTTACCAGAAAATGCATCGCACAAAGTTAGAGGTGAGGCTAGTACCTGCCTCCTTTGAGGACCCA
 GAGTTCAACTCATCCTTCAACAGTCTTTTTCTTTATATACCAAGTATCAAGTGGCTATACACCAGGAAG
 CACCTGAAATATGTGAAAAGTCTGAGTTACAAGATTCCTTTGCAGCTCACCATTTGGAGGCGAGACCCC
 TGCTGATGGACCAAGATGGTTATGGCTCCTTTACCAGCAGTACTGGCTCGATGGGAAGATCATTGCT
 GTGGGGGTGTTAGACATCTCCCGTACTGTGTCTTCTGTGTATCTCTACTACGATCCTGATTATTCAT
 TTCTGTCTTTGGGTGCTATTACAGCAATTAAGAAAATTGCTTTTACTAGACAAGTGCATGAGAAAACATC
 GCAACTCAGCTATTATTATATGGGTTTCTACATTCATTCTGTCCCAAGATGAGATACAAGGGTCAATAT
 AGACCTTCTGATTTGCTGTGCTGAGACGTATGTCTGGGTGCCATTGAGCAGTGCCTGCCTTCTCTGG
 ACAACTCCAAGTACTGCCGTTTCAACAGGACCCGAAGCAGAGGATGAAGGACGCGAGTAAGGAACCTTGA
 CCGACTAAGGGTGTTCACAGACGATCTGCCATGCCTTACGGTGTATAAAGAATCACCAGAAGACCCA
 AGTGAGGAGGCTGGTGTGCTGGAGTATGCAAACCTCGTAGGACAGAAGTCTCGGAGAGGATGCTGCTGT
 TCAGACAC

ACGCGTACGCGGCCGCTCGAG - GFP Tag - GTTTAA

Protein Sequence:

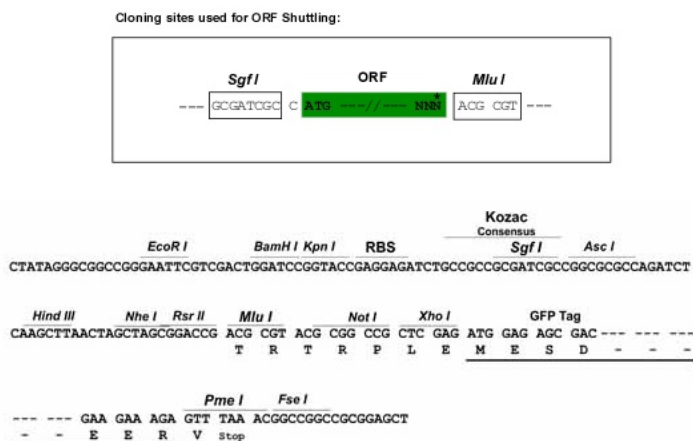
>MG222608 representing NM_001136054
 Red=Cloning site Green=Tags(s)

MASWSAPSPSLVEYFEGQTSFQCGYCKNKLGSRSYGMWAHSMTVQDYQDLIDRGWRRSGKYVYKPVMDQT
 CCPQYTI RCHPLQFQPSKSHKKVLKMLKFLAKGEISKGNCEDEPMDSTVEDAVDGFALINKLDIKCDL
 KTLSDLKGSIESEEKEKESIKKEGSKEFIHPQSIEEKLGSSEPSHPKVIKVIKPKPGKADLSKPPCRKA
 REMRKERQRLKRMQQAASAAASEAQGPVCLLPKAKSNQPKSLEDLIFQSLPENASHKLEVRLVPASFEDP
 EFNSSFNQSFSLYTKYQVAIHQEAPEICEKSEFTRFLCSSPLEAEHPADGPECGYGSFHQQYWLGDGKIIA
 VGVLDILPYCVSSVYLYDPDYSFLSLGVYSALREIAFTRQLHEKTSQLSYYMGMFYIHSCKPMRYKGQY
 RPSDLLCPETYVWVPIEQCLPSLDNSKYCRFNQDPEAEDEGRSKELDRLRVFHRRSAMPYGVYKNHQEDP
 SEEAGVLEYANLVGQKCSERMLLFRH

TRTRPLE - GFP Tag - V

Restriction Sites:

Sgfl-MluI

Cloning Scheme:


ACCN: NM_001136054

ORF Size: 1548 bp

OTI Disclaimer: The molecular sequence of this clone aligns with the gene accession number as a point of reference only. However, individual transcript sequences of the same gene can differ through naturally occurring variations (e.g. polymorphisms), each with its own valid existence. This clone is substantially in agreement with the reference, but a complete review of all prevailing variants is recommended prior to use. [More info](#)

OTI Annotation: This clone was engineered to express the complete ORF with an expression tag. Expression varies depending on the nature of the gene.

Components: The ORF clone is ion-exchange column purified and shipped in a 2D barcoded Matrix tube containing 10ug of transfection-ready, dried plasmid DNA (reconstitute with 100 ul of water).

Reconstitution Method:

1. Centrifuge at 5,000xg for 5min.
2. Carefully open the tube and add 100ul of sterile water to dissolve the DNA.
3. Close the tube and incubate for 10 minutes at room temperature.
4. Briefly vortex the tube and then do a quick spin (less than 5000xg) to concentrate the liquid at the bottom.
5. Store the suspended plasmid at -20°C. The DNA is stable for at least one year from date of shipping when stored at -20°C.

RefSeq: [NM_001136054.2](#), [NP_001129526.1](#)

RefSeq Size: 4752 bp

RefSeq ORF: 1551 bp

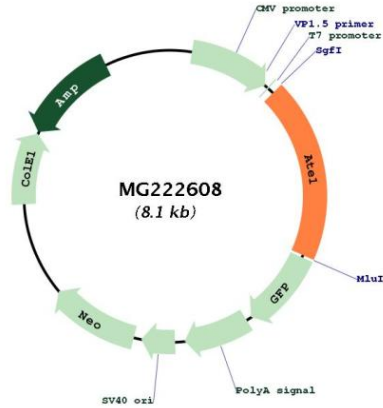
Locus ID: 11907

Cytogenetics: 7 F3

Gene Summary:

Involved in the post-translational conjugation of arginine to the N-terminal aspartate or glutamate of a protein. This arginylation is required for degradation of the protein via the ubiquitin pathway. Does not arginylate cysteine residues.[UniProtKB/Swiss-Prot Function]

Product images:



Circular map for MG222608