

Product datasheet for **MG222592**

Spag16 (NM_029160) Mouse Tagged ORF Clone

Product data:

Product Type:	Expression Plasmids
Product Name:	Spag16 (NM_029160) Mouse Tagged ORF Clone
Tag:	TurboGFP
Symbol:	Spag16
Synonyms:	4921511D23Rik; 4930524F24Rik; 4930585K05Rik; AV261009; Pf20; Wdr29
Mammalian Cell Selection:	Neomycin
Vector:	pCMV6-AC-GFP (PS100010)
E. coli Selection:	Ampicillin (100 ug/mL)



[View online »](#)

ORF Nucleotide Sequence:

>MG222592 representing NM_029160
 Red=Cloning site Blue=ORF Green=Tags(s)

TTTTGTAATACGACTCACTATAGGGCGGCCGGAATTCGTCGACTGGATCCGGTACCGAGGAGATCTGCC
 GCCGCGATCGCC

ATGGCTGCTCCGCTCGGGTCCCCTGCGGGTCTGGAGGAGCTGGGCATTGGCTTGTACCCACCG
 GCGAGGTGACAGAGGCGGTGACCTCCGAGGGCGCTACTACCTGGAGCAGGTACCATAACGGAAACATC
 GGAAGATGAATGCGAATATGAAGAGATACCAGATGACAATTTTCAGCATTCTGAAGGAGAAGAAGATCTG
 GAAAAAGCAATTCACATCATTGGAGAGCAAGCCAGAGACATCCATATTTTGAACAACAAACCATTCTTC
 CTGCAAGGAATGTAATGCAGGAAGCCATAGAAGATTTTCTGCAATTTCTGATCAAAAATGGGGATGAC
 CAGAACTCTGGACTGCTCCAGGCCGAGTGGTATGAGTTAATACAGAAGAAAGGAAGTACTTTAAAGGG
 CTCGGTAAATGTTCCCGATGTCTACAGCCAGGTGATGCTTTAGAGACTGAGAACAAAACTGAAGAAGG
 AATTGAAGCACTCAAACAGGCAGCTGAAAAGGCCAAAGAAGATCTACTGAGAACTCAGAAGGAACGGGA
 CTTCCATCGCATGCATCATAAGCGCATAGTGAAGAAAAGAACAAGCTCATTGCTGACCTCAAAGGGCTG
 AAATTGCATTATGCATCATAACGAACCAACTATAAGGGTGTACATGAGAAGCATCATGCTTTATTGAAGG
 AGAAAATGCTGACCTCTTTGAAAAGAGATCGAGCTGTTGGGAAGATTTCTGGGCTTCAAGCAACTGAA
 GAACATAGACATGGGACATATTCAGGTTCTGTAATTAAGGATCTTATGAGAGTCTTCTATCACAAAGA
 GAGTCAGGAGACAGAGCTGGTCACAGTTGTGAGAAAGAAAACAGTTTACAGAGGGCCCAACTCAGAAAAGTC
 TTCGTGAAGCCAGGGAAGAAGTTGGATATAAATCAAAGTTGAAGAATGAGAAAAGGATTCAGAATTTCC
 TGTAGATATGCAACCAGATCCAAACGTGACTTCATGTACAGAAAACGTTTCTGCAGCAAAATTTGACTAC
 AAGCTAAACAATATTTTCAGACTTCATGAACTCCAGTGAGCTGCATCGTCATGCATCCCTGCAGAGACT
 ATCTCATCTCCTGTAGTGAAGATCGTCTCTGGAAGATGGTGGCCCTCCACAGGGCAATGTACTTCTTAC
 AGGATCTGGCCACACTGATTGGTTGTCTGGCTGCTGCTTCCATCCGAGTGGCAGCAAGTTGGCTACCTCA
 AGTGGTGACAGCACAATCAAATATGGGACCTCAACAAAGGTGAATGCACCTTGACCCTGAAGGACACA
 ACCATGCCGATGGTCTGCACCTGGCACTCCTGTGGTACTTCGTGGCTTCTGCCTCACTGGATATGAC
 GAGTAAAATCTGGGATGTCAACAGTGAACGGTGCAGATACACTTTGTATGGACACACAGACTCTGTGAAC
 AGCATTGAGTTTTTCCCTTCTCCAACATTCTTCTCACCCTTCTGCAGACAAGACCTTGTCTGTGTGGG
 ATGCACGAACAGGTAATGTGAGCAGTCTGTATGGTACATGCATTCTGTCAATGATGCCACCTTAC
 GCCTAGGGGTACATAATAGCATCCTGTGATGCCCGTGGAGTTACAAAGCTGTGGGACTCCGGAAACTC
 ATTCAAATCGTGTCCATTGATGTGGTCCAAGTTCGGGAAATGAGGTGAACCTTTGACCAGTCAGGTCGAG
 TTTTAGCTCAGGCGAGTGCCAACGGGATTATCCATTTGCTGGATCTTAAATCGGGGCAAAATTCACAACT
 GGTGGGCCACGAGAGTGAAGTGCACAGTGTGGTGTTCACACCTGGGGGAAAATCTGTATTCTGGAGGC
 TCTGACGGCACCATTGCGTTGTGGATC

ACGCGTACGCGGCCGCTCGAG – GFP Tag – GTTTAA

Protein Sequence:

>MG222592 representing NM_029160
 Red=Cloning site Green=Tags(s)

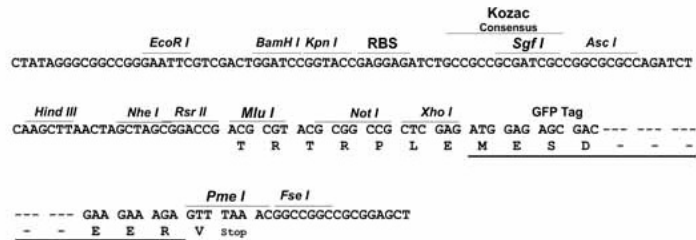
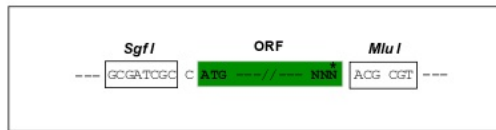
MAAPSGVPLRVLEELGIGLSPTGEVTEAVTSEGAYYLEQVTITETSEDECEYEEIPDDNFSIPEGEEDL
 EKAIHIIGEQARDIHILEQQTILPARNVMQEAIEDFLCNFLIKMGMRTRLDLDCFQAEWYELIQKKGSDFKG
 LGNVDPVYSQVMLLETENKLNKELKHFQAAEKAKEDLLRTQKERDFHRMHHKRIVQEKNKLIADLKGL
 KLHYASYEPTIRVLHEKHHALLKEKMLTSLERDRAVGKISGLQATLKNIDMGHIQVPVIKGSYESASITR
 ESGDRAGHSCEKENSSEGPTQKSLREAREEVGYKSKLKNEKKDSEFPVDMQPDPNVTSCITENVSAAKFDY
 KLNNIIFRLHELVPSCIVMHPCRDYLISSCEDRLWKMVGLPQGNVLLTGSHTDNLSGCCFHPSGSKLATS
 SGDSTIKLWDLNKGECTLLEGHNHAVWSCTWHSCGDFVASASLDMTSKIWDVNSERCRTLYGHTDSVN
 SIEFFPFSNILLTASADKTLVWDARTGKCEQSLYGHMHSVNDATFPRGHIIASCDARGVTKLWDFRKL
 IPIVSIIDVGPSSGNEVNFQSGRVLQAASANGIIHLDDLKSGQIHKLVGHESEVHSVVFVSHLGENLYSGG
 SDGTIRLWI

TRTRPLE – GFP Tag – V

Restriction Sites: SgfI-MluI

Cloning Scheme:

Cloning sites used for ORF Shutting:



ACCN: NM_029160

ORF Size: 1917 bp

OTI Disclaimer: The molecular sequence of this clone aligns with the gene accession number as a point of reference only. However, individual transcript sequences of the same gene can differ through naturally occurring variations (e.g. polymorphisms), each with its own valid existence. This clone is substantially in agreement with the reference, but a complete review of all prevailing variants is recommended prior to use. [More info](#)

OTI Annotation: This clone was engineered to express the complete ORF with an expression tag. Expression varies depending on the nature of the gene.

Components: The ORF clone is ion-exchange column purified and shipped in a 2D barcoded Matrix tube containing 10ug of transfection-ready, dried plasmid DNA (reconstitute with 100 ul of water).

- Reconstitution Method:**
1. Centrifuge at 5,000xg for 5min.
 2. Carefully open the tube and add 100ul of sterile water to dissolve the DNA.
 3. Close the tube and incubate for 10 minutes at room temperature.
 4. Briefly vortex the tube and then do a quick spin (less than 5000xg) to concentrate the liquid at the bottom.
 5. Store the suspended plasmid at -20°C. The DNA is stable for at least one year from date of shipping when stored at -20°C.

RefSeq: [NM_029160.3](#), [NP_083436.2](#)

RefSeq Size: 2145 bp

RefSeq ORF: 1920 bp

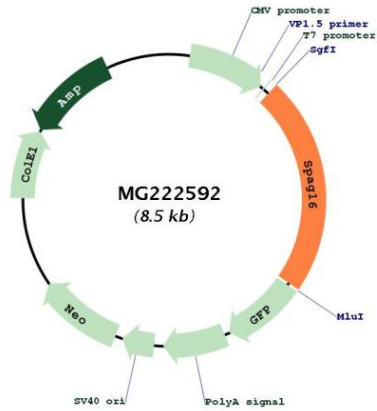
Locus ID: 66722

UniProt ID: [Q8K450](#)

Cytogenetics: 1 C3

Gene Summary: Necessary for sperm flagellar function. Plays a role in motile ciliogenesis. May help to recruit STK36 to the cilium or apical surface of the cell to initiate subsequent steps of construction of the central pair apparatus of motile cilia.[UniProtKB/Swiss-Prot Function]

Product images:



Circular map for MG222592