

Product datasheet for **MG222591**

Fbx15 (NM_001159963) Mouse Tagged ORF Clone

Product data:

Product Type:	Expression Plasmids
Product Name:	Fbx15 (NM_001159963) Mouse Tagged ORF Clone
Tag:	TurboGFP
Symbol:	Fbx15
Synonyms:	Fbl4; Fir4
Mammalian Cell Selection:	Neomycin
Vector:	pCMV6-AC-GFP (PS100010)
E. coli Selection:	Ampicillin (100 ug/mL)



[View online »](#)

ORF Nucleotide Sequence:

>MG222591 representing NM_001159963
 Red=Cloning site Blue=ORF Green=Tags(s)

TTTTGTAATACGACTCACTATAGGGCGGCCGGAATTCGTCGACTGGATCCGGTACCGAGGAGATCTGCC
 GCC**CGCATCGCC**

ATGGCGCCCTTCCCCGATGAAGTGGACGTCTTCACCGCCCCGACTGGCGGATGAAGCAGCTGGTGGGGC
 GCTACTGCGACAAGCTTTCTAAAACCAACTTTTCCAACAACAATGACTTCCGTGCTCTTCTCCAGCTTT
 ATATGCTACTTTCAAGGAGTTTAAAATGCATGAACAAATTGAAAATGAATACATTATCGGTTTACTTCAG
 CAGCGCAGTCAGACCATATATAATGTACACTCTGACAATAAGCTCTCCGAGATGCTGAGTCTCTTTGAAA
 AGGGGCTGAAGAATGTCAAGAATGAGTACGAACAGTTAAATTAAGCAAAACAGCTGAAAGAGAGATTGGA
 GGCTTTTACAAGAGATTTTCTTCTCACATGAAAGAGGAAGAAGAGGTTTTTTCAGCCCATGTTAATGGAA
 TATTTTACCTACGAGGAGCTTAAAGATATCAAAAAGAAAGTGATTGCACAGCACTGCTCACAGAAGGACA
 CGGCAGAGCTCCTCAGAGGGCTCAGTCTGTGGAACCAAGCTGAGGAGCGACAGAAAGTTCTCAAGTACTC
 TGTGGATGAGAAGGCAGATACAGAAGCGGAAGTGTGAGAACACTCCACAGGTATAACCCATCTTCTCCT
 GAGGTAATGCTGTCCATTTTCAGTTACCTTAATCCTCAAGAATTGTGTCGGTGTAGTCAAGTCAAGTACTA
 AGTGGTCTCAGCTGGCAAAAACAGGATCTTTGTGGAACATCTTTACCCTGTTTATTGGGCAAGAGGTGA
 CTGGTATAGTGGTCTGCCACTGAACTTGATACTGAGCCTGATGAGGAATGGGTGAGAAATAGGAAAGAT
 GAAAGTCGTGCTTTCCAGGAGTGGGATGAAGATGCCGATATAGATGAATCTGAAGAGTCTGCAGAGGAAT
 CGGTTGCTATCAGCATTGCACAAATGAAAAACGTGTACTCCATGGCTTAATTCATAATGTTCTGCCATA
 TGTTGGTACCTCTGTA AAAACTTTAGTGTAGCGTACAGCTCTGCAGTCTCCAGCAAAATGGTTAGGCAG
 ATTTTAGAGCTTTGTCTAACCTGGAACATCTGGATCTTACCCAGACCGACATTTCTGATTCTGCATTTG
 ACAGTTGGTCTTGGCTCGGTTGCTGCCAGAGTCTCGGCATCTTGATCTGTCTGGATGTGAAAAAATCAC
 AGACATGGCTCTAGAGAAGATTTCTAGAGCTCTTGGAGTTCTGACATCTCATCAGAGTGGCTTTCTGAAA
 AGTGCAGGCAAGGCTGCTTCAACTCCATGGACAAGTAAAGACATTACCATGCCATCCACCACGCAGTATG
 CCTGTTTGCACAATTTAACTGACAAAGGCATTGGTGAAGAAATAGACAACGAGCACTCTTGGACTGAACC
 TGTGTCTTCTGAAAGTTTGACTTCTCCTTATGTGTGGATGCTAGATGCTGAAGATTTGGCTGATATTGAA
 GATGCTGTAGAGTGGAGACACAGAAATGTTGAGAGTCTCTGTGTGATGGAACAGCCTCCAACCTTGGTT
 GTTCTCATCTGGTTGTTACAGTAAGGACATTGTGGGATTAAGGACTAGTGTCTGTTGGCAGCAGCATTG
 TGCTTCTCCAGCCTTTGCATATTGTGGTCACTTCTGTGTACAGGGACAGCTTAAAGAACTATGACT
 AACTCCAGCGACTTCTGCAATGTGTAGAAAAGCATTAAAGGACTACATTGCCAGGGGAAAGACTTAA
 TTTATTTGGGAGTGAAAAGTCTGACCAAGAGACTGGACGAGTACTTTTGTCTCCTCAGTCTGTCTGGATG
 TTACCAGATCACAGACCATGGTCTCAGGGCTCTGACTCTGGGAGGAGGGCTGCCTTACCTGGAGCACCTG
 AATCTCTCTGGCTGTCTGACTGTA ACTGGTGCAGGGCTGCAGGATTTGGTCTCAGCGTGTCTTCCCTAA
 ATGACGAATACTTTTACTACTGTGACAACATTAACGGTCTCATGCTGACACCGCAGTGGATGCCAGAA
 TTTGACAGTGTGGTTTTTCGAGCCTGCTGCCGCTCTGGCGAA

ACGCGTACGCGGCCGCTCGAG – GFP Tag – GTTTAA

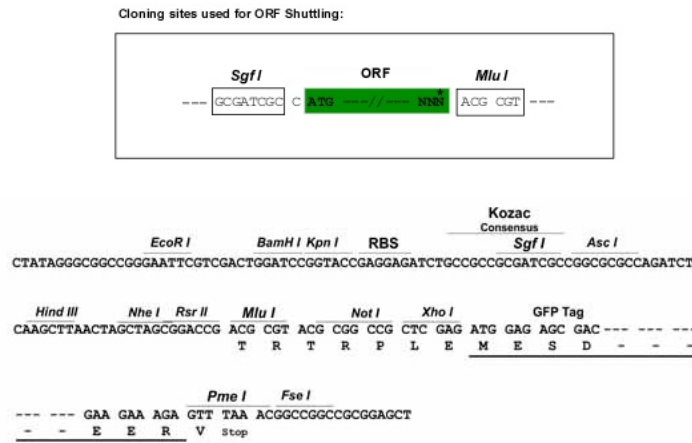
Protein Sequence: >MG222591 representing NM_001159963
 Red=Cloning site Green=Tags(s)

MAPFPDEVDVFTAPHWRMKQLVGRYCDKLSKTNFSNNDFRALLQSLYATFKEFKMHEQIENEYIIGLLQ
 QRSQTIYNVHSDNKLSEMLSLFEKGLKNVKNYEQLNYAKQLKERLEAFTRDFLPHMKEEEEVFQPLME
 YFTYEELKDIKKKVIAQHCSQKDTAELLRGLSLWNQAEERQKVLKYSVDEKADTEAEVSEHSTGITHLPP
 EVMLSIFSYLNPQELCRCSQVSTKWSQLAKTGSLWKHLYPVHWARGDWYSGPATELDTPEDEEWRNRKD
 ESRAFQEWDEDADIDEEESAEEESVAISIAQMEKRVLHGLIHNVLPPYVGTSVKTLVLAYSSAVSSKMVRQ
 ILELCPNLEHLDLTQTDISDSAFDSWSWLGCCQSLRHLDLSGCEKITDMALEKISRALGVLTSHQSGFLK
 SAGKAASPWTSKDITMPSTTQYACLHNLTDKIGIEEIDNEHSWTEPVSSSLTSPYVWMLDAEDLADIE
 DAVEWRHRNVELCVMETASNFGCSSSGCYSKDIVGLRTSVCWQQHCASPAFAYCGHSFCTGTALRTMT
 TLPATSAMCRKALRTTLPRGKDLIYFGSEKSDQETGRVLLFLSLSGCYQITDHLRALTLGGGLPYLEHL
 NLSGCLTVTGAQLQDLVSACPSLNDEYFYCDNINGPHADTASGCQNLQCGFRACCRSGE

TRTRPLE - GFP Tag - V

Restriction Sites: SgfI-MluI

Cloning Scheme:

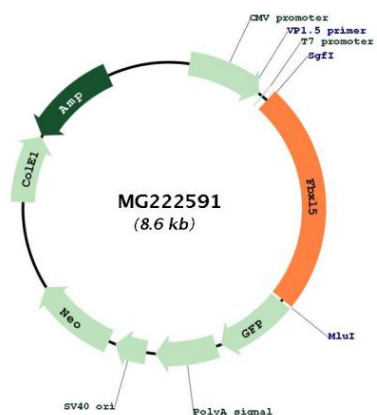


ACCN: NM_001159963

ORF Size: 2070 bp

OTI Disclaimer:	<p>Due to the inherent nature of this plasmid, standard methods to replicate additional amounts of DNA in E. coli are highly likely to result in mutations and/or rearrangements. Therefore, OriGene does not guarantee the capability to replicate this plasmid DNA. Additional amounts of DNA can be purchased from OriGene with batch-specific, full-sequence verification at a reduced cost. Please contact our customer care team at custsupport@origene.com or by calling 301.340.3188 option 3 for pricing and delivery.</p> <p>The molecular sequence of this clone aligns with the gene accession number as a point of reference only. However, individual transcript sequences of the same gene can differ through naturally occurring variations (e.g. polymorphisms), each with its own valid existence. This clone is substantially in agreement with the reference, but a complete review of all prevailing variants is recommended prior to use. More info</p>
OTI Annotation:	This clone was engineered to express the complete ORF with an expression tag. Expression varies depending on the nature of the gene.
Components:	The ORF clone is ion-exchange column purified and shipped in a 2D barcoded Matrix tube containing 10ug of transfection-ready, dried plasmid DNA (reconstitute with 100 ul of water).
Reconstitution Method:	<ol style="list-style-type: none"> 1. Centrifuge at 5,000xg for 5min. 2. Carefully open the tube and add 100ul of sterile water to dissolve the DNA. 3. Close the tube and incubate for 10 minutes at room temperature. 4. Briefly vortex the tube and then do a quick spin (less than 5000xg) to concentrate the liquid at the bottom. 5. Store the suspended plasmid at -20°C. The DNA is stable for at least one year from date of shipping when stored at -20°C.
RefSeq:	NM_001159963.1 , NP_001153435.1
RefSeq Size:	2855 bp
RefSeq ORF:	2073 bp
Locus ID:	242960
UniProt ID:	Q8C2S5
Cytogenetics:	5 B3
Gene Summary:	Component of some SCF (SKP1-cullin-F-box) protein ligase complex that plays a central role in iron homeostasis by promoting the ubiquitination and subsequent degradation of IREB2/IRP2. Upon high iron and oxygen level, it specifically recognizes and binds IREB2/IRP2, promoting its ubiquitination and degradation by the proteasome. Promotes ubiquitination and subsequent degradation of DCTN1/p150-glued (By similarity).[UniProtKB/Swiss-Prot Function]

Product images:



Circular map for MG222591