

Product datasheet for **MG222564**

Cckbr (NM_007627) Mouse Tagged ORF Clone

Product data:

Product Type:	Expression Plasmids
Product Name:	Cckbr (NM_007627) Mouse Tagged ORF Clone
Tag:	TurboGFP
Symbol:	Cckbr
Synonyms:	CCK-BR; CCK2; CCK2-R; CCK2R; CCKR-; CCKR-2
Mammalian Cell Selection:	Neomycin
Vector:	pCMV6-AC-GFP (PS100010)
E. coli Selection:	Ampicillin (100 ug/mL)



[View online »](#)

ORF Nucleotide Sequence:

>MG222564 representing NM_007627
 Red=Cloning site Blue=ORF Green=Tags(s)

TTTTGTAATACGACTCACTATAGGGCGGCCGGAATTCGTCGACTGGATCCGGTACCGAGGAGATCTGCC
 GCC**CGGATCGCC**

ATGGATCTGCTCAAGCTGAACCGCAGCTTGCAGGGACCAGGACCCGGGTCAGGGTCTTCTTTGTGCCGCC
 CGGGTGTCTCCCTCAACAGCAGTAGCGCCGGCAACCTCAGCTGCGAGACCCCTCGTATCCGCGGAAC
 CGGGACCAGAGAATTGGAGTTGACCATTGAATCACCCCTTATGCGGTGATCTTTCTGATGAGTGTGGC
 GGAAACGTGCTCATCATTGTGGTCTGGGACTGAGCCGACGCCTAAGAACGGTCACCAACGCCTTCTAC
 TCTCCCTGGCAGTCAGCGACCTCTGCTGGCTGTCGTTGCATGCCCTTCACTCTGCCAACCTCAT
 GGGCACATTCATCTCGGCACAGTCATCTGCAAGGCCGTTTCTACCTCATGGGGTATCAGTGAGTGTG
 TCCACTTAAATCTCGCGCCATCGCCCTGGAGCGATACAGCGCCATCTGCCGACACTGCAAGCAGAG
 TGTGGCAGACACGCTCCACGCAGCTCGGGTATCTTAGCCACGTGGCTGCTGTCTGGATTGCTTATGGT
 CCCCTACCTGTGTACACCGTGGTGCAGCCAGTGGGGCTCGAATACTGCAGTGCATGCATCTCTGCCC
 AGTGAACGTGTCCAACAATGTGGTCCGTGCTTCTGCTAATACTGCTGTTCTTATCCCGGGCGTGGTTA
 TGGCAGTGGCCTATGGACTCATCTCCCGCGAACTCTACCTAGGGCTCCGCTTTGATGGTGATAATGACAG
 CGAGACCCAAAGCCGGTCCGAAACCAAGGGGTCTGCCGGTGGGGCAGCACCAGGGCCTGTCCAACAG
 AACGGGGTGGCCGCATGTGACCAGCCTGACTGGGGAAGACAGTGTGGCTGCTACGTGCAACTCCAC
 GTTCCCGACTGGAGATGACAACGCTGACCACGCCCACTACTGGCCAGGCCCTGGCCCTCGGCCAACCA
 GGCAAGCTGCTGGCTAAGAAGCGGGTGGTGCGAATGCTGCTGGTATTGTTTTGCTTTTTTCTGTGTG
 TGGCTGCCAGTGTACAGCGCCAACAGTGGCGTGCCTTCGATGGCCAGGCGCGCCGAGCACTCGCAG
 GGGCCCTATCTTTTCATCCACTTGTGAGCTACACCTCTGCTTGTGCCAACCCCTGGTCTACTGTTT
 CATGCACCGCCGCTTCCGCCAGGCTGCCTGGACACATGTGCCCGCTGTTGCCACGCCCTCCACGAGCT
 CGCCACGGCCTCTCCGGATGAGGATCTCTACCCCTCCATCGCTTCTGTCCAGGCTAAGCTATA
 CCACCATCAGCACGCTGGGGCTGGC

ACGCGTACGCGGCCGCTCGAG - GFP Tag - GTTTAA

Protein Sequence:

>MG222564 representing NM_007627
 Red=Cloning site Green=Tags(s)

MDLLKLNRSLQGPVGSGLCRPGVSLNSSSAGNLS CETPRIRGTGTRELEL TIRITLYAVIFLMSVG
 GNVLIIVVLGLSRRLRTVTNAFLLSLAVSDLLAVACMPFTLLPNLMGTFIFGTVICKAVSYLMGVSVS
 STLNLAAIALERYSAICRPLQARVWQTRSHAARVILATWLLSGLLMVPYPVYTVVQPVGPRILQCMHLWP
 SERVQQMWSVLLLLILLFFIPGVVMAVAYGLISRELYLGLRFDGDNSETQSRVRNQGLPGGAAPGPVQQ
 NGGCRHVTSLTGEDSDGCVVQLPRSRLEMTLTPPTTGPVGPVPRPNQAKLLAKKRVVRLMLLVIVLLFFVC
 WLPVYSANTWRAFDGPGARRALAGAPISFIHLLSYTSACANPLVYCFMHRFRQACLDTCCARCCPRPPRA
 RPRPLPDEDPTPSIASLSRLSYTTISTLGGP

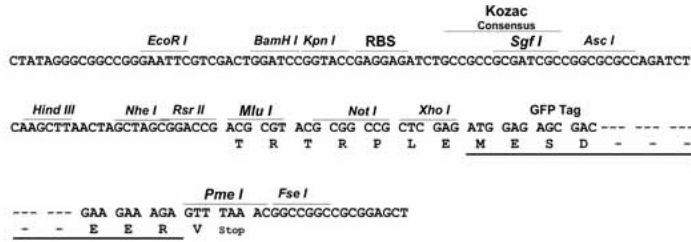
TRTRPLE - GFP Tag - V

Restriction Sites:

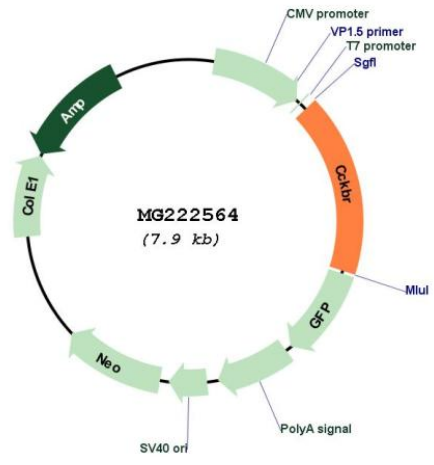
SgfI-MluI

Cloning Scheme:

Cloning sites used for ORF Shutting:



Plasmid Map:



ACCN: NM_007627

ORF Size: 1359 bp

OTI Disclaimer:	<p>Due to the inherent nature of this plasmid, standard methods to replicate additional amounts of DNA in E. coli are highly likely to result in mutations and/or rearrangements. Therefore, OriGene does not guarantee the capability to replicate this plasmid DNA. Additional amounts of DNA can be purchased from OriGene with batch-specific, full-sequence verification at a reduced cost. Please contact our customer care team at custsupport@origene.com or by calling 301.340.3188 option 3 for pricing and delivery.</p> <p>The molecular sequence of this clone aligns with the gene accession number as a point of reference only. However, individual transcript sequences of the same gene can differ through naturally occurring variations (e.g. polymorphisms), each with its own valid existence. This clone is substantially in agreement with the reference, but a complete review of all prevailing variants is recommended prior to use. More info</p>
OTI Annotation:	<p>This clone was engineered to express the complete ORF with an expression tag. Expression varies depending on the nature of the gene.</p>
Components:	<p>The ORF clone is ion-exchange column purified and shipped in a 2D barcoded Matrix tube containing 10ug of transfection-ready, dried plasmid DNA (reconstitute with 100 ul of water).</p>
Reconstitution Method:	<ol style="list-style-type: none">1. Centrifuge at 5,000xg for 5min.2. Carefully open the tube and add 100ul of sterile water to dissolve the DNA.3. Close the tube and incubate for 10 minutes at room temperature.4. Briefly vortex the tube and then do a quick spin (less than 5000xg) to concentrate the liquid at the bottom.5. Store the suspended plasmid at -20°C. The DNA is stable for at least one year from date of shipping when stored at -20°C.
RefSeq:	<p>NM_007627.4, NP_031653.1</p>
RefSeq Size:	<p>2483 bp</p>
RefSeq ORF:	<p>1362 bp</p>
Locus ID:	<p>12426</p>
UniProt ID:	<p>P56481</p>
Cytogenetics:	<p>7 55.86 cM</p>
Gene Summary:	<p>This gene encodes a multipass transmembrane receptor protein expressed in the central nervous system and gastrointestinal tract. Cholecystokinin and gastrin bind to the encoded protein to stimulate gastric acid secretion and mucosal growth in the gastrointestinal tract, and anxiety, pain sensation and memory in the brain. Mice lacking the encoded protein exhibit an increase in the basal gastric pH and gastrin levels in the bloodstream as well as mild hypocalcemia, secondary hyperparathyroidism and increased bone resorption. [provided by RefSeq, Apr 2015]</p>