

Product datasheet for **MG222556**

Axl (NM_001190974) Mouse Tagged ORF Clone

Product data:

Product Type:	Expression Plasmids
Product Name:	Axl (NM_001190974) Mouse Tagged ORF Clone
Tag:	TurboGFP
Symbol:	Axl
Synonyms:	AI323647; Ark; Tyro7; Ufo
Mammalian Cell Selection:	Neomycin
Vector:	pCMV6-AC-GFP (PS100010)
E. coli Selection:	Ampicillin (100 ug/mL)



[View online »](#)

ORF Nucleotide Sequence:

>MG222556 representing NM_001190974
 Red=Cloning site Blue=ORF Green=Tags(s)

TTTTGTAATACGACTCACTATAGGGCGGCCGGAATTCGTCGACTGGATCCGGTACCGAGGAGATCTGCC
 GCC**CGGATCGCC**

ATGGGCAGGGTCCCCTGGCTGGTGGTTGGCGTGTGCTGCTGGGGTGTGCAGCCATAGGACACAC
 AGACCGAGGCTGGCAGCCGTTTGTGGGAACCCAGGGAATATCACAGGTGCCAGAGGACTCACGGGGAC
 ACTTCGGTGTGAGCTCCAGGTTACAGGGGAACCCCTGAGGTGGTGTGGCTTCGAGATGGACAGATCCTA
 GAACTGGCTGATAACACCCAGACCCAGGTGCCTCTGGCGAAGACTGGCAAGATGAATGGAAAGTTGTCA
 GTCAGCTCAGAATCTCAGCCCTGCAACTTTCAGATGCAGGGGAGTACCAGTGTATGGTGCATCTAGAAGG
 ACGGACCTTTGTGTCTCAGCCGGGCTTTGTAGGGCTGGAAGGTCTCCCGTACTTCTGGAGGAGCCTGAG
 GACAAAGCTGTGCCTGCCAACCCCTTCAACCTAAGCTGCCAGGCCAGGGACCCCGGAACCCGTGA
 CCCTACTCTGGCTTCAAGATGCTGTCCCTGGCCCCAGTACAGGACACAGCTCCAGCACAGTCTGCA
 AACTCCAGGCCTGAACAAGACATCTTCTTCTCATGTGAAGCCACAATGCCAAGGGAGTACCACCTCC
 CGCACAGCCACCATCACAGTGTCCCCAGAGGCTCACCATCTCCACGTGGTTTCCAGACAACCTACGG
 AGCTAGAGGTAGCTTGGACCCCTGGCCTGAGTGGCATCTACCCGCTCACCACTGCAACCTGCAGGCCGT
 GCTGTGACAGCATGGGGTGGTATCTGGCTGGGAAAGTCAAGTCTCCTGAAGACCCCTCACCTTGCAA
 GTATCAGTGGCCCCCACCAGCTTCGGCTGGAAAAGTCTTCTCACACCCCGTATCACATCCGGATAT
 CCTGCAGCAGCAGCCAGGGCCCCCACCTTGGACCCACTGGCTTCTGTGGAGACCACAGAGGGAGTGCC
 CTTGGGTCCCCCTGAGAAGCTTAGCGCCATGCGGAATGGGAGCCAGGTCTCGTGCCTGGCAGGAGCCA
 AGGGTCCCCCTGCAAGGCACCTGTTAGGGTACCGCTGGCATAATCGAGGCCAGGACACCCCGAGGTAC
 TTATGGATATAGGGCTAACTCGAGAGGTGACCTTGGAACTGCGGGGGACAGGCCCTGTGGCTAACCTGAC
 TGTGTCTGTGACAGCCTATACCTCGGCTGGGGATGGGCCCTGGAGCCTTCTGTGCCCTAGAGCCCTGG
 CGCCAGTGAGTGAACCCACCTCGCGCCTTCTCGTGGCCTTGGTGGTATGACTGCTGGGAGCACTTG
 TGGCTGCCGCTGCGTCTCATCTTGGCCCTGTTCTTGTCCATCGGAGGAAGAAGGAGACTCGATATGG
 GGAGGTGTTTGGCCAAACCGTGGAAAGAGGTGAACTGGTAGTCAGGTACCGTGTCCGAAAGTCTACAGC
 CGGCGGACCCTGAAGCCACCTTGAACAGTCTGGGCATCAGTGAAGAGCTGAAGGAGAACTACGAGACG
 TCATGGTAGATCGGCATAAGGTGGCCTTGGGGAAGACCCTGGGAGAAGGAGAATTTGGCGCTGTGATGGA
 AGGTCAGCTCAATCAGGATGACTCCATCCTCAAGTTCGCTGTGAAGACCATGAAAATTGCCATCTGCACA
 AGATCAGAGCTGGAGATTTCTGAGTGAAGCTGTCTGCATGAAGGAATTTGACCACCCCAACGTCATGA
 GGCTCATTGGCGTCTGTTTTAGGGCTCTGACAGAGAGGGTTTCCAGAACCTGTGGTATCTTGCCTTT
 CATGAAACACGGAGACCTACACAGTTTCTCCTGTACTCCCGGCTCGGGGACCAGCCAGTGTTCCTGCC
 ACTCAGATGCTAGTGAAGTTCAATGGCCGACATTGCCAGTGGTATGGAGTACCTGAGTACCAAGAGATTCA
 TACATCGGGACCTGGCTGCCAGGAAGTGCATGCTGAATGAGAACATGTCCGTGTGTGGCAGACTTCGG
 GCTCTCCAAGAAGATCTACAACGGGGATTACTACCGCAAGGGCGCATTGCCAAGATGCCAGTCAAGTGG
 ATTGCTATTGAGAGTCTGGCAGATCGGGTCTACACCAGCAAGAGCGATGTGTGGTCTTCCGGTGTGACAA
 TGTGGGAGATCGCCACCCGAGGCCAACTCCCTATCCAGGGTGGAGAACAGTGAATTTACGACTACCT
 CGGTCAAGGAAATCGGCTGAAACAGCCTGTGGACTGTCTGGACGGCCTGTATGCCCTGATGTCTCGGTGC
 TGGGAACTGAACCCTCGAGACCGCCAAGTTTTGCGGAGCTCCGGGAAGACTTGGAGAACACACTGAAGG
 CTCTGCCCTGTCTCAGGAGCCAGATGAAATCCTCTATGTCAACATGGATGAGGGCGGAAGCCACCTTGA
 ACCCGTGGGGCTGCTGGAGGAGCTGACCCCCAACCAACCTGATCCTAAGGATTCCTGTAGTGTCTC
 ACTGCAGCTGACCTCCACTCAGCTGGACGCTATGTCTTTGCTCTTCTACAGCCCCAGGACCCACTGTG
 CTGCTGACAGAGGCTGCCAGCACCTCCAGGGCAGGAGGACGGAGCC

ACCGGTACGCGGCCGCTCGAG – GFP Tag – **GTTTAA**

Protein Sequence: >MG222556 representing NM_001190974
 Red=Cloning site Green=Tags(s)

MGRVPLAWWLALCCWGCAAHKDTQTEAGSPFVGNPGNITGARGLTGTLRCELQVQGEPEVVWLRDQIL
 ELADNTQTQVPLGEDWQDEWKVVSQRLRISALQLSDAGEYQCMVHLEGRTFVVSQPGFVGLLEGLPYFLEEPE
 DKAVPANTPFNLSCQAQGPPEPVTLWLQDAVPLAPVTGHSSQHSLSQTPGLNKTSSFCEAHNAKGVTTTS
 RTATITVLPQRPHHLHVSRQPTLEVAWTPGLSGIYPLTHCNLQAVLSDDGVIWLGKSDPPEDPLTLQ
 VSVPPHQLRLEKLLPHTPYHIRISCSSSQGPSWTHWLPVETTEGVPLGPPENVSAMRNGSQVLRVWQEP
 RVPLQGTLLGYRLAYRGQDTPEVLMDIGLTREVTLELRGDRPVANLTVSVTAYTSAGDGPWVSLPVPLEPW
 RPVSEPPPRAFSWPWVYVLLGALVAAACVLILALFLVHRRKKETRYGEVFEPTVERGELVVRVVRKSYS
 RRTTEATLNSLGISEELKEKLRDVMVDRHKVALGKTLGEGEFGAVMEGQLNQDSDILKVAVKTMKIAICT
 RSELEDFLSEAVCMKEFDHPNMRLIGVCFQGS DREGFPPEVVILPFMKHGDLHSFLLYSRLGDQPVFLP
 TQMLVKFMADIASGMEYLSTKRFIHRDLAARNMMLNENMSVCVADFGLSKKIYNGDYRQRIAKMPVKW
 IAIESLADRVYTSKSDVVSFGVTMWEIATRGTTPYGVENSEIYDYL RQGNRLKQPVDCLDGLYALMSRC
 WELNPRDRPSFAELREDLENTL KALPPAQEPDEILYVNMDEGGSHLEPRGAAGGADPPTQDPDKDSCSCL
 TAADVHSAGRYVLC PSTAPGP TLSADRGC PAPPQEDGA

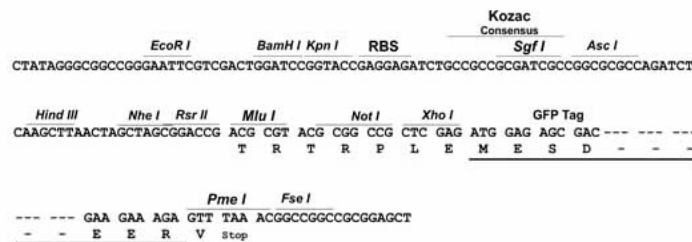
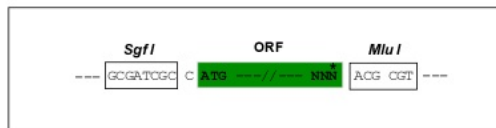
TRTRPLE - GFP Tag - V

Restriction Sites:

Sgfl-MluI

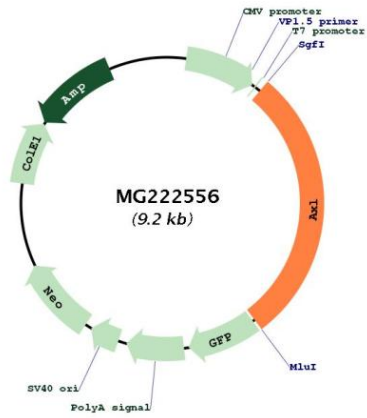
Cloning Scheme:

Cloning sites used for ORF Shuttling:



ACCN:	NM_001190974
ORF Size:	2637 bp
OTI Disclaimer:	The molecular sequence of this clone aligns with the gene accession number as a point of reference only. However, individual transcript sequences of the same gene can differ through naturally occurring variations (e.g. polymorphisms), each with its own valid existence. This clone is substantially in agreement with the reference, but a complete review of all prevailing variants is recommended prior to use. More info
OTI Annotation:	This clone was engineered to express the complete ORF with an expression tag. Expression varies depending on the nature of the gene.
Components:	The ORF clone is ion-exchange column purified and shipped in a 2D barcoded Matrix tube containing 10ug of transfection-ready, dried plasmid DNA (reconstitute with 100 ul of water).
Reconstitution Method:	<ol style="list-style-type: none">1. Centrifuge at 5,000xg for 5min.2. Carefully open the tube and add 100ul of sterile water to dissolve the DNA.3. Close the tube and incubate for 10 minutes at room temperature.4. Briefly vortex the tube and then do a quick spin (less than 5000xg) to concentrate the liquid at the bottom.5. Store the suspended plasmid at -20°C. The DNA is stable for at least one year from date of shipping when stored at -20°C.
RefSeq:	NM_001190974.1 , NP_001177903.1
RefSeq Size:	5057 bp
RefSeq ORF:	2640 bp
Locus ID:	26362
Cytogenetics:	7 14.02 cM
Gene Summary:	Receptor tyrosine kinase that transduces signals from the extracellular matrix into the cytoplasm by binding growth factor GAS6 and which is thus regulating many physiological processes including cell survival, cell proliferation, migration and differentiation. Ligand binding at the cell surface induces dimerization and autophosphorylation of AXL. Following activation by ligand, ALX binds and induces tyrosine phosphorylation of PI3-kinase subunits PIK3R1, PIK3R2 and PIK3R3; but also GRB2, PLCG1, LCK and PTPN11. Other downstream substrate candidates for AXL are CBL, NCK2, SOCS1 and TNS2. Recruitment of GRB2 and phosphatidylinositol 3 kinase regulatory subunits by AXL leads to the downstream activation of the AKT kinase. GAS6/AXL signaling plays a role in various processes such as endothelial cell survival during acidification by preventing apoptosis, optimal cytokine signaling during human natural killer cell development, hepatic regeneration, gonadotropin-releasing hormone neuron survival and migration, platelet activation, or regulation of thrombotic responses. Plays also an important role in inhibition of Toll-like receptors (TLRs)-mediated innate immune response.[UniProtKB/Swiss-Prot Function]

Product images:



Circular map for MG222556