

## Product datasheet for **MG222535**

### **Rpgr (NM\_011285) Mouse Tagged ORF Clone**

#### **Product data:**

Product Type:	Expression Plasmids
Product Name:	Rpgr (NM_011285) Mouse Tagged ORF Clone
Tag:	TurboGFP
Symbol:	Rpgr
Synonyms:	Rd9; Rp3h
Mammalian Cell Selection:	Neomycin
Vector:	pCMV6-AC-GFP (PS100010)
E. coli Selection:	Ampicillin (100 ug/mL)



[View online »](#)

ORF Nucleotide  
Sequence:

>MG222535 representing NM\_011285  
Red=Cloning site Blue=ORF Green=Tags(s)

TTTTGTAATACGACTCACTATAGGGCGGCCGGGAATTCGTCGACTGGATCCGGTACCGAGGAGATCTGCC  
GCC**CGGATCGCC**

ATGCCAAGAGGGTCGCGATGGGGTCCAGGGGTAGGGCAGCACCTTAGGCTCAATCGAGTCGCCCTG  
CTATCTTTCCGAAGCAGGCACAGATTCCGTTTCGCAGGCTTCGGCATGGCGGAATCTGAGTCACTGGTGCC  
CGATACAGGTGCTGTGTTTACGTTTGGAAAACTAAATTTGCCGAAAATATTCTAGCAAATCTGGTTT  
AAAAATGACATACCCATATGTCTTTCATGTGGAGATGAACATACTGCTATTGTTACAGGAAATAATAAAT  
TGTACATGTTTCGGCAGTAACAACGGGGTCAGTTAGGATTAGGATCAAAAGCTGCTATCATCAAGCCAAC  
ATGTATCAAAGCTCTTAAGCCTGAGAAGGTGAAACTTGTGCCTGTGGAAGGAACACACCTTAGTTTCA  
ACAGATACTGGTGGCGTATATGCAGCTGGTGGAAATAATGAAGGTCAACTGGGGCTTGGTGACACTGACG  
ATAGAGACACCTTTCATCAAATGTCTTTCACCTGCTGATACCATTAAACAGCTCTCTGCTGGCGC  
CAATACATCCGCTGCTCTTACTGAGGATGGAAAACCTTTTATGTGGGGTGACAATTCTGAAGGGCAGATT  
GGTCTAGAAGATAAAAAGTAATGTATGTATCCCTCATGAAGTGACTGTTGGAAAGCCAATTTCTGGATCT  
CTTGTTGGATATTACCATTGAGCTTTTGTAAACAATGGATGGGGAGCTCTACACATTTGGAGAACCAGGAA  
TGGGAAGTTGGGCCTTCCAATGAGCTGCTGATGAATCACAGATCACCCAGCGTGTGCTGGGCATTCTT  
GAGAGGGTCATTCAAGTGGCCTGTGGTGGAGGGCACACTGTGGTTCTCACAGAGAAAAGTTGTGTATGCC  
TTGGGCTGGGGCAGTTTGGACAACCTGGGCCTTGGCACTTTTCTTTTGAACATCAGAACCACAAAATTA  
TGAGCGTATTAAGGATCAGAAAAATGTCATATTTCTGTGGAGAAAACCATACAGCTTTGATGACAGAA  
CTAGGCCTCCTGTATACTTTTGGAGACGGCCGACATGAAAAGTTAGGACTTGGGATGGAGAATTTACCA  
TCAGTTCTTTCTTACCTTGTGCTCTAACTTTTGGAGATTTGCAGTTCAATTGATTGCTGTGGTGGAT  
TCATATGCTAGTTTTTGGCACTCCAGACTTGGTACAATAGATGAACCTAAATTTGAAGACGTATATGAG  
CCTTATATAAGTACAGGTTCTTTTTCCATCAATGACCTCTCCCAAGAAGTTCACTGAATAGATCTTTAT  
CAGCACGTCTGCGGCGAAGAGAGCGGGAGACCCCATGCTCAGCTTCAATGGTGGGAACACTGCCTCC  
ATTAGAGGGGACTTCTGCCTCCACTTCAGCTTATTTTTACCCAGTTCACCCCTTCCATTTGTCTGTG  
AATAACTACCCAGAGAAAAGCCCTCTGAATCAATGGAGCCACTGGACTCAGATTATTTGAAGATAAAA  
TGAACAAAGACACAGAGACAGAAAATTTCTCAGCAGTGGATTGAGAAAACCTTGGTGAACCTAATGAT  
CTTAAATATGACACATATGATGACTACGAGTTCCAATGAGAAGTTATTAGATTTTTACCAATTCAAAA  
CAACAGGCTCCTCAACTTTCAGAACTGTGAAACCAGAAGAAGGGGAAATGGATGAGGAAATTAGTATCC  
TGAATGTAGAAGACACTGTAGAAGAAGAAAGGAAGGAAGGAGAGAAGGAGATTGTAGAAGAAGGAAGT  
ACCTGAAACAGAAGGCTCAGAACTATTGATTAATGATGAGAAAGCTAGATGAAGTCTTAAAGAGGAA  
GACAGTGCCAGCCTTCTGCAACGGGCCCTTCGTGAGTACAATGAAAATCCAAAAGGACACATGTATGATC  
GTGTAAGAGCAGCTCTTCAGAAATTCGGGAGGTAATGATCCAACAAGTAAAGACATAAAAAAGCTAA  
AAAAATTTCTTCTTTAATCGGATGTCATTGACAGGTCAGAACTGATGCAGAATACTAATGATCCACTC  
CCAGAGATAAAGCCAATAGGAGATCAGATAGCCTTACAAAAGTATAAGAAAGATGCCAACCAAGACACA  
TGGGTCAAATCTTCAGGATTCGACAACACCAAATATGGAGGGAAAGTCCAAATCCTGTACAATTCTA

ACGCGTACGCGGCCGCTCGAG - GFP Tag - GTTTAA

**Protein Sequence:** >MG222535 representing NM\_011285  
Red=Cloning site Green=Tags(s)

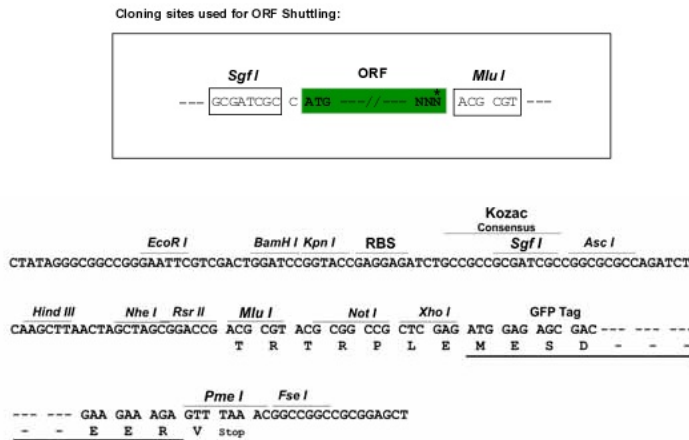
```

MPRGRWGSQGVGQHLRLNRVAPAIFFPKQAQIPFAGFGMAESES LVPDTGAVFTFGKTKFAENIPSKFWF
KNDIPICLSCGDEHTAIVTGNKLYMFGSNWQQLGLGSKAAIIKPTCIKALKPEKVKLAACGRNHTLVS
TDTGGVYAAGGNNEGQLGLGDTDDRDTFHQIVFFTPADTIKQLSAGANTSAALETEDGKLFMWGDNSEGQI
GLEDKSNVCIPHEVTVGKPISWISCGYHSAFVMDGELYTFGEPENGLGLPNELLMNHRSPQVRLGIP
ERVIQVACGGGHTVVLTEKVYAFGLGQFGQLGLGTFLFETSEPKIIERIKDQKICHISCGENHTALMTE
LGLLYTFGDGRHGKLG LGMENFTNQFFPTLCSNFLRFVAVQLIACGGCHMLVFATPRLGTIDEPKFEDVYE
PYISTGSFSINDLSPRSSLNRSL SARLRRRERPPCSASMVGTLPPLEGTSASTSAYFYSPSPFHL SV
NNYPEKSPSEMEPLDSDYFEDKMNKDTE TENSSAVDSENFGETNDILNMTHMMTTSSNEKLLDFSPIQK
QQAPQLSETVKPEEGEMDEEISILNVEDTVEEERKEGEKEIVEEGSIPETEGSETIDITDEKLEVLKEE
DSALLQRALREYNENPKGHMYDRVKSSSSEILGGNDPTSKDIKKAKKISFFNRMSLTGQKLMQNTNDPL
PEIKPIGDQIALQSDKKDANQNHMGQNLQDSTTPNMEGKSKSCTIL
    
```

TRTRPLE - GFP Tag - V

**Restriction Sites:** SgfI-MluI

**Cloning Scheme:**



**ACCN:** NM\_011285

**ORF Size:** 2238 bp

**OTI Disclaimer:** The molecular sequence of this clone aligns with the gene accession number as a point of reference only. However, individual transcript sequences of the same gene can differ through naturally occurring variations (e.g. polymorphisms), each with its own valid existence. This clone is substantially in agreement with the reference, but a complete review of all prevailing variants is recommended prior to use. [More info](#)

**OTI Annotation:** This clone was engineered to express the complete ORF with an expression tag. Expression varies depending on the nature of the gene.

**Components:** The ORF clone is ion-exchange column purified and shipped in a 2D barcoded Matrix tube containing 10ug of transfection-ready, dried plasmid DNA (reconstitute with 100 ul of water).

**Reconstitution Method:**

1. Centrifuge at 5,000xg for 5min.
2. Carefully open the tube and add 100ul of sterile water to dissolve the DNA.
3. Close the tube and incubate for 10 minutes at room temperature.
4. Briefly vortex the tube and then do a quick spin (less than 5000xg) to concentrate the liquid at the bottom.
5. Store the suspended plasmid at -20°C. The DNA is stable for at least one year from date of shipping when stored at -20°C.

**RefSeq:** [NM\\_011285.2](#), [NP\\_035415.1](#)

**RefSeq Size:** 2801 bp

**RefSeq ORF:** 2241 bp

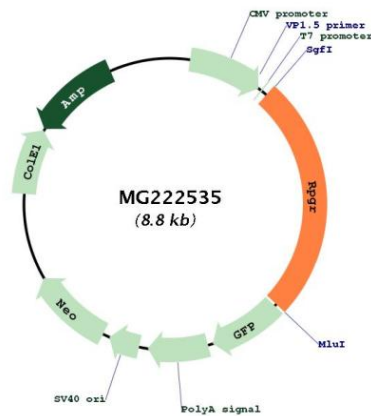
**Locus ID:** 19893

**UniProt ID:** [Q9R0X5](#)

**Cytogenetics:** X A1.1

**Gene Summary:** Could be a guanine-nucleotide releasing factor (By similarity). Plays a role in ciliogenesis (By similarity). Probably regulates cilia formation by regulating actin stress filaments and cell contractility (By similarity). May be involved in microtubule organization and regulation of transport in primary cilia (By similarity). Plays an important role in photoreceptor integrity. Isoform 5 may play a critical role in spermatogenesis and in intraflagellar transport processes. [UniProtKB/Swiss-Prot Function]

### Product images:



Circular map for MG222535