

## Product datasheet for **MG222518**

### **Ablim1 (NM\_001103178) Mouse Tagged ORF Clone**

#### **Product data:**

Product Type:	Expression Plasmids
Product Name:	Ablim1 (NM_001103178) Mouse Tagged ORF Clone
Tag:	TurboGFP
Symbol:	Ablim1
Synonyms:	2210411C18Rik; 2610209L21Rik; 4833406P10Rik; 9330196J19Rik; AV079770; AW060987
Mammalian Cell Selection:	Neomycin
Vector:	pCMV6-AC-GFP (PS100010)
E. coli Selection:	Ampicillin (100 ug/mL)



[View online »](#)

ORF Nucleotide Sequence:

```
>MG222518 representing NM_001103178
Red=Cloning site Blue=ORF Green=Tags(s)
```

TTTTGTAATACGACTCACTATAGGGCGGCCGGAATTCTGTCGACTGGATCCGGTACCGAGGAGATCTGCC  
GCC**GCGATCGC**

ATGTTTCACACAGAAGGGAAGAAATGTATCTGCAAGGTTCTACCGTGTGGCATCCCAGCTGTAAGCAGTCCA  
CTAAGACAGAGGAGAAGCTGCGGCCACCAACATCCCGCGCTCTTCATCCGATTTCTTTTACCCAAAAG  
TCTGATTCGTCGCACAGGACGGTCCCCAGCTCTGCAGCTTCTGTCGCCACCCTGTCTGATGAACCTCAAC  
AAAAACCCAGGCAGCCACCAGGACCTCCTCTGAAAGTATCTATTCTAGACCAGGCTCCAGCATCCCTG  
GTTACCAGGCCATACTATCTATGCAAAAGTAGACAATGAAATCCTGGATTACAAGGATTTAGCAGCCA  
CCCCAAGGTCAAGGCGATCTATGACATCGAGCGTCCAGATCTCATTACCTATGAGCCTTTCTACACATCA  
GGCTATGAGGACAAGCAGGAGAGACAGAGCCTTGAGAGAGTCTCCAAGGACTTTGTCTCCAACCTCCATCTG  
CAGAAGGTTATCAAGATGTCCGGGATCGGATGATCCACAGGTCCACCAGCCAGGGCTCCATCAACTCCCC  
TGTGTATAGCCGGCACAGTTAACTCCAACACGTCTCGCTCGCCCCAGCACTTCCACCGACCTGAGCTC  
TTGTCTCCTGGTGTGCACAGGTGGTCTCCCTGCGCACCAGCAGCTTCAGCTCCACCCACAGCGACTCCC  
GTCCCAACCCCCCTTCCGACACCACTTCTCCCCCATGTCAAAGGCAATGAGCCGTCCAGCGGCCGGA  
CTCCCTCTCCCTACCGGCCCGACAGCCGCCCTCTAACTCCAACCTACGCTCAGGCCCTAAACATTTT  
CATGTTCCAGATCAAGGGATCAACATTTACCGAAAACACCCATCTACAAAACAGCATGCTGCCTTGGCAG  
CCCAGAGCAAGGCTTCAGAAGATATCATCAAGTTTTCCAAGTTCACAGCAGCCAGGCGCCAGATCCCAA  
CGAGATACCAAAGATTGAGACGGACCACTGGCCGGGTCCCCCTCACTTGCCGCGTAGGAACGACCCG  
AGGCGCAGATCAAGTGGCAGAGAGGAAGATGAAGAGGAGCTTTTGAGACGCCGGCAGCTTCAAGAAGAAC  
AGTTGATGAAGCTCAACTCAGGCCTGGGCAGCTGATCTCTCCCTCCACTCAGCTTCCATGCTCCATCATCTAAAT  
TCACTCTCCCTGGTTATGAAAGAAATGGCCTTACCCGCCAGCTTTCCACAGACTTGCCTCAGTACAACA  
GCTACGGAGACATCAGTGGCGGAGTTCGAGACTACAGACCTTCCAGATGGCCACATGCCTGCAGTGTAG  
AATGGACAGAGGAGTATCCATGCCCAACATGTTGGAACCAAAGATATTTCCATATGAGATGCTCATGGTG  
ACCAACAGAGGGCGCAACAAAATCCTGAGAGATGTGGATAGAACCCGGCTAGAGCGCCACTTAGCCCCA  
AAGTATTTTGGGAGATCTTTGGGATGTCCATACAGGAATTTGACAAGTTACCTCTTTGGAGACGCAACGA  
CATGAAGAAAAAAGCTAAACTCTTC

ACGCGTACGCGGCCGCTCGAG - GFP Tag - GTTTAA

**Protein Sequence:**

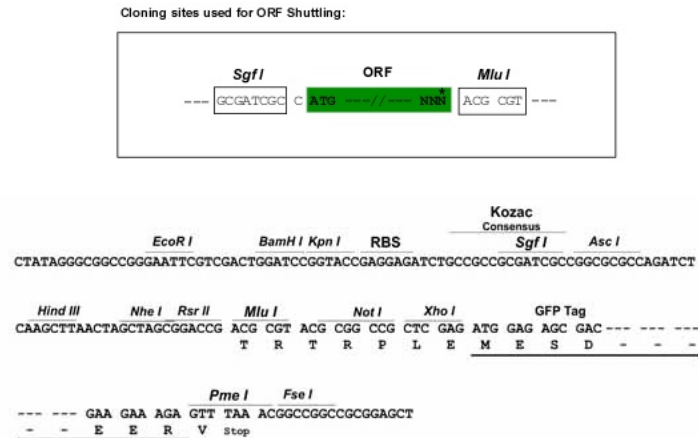
>MG222518 representing NM\_001103178  
Red=Cloning site Green=Tags(s)

MFTEGEEMYLQGSTVWHPDCKQSTKTEELRPPNIPRSSDDFFYPKSLIRRTGRSPALQLLSPPCLMNSN  
KNPRQPTRTSSESIYSRPGSSIPGSPGHTIYAKVDNEILDYKDLAAIPKVKAIYDIERPDLITYEPFYTS  
GYEDKQERQSLGESPRTLSPTPSAEGYQVDRDMIHRSTSQGSINSPVYSRHSYPTTTSRSPQHFRPEL  
LSPGVHRWSPLRTSSFSSTHSDSRNPFFRHHFLPHVKGNPESSGRNSPLPYRPSDRPLTPTYAQAPKHF  
HVPDQGINIYRKPIYKQHAALAAQSKASEDIKFSKFPAAQADPNEIPKIE TDHWP GPPSLAAVGTD  
RRSSSGREEDDEEELLRRQLQEEQLMKLNSDGLQDLILKEEMEKESRERASLASRYDSPLSHASHAPSSK  
TSLPGYKGNLHRVSTDFAQYNYSKDISGGVRIQTLPDGHMPAVRMDRGVSMNPMLLEPKIFPYEMLMV  
TNRGRNKLRLDVRTRLERHLAPEVFWEIFGMSIQEFDKLPLWRNDMKKKAKLF

TRTRPLE - GFP Tag - V

### Restriction Sites:

Sgfl-MluI

**Cloning Scheme:**


**ACCN:** NM\_001103178

**ORF Size:** 1635 bp

**OTI Disclaimer:** The molecular sequence of this clone aligns with the gene accession number as a point of reference only. However, individual transcript sequences of the same gene can differ through naturally occurring variations (e.g. polymorphisms), each with its own valid existence. This clone is substantially in agreement with the reference, but a complete review of all prevailing variants is recommended prior to use. [More info](#)

**OTI Annotation:** This clone was engineered to express the complete ORF with an expression tag. Expression varies depending on the nature of the gene.

**Components:** The ORF clone is ion-exchange column purified and shipped in a 2D barcoded Matrix tube containing 10ug of transfection-ready, dried plasmid DNA (reconstitute with 100 ul of water).

**Reconstitution Method:**

1. Centrifuge at 5,000xg for 5min.
2. Carefully open the tube and add 100ul of sterile water to dissolve the DNA.
3. Close the tube and incubate for 10 minutes at room temperature.
4. Briefly vortex the tube and then do a quick spin (less than 5000xg) to concentrate the liquid at the bottom.
5. Store the suspended plasmid at -20°C. The DNA is stable for at least one year from date of shipping when stored at -20°C.

**RefSeq:** [NM\\_001103178.3](#)

**RefSeq Size:** 5927 bp

**RefSeq ORF:** 1638 bp

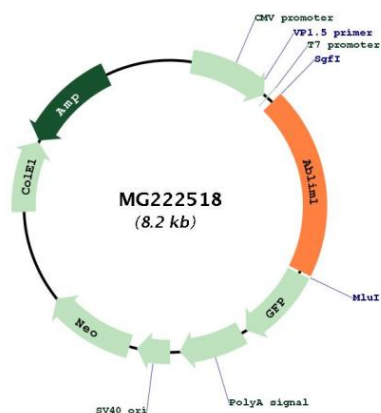
**Locus ID:** 226251

**UniProt ID:** [Q8K4G5](#)

**Cytogenetics:** 19 52.09 cM

**Gene Summary:** May act as scaffold protein (By similarity). May play a role in the development of the retina. Has been suggested to play a role in axon guidance.[UniProtKB/Swiss-Prot Function]

## Product images:



Circular map for MG222518