

## Product datasheet for **MG222515**

### **Ablim1 (NM\_178688) Mouse Tagged ORF Clone**

#### **Product data:**

Product Type:	Expression Plasmids
Product Name:	Ablim1 (NM_178688) Mouse Tagged ORF Clone
Tag:	TurboGFP
Symbol:	Ablim1
Synonyms:	2210411C18Rik; 2610209L21Rik; 4833406P10Rik; 9330196J19Rik; AV079770; AW060987
Mammalian Cell Selection:	Neomycin
Vector:	pCMV6-AC-GFP (PS100010)
E. coli Selection:	Ampicillin (100 ug/mL)



[View online »](#)

**ORF Nucleotide Sequence:**

>MG222515 representing NM\_178688  
 Red=Cloning site Blue=ORF Green=Tags(s)

TTTTGTAATACGACTCACTATAGGGCGGCCGGAATTCGTCGACTGGATCCGGTACCGAGGAGATCTGCC  
 GCC**CGGATCGCC**

ATGCCATCCTTGCTTGGGTTAAAGTGTCTGGGAAATTGTGCAGCTCTGAGATAGCAAAGTTCCCTCAC  
 CAGAGAGAGCCAGCCTCAGGAACCTCCACAGGAGACTGCTTATTGAGACTGAGTGTCCCCGAGACTCC  
 TGACCCTGCTCATCGCAGGCGTGGCACAGTCATACATCTGGTCTATCTGTATTCTGCTGGCTGTGGTCCA  
 CCAGAGCTCAGGTTTAGCAGCTATGATCCATCCGTGGCCATCCTCAGGACCCTCACCCTCGTCGGAGA  
 AACCTGTCATTACTGCCATAAATGCGGGGAGCCATGCAAGGGCGAAGTGTACGGGTGCAGACCAAGCA  
 TTTCCACATCAAATGCTTCACTGCAAAGTGTGCGGCTGCGACCTGGCCAGGGGGGCTTCTTCATAAAG  
 AACGGGGACTATCTGTGTACCCTGGACTACCAGAGGATGTATGGGACACGGTGCCACGGCTGTGGGGAGT  
 TCGTGGAGGGCGAGGTGGTAACCTGGGCAAGACCTACCACCCCAACTGCTTCGCTGTACAATCTG  
 CAAGCGCCATTTCCACCCGAGACCGAGTCACATTCAACGGGAGAGACTGTCTTTGTGACGCTCTGTGCA  
 CAGCCGATGTCTCCAGCCCTAAAGAAGCTCCTGCTCCAGCAACTGCGCCGGCTGTGGAAGGGACATTA  
 AGAACGGACAGGCGCTGCTAGCTCTGGACAAGCAGTGGCATTGGGCTGCTTCAAGTGAAGTCCCTGTGG  
 GAAGTCTCACCGGCGAGTACATCAGCAAGGATGGCTCCCCATACTGTGAGAAAGACTACCAGGGGCTC  
 TTTGGGGTGAAGTGTGAAGCCTGTACCCAGTTTATCACAGGAAAAGTCTGGAGGCGAGGCGACAAGCATT  
 ATCATCCAGCTGCGCACGATGCAGCAGATGCAATCAGATGTTCCAGAAAGGGGAAGAAATGTATCTGCA  
 AGGTTCTACCGTGTGGCATCCCGACTGTAAAGCAGTCCACTAAGACAGAGGAGAAGCTGCGGCCACCAAC  
 ATCCCGCGCTCTTCATCCGATTTCTTTACCCAAAAGTCTGATTGTCGCACAGGACGGTCCCCAGCTC  
 TGCAGCTTCTGTGCGCACCCCTGTCTGATGAACCTCAACAAAAACCCAGGCAGCCACCAGGACCTCCTC  
 TGAAAGTATCTATTCTAGACCAGGCTCCAGCATCCCTGGTTACCAGGCCATACTATCTATGCAAAAAGTA  
 GACAATGAAATCCTGGATTACAAGGATTTAGCAGCCATCCCAAGGTCAAGGCGATCTATGACATCGAGC  
 GTCCAGATCTCATTACCTATGAGCCTTTTACACATCAGGCTATGAGGACAAGCAGGAGAGACAGAGCCT  
 TGGAGAGTCTCCAAGGACTTTGTCTCCAACCTCCATCTGCAGAAGGTTATCAAGATGTCCGGGATCGGATG  
 ATCCACAGGTCCACCAGCCAGGGCTCCATCAACTCCCCTGTGTATAGCCGGCACAGTTACTCTCAACTA  
 CGTCTCGCTCGCCCCAGCACTTCCACCGACCTGAGCTCTGTCTCCTGGTGTGCACAGGTGGTCTCCCTC  
 GCGCACAGCAGCTTCACTCCACCCACAGCGACTCCCGTCCCAACCCCCCTTCCGACACCACTTCCTC  
 CCCATGTCAAAGGCAATGAGCCGTCCAGCGGCCGGAACCTCCCCTCTCCCCTACCGGCCGACAGCCGCC  
 CTCTAACTCCAACCTACGCTCAGGCCCTAAACATTTCCATGTTCCAGATCAAGGGATCAACATTTACCG  
 AAAACCACCCATCTACAACAGCATGCTGCCTTGGCAGCCAGAGCAAGGCTTCAGAAGATATCATCAAG  
 TTTTCAAAGTTCACAGCAGCCAGGCGCCAGATCCCAACGAGATACCAAAGATTGAGACGGACCACTGGC  
 CGGGTCCCCCTCACTTGCCGCGTAGGAACTGACCCGAGGCGCAGATCAAGTGGCAGAGAGGAAGATGA  
 AGAGGAGCTTTTGGAGACCGGCGAGCTTCAAGAAGAACAGTTGATGAAGTCAACTCAGGCTGGGGCAG  
 CTGATCCTGAAGGAAGAGATGGAGAAGGAGAGCAGAGAAAAGAGCATCGCTGGCCAGTTCGCTATGACTCTC  
 CCCTCCACTCAGTTCCCATGCTCCATCATCTAAAACCTCATCTCCTGGTTATGAAAGAATGGCCT  
 TCACCGGCCAGTTCCACAGACTTCGCTCAGTACAACAGCTACGGAGACATCAGTGGCGGAGTTCGAGAC  
 TACCAGACCTCCAGATGGCCACATGCCTGCAGTGAGAATGGACAGAGGAGATCCATGCCCAACATGT  
 TGGAAACAAAGATATTTCCATATGAGATGCTCATGGTGACCAACAGAGGGCGCAACAAAATCCTGAGAGA  
 TGTGGATAGAACCCGGCTAGAGCGCCACTTAGCCCCAGAAGTATTTGGGAGATCTTTGGGATGTCCATA  
 CAGGAATTTGACAAGTTACCTCTTTGGAGACGCAACGACATGAAGAAAAAGCTAAACTCTTC

**ACGGTACGCGGCCGCTCGAG** - GFP Tag - GTTTAA

**Protein Sequence:** >MG222515 representing NM\_178688  
Red=Cloning site Green=Tags(s)

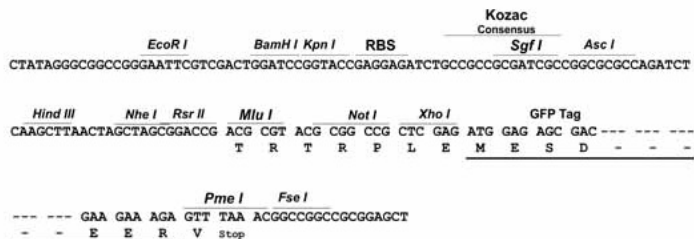
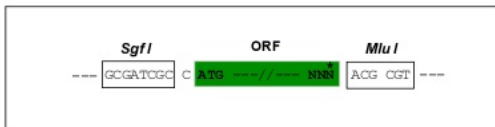
MPSLLGLKCLGKLCSSSEIGKVSPERASLRNSHRRLIEDLSVPETPDPAHRRRGTVIHLVYLYSAGCGP  
PELRFSSYDPSVAHPQDPHHSSEKPVIIHCHKCGEPCCKGEVLRVQTKHFHIKCFCTCKVCGCDLAQGGFFIK  
NGDYLCCTLDYQRMYGTRCHGCGEFVEGEVVTALGKTYHPNCFACITCKRPFPPGDRVTFNGRDCLCQLCA  
QPMSSSPKEASCSNACGCGRDIKNGQALLALDKQWHLGCFKCKSCGKVL TGEYISKDGSPIYCEKDYQGL  
FGVKCEACHQFITGKVL EAGDKHYHPSCARCSRCNQMFTEGEEMYLQGSTVWHPDCKQSTKTEEKL RPPN  
IPRSSDFFYPKSLIRRTGRSPALQLLSPCLMNSNKNRQPTRTSSSEIYSRPGSSIPGSPGHTIYAKV  
DNEILDYDLAAIPKVKAIDIERPDLITYEPFYTSGYEDKQERQSLGESPRTLSPTPSAEGYQDVRDRM  
IHRSTSQGSINSPVYSRHSYTP TTSRSPQHFHRPELLSPGVHRWSPLRTSSF SSTHSDSRNPPFRHHFL  
PHVKGNEPSSGRNSPLPYRPSRPLTPTYAQAPKHFHVPDQGINIYRKPP IYKQHAALAAQSKASEDIK  
FSKFPAQAQADPNEIPKIETHWPGPPSLAAVGTDP RRRSSGREDEEELLRRRQLQEEQLMKLNSGLGQ  
LILKEEMEKE SRERASLASRYDSPLHSASHAPSSKTSSLPGYGKNGLHRPVSTDF AQYNSYGDISGGVRD  
YQTLPDGHMPAVRMDRGVSMNMLEPKIFPYEMLMVTNRGRNKILRDVDRTRLERHLAPEVFWEIFGMSI  
QEFDKLPLWRRNDM KKKAKLF

TRTRPLE - GFP Tag - V

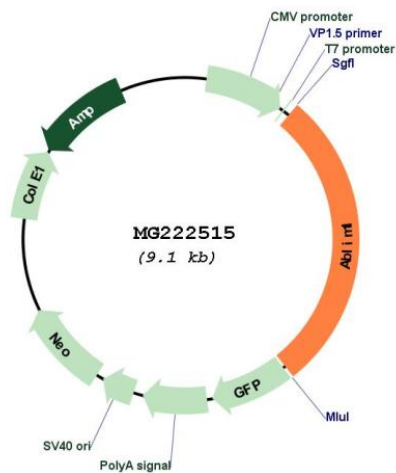
**Restriction Sites:** Sgfl-MluI

Cloning Scheme:

Cloning sites used for ORF Shutting:



Plasmid Map:



<b>ACCN:</b>	NM_178688
<b>ORF Size:</b>	2583 bp
<b>OTI Disclaimer:</b>	The molecular sequence of this clone aligns with the gene accession number as a point of reference only. However, individual transcript sequences of the same gene can differ through naturally occurring variations (e.g. polymorphisms), each with its own valid existence. This clone is substantially in agreement with the reference, but a complete review of all prevailing variants is recommended prior to use. <a href="#">More info</a>
<b>OTI Annotation:</b>	This clone was engineered to express the complete ORF with an expression tag. Expression varies depending on the nature of the gene.
<b>Components:</b>	The ORF clone is ion-exchange column purified and shipped in a 2D barcoded Matrix tube containing 10ug of transfection-ready, dried plasmid DNA (reconstitute with 100 ul of water).
<b>Reconstitution Method:</b>	<ol style="list-style-type: none"><li>1. Centrifuge at 5,000xg for 5min.</li><li>2. Carefully open the tube and add 100ul of sterile water to dissolve the DNA.</li><li>3. Close the tube and incubate for 10 minutes at room temperature.</li><li>4. Briefly vortex the tube and then do a quick spin (less than 5000xg) to concentrate the liquid at the bottom.</li><li>5. Store the suspended plasmid at -20°C. The DNA is stable for at least one year from date of shipping when stored at -20°C.</li></ol>
<b>RefSeq:</b>	<a href="#">NM_178688.4</a>
<b>RefSeq Size:</b>	6638 bp
<b>RefSeq ORF:</b>	2586 bp
<b>Locus ID:</b>	226251
<b>UniProt ID:</b>	<a href="#">Q8K4G5</a>
<b>Cytogenetics:</b>	19 52.09 cM
<b>Gene Summary:</b>	May act as scaffold protein (By similarity). May play a role in the development of the retina. Has been suggested to play a role in axon guidance.[UniProtKB/Swiss-Prot Function]