

## Product datasheet for **MG222508**

### Unc13b (NM\_001081413) Mouse Tagged ORF Clone

#### Product data:

Product Type:	Expression Plasmids
Product Name:	Unc13b (NM_001081413) Mouse Tagged ORF Clone
Tag:	TurboGFP
Symbol:	Unc13b
Synonyms:	Munc13-1; Munc13-2; Unc13a; Unc13h1; Unc13h2
Mammalian Cell Selection:	Neomycin
Vector:	pCMV6-AC-GFP (PS100010)
E. coli Selection:	Ampicillin (100 ug/mL)
ORF Nucleotide Sequence:	>MG222508 representing NM_001081413 Red=Cloning site Blue=ORF Green=Tags(s)

TTTTGTAATACGACTCACTATAGGGCGGCCGGAATTCGTCGACTGGATCCGGTACCGAGGAGATCTGCC  
GCC**CGATCGCC**

ATGTCGCTGCTGTGTGCGTGTAAAAGAGCCAAATCCAGGGTTCACCAGATAAAATTTAACACATATG  
TGACCCTGAAAGTCCAGAACGTGAAGAGCACAACGTAGCAGTTCGTGGTGATCAGCCTTCTGGGAGCA  
GGATTTTCATGTTGAGATCAGTCGTCTGGACCTGGGCCTAAGTGTGGAGGTGTGGAACAAGGGACTGATA  
TGGGACACAATGGTGGGCACCGTGTGGATTGCACTGAAGACAATCCGTCAGTCGGATGAGGAAGGGCCCG  
GGGAGTGGTCTACACTGGAGGCAGAGACGTTAATGAAAGATGATGAGATCTGTGGAATAAAAACCAAC  
TCCTCATAAAATCTTGCTTGATACAAGATTTGAGCTGCCTTTTGACATCCAGAGGAGGAAGCCAGATAT  
TGGACCTACAAATGGAGCAAAATCAATGCCTTGGCAGATGATAATGAGTATTCTAGTCAAGAAGAAAGCC  
AGAGGAAGCCATTACCCACTGCTGCCGCCAGTGTGTCACTGGACCTATTTGGGCTGGGGAGAGCATCA  
GACCTTTGAAGACCCTGATAGTGCCGTTGATGACCGAGACAGTGACTACCGCAGTGAGACCAGCAATAGC  
GCCCCACCTCCTTACCACAGACTACCCAGCCAAACGCTTCTGTGCACCAAGTTCCTGTTCTGTGCGGC  
TGCCACAGCAGCTCTTTCTTCAAGGCAGTTCATGACTCTTGAATGACTCTATGCAGAGTTACGACCT  
TGATTATCCAGAGCGTCGGGCCCTCAGCCCTACCAGCAGTAGTAGGTATGGCTCCTCCTGTAATGTGAGT  
CAAGGAAGCTCTCTGCTGAGTGGACCGATCATGAGCAAGATGATGATGGTCCGGAGAGGGGACT  
CCATTCATTCTAGTCATAGCTATGGCAGCCTCTCAAAGATGGCCAGGCTGGTTTGGGAGAACAAGAGAA  
AGCCTTGAAGTGACATGTGAATCAGAAAAAGAGAAAACAGGTGAATCCAAGGAGATGAGAGATGATGCT  
ACAATCTACCCTCCTCAGATCTGGTGCTGCATAAGGACCATGTCCTAGGACCCAGGAGAGTCTTCCTG  
AGGAGACCGCATCATCGCCATTTACCCAGGCCAGAGCACACTGGTTCCGAGCGGTTACCAAGGTCGGACT  
CCAAGTGCAGGAGATTTAGATGATGGTACCCCTCCTTGCTCAGTGGCTCCAGAAAGGGCCAGCTGGA  
GGGCTCTATGGCATCGACAGCATGCCAGATCTACGAAGGAAGAAGCCACTGCCACTGTGTCAGTGATCTGT  
CACTGGTCCAGTCACGAAAGCTGGGATTACATCTGCTATGGCTACACGTACCTCTCAAGGATGAAGA  
ACTGAAATCTCATGTGTATAAGAAAACCTGCAGGCCCTAATCTACCCCATCTCGTGTACCACGCCCCAC



[View online »](#)

AACTTTGAGGTCTGGTCTGCCACTACACCTACCTATTGCTATGAGTGTGAAGGCTTGCTCTGGGGCCTTG  
CCCGGCAAGGCATGCGCTGCAGCGAGTGTGGAGTCAAGTGCCATGAGAAGTGCCAGGACCTGCTCAATGC  
TGACTGCTACAGCGGGCTGCTGAAAAGAGCTCTAAGCATGGAGCTGAGGACCGAACTCAGAACATTATC  
ATGGCCATGAAGGACCGTATGAAGATCCGAGAACGGAATAAACAGAGATCTTTGAGGTTATCCGGGATG  
TGTTACAGTGAGCAAAGTTGCGCATGTGCAGCAGATGAAAACAGTAAAGCAGAGTGTCTGGATGGCAC  
CTCCAAGTGGTCAGCCAAAATTACCATCACGGTGGTTTGTGCCAGGGCCTACAAGCCAAAGACAAGACA  
GGATCCAGTGACCCTTATGTGACTGTGCAAGTTGGGAAAACCAAGAAGCGCACCAAGACCTTTTTGGAA  
ATTTGAATCCTGTTTGGGAAGAGAAGTTCCATTTTGTGAGTGCCACAACCTTCTGATCGAATTAAGGTACG  
CGTGTGGGATGAGGATGATGACATCAAGTCCAGAGTAAAGCAGCGGCTAAAGCGAGAGTCAGATGATTTT  
CTTGGCCAAACTATCATTGAAGTTCGAACGCTGAGTGGAGAGATGGATGTCTGGTACAATCTGGAGAAGA  
GAACAGACAAGTCAGCTGTCTCAGGGGCTATCCGACTTCAAATCAGTGTGGAGATCAAGGGGGAGGAGAA  
GGTAGCCCATACCATGTACAATATACATGTCTCCATGAGAACCTTTTCCATTACCTCACAGACATTCAG  
GGCAGTGGAGGAGTCTGGATCCCAGAGGCTCGGGGGACGATGCATGGAAGGTGTACTTTGATGAGACAG  
CCCAAGAAATTGTGGATGAATTCGCTATGCGCTATGGCATCGAGTCCATTTATCAGGCCATGACGCACTT  
TGCATGTTTGTCACTCAAGTACATGTGTCTGGTGTACCAGCCGTGATGAGCACCTTACTGGCCAAACATC  
AATGCCTATTATGCTCACACAACCTGCCTCCACTAACGTCTCTGCATCTGATCGTTTTGCAGCCTCCAAC  
TTGGTAAAGAAAGATTTGTAAAACCTGCTGGACCAGCTACACAACCTCACTGAGGATAGACCTCTACATA  
CAGGAATAACTTTCTGCTGGGAGCCCTGAGCGGCTTCAGGATTTAAAGTCTACAGTGGATTTGCTGACC  
AGCATTACTTTCTCAGGATGAAGGTGCAAGAACCTCAGAGCCCTCCAAGAGCCAGCCAGGTGGTAAAGG  
ACTGTGTGAAAGCCTGCTTGAACCTACATATGAATACATCTTCAAACAACCTGCCATGACCTCTACAGTCA  
CCAGTATCAGCTGCAGGAACAACCTCTAGAGGAACCCAGGGCCAGCATTCCGAACCTGGATTTCTGGCCC  
AACTTATCACACTCATTGTTTCGATCATAGAGGAGGATAAGAATTCCTACACACCTGTTCTGAGCCAGT  
TTCCTCAGGAGTTGAACGTAGGAAAAGTCAGTGCAGAAGTGATGTGCCATCTGTTTGTCTCAAGACATGAA  
ATATGCACTGGAGGAACACGAGAAAAGACCGGCTGTGTAAGAGTGCTGACTACATGAACCTGCACCTCAAG  
GTGAAGTGGCTCCACAATGAATATGTGCCGATCTGCCTGCCCTCCAGGGCAAGTGCCTGAGTACCCAG  
CGTGGTTTGTGAGCAGTTTGTGCTACAGTGGCTAGATGAGAATGAAGATGTGTCACTGGAATTCCTTCTG  
GGCCTTGGAACGAGATAAGAAGGATGGTTCCAGCAGACATCAGAGCATGCCTTGTTCCTGTTCTGTG  
GTGGACGTCTTTACACAACCTCAACCAGAGCTTTGAGATCATCCGGAAGTTGGAATGTCCAGACCCCAACA  
TCCTTGCCCACTACATGAGAAGGTTTGTAAAGACCATTGGGAAAGTGTGATGCAGTATGCAGACATCTT  
ATCAAAGAACCTCCAGCTTACTGCACAAAGGAGAGACTGCCCTGTATCCTGATGAACAACATGCAGCAA  
CTGAGGGTCCAGCTGGAGAAAATGTTTGGGCCATGGGAGGCAAAGAGCTGGACTCTGAAGCTGCAGACA  
GTCTGAAGGAGCTGCAGGTGAAACTGAATACAGTTCTGGATGAGCTTAGCATGGTGTGGAAACAGCTT  
CCAGGTGCGGATGATGAATGTGTTTCGACAAAATGGCTGACATCCTGGGCCAAGTTCGGGGCACAGGGAAT  
GCATCCCTAACGCCAGGGCCTCGGTGGCTCAGGATGCAGATAGTGTGCTGCGACCTCTCATGGACTTCC  
TGGATGGCAACCTCACGCTGTTTCCACTGTGTGTGAGAAGACAGTTCGAAGCGGGTCTGAAGGAGCT  
CTGGCGGGTGGTGTGAACACCATGGAGCGGGTATTGTCTGCCCACTCACTGACCAGACGGGCACC  
CAGCTGATCTTAACTGCTGCCAAGGAGCTGAGCCAGCTTCCAACCTCAAGGACCACATGGTACGGGAGG  
AAACACGGAATCTCACTCCAAGCAGTGTGCTGTCTCGACTTGGCCTTGGACACCATCAAGCAACTT  
CCATGCAGGAGGCAATGGTCTGAAGAAAACCTTCTGGAAAAGAGCCAGACCTGCAGTCTGCGTTAT  
GCCCTCTCTGTATACACAGACTACAGACACTCTCATCAAGACATTTGTGCGCTCACAGACTGCCAGG  
GGGCTGGTGTGGATGACCCCGTGGGAGAAGTCTCTATTAGGTGGACTTATTTACACATCCTGGCACTGG  
GGAGCATAAGGTCACAGTAAAAGTGGTAGCAGCCAATGACCTCAAGTGGCAGACAGCGGGTATGTTCCGG  
CCTTTTGTGGAAGTGACCATGGTTGGCCACACCAAAGTGATAAGAAGAGGAAGTTCACAACCAAGTCTA  
AAAGTAACAACCTGGACTCCAAGTACAACGAGACGTTTCACTTCTCCTGGGAAATGAAGAGGGTCCAGA  
GGCCTATGAATTGCAGATCTGTGTGAAGGATTACTGCTTGGCCGGGAGGATCGTGTGATAGGACTGGCA  
GTGATGCCCTGAGGGATGTGCCAGCTAAGGGCAGCTGTGCTGCTGGTGGCCACTGGGCCGGAAGATCC  
ATATGGATGAGACAGGCATGACCATTCTCCGATTCTGTCTCAGAGGAGCAATGACGAGGTAGCCCGAGA  
GTTCTGTAAGCTCAAATCAGAGTCTCGATCCACAGAGGAAGGGAGC

AGCGGACCGACGCGTACGCGGCCGCTCGAG - GFP Tag - GTTTAA

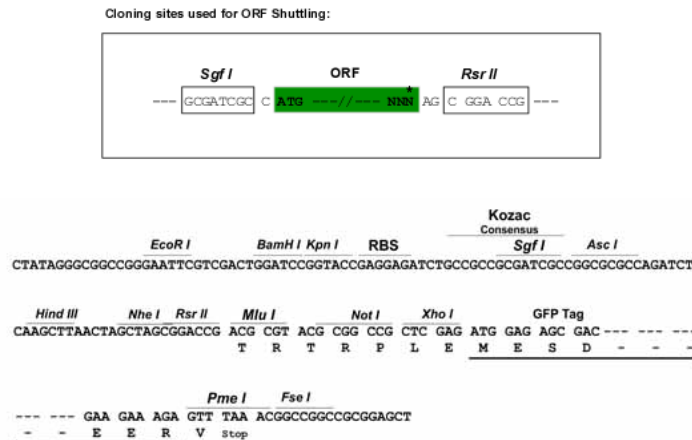
Protein Sequence: >MG222508 representing NM\_001081413  
 Red=Cloning site Green=Tags(s)

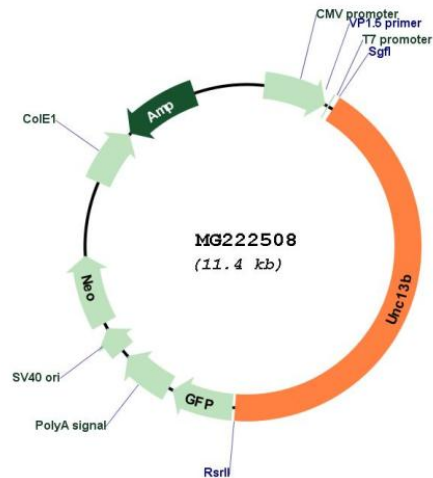
MSLLCVRVKRAKFGQSPDKFNTYVTLKVQNVKSTTVAVRGDQPSWEQDFMFEISRLDLGLSVEVWNKGLI  
 WDTMVGTVWVIALKTIHQSDDEEGPGEWSTLEAETLMKDDEICGTKNPTPHKILLDRFELPFDIPEEEARY  
 WTYKLEQINALADDNEYSSQEESSQRKPLPTAAAQCCHWTYLGWGEHQTFEDPDSAVDDRRSDYRSETSNS  
 APPPYHTTTQPNASVHQFPVPVRLPQQLFLQGSSHDSCNDMSQSYDLDPERRALSPSSSRYGSSCNVS  
 QGSSLLSELDQYHEQDDDRERDSIHSSHSYGLSKDGGQAGLGEQEKALEVTCESEKEKTGESKEMRDDA  
 TIYPSPDLVLHKDHVLPQESLPEETASSPFTQARAHWFRAVTKVRLQLQEISDDGDPSPLPQWLPEGPAG  
 GLYIGDIMPDLRRKKPLPLVSDLSLVQSRKAGITSAMATRTSLKDEELKSHVYKKTQLALIYPISTTPH  
 NFEVWSATTPTYCYECEGLLWGLARQGMRCSECGVKCHEKQDLLNADCLQRAAEKSSKHGAEDRTQNI  
 MAMKDRMKIRERNKPEIFEVIRDVFTVSKVAHVQQMKTVKQSVLDGTSKWSAKITITVVCAQGLQAKDKT  
 GSSDPYVTVQVGKTKRKTIFGNLNPVWEEKFHFECNNSDRIKVRVWDEDDDIKSRVQRLKRESDDF  
 LGQTIIEVRTLSGEMDVWYNLEKRTDKSAVSGAIRLQISVEIKGEEKVAPYHVQYTCLENLPHYLTDIQ  
 GSGGVWIPEARGDDAWKVFYDETAQEIVDEFAMRYGIESIQAMTHFACLSSKYMCPGVPVAVMSTLLANI  
 NAYYAHTTASTNVSASDRFAASNFGKERFVKLLDQLHNSLRIDLSTYRNNFPAGSPERLQDLKSTVDLLT  
 SITFFRMKVQELQSPPRASQVVKDCVKAACLNSTYEYIFNNCHDLYSHQYQLQEQLPEEPGPSIRNLDFWP  
 KLITLIVSIIIEEDKNSYTPVLSQFPQELNVGKVSAEVMWHLFAQDMKYALEEHEKDRCLKSADYMNLFHK  
 VKWLHNEYVYRDLPALQGGQVPEYPAWFEQFVLQWLDENEDVSLFLRGLERDKKDGQQTSEHALFSCSV  
 VDVFQTLNQSFEIRKLECPDPNLAHYMRRFAKTIGKVLQYADILSKNFPACTKERLPCILMNMNQ  
 LRVQLEKMFAMGGKELDSEAADSLKELQVKNLTVLDELDMVFGNSFQVRIDECEVRQADILGQVRGTGN  
 ASPNARASVAQDADSVLRPLMDFLDGNLTLFATVCEKTVLKRVLKELWRVVMNTMerviVLPPLTDQGT  
 QLILTAAKELSQLSKLDHVMREETRNLTTPKQCAVLDLALDTIKQYFHAGGNLKKTFLEKSPDLQSLRY  
 ALSLYTQTTDTLTKTFVRSQTAQAGVDDPVGEVSIQVDLFTHPGTGEHKVTVKVVAAANDLKWQTAGMFR  
 PFVEVTMVGPHQSDKKRKF TTKSKSNNWTPKYNETFHFLLGNEEGPEAYELQICVKDYCFAREDRVIGLA  
 VMPLRDVAAGKSCACWCPLGRKIHMDETGMTILRILSQRSNDEVAREFVKLKSESRSSTEEGS

SGPTRRRLE - GFP Tag - V

Restriction Sites: SgfI-RsrII

Cloning Scheme:



**Plasmid Map:**


**ACCN:** NM\_001081413

**ORF Size:** 4803 bp

**OTI Disclaimer:** The molecular sequence of this clone aligns with the gene accession number as a point of reference only. However, individual transcript sequences of the same gene can differ through naturally occurring variations (e.g. polymorphisms), each with its own valid existence. This clone is substantially in agreement with the reference, but a complete review of all prevailing variants is recommended prior to use. [More info](#)

**OTI Annotation:** This clone was engineered to express the complete ORF with an expression tag. Expression varies depending on the nature of the gene.

**Components:** The ORF clone is ion-exchange column purified and shipped in a 2D barcoded Matrix tube containing 10ug of transfection-ready, dried plasmid DNA (reconstitute with 100 ul of water).

**Reconstitution Method:**

1. Centrifuge at 5,000xg for 5min.
2. Carefully open the tube and add 100ul of sterile water to dissolve the DNA.
3. Close the tube and incubate for 10 minutes at room temperature.
4. Briefly vortex the tube and then do a quick spin (less than 5000xg) to concentrate the liquid at the bottom.
5. Store the suspended plasmid at -20°C. The DNA is stable for at least one year from date of shipping when stored at -20°C.

**RefSeq:** [NM\\_001081413.1](#), [NP\\_001074882.1](#)

RefSeq Size: 6374 bp

RefSeq ORF: 4806 bp

Locus ID: 22249

UniProt ID: [Q9Z1N9](#)

Cytogenetics: 4 A5

**Gene Summary:** Plays a role in vesicle maturation during exocytosis as a target of the diacylglycerol second messenger pathway. Is involved in neurotransmitter release by acting in synaptic vesicle priming prior to vesicle fusion and participates in the activity-dependent refilling of readily releasable vesicle pool (RRP) (By similarity). Essential for synaptic vesicle maturation in a subset of excitatory/glutamatergic but not inhibitory/GABA-mediated synapses. [UniProtKB/Swiss-Prot Function]