

## Product datasheet for **MG222502**

### Tie1 (NM\_011587) Mouse Tagged ORF Clone

#### Product data:

**Product Type:** Expression Plasmids  
**Product Name:** Tie1 (NM\_011587) Mouse Tagged ORF Clone  
**Tag:** TurboGFP  
**Symbol:** Tie1  
**Synonyms:** D430008P04Rik; TIE; tie-1  
**Mammalian Cell Selection:** Neomycin  
**Vector:** pCMV6-AC-GFP (PS100010)  
**E. coli Selection:** Ampicillin (100 ug/mL)  
**ORF Nucleotide Sequence:** >MG222502 representing NM\_011587  
Red=Cloning site Blue=ORF Green=Tags(s)

TTTTGTAATACGACTCACTATAGGGCGGCCGGAATTCGTCGACTGGATCCGGTACCGAGGAGATCTGCC  
GCC**CGATCGCC**

ATGGTCTGGTGGGGATCCTCTTTGCTGCTCCCCACTCTTTTCTTGGCCTCTCATGTTGGTGGTCTGTTG  
ACTTAACATTGCTGGCCAACCTGCGCATCACAGACCCCGAGCTTTCTTCTGACCTGCGTGTCTGGTGA  
GGCCGGAGCAGGGAGGAGCTCGGACCCGCCCTGCTGCTGGAGAAGGATGATCGCATCGTGGCACCTTC  
CCGCCGGGGCAGCCCTGTACCTGGCACGAACGGTTCTACCAGGTCACGCTGAGGGGCTTCTCCAAGC  
CCTCGGATTTGGTAGGCGTCTTCTCCTGTGTGGGTGGTGTGGCGCGGGCGCACTCGAGTTCTCTATGT  
GCACAACAGCCCAGGGGCACACCTGTTTCCAGACAAGGTCACACACCGTGAACAAAGGTGACACTGCT  
GTGCTTTCTGCCATGTGCACAAGGAAAAGCAGACTGACGTGATCTGGAAGAACAACGGATCCTACTTCA  
ATACCCTAGACTGGCAAGAGGCCGATGACGGGCGTTTTCAACTGCAGCTCCAAAATGTACAGCCACCATC  
AAGTGGCATCTACAGTGGCACCTACCTAGAGGCCAGCCCCCTGGGCGAGTGCCTTCTTTTGGCTCATCGT  
CGAGGCTGTGGGGCTGGACGCTGGGGGCCAGGATGTGTCAAGGATTGCCCGGGCTGCCTGCATGGAGGT  
TCTGTGATGACCATGATGGCAATGTGTGTGTCCCCAGGATTCAGTGGCACCCGCTGTGAGCAGGCCTG  
CAGGGAGGGTCTTTTTGGACAGAGCTGTGAGAACAGTGGCCAGGCACAGCAGGTTGTAGAGGTCTCACC  
TTCTGCCTCCCGATCCCTATGGCTGTTCTGTTGGATCTGGCTGGAGAGGAAGCCAGTCCAGGAAGCAT  
GTGCACCTGATCATTGTTGGGGCTGATTGTGCGCTCCAGTCCAGTGTCAAATGGTGGCACTTGTGACCG  
GTTGAGCGGCTGCGTCTGCCCTCTGGGTGGCATGGAGTCCACTGTGAAAAGTCAGACCCGATCCCCAG  
ATCCTCAGTATGGCCACAGAGGTGGAGTTCAACATAGGGACGATGCCCGGATCAACTGTGCAGTGGCG  
GGAATCCCTTCCAGTGGGGCAGCATGAAACTTCGCAAGCCAGATGGCACCATGCTTTTGTCTACCAA  
AGTCATTGTGGAGCCAGACAGGACCACAGCAGAGTTTGAAGTGGCCAGTTTACTCTTGGGGACAGTGGG  
TTCTGGGAATGCCGCGTATCGACTTCTGGTGGCAAGACAGCCGGCGCTCAAGGTCAATGTCAAAGTAC  
CCCCAGTGCCTTTGACTGCACCTCGACTCCTGGCCAAGCAGAGCCGTGAGCTTGTGGTCTCCCCACTGGT  
CTCCTTTAGTGGGGATGGACCATCTCCTGTGCGCCTGCACTACCGGCCCCAGGACAGCAGCATTGCC



TGGTCTGCCATTGTGGTGGATCCCAGTGAGAATGTGACATTAATGAACCTGAAGCCAAAGACAGGATACA  
 ATGTCCGAGTGCAGCTGAGCCGCCAGGGGAAGGAGGAGAAGGAGGCTGGGGACCTTCTGCCCTTATGAC  
 TACTGACTGTCTGAGCCTTGTCTGCAGCCCTGGCTAGAGAGCTGGCACGTGGAGGGTCTGACAGGCTC  
 CGTGTGAGCTGGTCTCTACCTCGGTGCCACTGTCCGGTATGGTTTCTGCTGCGCCTGTGGGATGGGG  
 CCCGGGGACAGGAGAGCGGGGAGAATCTCATTCCCCAGGCCCGACTGCCCTCCTGACTGGACTCAC  
 GCCGGGACCCACTACCAGCTGGATGTGCGACTGTATCACTGTACCCTCCTGGCCCTGCCCTCACCCCT  
 GCGCATGTGCACCTGCCCCAGCGGGCTCCAGCTCCCCGCCACCTCCATGCCACCCCTCCTGAGACT  
 CTGAGATTCAACTCATGTGGCAGCATCCCAGGCTCCGTCTGGCCTATATCCAAGTACATCGTGGAGAT  
 TCAGGTGGCCGGGGCTCAGGAGACCCACAGTGGATGGATGTAGACAGGCCCGAGGAGACAAGCATTATT  
 GTTCGTGGCCTCAATGCTAGCACACGATATCTTTTCCGTGTGCGGGCCAGTGTGCAGGGTCTTGGCGACT  
 GGAGCAATACAGTAGAAGAGGCCACTCTGGGCAATGGGCTGCAGAGTGAAGACCCAGTCCGAGAAAGCCG  
 GGCAGCTGAAGAAGGCCTGGATCAGCAGCTGGTCTGGCTGTGGTAGGTTCCGTCTCTGCCACTGCCTC  
 ACCATCCTGGCTGCCCTTTAGCCTTGGTGTATCCGAAGAAGCTGCCTACATCGGAGACGCACCTTCA  
 CTTACCAGTCAAGTCCGGTGAAGAGACCATCCTGCAGTTCAGCTCAGGGACCTTGACCTTGACCCGGCG  
 ACCGAAGCCACAGCCTGAGCCCTTGAGTTACCCCGTGTGGAGTGGGAGGACATCACCTTTGAGGACCTC  
 ATAGGGGAGGGCAACTTTGGCCAAGTATCCGGGCCATGATCAAGAAGGACGGGCTCAAGATGAACGCGAG  
 CCATCAAGATGCTAAAAGAGTATGCGTCTGAAAATGACCATCGAGACTTTGCAGGTGAAC TAGAAGTTCT  
 GTGCAAACTAGGACACCACCCCAATATTATCAACCTCTTGGGGCCCTGTGAGAACCAGGGCTACTTGTAT  
 ATTGCTATCGAATACGCCCCCTATGAAACCTACTGGACTTCTGAGAAAAGAGCAGGGTCTGGAGACTG  
 ATCCAGCTTTTGTCTGAGAGCATGGGACGGCTCCACACTCAGCTCTCGGCAGCTGCTGCGCTTGGCAG  
 TGATGCAGCCAACGGCATGCAGTACCTTAGTGAGAAGCAGTTCATTACAGGGACCTGGCTGCCGAAAT  
 GTGCTGGTCCGAGAGAACCTGGCCTCAAGATTGCAGACTTTGGCCTTCTCGAGGGGAGGAGGTATAG  
 TGAAGAAGACAATGGCCGCTCCCTGTGCGTTGGATGGCCATTGAGTCCCTCACTACAGCGTTTATAC  
 CACCAAGAGTGTCTGTGCTCTTGGGTCTCCTCTGGGAGATAGTGAGCCTTGAGAGCACGCCCTAC  
 TGTGGCATGACCTGTGCTGAGCTCTACGAGAAGCTGCCTCAAGGCTATCGCATGGAGCAGCCTCGAACT  
 GCGATGACGAAGTGTACGAGCTGATGCGCAGTGTGGCGGATCGGCCCTATGAGCGCCCCCTTTGCT  
 TCAGATCGCACTACAGTTGGGCCGATGCTGGAAGCCAGGAAGCCTACGTGAACATGCTGCTGTTGAG  
 AACTTCACCTATGCGGGCATCGATGCCACAGCTGAGGAGGCC

ACGCGTACGCGGCCGCTCGAG – GFP Tag – GTTTAA

**Protein Sequence:**

>MG222502 representing NM\_011587  
 Red=Cloning site Green=Tags(s)

MVWVGSSLLLPFLASHV GASVDL TLLANLRITDPQRFFLTCVSGEAGAGRSSDPPLLEKDDRIVRTF  
 PPGQPLYLARNGSHQVTLRGF SKPSDLVGVFSCVGGAGARRRTRVLYVHNSPGAHLFPDKVHTVVKGD  
 TAVLSAHVHKEKQTDVIWKNNGSYFNLDWQEADDGRFQLQLQNVQPPSSGIYSATYLEASPLGSAFFRLIV  
 RCGCAGRWGPGVKDCPGCLHGGVCHDHDGECVPPGF TGRCEQACREGRFGQSCQECPGTAGCRGLT  
 FCLPDPYGCSCGSGWRG SQQEACAPDHF GADCRLLQCQCQNGGTCDFRSGCVCPSGWHGVHCEKSDRIPQ  
 ILSMATEVEFNI GMTPRINCAAAGNPFVVRGSMKLRKPDGTMLLSTKVI VEPDRTTAEFEVPSLTLGDSG  
 FWECRVSTSGGQDSRRFKVNVKVPVPLTAPRLLAKQSRQLVVSPLVSFSGDGP ISSVRLHYRPQDSTIA  
 WSAIVVDPSENVTL MNLKPKTGYNVRVQLSRPEGEGEGGWGPSALMTTDCPEPLLQPWLESWHVEGPDR  
 RVSWLPSVPLSGDGFLRLWDGARGQERRENI SFPQARTALLTGLTPGTHYQLDVRLYHCTLLGPASPP  
 AHVHLPPSGPPAPRHLHAQALSDSEIQLMWQHPEAPSGPISKYI VEIQVAGGSGDPQWMDVDRPEETSII  
 VRGLNASTRYLFRVRASVQGLGDSNTVEEATLGNLQSEDPVRESRAAEGLDQQLVLAVVGSVSATCL  
 TILAALLALVCIRRSLHRRRTFTYQSGSGEETILQFSSGTLTLTRRPKQPEPLSYPLEWEDITFEDL  
 IGEFNFGQVIRAMIKKDLKMNAAIKMLKEYASENDHRDFAGELEVLCCKLGHHPNIIINLLGACENRGYLY  
 IATEYAPYGNLDFLRKSRVLETPAFAREHGTASTLSSRQLLRFASDAANGM QYLSEKQFIHRDLAARN  
 VLVGENLASKIADFLSRGEEVYKKTMGRLPVRWMAIESLNYSVYTTKSDVWSFGVLLWEIVSLGGTPY  
 CGMTCAELYEKLPQGYRMEQPRNCDEVEYELMRQCWRDRPYERPPFAQIALQLGRMLEARKAYVNMSLFE  
 NFTYAGIDATAEEA

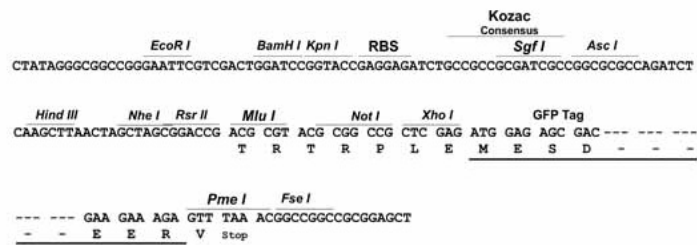
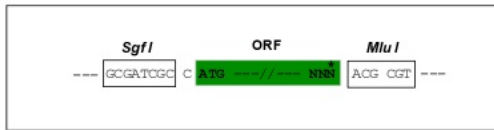
TRTRPLE – GFP Tag – V

Restriction Sites:

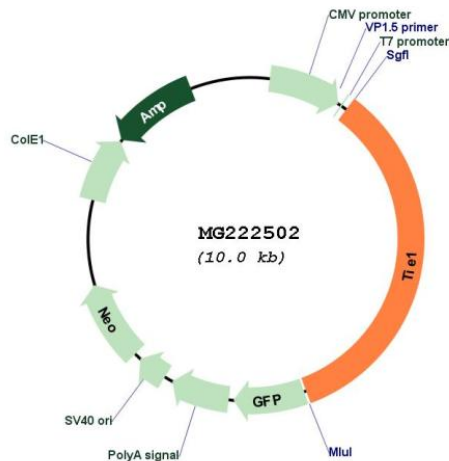
Sgfl-MluI

Cloning Scheme:

Cloning sites used for ORF Shuttling:



## Plasmid Map:



ACCN: NM\_011587

ORF Size: 3402 bp

OTI Disclaimer: The molecular sequence of this clone aligns with the gene accession number as a point of reference only. However, individual transcript sequences of the same gene can differ through naturally occurring variations (e.g. polymorphisms), each with its own valid existence. This clone is substantially in agreement with the reference, but a complete review of all prevailing variants is recommended prior to use. [More info](#)

OTI Annotation: This clone was engineered to express the complete ORF with an expression tag. Expression varies depending on the nature of the gene.

Components: The ORF clone is ion-exchange column purified and shipped in a 2D barcoded Matrix tube containing 10ug of transfection-ready, dried plasmid DNA (reconstitute with 100 ul of water).

Reconstitution Method:

1. Centrifuge at 5,000xg for 5min.
2. Carefully open the tube and add 100ul of sterile water to dissolve the DNA.
3. Close the tube and incubate for 10 minutes at room temperature.
4. Briefly vortex the tube and then do a quick spin (less than 5000xg) to concentrate the liquid at the bottom.
5. Store the suspended plasmid at -20°C. The DNA is stable for at least one year from date of shipping when stored at -20°C.

RefSeq: [NM\\_011587.1](#)

RefSeq Size: 3883 bp

RefSeq ORF: 3405 bp

Locus ID: 21846

UniProt ID: [Q06806](#)

Cytogenetics: 4 54.67 cM

**Gene Summary:** Transmembrane tyrosine-protein kinase that may modulate TEK/TIE2 activity and contribute to the regulation of angiogenesis.[UniProtKB/Swiss-Prot Function]