

Product datasheet for **MG222495**

Sema3g (NM_001025379) Mouse Tagged ORF Clone

Product data:

Product Type:	Expression Plasmids
Product Name:	Sema3g (NM_001025379) Mouse Tagged ORF Clone
Tag:	TurboGFP
Symbol:	Sema3g
Synonyms:	AK129018
Mammalian Cell Selection:	Neomycin
Vector:	pCMV6-AC-GFP (PS100010)
E. coli Selection:	Ampicillin (100 ug/mL)



[View online »](#)

ORF Nucleotide Sequence:

>MG222495 representing NM_001025379
 Red=Cloning site Blue=ORF Green=Tags(s)

TTTTGTAATACGACTCACTATAGGGCGGCCGGGAATTCGTCGACTGGATCCGGTACCGAGGAGATCTGCC
 GCC**CGGATCGCC**

ATGGACCCATCTGCGTGGGCCATCTGCTGCCTCCTGGGGAGCCTTCTGTTCCATGTGGGCATCCCCAGCC
 CTGGTCCCAGCCCCAGTGTGCCTCGTCTGCGGCTCCTACAGAGATCTCCTGTCTACCAACCGCTCTGC
 CATCTTTCTGGGCCACGGGTTCCCTAGACCTCCAAGTCATGTACCTGGATGAGTATCGAGATCGCCTC
 TTTCTGGGAAGCCGAGATGCCCTTACTCTCTGAGACTGGATCAGGCATGGCCAGACCCCGGGAGGTCT
 TGTGGCTGCCACAGCCAGGACAGAAGGTGGAATGTGTCCGCAAGGGAAAAGACCCTTTGACGGAGTGTGC
 CAACTTCGTGCGGTCTTACAACCCATAACCGGACCCATCTGCTGGCCTGTGGCACAGGAGCCTTCCAA
 CCCATCTGCACCTTCATCACAGTGGGCATCGAGGGGAGCATGTGCTCCGCTTGGATGCTAGCAGCGTCG
 AGAATGGAAGGGGGCGTTGCCACATGAGCCCAGCCGACCCTTCCGACGACCTTTGTAGTGGGGAGCT
 ATACACAGGTCTCACTGCCGATTTCTGGGACGTGAGGCCATGATTTTCCGGAGTGGGGTCCCCGACCA
 GCCTGCGTTCTGACTCTGACCAGAGCCTCTACATGAACCCCGTTTGTGATGGCTGCTCGGATCCAG
 ATAACTCTGACCGGGACGACGACAAGGTGACTTCTTCTCTCCGAGACTGTCCCGTACCAGATGGTGG
 CCCAGGTGATGTACCATCAGCCGAGTGGGCCGCGTCTGTGTGAATGATGCTGGTGGCCAGCGGGTGTG
 GTGAACAAATGGAGCACTTCTCAAGGCCCGGCTGGTGTGCTCTGTGCCTGGCCCGGTGGGGTGA
 CTCACCTTGACAGCTAGAGGATGTGTTCTGTGTGGCCCAAGGCCGGGAAGAGCCTCGAGGTGTATGC
 GCTGTTGACACTGTGAGTGTGTTCAGGGCTTTGCTGTCTGTGTGTACCACATGGTAGACATCTGG
 GAGGCTTCAATGGGCCCTTTGCCACCGAGATGGCCCTCAGCATCAGTGGGACCCTATGGGGCAAGG
 TGCCCTTCCCTCGCCCCGGTGTGTGCTCCTAGCAAGATGACCGCACAGCCAGGCCGACCCTTTGGCAGC
 CAAGGACTACCCAGACGAGGTGTGAGTTCAGTTCGAGACCCACTCATGTTCCAGCCTGTGAGGCCT
 CGGCGTGGCCGCCCTGTCTGGTCAAACTCACTTGGCTCAGCGACTGCGCCAGATTGTGGTGGATCGAG
 TGGAGGCTGAGGATGGGACCTATGATGTCATCTTCTAGGGACTGATTCGGGTTCTGTGCTCAAAGTCAT
 TGCCCTCCAGGTGGTGGCTTACTGAACCTGAAGAGGTGGTTTTGGAGGAGCTCCAGGTGTTAAGGTG
 CCAACGCCATCACTGAGATGGAGATCTGTCAAAGGCCAAACGCTGTATGTGGCTCTCCACTGGGTG
 TGGCCCGCTGCAGCTGCACCAGTGTGAGACTACGGCAGTGCCTGTGCTGAGTGTGCCTGGCCCGGA
 CCCATACTGTGCTTGGGATGGCACTGCCTGTGCCGCTACCGCCAGCTCTGGCAAGCGCAGGTTCCGT
 CGGCAGGACATACGCCATGGCAACCCTGTGTGAGTGTCTGGCCAGGGCCAGGCCAAAACAAAGCAG
 CTTCCGGGCTCATGACCAGAGTCTTGGCACAGAGCACAAACAGCACCTTCCCTGAGTGCCTGCCAAGTC
 TCCTCAGGCTGCAGTGGCTGGTCTTACAAGGCCAGGGGATAAGGGGACTGACCAGGTGAAGACAGAT
 GAGAGAGTTGTGCAGACGGCCAAAGGGCTGCTGTTCCGAAGGCTCAGCCGCCATGACGCAGGAACTACA
 CTTGCACCACTCTGGAACATGGCTTCTCCAGACCGTGGTCCGTTTTGCCCTGGAGGTGATTGCAGCTGT
 GCAACTGGACAGCCTGTTCTTCGGGAGTCAAGGCTAGAGGAGCCCTCAGCCTGGGGAAGCCTGGCCTCT
 GCCTCCCCAAGACTTGGTATAAGGACATCCTTCAGCTCACGGGCTTCGCCAACCTGCCCGTGTGGATG
 AGTACTGTGAACGTGTATGGTGCAGGGGTGTCGGGGAGCGCTCAGGCTCCTTCCGCGAAAGGGAAAGCA
 AGCGAAGGGCAAGAGCTGGCAGGGCTGGAACCTGGCAAGAAGATGAAGAGCAGGCTGCTGGCTGAGCAC
 AATCGGACACCCCGGGAGGTAGAAGCCACA

ACGCGTACGCGGCCGCTCGAG – GFP Tag – GTTTAA

Protein Sequence: >MG222495 representing NM_001025379
 Red=Cloning site Green=Tags(s)

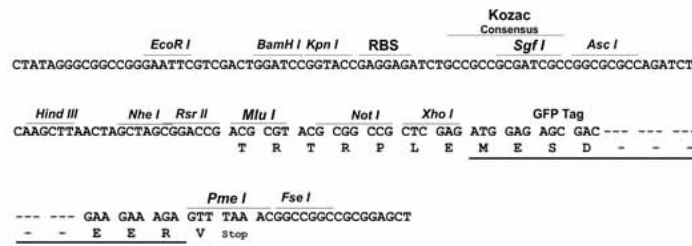
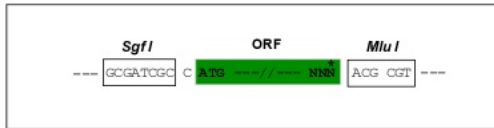
```
MDPSAWAICLLGSLLFHVGIPSPGSPSPVRLRLSYRDLLSTNRSAILGPRGSLDLQVMYLDEYRDRL
FLGSRDALYSLRLDQAWDPREVWLWPQPGQKVECVRKGDPLTECANFVRVLQPHNRTHLLACGTGAFQ
PICTFITVGHGRGEHVLRLDASSVENGRGRCPHEPSRPFASFVGGELYTGLTADFLGREAMIFRSGGPRP
ALRSDSDQSLLEHPRFVMAARIIPDNSDRDDDKVYFFFSETVSPDGGPGHVITISRVGRVCVNDAGGQVRL
VNKWSTFLKARLVCSVPGPGAETHFDQLEDVFLWPKAGKSLEYALFSTVSAVFQGFVAVCYHMVDIW
EVFNGPF AHRDGPQHGWGYPYGGKVPFPRPGVCP SKMTAQPRPF GSTKDY PDEVLQFVRDHPLMFQVPRP
RRGRPVLKTHLAQRLRQIVVDRVEAEDGTVDVIFLGTDSGSVLKVI ALQGGGLTEPEEVVLEELQVFKV
PTPITEMEISVKRQTLVYGSPLGVARLQLHQECETYGSACAECLARDPYCAWDGTACARYRPSSGKRRFR
RQDIRHGNAVQCLGQGSQNKAAASGLMTRVFGTEHNSTFLECLPKSPQAAVRWFLQRPDGKGTQVKTQ
ERVVQTAQGLLFRRLSRHDAGNYTCTTLEHGF SQT VVRF ALEVI AAVQLDSLFLRESRLEEPSAWGLAS
ASPKTWYKDILQLTGFANLPRVDEYCVWCRGVGERSGSGFRGKQAKGKSWAGLELGKMKSRVLAEH
NRTPREVEAT
```

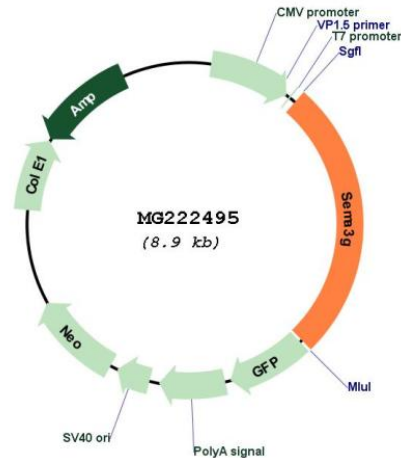
TRTRPLE - GFP Tag - V

Restriction Sites: SgfI-MluI

Cloning Scheme:

Cloning sites used for ORF Shuttling:



Plasmid Map:


ACCN: NM_001025379

ORF Size: 2340 bp

OTI Disclaimer: The molecular sequence of this clone aligns with the gene accession number as a point of reference only. However, individual transcript sequences of the same gene can differ through naturally occurring variations (e.g. polymorphisms), each with its own valid existence. This clone is substantially in agreement with the reference, but a complete review of all prevailing variants is recommended prior to use. [More info](#)

OTI Annotation: This clone was engineered to express the complete ORF with an expression tag. Expression varies depending on the nature of the gene.

Components: The ORF clone is ion-exchange column purified and shipped in a 2D barcoded Matrix tube containing 10ug of transfection-ready, dried plasmid DNA (reconstitute with 100 ul of water).

Reconstitution Method:

1. Centrifuge at 5,000xg for 5min.
2. Carefully open the tube and add 100ul of sterile water to dissolve the DNA.
3. Close the tube and incubate for 10 minutes at room temperature.
4. Briefly vortex the tube and then do a quick spin (less than 5000xg) to concentrate the liquid at the bottom.
5. Store the suspended plasmid at -20°C. The DNA is stable for at least one year from date of shipping when stored at -20°C.

RefSeq: [NM_001025379.1](#), [NP_001020550.1](#)

RefSeq Size: 3686 bp

RefSeq ORF: 2343 bp

Locus ID: 218877

UniProt ID: [Q4LFA9](#)

Cytogenetics: 14 B

Gene Summary: Has chemorepulsive activities for sympathetic axons. Ligand of NRP2.[UniProtKB/Swiss-Prot Function]