

Product datasheet for **MG222490**

Ubash3a (NM_177823) Mouse Tagged ORF Clone

Product data:

Product Type:	Expression Plasmids
Product Name:	Ubash3a (NM_177823) Mouse Tagged ORF Clone
Tag:	TurboGFP
Symbol:	Ubash3a
Synonyms:	5830413C03Rik; C330001M22; Sts-2; TULA; TULA-1
Mammalian Cell Selection:	Neomycin
Vector:	pCMV6-AC-GFP (PS100010)
E. coli Selection:	Ampicillin (100 ug/mL)



[View online »](#)

ORF Nucleotide Sequence:

>MG222490 representing NM_177823
 Red=Cloning site Blue=ORF Green=Tags(s)

TTTTGTAATACGACTCACTATAGGGCGGCCGGGAATTCGTCGACTGGATCCGGTACCGAGGAGATCTGCC
 GCC**GCGATCGCC**

ATGGCTGCGGGGAGACACAGCTCTATGCCAAGGTCTCCAACAAGCTCAAGGGCCGAGCACCCCTCAC
 TCCTGGATCCCTCCTGGCCATGGGCTTCCCCACACATACCGCGCTCAAAGCACTAGCGCCACAGGGAG
 GAAGACAGCCGAGGCGGAGCAGACTGGCTGCATGGTCACTGCAATGACCCTTCTCTGGATGACCTATC
 CCTCAGGAGTATGCTCTTCTCTGCCCCACGGGCCCTTGTGGAAAACTCCAAGAGTTCTGGAGAG
 AGAGCAGACGGCAGTGTGCAAAGAACAGAGCACATGAGGTCTTCCCTCACGTGACACTCTGTGACTTTT
 CACGTGTGAAGACCAGAAGTGGAGTGTGTATGAGGCTCTGAGACGTGACGGGACAGGATCTGGGC
 TCCTTCCCCACCCTGGTTCTCTGTTCTCATTCTCCATCAGTACCTCGGCTTCTTCATCAACGACA
 GCCCGCTGACGCCATCCGGGAATTCGCATGGCGTTTCCACAGAGGGCGCAGTCTGGCAGACTGTAC
 CATCAAGCCCTGCACCAAGCAGTGCACCTGACCTTGGCCATAAGTTCTACCCTCACCATAAAGGACC
 CTGGAGCAGCTGGCCAAAGCCATCCAGCCAGCCACTCCTGCCAATGGACAGCTGCCTGTACTCCCGAG
 ACATGCGTTTTGTGCACTACCAGACCCTGAAGGCGCTGTTCCAGTACAAACCCAGAATGCAGATGAGCT
 AATGCTCAGTGTGGTACTACATCTTCGTGGACCCCACTCAGCAAGAAGAGGCCAGCGAGGGCTGGGC
 ATTGGGATCTCACATCGGACTGGCTGCCGGGGCTTCTTCCAGAGAACTACACGGAGCGAGCCAATGAGG
 CTGACACCTGGGTTAAGCACAGGACGTATACATCAATCTAGCCATGGACCTGAACCTAGGAAGGATTT
 TGAAGCCAGTTGACGGGAAATGGGAACCCACACTCCGTCAATGTCAAAGAGTGTAGCAGCATAAA
 GCTTTGCAGGCTACCATCTCGAGGAGAGCATTCTGGTCGTACGTACATGGCGAGAGAGTGGACCAGTCT
 TTGGGAAGTCTTGGTACAGCAGTGTACTACTGCTGATGAAAACTACAGGCCAGACCTGAACCTCCC
 CCGCAGCCTGCCAAGGAGGAGCAACGGCATCAAAGACTTTGAAAACGATCCACCGCTATCATCCTGTGGA
 ATTTTCCAGGCCAGACTTCCCGGAGAAGCCCTGCTGGACAGCGCGTCAGAGTACCAGCGGCTTCTCGCT
 CTCAGCCCTGCGCTGCGTGCAGACAGCCAAGCACATCCTAGAAGAACTCAAAGTGGAGAAGAAGCTGAA
 GATAAGAGTTGAGCCTGGAATCTTCGAGTGGATGAAGTGGGAAGCCAGCAAGGCCACACTGACCTTCTTG
 ACCTTGGAGGAGCTGAAAGAAGCAAACCTCAATGTTGACCTTGATTATAGGCCAGATTGCCCGCTGCT
 CCCTCATGCCAGCTGAGAGCTATGACCAGTACGTGGAGAGATGTGCCGTGAGCATGGGGCAGATCATCAA
 CACATGCCACAGGACATGGGCATTACACTCATCGTGAGCCACAGCTCAGCGCTCGACTCCTGCACAAGG
 CCACTCCTCGGGCTCCCACCCAGAGAATGTGGGATTTGCCCAACTGGTAAGAAAGATTCCATCTCTGG
 GCATGTGCTTCTGTGAGGAAAACAGAGAGGACGAAAGTGGGACCTGGTGAATCCGCCAGTAAAGAGCT
 GACACATGGGGCCAACTCGGTCTTAACTGGAGAACTGGATCTCAAGCAAC

ACGCGTACGCGGCCGCTCGAG – GFP Tag – GTTTAA

Protein Sequence:

>MG222490 representing NM_177823
 Red=Cloning site Green=Tags(s)

MAAGETQLYAKVSNKLGKGRSTPSLLDPLLAMGFPTHALKALAATGRKTAEEAADWLHGHCNDPSLDDPI
 PQEYALFLCPTGPLELKLQEFWRESRRQCAKNRAHEVFPHTLDCDFFTCEDQKVECLYEALRRAGDRILG
 SFPTLVPLVLHSSISYLGFINDSPADAIREFAMAFATEAAVLADCTIKPCTKQLHLTLAHKFYPHHQRT
 LEQLAKAIQPSHSCQWTAALYSRDMRFVHYQTLKALFQYKQNADEMLSAGDYIFVDPTQEEASEGWA
 IGISHRTGCRGFLPENYTERANEADTWVHKRITYFNLAMDLNSRKDFEASCRNGEPHTPSMSKSVSSIQ
 ALQATISRRGILVVRHGERVDQVFGKSWLQCTTADGKYRPNLNFPRSLPRRSNGIKDFENDPPLSSCG
 IFQARLAGEALLDSGVRVTAVFASPALRCVQTAKHILEELKLEKLLKIRVEPGIFEWKWEASKATLTFL
 TLEELKEANFNVDLDYRPALPRCSLMPAESYDQYVERCAVSMGQIINTCPQDMGITLIVSHSSALDSCTR
 PLLGLPPREGDFAQLVRKIPSLGMCFCENREDGKWDLVNPPVKTLTHGANSVFNWRNWISSN

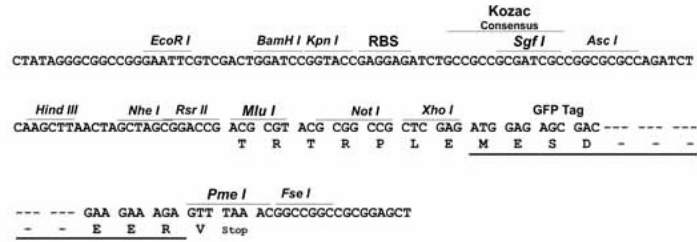
TRTRPLE – GFP Tag – V

Restriction Sites:

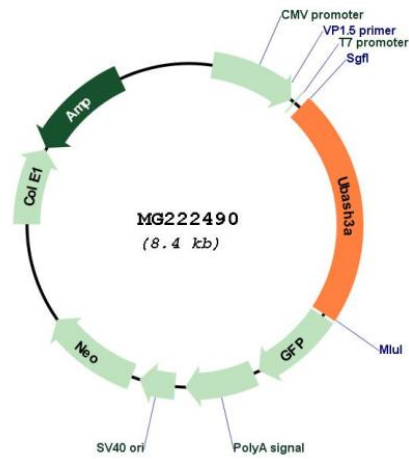
SgfI-MluI

Cloning Scheme:

Cloning sites used for ORF Shutting:



Plasmid Map:



ACCN: NM_177823
 ORF Size: 1872 bp

OTI Disclaimer:	The molecular sequence of this clone aligns with the gene accession number as a point of reference only. However, individual transcript sequences of the same gene can differ through naturally occurring variations (e.g. polymorphisms), each with its own valid existence. This clone is substantially in agreement with the reference, but a complete review of all prevailing variants is recommended prior to use. More info
OTI Annotation:	This clone was engineered to express the complete ORF with an expression tag. Expression varies depending on the nature of the gene.
Components:	The ORF clone is ion-exchange column purified and shipped in a 2D barcoded Matrix tube containing 10ug of transfection-ready, dried plasmid DNA (reconstitute with 100 ul of water).
Reconstitution Method:	<ol style="list-style-type: none"> 1. Centrifuge at 5,000xg for 5min. 2. Carefully open the tube and add 100ul of sterile water to dissolve the DNA. 3. Close the tube and incubate for 10 minutes at room temperature. 4. Briefly vortex the tube and then do a quick spin (less than 5000xg) to concentrate the liquid at the bottom. 5. Store the suspended plasmid at -20°C. The DNA is stable for at least one year from date of shipping when stored at -20°C.
RefSeq:	NM_177823.4 , NP_808491.2
RefSeq Size:	2953 bp
RefSeq ORF:	1875 bp
Locus ID:	328795
UniProt ID:	Q3V3E1
Cytogenetics:	17 A3.3- B1
Gene Summary:	Interferes with CBL-mediated down-regulation and degradation of receptor-type tyrosine kinases. Promotes accumulation of activated target receptors, such as T-cell receptors, EGFR and PDGFRB, on the cell surface. May inhibit dynamin-dependent endocytic pathways by functionally sequestering dynamin via its SH3 domain (By similarity). Exhibits negligible protein tyrosine phosphatase activity at neutral pH. May act as a dominant-negative regulator of UBASH3B-dependent dephosphorylation.[UniProtKB/Swiss-Prot Function]