

Product datasheet for **MG222467**

Tmem232 (NM_001008973) Mouse Tagged ORF Clone

Product data:

Product Type:	Expression Plasmids
Product Name:	Tmem232 (NM_001008973) Mouse Tagged ORF Clone
Tag:	TurboGFP
Symbol:	Tmem232
Synonyms:	E130009J12Rik; Gm940; Tes13-L; Tes13-S
Mammalian Cell Selection:	Neomycin
Vector:	pCMV6-AC-GFP (PS100010)
E. coli Selection:	Ampicillin (100 ug/mL)



[View online »](#)

ORF Nucleotide
Sequence:

>MG222467 representing NM_001008973
Red=Cloning site Blue=ORF Green=Tags(s)

TTTTGTAATACGACTCACTATAGGGCGGCCGGGAATTCGTCGACTGGATCCGGTACCGAGGAGATCTGCC
GCCCGGATCGCC

ATGAAAGCTTATAAGCCACCTGTGGTCAATAAGTTGGAGTAATATCTTCCACTTATCATGAAGAACTCC
TGAAATCTATTTTGAAGTTCAAACAGAAAGAGTCAAAAACCAAAGCCATCATTTTCAATTTCCAA
AGAATTCATATTGAGATTCAACACACAGATAATCCAGCAGAGGAGGAAGAACTGTTGGAACAAGCCAGG
AGACTCATCGTCAGGTCTAAGAGGAAGTTGGGCCTCAAGACACTGGGCTCTGGGAAGCATGTGCATCTTC
CGACCGCATGGGCTGAGGTCACTATCTGGCTCAGTGCAAAGGGGAGATCCAAGATGAAGCTTTAAATAT
GCTCCACGCCCTTGGACCATGTCTCCTTTGATCAGCATCAGCTTCTGCCCTGTTTTTCTCGCGGAA
TCCGTTTTATATCGACTCTGTTGCGATGCATTCATGAAGGGATTTTATATTTCAGTTGAGATAAACTGG
TGAAGATTGGCTATTTGATCTTCTACGGCTTTTGTATTCTTCTGCATGGTCACTTAGAAAGCTTTAA
ACAACATTTGCTTAGGCTGCAGCCATATTTATACGCACCTCATTCTCGAAACCGTCTACTACAAGTAT
CCGAACATCATCTCCAAGTGCAGTTCATCCTGAAAACATCGGAAATTATCTGTAAAAGAGAGCTTCATT
CTGAACCATTCGTGGAAGCCCAGATGAAACTGAGGATCCATATTCTGACCTGAATCATTTCGACGTGAA
TAAGAGGGGCTACGAAGTCAACCACCTGCTCTGGCACAGTGTGGCCGCTGGTCTCGTTCAGAACAAT
CGTCTCAGCTCACCGAAGTGTGGAACACCTCCTCTTACAAAACGCAGCTTCAGACGAAATGCTGGT
TGGATTACGCCCTGGCTTTGATGGTCTGGGGAAAGCTGCTAAGCTGGACATGGCCTGCTGAAAACACT
GATGGACCTAGTGACAGATTTCTTGAGAACATCTGTCTGCTCAGAACCAGGAAGAGAAGTATAATATA
TATGATACTTCTGGGCTCAGAGATTGTATTACATATAACAATTATTGCAGAAGTCTGTCTGTATG
CAGCTACCTCTGACCTGAGGAAAACAGCTTTGATTGGTTCTGTGCCTGTAAAAGTCCGCAGCAAGGTAT
TTCCCTCACAGACAAGTCTGAAGAGCTGCCAGAGTTGGATGGCGCAAGCATTTTAACTCTTCTGAAGTAT
TTCTCTCCAGAATCTCTGATAACTGTGAGAAGGTGATCTGGATTGGATACTATGGCATAGTGTATAACC
TGGTGAAGATGTCATGGGAACCTCAGGGTGAAGGATCAGGATGGACTTAGAAACATGATATGGCAAAC
ACTGCAAAGATAAAGGATTATGAGCAAGACCCACGGATCCGATGTGCATTAGTTATAGCCAGGCCGAA
TTAAATGGCCATCTGACCCTTCTGCACAAAGGCCACACCAAACCTCAGGAGAAGAAGTTTTCTCCAAGT
ACATCGGGTGGAGAATCGCTACTACTCTCCAGACTCTTTTCCCTCTCTCGATGTTGCCCTCCAAA
GACGCCAGTGAAGTGGACCTGCCAAGAAAACACACCATCAGAGAACGCCAGCCTGCAAAAAGAGAGTT
CTGCGCTTATCTTGAAGGATCATTCTTCTGTGGTAGAAGTTCCATGACTCCGTATCCAATTTCTTCA
CCAAGGCAGATAAGAAATTGGAAGAAATCATTGATCATCATTGGCAGAAAGATATGGAGGCCGAAAGCG
AGAAGAGGAAGCATATAAGGCCAAAATCAGAAGGACAAGGAGGAAAAGGAGAAGATTCATTTTCAAGAA
ATTATGAAGCAAAGAGAACGGAAACTGAACAAACAAACCAACCCATGAAATAATTCTGTGAGAAAAG
AAAGTGGCTCAGAAAAGAAATGTGGGTTCTTCGAGCTGAAACCCAGCACCACCAATGCTAAG

ACGCGTACGCGGCCGCTCGAG - GFP Tag - GTTTAA

Protein Sequence: >MG222467 representing NM_001008973
 Red=Cloning site Green=Tags(s)

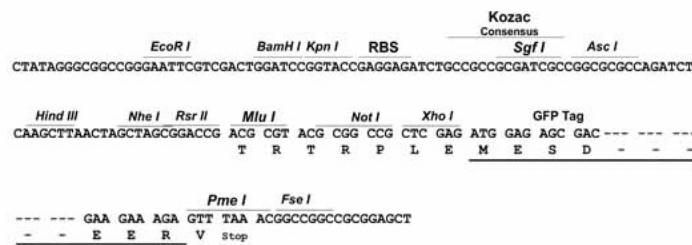
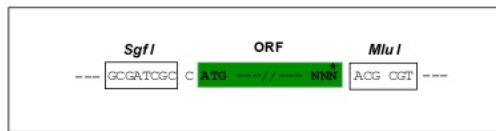
MKAYKPPVVKFGVISSTYHEELLKSIFESSNRRKSQKPKPSFSISKEFILRFNHTDNPAAAAELLEQAR
 RLIVRSRKRKLGKTLGSGKHVHLPTAWAEVIYLAQCKGEIQDEALNMLHASLDHVSFDHDQLPALFFLAE
 SVLYRLCCDAFMKGYLYSVEIKLVKIGYLIIFLRLVFFFLHGHLESFKQHLLRLQPYLYALHFSEPSYYKY
 PNIIISNVQFILKTSSEIICKRELHSEPFVESPDETEDPYSDLNHLQLNKRGYEVNHLWHSVAWSCVQNN
 RPQLTEVLEHLLFYKTQLQTKCWLDLALMVLGEAAKLDMACLKTMDLVTDLFLENILSAQNQEENYNI
 YDTSWASEIVFTYTTIIAEVCLYAATSDLRKTALIGFCACKSPQQGISLTDKSEELPELDGASILTLLKY
 FSSRISDNCEKVIWIGYGIYVNLVKMSWELQGEQDQDGLRNMIWQTLQKIKDYEQDPRIRCALVIAQAE
 LNGPSPDFCTKATPNSGEEVFSKYIGWRIATTLRSLFFPSLDVAPPKTPVEVDLPRKHTIRERQPAKRV
 LRFILKDHSSVVEVSMTPYPNFFTKADKLEEIIDHHWQKDMARKREEEAYKAQNQKDKKEEKEIHFQE
 IMKQRERLKNQTKPYEIIILSEKESGSEKKCGFFELKPSTAPNAK

TRTRPLE - GFP Tag - V

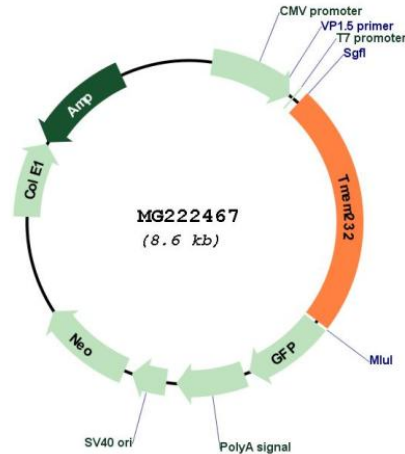
Restriction Sites: SgfI-MluI

Cloning Scheme:

Cloning sites used for ORF Shuttling:



Plasmid Map:



ACCN: NM_001008973

ORF Size: 2025 bp

OTI Disclaimer: The molecular sequence of this clone aligns with the gene accession number as a point of reference only. However, individual transcript sequences of the same gene can differ through naturally occurring variations (e.g. polymorphisms), each with its own valid existence. This clone is substantially in agreement with the reference, but a complete review of all prevailing variants is recommended prior to use. [More info](#)

OTI Annotation: This clone was engineered to express the complete ORF with an expression tag. Expression varies depending on the nature of the gene.

Components: The ORF clone is ion-exchange column purified and shipped in a 2D barcoded Matrix tube containing 10ug of transfection-ready, dried plasmid DNA (reconstitute with 100 ul of water).

Reconstitution Method:

1. Centrifuge at 5,000xg for 5min.
2. Carefully open the tube and add 100ul of sterile water to dissolve the DNA.
3. Close the tube and incubate for 10 minutes at room temperature.
4. Briefly vortex the tube and then do a quick spin (less than 5000xg) to concentrate the liquid at the bottom.
5. Store the suspended plasmid at -20°C. The DNA is stable for at least one year from date of shipping when stored at -20°C.

RefSeq: [NM_001008973.2](#), [NP_001008973.2](#)

RefSeq Size: 2608 bp
RefSeq ORF: 2028 bp
Locus ID: 381107
UniProt ID: [Q5K6N0](#)
Cytogenetics: 17 E1.1