

Product datasheet for **MG222439**

Mid2 (NM_011845) Mouse Tagged ORF Clone

Product data:

Product Type:	Expression Plasmids
Product Name:	Mid2 (NM_011845) Mouse Tagged ORF Clone
Tag:	TurboGFP
Symbol:	Mid2
Synonyms:	FXY2; Trim1
Mammalian Cell Selection:	Neomycin
Vector:	pCMV6-AC-GFP (PS100010)
E. coli Selection:	Ampicillin (100 ug/mL)



[View online »](#)

ORF Nucleotide
Sequence:

>MG222439 representing NM_011845
Red=Cloning site Blue=ORF Green=Tags(s)

TTTTGTAATACGACTCACTATAGGGCGGCCGGGAATTCGTCGACTGGATCCGGTACCGAGGAGATCTGCC
GCC**CGGATCGCC**

ATGGAACACTGGAGTCAGAATTGACCTGTCCAATCTGCCTCGAGTTGTTTGAAGACCCCTTCTGCTTC
CTTGCTCACAGCCTATGTTTTAGCTGTGCCACCGCATCTTGGTCTCAAGCTGCAGCTCTGGTGAATC
CATTGAACCCATTACTGCTTCCAGTGTCTACATGCAGGTATGTTATCTCGCTGAATCACCGGGGCTG
GATGGCCTCAAGAGGAATGTGACCCTGCAGAACATTATTGATCGCTTCCAGAAGGCTTCAGTCAGTGGC
CCAATTCTCCAAGTGAGAGCCGCCGGGAGAGGACTTACAGGCCTAGCTCCGCCATGTCGAGTGAGAGAAT
TGCATGTCAATTCTGTGAGCAGGACCCTCCGAGAGATGCTGTAAGACGTGCATCACCTGTGAGGTCTCC
TACTGTGACCGTTGCCTTCGGGCCACACACCCCAACAAGAAACCTTCCACAGCCATCGCTGGTGAAC
CAGTTTCAGACACACATCTCGAGGGATTACCTGCCTGGACCACGAGAATGAGAAGTGAACATGTACTG
TGTATCTGATGATCAATTGATCTGTGCCTTATGCAAACCTGGTGGTTCGTCACCGAGACCATCAGGTCGCT
TCTCTGAATGATCGATTTGAGAACTAAAGCAAACCTCTCGAGATGAACCTACCAACCTGGTTAAGCGCA
ACAGTGAAGTAAAAATCAAATGGCCAACTAATACAGATCTGCCAGCAAGTTGAGGTGAATACTGCTAT
GCATGAGGCAAACTTATGGAAGAATGTGACGAGTTGGTAGAGATCATCCAGCAGAGGAAACAAATGATT
GCTGTCAAATCAAAGAGACAAAGGTTATGAACTGAGAAAGTTGGCACAGCAGGTTGCTAATTGCCGCC
AGTGTCTTGAGCGGTCAACAGTCTCATCAACCAAGCTGAGCATATCCTAAAGGAAAAAGACCAAGCAGC
GTTTCTGCAGTCTGCAAAAAACATTGCCGAGAGGGTCGCTATGGCAACTGCATCTTCGCAAGTTCTGATT
CCAGACATCAATTTTAAATGATGCCTTTGAAAACCTTGTCTTAGATTTTCTAGAGAAAAGAACTATTGG
AGGGGCTAGACTATTTAACAGCTCCAAACCCACCATCTATCCGAGAAGAGCTCTGTACTGCTTCCCATGA
CACCATTACAGTCCACTGGATCTCAGACGACGAATTCAGCATCAGCTCCTATGAGCTTCAGTACACCATA
TTCAGTGGCCAGGCTAATTCATCAGCCTGTACAATTCAGTGGATAGCTGGATGATTGTGCCCAACATTA
AGCAGAACCATTACACAGTTCATGGACTCCAGAGTGGGACACGCTACATCTTTATCGTGAAGCCATAAA
TCAAGCAGGCAGCCGGAACAGCGAACCCACCAGACTAAAAACGAACAGCCAACCATTTAACTAGATCCC
AAAATGACTCACAAGAAGTTGAAGATCTCCAATGATGGATTGCAGATGGAGAAGGATGAGAGCTCTCTGA
AGAAGAGCCACACTCCGGAGAGATTTAGTGGCACAGGGTGTATGGGGCAGCAGGAAATATATTCATCGA
CAGTGGCTGCCACTACTGGGAGGTGGTCATGGGTTCTTCAACATGGTATGCTATTGGTATTGCCTACAA
TCAGCTCAAAGAATGAGTGGATTGGCAAGAATGCCTCTCCTGGTCTTCTCTCGATGCAACAGTAACT
TCGTGGTTCGGCACAACAACAAGGAAATGCTGGTGGATGTGCCCCACAGTTGAAGCGTCTAGGTGTCT
TCTGGATTATGACAACAACATGCTGTCTTTCTATGACCCAGCTAACTCTCTCCATCTTCATACTTTTGT
GTTACCTTCATTCTCCAGTTTGTCCAACATTCACAATCTGGAACAAATCCCTAATGATTCTTTCTGGCT
TGCTGCCCTGATTTTATTGATTATCCTGAGCGGCAGGAATGCAACTGCAGGCCCAAGAATCCCTTA
TGTGTCAGGGATGAAAGCTTGCCAT

ACGCGTACGCGGCCGCTCGAG - GFP Tag - GTTTAA

Protein Sequence: >MG222439 representing NM_011845
 Red=Cloning site Green=Tags(s)

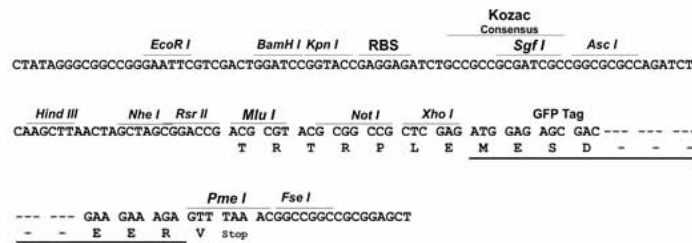
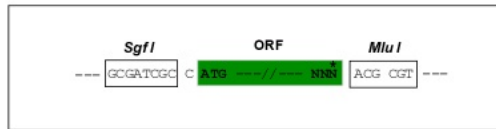
METLESELTCPICLELFEDPLLLPCAHS LCFSCAHRILVSSCSSGESIEPITAFQCPTCRYVISLNHRGL
 DGLKRNVTLQNIIDRFQKASVSGPNPSESRRTYRPSAMSSERACQFCEQDPPRDVAVKTCITCEVS
 YCDRCLRATHPNKKPFTSHRLVEPVSDTHLRGITCLDHENEKVNMYCVSDDQLICALCKLVGRHRDHQVA
 SLNDRFEK LKQ TLEMNL TNLVKRNSELENQMAKLIQICQQVEVNTAMHEAKLMEECDELVEIIQQRKQMI
 AVKIKETKVMKLRKLAQQVANCRCLESTVLINQAHEILKENDQARFLQSAKNI AERVAMATASSQVLI
 PDINFNDAFENFALDFSREKLLLEGLDYLTAPNPPSIREELCTASHDTITVHWISDDEFSSISSELYQTI
 FTGQANFISLYNSVDSWMIVPNIKQNHYTVHGLQSGTRYIFIVKAINQAGSRNSEPTRLKTN SQPFKLDP
 KMTHKKL KISNDGLQMEKDESSLKKSHTPERFSGTGCGYGAAGNIFIDSGCHYWEVVMGSSTWYAIGIAYK
 SAPKNEWIGKNASSWVFSRCNSNFVVRHNNKEMLVDPVPPQLKRLGVLLDYDNM LSFYDPANSLHLHTFD
 VTFILPVCPTFTIWNKSLMILSGLPAPDFIDYPERQECNCRPQESPYVSGMKACH

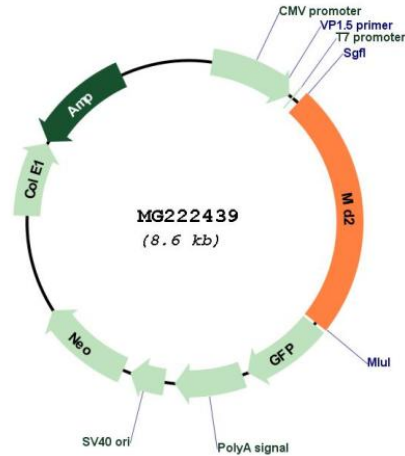
TRTRPLE - GFP Tag - V

Restriction Sites: SgfI-MluI

Cloning Scheme:

Cloning sites used for ORF Shuttling:



Plasmid Map:


ACCN: NM_011845

ORF Size: 2055 bp

OTI Disclaimer: The molecular sequence of this clone aligns with the gene accession number as a point of reference only. However, individual transcript sequences of the same gene can differ through naturally occurring variations (e.g. polymorphisms), each with its own valid existence. This clone is substantially in agreement with the reference, but a complete review of all prevailing variants is recommended prior to use. [More info](#)

OTI Annotation: This clone was engineered to express the complete ORF with an expression tag. Expression varies depending on the nature of the gene.

Components: The ORF clone is ion-exchange column purified and shipped in a 2D barcoded Matrix tube containing 10ug of transfection-ready, dried plasmid DNA (reconstitute with 100 ul of water).

Reconstitution Method:

1. Centrifuge at 5,000xg for 5min.
2. Carefully open the tube and add 100ul of sterile water to dissolve the DNA.
3. Close the tube and incubate for 10 minutes at room temperature.
4. Briefly vortex the tube and then do a quick spin (less than 5000xg) to concentrate the liquid at the bottom.
5. Store the suspended plasmid at -20°C. The DNA is stable for at least one year from date of shipping when stored at -20°C.

RefSeq: [NM_011845.3](#)

RefSeq Size: 5916 bp

RefSeq ORF: 2058 bp
Locus ID: 23947
UniProt ID: [Q9QUS6](#)
Cytogenetics: X 61.35 cM
Gene Summary: May play a role in microtubule stabilization.[UniProtKB/Swiss-Prot Function]