

## Product datasheet for **MG222405**

### Lancl1 (NM\_021295) Mouse Tagged ORF Clone

#### Product data:

Product Type:	Expression Plasmids
Product Name:	Lancl1 (NM_021295) Mouse Tagged ORF Clone
Tag:	TurboGFP
Symbol:	Lancl1
Synonyms:	AW124738; Gpr69; Gpr69a; p40
Mammalian Cell Selection:	Neomycin
Vector:	pCMV6-AC-GFP (PS100010)
E. coli Selection:	Ampicillin (100 ug/mL)
ORF Nucleotide Sequence:	>MG222405 representing NM_021295 Red=Cloning site Blue=ORF Green=Tags(s)

TTTTGTAATACGACTCACTATAGGGCGCCGGGAATTCGTCGACTGGATCCGGTACCGAGGAGATCTGCC  
GCC**CGATCGCC**

ATGGCTCAGAGGGCCTTTCCGAATCCTTATGCCGATTATAACAAGTCGCTGGCCGAAAACACTTTGATT  
CTACTGGGAGGCTGACTCCTGAGTTCTCACATCGCTTGACCAATAAGATCCGAGAGCTCCTTCAGCAAAT  
GGAGAGAGGCCTAAAGTCTGCAGACCCTCGGGATGGCACTGGGTACACTGGCTGGCAGGCATCGCTGTG  
CTTTACCTCCACCTCCACAATGTGTTGGGACCCAGCCTATCTACAGATGGCGCACAGCTATGTAAGC  
AAAGCCTCAACTGTCTGAGCAGGCGTTCATCACCTTCCTGTGTGGCGATGCGGGCCCCCTGGCTGTGGC  
TGCTGTGCTGTACCACAAGATGAACAGTGAGAAGCAGGCCGAGGAGTGCATCACACGGCTCATTCACCTA  
AATAAGATTGATCCCCACGTACCAAATGAAATGCTCTATGGCCGCATAGGCTACATCTTTGCTCTGCTTT  
TTGTCAATAAGAACTTTGGAGAGGAGAAGATTCCTCAGAGCCATATTCAGCAGATTTGTGAAAACATCTT  
AACCTCTGGGAAAACCTATCTAGAAAGAGAAAACCTGGCGGCAAAGTCTCCACTGATGTATGAGTGGTAC  
CAGGAATATTACGTGGGGCTGCTCATGGCTTGGCAGGCATTTATTACTACCTGATGCAGCCAGCCTTC  
AGGTGAACCAAGGAAAGTTGCATAGTTTGGTGAAGCCAGTGTAGACTTTGTCTGCCGGCTGAAGTTTCC  
TTCCGGCAATTACCCTCCATGTTTGGATGATACCAGAGACCTGCTTGCCATTGGTGCCACGGTGCTCCT  
GGGTCATCTATGCTCATCCAAGCATACAAGTGTTCAAAGAAGAGCGTTACCTGTGTGATGCCCAGC  
AGTGTGCTGACGTGATCTGGCAGTACGGGCTACTGAAGAAGGGCTACGGGCTGTGCCATGGTGTGCAAG  
GAATGCCTACGCTTTCTGGCACTCTAACCTCACACAGGATCTGAAGTATCTGTACAGGGCCTGCAAG  
TTTGCTGAGTGGTCTTAGACTACGGGAGCACGGATGCAGGACAGCGGACACCCCTTCTCCCTTTTG  
AAGGGATGGCTGGAACAATATATTTCTGGCTGACCTGTTAGTCCCCACAAGGCCAAGTTCCTGCATT  
TGAATC

**ACGCGT**ACGCGGCCGCTCGAG - GFP Tag - GTTTAA



[View online »](#)

**Protein Sequence:** >MG222405 representing NM\_021295  
 Red=Cloning site Green=Tags(s)

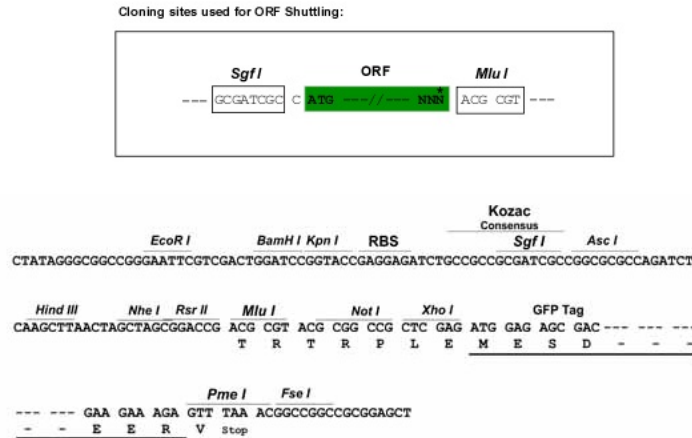
MAQRAFPNPYADYNKSLAENYFDSTGRLTPEFSHRLTNKIRELLQQMERGLKSADPRDGTGYTGWAGIAV  
 LYLHLHNVFGDPAYLQMAHSYVKQSLNCLSRRSITFLCGDAGPLAVAAYLYHKMNSEKQAEECITRLIHL  
 NKIDPHVPNEMLYGRIGYIFALLFVNKNFGEEKIPQSHIQQICENILTSGENLSRKRNLAAKSPLMYEWY  
 QEYYVGAHGLAGIYYLQPSLQVNOGKHLHSLVKPSVDFVCRLLKFPVSGNYPPCLDDTRDLLVHWCHGAP  
 GVIYMLIQAYKVFKEERYLCDAQQCADVIWQYGLLKKGYGLCHGAAGNAYAFLLALYNLTQDLKYLVRACK  
 FAEWCLDYGEHGCRATDTPFSLFEGMAGTIYFLADLLVPTKAKFPAPFEL

TRTRPLE - GFP Tag - V

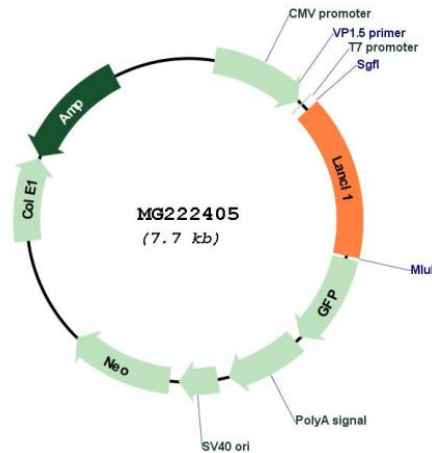
**Restriction Sites:**

SgfI-MluI

**Cloning Scheme:**



**Plasmid Map:**



**ACCN:**

NM\_021295

<b>ORF Size:</b>	1197 bp
<b>OTI Disclaimer:</b>	The molecular sequence of this clone aligns with the gene accession number as a point of reference only. However, individual transcript sequences of the same gene can differ through naturally occurring variations (e.g. polymorphisms), each with its own valid existence. This clone is substantially in agreement with the reference, but a complete review of all prevailing variants is recommended prior to use. <a href="#">More info</a>
<b>OTI Annotation:</b>	This clone was engineered to express the complete ORF with an expression tag. Expression varies depending on the nature of the gene.
<b>Components:</b>	The ORF clone is ion-exchange column purified and shipped in a 2D barcoded Matrix tube containing 10ug of transfection-ready, dried plasmid DNA (reconstitute with 100 ul of water).
<b>Reconstitution Method:</b>	<ol style="list-style-type: none"><li>1. Centrifuge at 5,000xg for 5min.</li><li>2. Carefully open the tube and add 100ul of sterile water to dissolve the DNA.</li><li>3. Close the tube and incubate for 10 minutes at room temperature.</li><li>4. Briefly vortex the tube and then do a quick spin (less than 5000xg) to concentrate the liquid at the bottom.</li><li>5. Store the suspended plasmid at -20°C. The DNA is stable for at least one year from date of shipping when stored at -20°C.</li></ol>
<b>RefSeq:</b>	<a href="#">NM_021295.3</a> , <a href="#">NP_067270.1</a>
<b>RefSeq Size:</b>	4277 bp
<b>RefSeq ORF:</b>	1200 bp
<b>Locus ID:</b>	14768
<b>UniProt ID:</b>	<a href="#">O89112</a>
<b>Cytogenetics:</b>	1 C3
<b>Gene Summary:</b>	Functions as glutathione transferase (PubMed:25158856). Catalyzes conjugation of the glutathione (GSH) to artificial substrates 1-chloro-2,4-dinitrobenzene (CDNB) and p-nitrophenyl acetate (PubMed:25158856). Mitigates neuronal oxidative stress during normal postnatal development and in response to oxidative stresses probably through GSH antioxidant defense mechanism (PubMed:25158856). May play a role in EPS8 signaling. Binds glutathione (By similarity).[UniProtKB/Swiss-Prot Function]