

## Product datasheet for **MG222394**

### Myh7b (NM\_001085378) Mouse Tagged ORF Clone

#### Product data:

Product Type:	Expression Plasmids
Product Name:	Myh7b (NM_001085378) Mouse Tagged ORF Clone
Tag:	TurboGFP
Symbol:	Myh7b
Synonyms:	Myh14
Mammalian Cell Selection:	Neomycin
Vector:	pCMV6-AC-GFP (PS100010)
E. coli Selection:	Ampicillin (100 ug/mL)
ORF Nucleotide Sequence:	>MG222394 representing NM_001085378 Red=Cloning site Blue=ORF Green=Tags(s)

TTTTGTAATACGACTCACTATAGGGCGGCCGGAATTCGTCGACTGGATCCGGTACCGAGGAGATCTGCC  
GCC**CGATCGCC**

ATGATGGATATGAGTGAACCTGGAGAATCAGCCTGCTACCTCCGCCAGGGCTACCAGGAAATGATGAAGG  
TGCACACTGTCCCATGGGATGGTAAGAAACGGGTCTGGGTGCCTGATGAGCAGGATGCCTATGTGGAGGC  
TGAGGTCAAGACTGAAGCTACTGGAGGCAAAGTCACTGTGGAGACCAAAGACCAGAAGGTGCTGACAGTG  
CGTGAAACGGAGATGCAACCCATGAACCCACCCGTTTCGACTTACTGGAGGACATGGCCATGATGACGC  
ACCTCAACGAGGCTGCAGTGTGCATAACCTGCGGCAGCGCTATGCTCGTGGATGATCTACACATACTC  
GGCCTCTTCTGTGTACCATTAAACCCATACAAATGGCTCCCGGTCTACACAGCTGCTGTGGTGGCTGCC  
TACAAGGGCAAGCGTCGCTCCGAGGCCACCTCATATATATGCAAGTGGCAGATAATGCCTACAACGACA  
TGCTCCGCAACCGAGAGAATCAGTCCATGCTGATCACCGGAGAGTCGGGGGCCGGTAAGACGGTTAACAC  
CAAGCGGGTCAATTCAGTACTTTGCCATCGTCGCTGCCCTGGGAGACGGGCCGGCAAGAAGGCACAATTT  
CTGGCGACAAAGACAGGGGGCACCTTGAGGATCAAATCATCGAGGCTAACCTGCCATGGAGGCTTTTG  
GCAACGCCAAGACTCTGAGGAACGACAACCTCTCCCGTTTGGCAAGTTCATCCGCATCCACTTTGGTCC  
CACTGGGAAGCTGGCCTCTGCGGACATTGATAGCTATCTCCTGGAGAAGTCGCGAGTGATCTTCCAGCTG  
CCCGGTGAGCGTGGTTACCATGTCTACTACCAGATCCTCTCAGGGAAGAAGCCGGAGCTGCAGGACATGC  
TGCTCCTGTCCATGAATCCCTACGACTACCACTTCTGCAGCCAGGGGTCACCACTGTGGACAACATGGA  
TGACGGCGAGGAACCTATCGCCACTGATCATGCAATGGATATCCTGGGCTTCAGTGTGGATGAGAAGTGT  
GCCTGCTATAAGATCGTGGGTGCTCCTGCACCTTTGGCAACATGAAGTCAAACAGAAGCAGAGAGAGG  
AACAGGCTGAGGCAGACGGCACTGAGAGTGCAGCAAGGCTGCCTACTTGTGGTGTGACGAGCGGGGA  
CCTCCTCAAAGGTCTCCTGCATCCCCGGGTTCTGTGGGAAATGAGTATGTTACCAAGGGCCAGAGTGTG  
GAGCAGGTGGTATTTGCCGTGGGGGCCCTGGCCAAGGCTACCTACGACCGGTTGTTCCGATGGCTGGTTT  
CTCGAATCAATCAGACCCTGGACACAAAGCTCCCTCGACAGTTCTTTATCGGGTCTGGACATCGCTGG  
TTTTGAGATTTTGGATTTAACAGCTTCGAGCAGCTGTGCATCAACTTACCAACGAGAAGCTGCAGCAG



[View online »](#)

TTCTTCAACCAGCACATGTTCTGTGCTGGAGCAGGAGGAGTACAAGCGGGAGGGCATCGACTGGGTCTTCA  
 TCGACTTCGGCCTTGACCTGCAGCCTGTATCGACCTCATCGAGAAGCCTCTGGGCATCCTGTCCATCCT  
 GGAGGAGGAGTGCATGTTCCCAAGGCTTCAGACGCAAGCTTCAGGGCCAAGCTCTATGACAATCATTCT  
 GGGAAAGTACCTAATTTCCAGCAGCCTCGCCAGACAAGAAACGCAAGTACCAGGCTCACTTCGAGGTGG  
 TCCACTACGACAGGCGTGGTTCCTTATAGCATCGTGGGCTGGTGGAGAAAAACAAGGATCCCCTCAATGA  
 GACGGTGGTCCCCATCTCCAAAAGTACAGAAATAGGCTCTTGGCCACCCTCTATGAGAACTATGCAGGT  
 TCTTGTCCACCGAGCCCCCAAGTCTGGGGTGAAGAGAAAGCGCAAGAAAGCAGCATATTCAGACCG  
 TGTCTCAGCTTCAACAAGGAGAACCCTCAACAAGCTCATGACCAACCTGCGGGCCACACAGCCCCATTCGT  
 CCGCTGTATCGTCCCAACGAGAACAAGACTCCAGGGGTGATGGATTCTTCTTGGTGTACACCAACTA  
 CGCTGCAACGGGGTCTTGGAGGGAATCCGGATCTGCCGCCAAGGGTTCACCAACAGACTGCTGTATGCTG  
 ACTTCAGGACGCGGTACCGAATCCTGAACCCAGTGCCATCCCAGACGACACCTTGTGGACAGCAGAAA  
 GGCCACAGAGAAGCTGCTGGGCTCCCTGGACATCGACCACACTCAGTATCAGTTTGGCCACACCAAGGTG  
 TTCTTCAAGGCTGGGCTTCTAGGCATCCTGGAGGAGCTGCGGGACCAGCGTCTGGCTAAGGTGTTGACAC  
 TGCTGCAGGCTCGAGCCGGGGCCCTCATGCGGCTGGAGTACCAGCGCATGCTAGGGGAAGGGATGC  
 CCTGTTACCATACAGTGAACATCCGGGCTTTAATGCCGTCAAGAAGTGGTCTGGATGAAGCTTTC  
 TTCAAGATGAAGCCACTGCTGCGCTCAGCACAGGCGGAGGAGGCTGGCGGCAGTGCAGGCGAGGCTGC  
 GGGGGCTGCGAGGGGCCCTGGCTACGGCTGAGGCTAAGCGGCAGGAGCTGGAGGAGACTCAAGTCAAGTGT  
 CACTCAGGAGAAGAACGACCTGGCCCTGCAGCTGCAGGCAGAGCAGGACAACCTCGCAGATGCAGAGGAG  
 CGCTGCCACTTGTGATCAAGTCCAAGGTGCAGCTGGAGGCGAAGGTGAAGGAGCTGAGCGAGCGGCTGG  
 AGGACGAGGAGGAAGTGAACGCGGACCTGGCCGCCCGCAGGCGCAAGCTGGAGGACGAGTGCACGGAGCT  
 CAAGAAAGACATCGATGACCTGGAGTGCAGCTGGCCAAGGCCGAGAAAGAGAAAACAAGCCACAGAGAAC  
 AAGGTGAAGAACCTGACAGAAGAGATGGCGGACTGGATGAAGCCGTGGTCCGCTGACTAAGGAGAAGA  
 AGGCAATGACAGGAGCTCACAGCAGGCTCTGGGTGACCTGCAGGCTGAGGAGGACCGTGTGAGCCACT  
 GGCCAAGGCCAAGATCCGGTGGAAACAGCAAGTGGAGGATCTGGAGTGTCCCTGGAGCAAGAGAAGAAG  
 CTGCGCATGGACACAGAACGCGCAAGGCCAAACTTGAAGGAGACTTGAAGCTGACGCAGGAGACGGTGA  
 CAGACACAACACAAGACAAGCAGCAGTTGGAGGAGAAGTTGAAGAAGAAGGATTCGGAGCTGAGTCAAGT  
 GAACCTGCGGGTGGAGGATGAGCAGCTCGTGGGGTGCAGCTGCAGAAGAAGATCAAGGAGCTGCAGGCT  
 AGGGCCGAGGAGCTGGAGGAGGAGCTGGAGGCGGAGCGAGCAGCCCGCCCGCTGGAAAAGCAGCGAG  
 CCGAGGCAGCGGGGAGCTGGAGGAGCTGAGCGAGAGGCTGGAGGAGGCTGGCGGAGCTTCCGCGGGCA  
 GCGTGAGGGTTGCCGAAGCGTGAAGCTGAGTTGGCCGGCTGCGGCGGAGCTGGAGGAGGAGTCTG  
 AGGCACGAGGCCACTGTGGCTGCCCTGCCCGCAAGCAGGCCGATAGCGTGCAGAGCTGAGCGAGCAGG  
 TGGACAGCTGCAGCGCATCCGGCAGAAACTGGAAAAGGAGAAGAGCGAGCTGCGCATGGAGGTGACGA  
 TCTGGGCGCCAGCGTGGAAACTCTGGCCCTGGCAAGGCCAGTGCAGGAAAAGCTGTGTGGACCTATGAG  
 GACCAGCTGAGCGAGGCCAAAATCAAAGTGGAGGAGCTGCAGCGACAGCTGGCCGACGCCAGCACCAGC  
 GGGGGCGGTTACAAACGGAGAATGGGGAGCTGGGCCGCTGCTGGAGGAGAAGGAGTCCATGATCAGCCA  
 GCTGAGCCGCGGGAAGACCTCAGCAGCGCAGAGTCTGGAGGAACCTCGGCGGAGCTGGAGGAAGAAAGC  
 AAGGCCAAGGGTGCCTGGCTCATGAGTGCAGGCCCTGCGGCACGACTGCGACCTCCTCCGAGAGCAGC  
 ACGAGGAAGAGTCTGAGGCTCAGGCTGAGCTGCAGCGGCTGCTGTCCAAGCCAACGCGGAGGTGGCCCA  
 GTGGCGGAGCAAGTATGAAGCAGATGCCATCCAAGGACGAGGAGCTGGAGGAGGCCAAGAAGAAGCTG  
 GCCCTGCGGCTGCAAGAGGCAGAAAGAGGCGTAGAGGCCGCAAAATGCCAAATGCTCCTACTGGAGAAGG  
 CCAAGCTGCGGCTGCAGACAGAGTCGGAGGATGTGACCTTGGAGCTGGAGCGGGCCACCTCGGCCCGCG  
 AGCCCTGGATAAGAAGCAGCGGCACTTGGAGCGGGCGCTGGAGGAGCGGAGGCGGAGGAGGAGATG  
 CAGCGGAACTCGAGGCGGCACAGAGGGAGGCTCGAGGCTTGGGGACAGAGCTCTTTCGACTGCGACATA  
 GCCACGAGGAAGCGCTTGAAGCTCTGGAGACACTCAAGCGGGAGAACAAGAATCTGCAGGAGGAGATCAG  
 TGACCTTACAGACCAGGTCAAGCTCAGCGGGAAGAGCATCCAGGAAGTGGAGAAGGCCAAGAAGGCGCTG  
 GAAGGGGAGAAGAGTGAAGCTGCAAGCTGCACTGGAGGAGGCTGAGGGGGCACTGGAGTTGGAAGAGACAA  
 AGACTTACGGATCCAGTTGGAGTTGTCCAGGTCAAGGCAGAGGTGGACCGGAAGCTGGCGGAGAAGGA  
 CGAGGAGTGTACTAACCTGAGGCCAACCACAGCGGGCTGTGGAATCCCTGCAGGCCTCCTGGATGCA  
 GAGACAAGGGCCCGCAATGAAGCACTGCGCCTCAAGAAGAAGATGGAGGGGGACCTCAACGACCTGGAGC  
 TACAGCTGGGCCACGCAACCCCGCAGGCCATGGAGGCACAGGCAGCCACGAGGCTGCTGCAGGCTCAACT  
 CAAGGAGGAACAAGCAGGGCGAGATGAGGAGCAGAGGCTGGTGGCGAGCTCCGTGAGCAGGGTCAAGCC  
 CTCGAGCGCAGGGCTGCACTGCTGGCGGCTGAGCTGGAAGAGTTCGGGCTGCCCTGGAACAGGGCGAGC

GCAGCCGGAGGCTGGCTGAGCAGGAGCTGCTGGAGGCCACCGAGCGCCTCAACCTACTGCATTTCGAGAA  
CACAGGCCTCTGAACCAGAAAAAGAGCTGGAGGTGGACTTGGCCCAGCTGAGTGGGAAAGTGGAGGAG  
GCTGCGCAGGAGAGGCGTGAAGCTGAGGAGAAGGCCAAAAAGGCCATCACTGATGCAGCCATGATGGCCG  
AGGAGCTGAAAAAGAACAGGACACGAGCGCACACCTGGAACGGATGAAGAAGACCCTGGAACAGACCGT  
GCGGGAGCTGCAGGCACGCCTTGAGGAAGCCGAGCAGGCCGCACTTCGGGGTGGGAAGAAGCAAGTGCAG  
AAGCTGGAGGCCAAGGTGCGGGAGCTGGAGGCCGAGCTGGATGCAGAGCAGAAAAAGCATGCCGAGGCC  
TCAAGGGGTGCGTAAACACGAGCGCCGGGTCAAGGAGCTCGTGTACCAGACTGAAGAGGACAGGAAGAA  
CCTGGCTCGCATGCAGGACCTGGTGGACAAGCTGCAGAGCAAGGTCAAGAGCTACAAGCGTCAGTTTGAG  
GAGGCGGAGCAGCAGGCCAGTACCAACCTGGCTAAGTACCGAAGGCCAGCAGCAGCTGGATGATGCCG  
AGGAACGGGCAGACATGGCAGAGACCCAGGCCAACAGCTGCGGGCAAGGTCCAGGGATGCCCTGGGCC  
CAAGCACAAAGGAG

ACGCGTACGCGGCCGCTCGAG – GFP Tag – GTTTAA

**Protein Sequence:**

>MG222394 representing NM\_001085378  
Red=Cloning site Green=Tags(s)

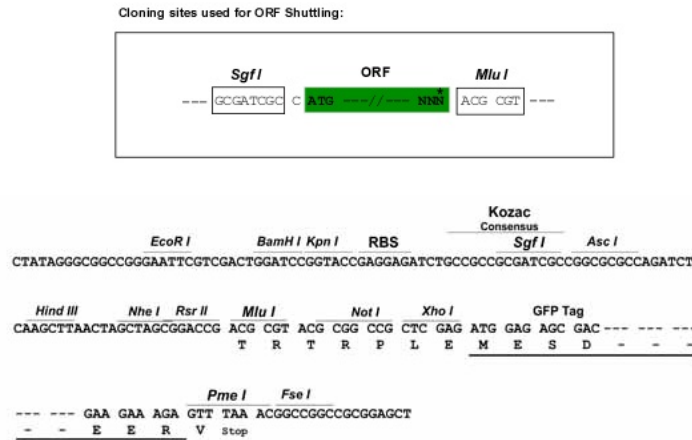
MMDMSELGESACYLRQGYQEMMKVHTVPWDGKKRVPWPDEQDAYVEAEVKTEATGGKVTVETKDQKVLTV  
RETEMQPMNPPFDLLEDMMTHLNEAAVLHNLRQRYARWMIYYSGLFCVTINPYKWPVYTAAVVAA  
YKGRKRRSEAPPHIYAVADNAYNDMLRNRENQSMITGESGAGKTVNTKRVIQYFAIVAALGDGPGKKAQF  
LATKTGGTLEDQIIEANPAMEAFGNAKTLRNDNSRFGKIRIHFHPTGKLASADISYLLEKSRVIFQL  
PGERGYHVVYQILSGKKPELQDMLLLSMNPYDYHFCSQGVTTVDNMDGEEELIATDHAMDILGFSVDEKC  
ACYKIVGALLHFGNMFKQKQREEQAEADGTESADKAAAYLMGVSSGDLKGLLHPRVRVGNIEYVTKGQSV  
EQVVFVAVGALAKATYDRLFRWLVSINQTLDTKLPRQFFIGVLDIAGFEIFEFNSEQLCINFTNEKLQQ  
FFNQHMVFLEQEEYKREGIDWVFIDFGLDLQPCIDLIEKPLGILSILEEEECMFPKASDASFRAKLYDNHS  
GKSPNFQPPRDKRKYQAHFEVHYAGVVPYSIVGWLEKNKDPNETVVPVIFQKSNRLLATLYENYAG  
SCSTEPKSGVKEKRKAASFQTVSGLHKNLNLMTNLRATQPHFVRCIVPENKTPGVMSFLVLHQL  
RCNGVLEGIIRICRQGFNRLYADFRQRYRILNPSAIPDDTFVDSRKATEKLLGSLDIDHTQYQFGHTKV  
FFKAGLLGILEELRDQRLAKVLTLLQARSRGRMLRLEYQRMLGGRDALFTIQWNIRAFNAVKNWSWMKLF  
FKMKPLLRSAQAEELALRAELRGLRGALATAEAKRQLEETQVSVTQEKNDLALQLQAEQDNLADAE  
RCHLLIKSKVQLEAKVKELSERLEDEEEVNADLAARRRKEDECTELKKDIDDELTLAKAEKEKQATEN  
KVKNLTEEMAALDEAVVRLTKEKALQEAHQALGDLQAEEDRVSAKAKIRLEQQVEDLECSLEQEK  
LRMDTERAKRLEGLKLTQETVDTTQDKQQLLEEKKKKDSLSQLNLRVEDEQLVGVQLQKKIKELQA  
RAEELEEELEAERAARARVEKQRAEAARELEELSERLEEAGGASAGQREGCRKREAEGLRRLRELEEAVL  
RHEATVAALRRKQADSAAELSEQVDSLQIRQKLEKEKSELRMEVDDLGA SVETLARGKASAEKLCRTYE  
DQLSEAKIKVEELQRQLADASTQRGRLQTENGELGRLL EEKESMISQLSRGKTSAAQSLEELRRQLEES  
KAKGALAHAVQALRHDCDLLREQHEESEAQELQRLSKANAQVQWRSKYEADAIQRTEELEAKKKL  
ALRLQEAEEGVEAANAKCSSLEKAKLRLQTESEDVTLELERATSAALDKKQRHLERALEERRRQEEEM  
QRELEAAQREARGLGTELFRLRHSHEEALEALETLKRENKQLQEEISDLTDQVSLSGKSIQLEKAKKAL  
EGEKSELQAAL EEAEGALELEETKTLRIQLELSQVKAQVDRKLAEKDEECTNLRNRNHQRAVESLQASLDA  
ETRARNEALRLKKKMEGDLNDLELQLGHATRQAMEAQAATRLQAQLKEEQAGRDEEQRLAELREQGQA  
LERRAALLAAEELRAALEQGERSRRLAEQELLEATERLNLLHSQNTGLLNQKKKLEVDLAQLSGVEVE  
AAQERREAEKAKKAITDAAMMAEELKKEQDTS AHLERMKKTLEQTVRELQARLEEAQALRGGKKQVQ  
KLEAKVRELEAELDAEQKHAEALKGVRKHERRVKELVYQTEEDRKNLARMQDLVDKLSQKVKSYKRQFE  
EAEQQASTNLAKYRKAQHELDAAERADMAETQANKLRARSRDALGPKHKE

TRTRPLE – GFP Tag – V

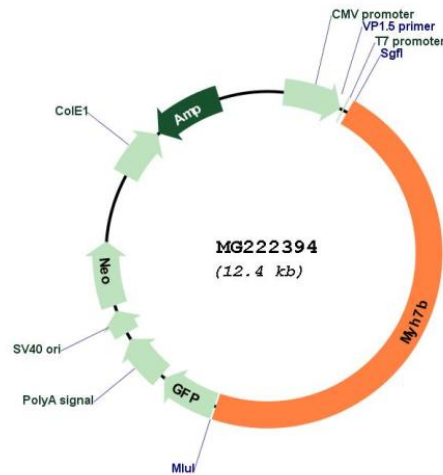
**Restriction Sites:**

Sgfl-Mlul

Cloning Scheme:



Plasmid Map:



ACCN: NM\_001085378

ORF Size: 5823 bp

OTI Disclaimer: The molecular sequence of this clone aligns with the gene accession number as a point of reference only. However, individual transcript sequences of the same gene can differ through naturally occurring variations (e.g. polymorphisms), each with its own valid existence. This clone is substantially in agreement with the reference, but a complete review of all prevailing variants is recommended prior to use. [More info](#)

<b>OTI Annotation:</b>	This clone was engineered to express the complete ORF with an expression tag. Expression varies depending on the nature of the gene.
<b>Components:</b>	The ORF clone is ion-exchange column purified and shipped in a 2D barcoded Matrix tube containing 10ug of transfection-ready, dried plasmid DNA (reconstitute with 100 ul of water).
<b>Reconstitution Method:</b>	<ol style="list-style-type: none"><li>1. Centrifuge at 5,000xg for 5min.</li><li>2. Carefully open the tube and add 100ul of sterile water to dissolve the DNA.</li><li>3. Close the tube and incubate for 10 minutes at room temperature.</li><li>4. Briefly vortex the tube and then do a quick spin (less than 5000xg) to concentrate the liquid at the bottom.</li><li>5. Store the suspended plasmid at -20°C. The DNA is stable for at least one year from date of shipping when stored at -20°C.</li></ol>
<b>RefSeq:</b>	<u>NM_001085378.2, NP_001078847.1</u>
<b>RefSeq Size:</b>	6163 bp
<b>RefSeq ORF:</b>	5826 bp
<b>Locus ID:</b>	668940
<b>UniProt ID:</b>	<u>A2AQP0</u>
<b>Cytogenetics:</b>	2 H1
<b>Gene Summary:</b>	This gene encodes a myosin heavy chain. The encoded protein forms a hexamer comprised of two heavy chains, two alkali light chains, and two regulatory light chain components. This complex functions in muscle contraction. [provided by RefSeq, Jun 2013]