

Product datasheet for **MG222391**

Mpig6b (NM_001191012) Mouse Tagged ORF Clone

Product data:

Product Type: Expression Plasmids
Product Name: Mpig6b (NM_001191012) Mouse Tagged ORF Clone
Tag: TurboGFP
Symbol: Mpig6b
Synonyms: AU023871; C6orf25; G6b; Ng31
Mammalian Cell Selection: Neomycin
Vector: pCMV6-AC-GFP (PS100010)
E. coli Selection: Ampicillin (100 ug/mL)
ORF Nucleotide Sequence: >MG222391 representing NM_001191012
Red=Cloning site Blue=ORF Green=Tags(s)

TTTTGTAATACGACTCACTATAGGGCGGCCGGAATTCGTCGACTGGATCCGGTACCGAGGAGATCTGCC
GCC**CGATCGCC**

ATGGCCTTGGTCCTGCCGCTGCTGCCTTTGTTGCTCTCAAAGGTCAGGGGAATCCCGAGGTTTCTTTGG
AGGGCAGCCCTGGGGACCGGGTGAATCTCTCTGCATAGGGGTCTCCGACCCACCCGCTGGGCTTGGGC
GCCTAGTTTCCAGCATGCAAGGGCTTGCTAAAGGGCGCCGTCGATCTTGTGGCCTCGACGAGAGGG
ACCCAACTGTGCTCCAGCATTTCTCTGGCCGCTGCGTTCCTGGACAATGGTATCAAGCGGCTAGAGC
TGCTGCTGAGCGCCGGGATTCTGGAACCTTTTCTGCAAAGGACGCCACGAGAATGAGAGTCGCACAGT
GCTTCAAGTGTTAGGGGACAAGGCAGGTTGCCGGCCTGCAGGATCTACCCACGGGTACGAGTATCCCAAG
GTCCTGATTCCGCTCCTGGGCGTTGGGCTTGCTGCTGGGACTGGGAGTCGGGGCGTGGTCTGGCGCGGC
GCAGACTCTCGCCTCCGCCCCACCCCGCCCGCTGGACCACTACCCACATTTGCTCCAGTCATAAA
TGCTGAGCCACAGAGGCCTTTAGAACAGGAGTCCAAGATCTCAGGCCACCTGGACCAGGAGCCGAGCCTG
CACTACGCTGATCTGGACCACTGTCTCCTCGGGAGGCACCGCGGATGTCCACAGTGTTTCTGGTGATG
CCTCCACTGTCTATGCGGTTGTAGTA

ACGCGTACGCGGCCGCTCGAG - GFP Tag - GTTTAA



[View online »](#)

Protein Sequence: >MG222391 representing NM_001191012
 Red=Cloning site Green=Tags(s)

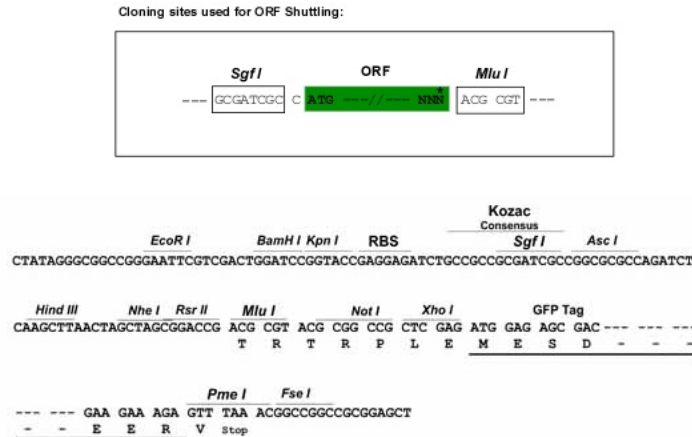
MALVLP LLPLLLSKVQGNPEVSLEGSPGDRVNLSCIGVSDPTRWAWAPSFPAKGLSKGRRPILWASTRG
 TPTVLQHFSGRLRSLDNGIKRLELLL SAGDSGTFCKGRHENESRTVLQVLGDKACRPA GSTHGYEYPK
 VLIPLLGVGLVLGLGVAGVVWRRRRLSPPPPPPPG PLPTFAPVINAEPQRPLEQESKISGHLDDQEPSL
 HYADLDHSVLGRHRRMSTVVSGDASTVYAVVV

TRTRPLE - GFP Tag - V

Chromatograms: https://cdn.origene.com/chromatograms/ja1707_b02.zip

Restriction Sites: SgfI-MluI

Cloning Scheme:



ACCN: NM_001191012

ORF Size: 726 bp

OTI Disclaimer: The molecular sequence of this clone aligns with the gene accession number as a point of reference only. However, individual transcript sequences of the same gene can differ through naturally occurring variations (e.g. polymorphisms), each with its own valid existence. This clone is substantially in agreement with the reference, but a complete review of all prevailing variants is recommended prior to use. [More info](#)

OTI Annotation: This clone was engineered to express the complete ORF with an expression tag. Expression varies depending on the nature of the gene.

Components: The ORF clone is ion-exchange column purified and shipped in a 2D barcoded Matrix tube containing 10ug of transfection-ready, dried plasmid DNA (reconstitute with 100 ul of water).

Reconstitution Method:

1. Centrifuge at 5,000xg for 5min.
2. Carefully open the tube and add 100ul of sterile water to dissolve the DNA.
3. Close the tube and incubate for 10 minutes at room temperature.
4. Briefly vortex the tube and then do a quick spin (less than 5000xg) to concentrate the liquid at the bottom.
5. Store the suspended plasmid at -20°C. The DNA is stable for at least one year from date of shipping when stored at -20°C.

RefSeq: [NM_001191012.1](#), [NP_001177941.1](#)

RefSeq Size: 2382 bp

RefSeq ORF: 729 bp

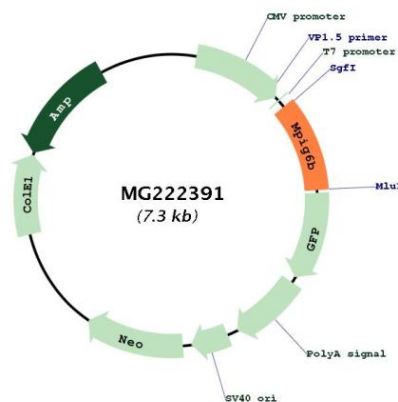
Locus ID: 106722

UniProt ID: [D7PDD4](#)

Cytogenetics: 17 B1

Gene Summary: Inhibitory receptor that acts as a critical regulator of hematopoietic lineage differentiation, megakaryocyte function and platelet production (PubMed:23112346). Inhibits platelet aggregation and activation by agonists such as ADP and collagen-related peptide (By similarity). This regulation of megakaryocyte function as well as platelet production and activation is done through the inhibition (via the 2 ITIM motifs) of the receptors CLEC1B and GP6:FcRgamma signaling (PubMed:23112346). Appears to operate in a calcium-independent manner (By similarity).[UniProtKB/Swiss-Prot Function]

Product images:



Circular map for MG222391