

Product datasheet for **MG222366**

Kcnip1 (NM_001190885) Mouse Tagged ORF Clone

Product data:

Product Type:	Expression Plasmids
Product Name:	Kcnip1 (NM_001190885) Mouse Tagged ORF Clone
Tag:	TurboGFP
Symbol:	Kcnip1
Synonyms:	KCHIP1; Kchip1.2
Mammalian Cell Selection:	Neomycin
Vector:	pCMV6-AC-GFP (PS100010)
E. coli Selection:	Ampicillin (100 ug/mL)
ORF Nucleotide Sequence:	>MG222366 representing NM_001190885 Red=Cloning site Blue=ORF Green=Tags(s)

TTTTGTAATACGACTCACTATAGGGCGGCCGGAATTCGTCGACTGGATCCGGTACCGAGGAGATCTGCC
GCC**CGATCGCC**

ATGGGGGCCGTCATGGGCACTTTCTCCTCCCTGCAGACCAACAAGGCGACCCTCTAAAGACATCGCCT
GGTGGTATTACCAGTATCAGAGAGACAAGATTGAGGATGAGCTAGAGATGACCATGGTTTGCCACCGGCC
TGAGGGACTGGAGCAGCTTGAGGCACAGACGAACCTCACCAAGAGAGAACTGCAAGTCTTGTACCGGGA
TTCAAAAACGAGTGCCCTAGCGGTGTGGTCAATGAAGAAACATCAAGCAGATCTACGCTCAGTTTTTCC
CTCACGGAGATGCCAGCACATATGCACATTACCTCTTCAATGCCTTCGACACCACCCAGACAGGCTCTGT
AAAGTTCGAGGACTTTGTGACTGCTCTGTGATTTACTGAGAGGGACAGTCCATGAAAACTAAGGTGG
ACGTTTAAATTTGTATGACATCAATAAAGACGGCTACATAAACAAGAGGAGATGATGGACATAGTCAAAG
CCATCTATGACATGATGGGGAAATACACCTATCCTGTGCTCAAAGAGGACACTCCAGGCAGCATGTGGA
TGTCTTCCAGAAAATGGATAAAAAATAAGATGGCATTGTAACGTTAGATGAATTTCTTGAAATCATGT
CAGGAGGATGACAACATCATGAGATCTCTACAGCTGTTCCAAAATGTCATG

ACGCGTACGCGGCCGCTCGAG - GFP Tag - GTTTAA



[View online »](#)

Protein Sequence: >MG222366 representing NM_001190885
Red=Cloning site Green=Tags(s)

MGAVMGTFSSLQTKQRRPSKDIWWYYQYQRDKIEDELEMTMVCHRPEGLEQLEAQTNFTKRELQVLYRG
 FKNECPGSGVVNEETFKQIYAQFPHGDASTYAHYLFNADFDTTQTGSVKFEDFVTALSILLRGTVHEKLRW
 TFNLYDINKDGYINKEEMMDIVKAIYDMMGKYTPVLKEDTPRQHVDVFFQKMDKNKDGIVTLDEFLESC
 QEDDNIMRSLQLFQNVN

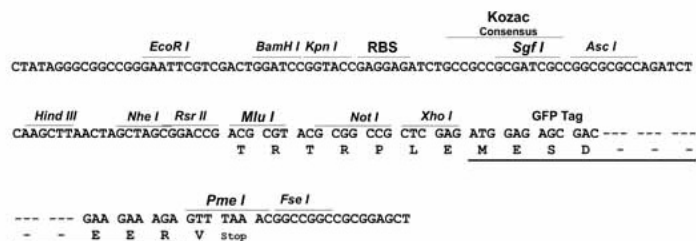
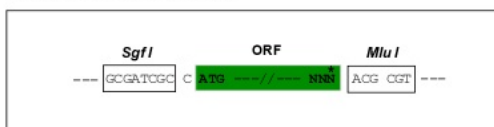
TRTRPLE - GFP Tag - V

Chromatograms: https://cdn.origene.com/chromatograms/ja1477_a05.zip

Restriction Sites: SgfI-MluI

Cloning Scheme:

Cloning sites used for ORF Shuttling:



ACCN: NM_001190885

ORF Size: 681 bp

OTI Disclaimer: The molecular sequence of this clone aligns with the gene accession number as a point of reference only. However, individual transcript sequences of the same gene can differ through naturally occurring variations (e.g. polymorphisms), each with its own valid existence. This clone is substantially in agreement with the reference, but a complete review of all prevailing variants is recommended prior to use. [More info](#)

OTI Annotation: This clone was engineered to express the complete ORF with an expression tag. Expression varies depending on the nature of the gene.

Components: The ORF clone is ion-exchange column purified and shipped in a 2D barcoded Matrix tube containing 10ug of transfection-ready, dried plasmid DNA (reconstitute with 100 ul of water).

Reconstitution Method:

1. Centrifuge at 5,000xg for 5min.
2. Carefully open the tube and add 100ul of sterile water to dissolve the DNA.
3. Close the tube and incubate for 10 minutes at room temperature.
4. Briefly vortex the tube and then do a quick spin (less than 5000xg) to concentrate the liquid at the bottom.
5. Store the suspended plasmid at -20°C. The DNA is stable for at least one year from date of shipping when stored at -20°C.

RefSeq: [NM_001190885.2](#)

RefSeq Size: 2291 bp

RefSeq ORF: 684 bp

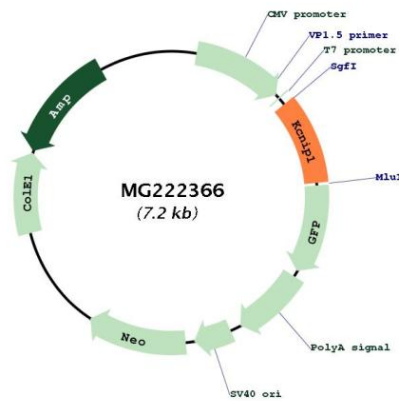
Locus ID: 70357

UniProt ID: [Q9JJ57](#)

Cytogenetics: 11 A4

Gene Summary: Regulatory subunit of Kv4/D (Shal)-type voltage-gated rapidly inactivating A-type potassium channels. Regulates channel density, inactivation kinetics and rate of recovery from inactivation in a calcium-dependent and isoform-specific manner. Modulates KCND2/Kv4.2 currents (PubMed:14572458). In vitro, modulates KCND1/Kv4.1 currents (By similarity). Increases the presence of KCND2 at the cell surface.[UniProtKB/Swiss-Prot Function]

Product images:



Circular map for MG222366