

Product datasheet for **MG222356**

Gab2 (NM_010248) Mouse Tagged ORF Clone

Product data:

Product Type:	Expression Plasmids
Product Name:	Gab2 (NM_010248) Mouse Tagged ORF Clone
Tag:	TurboGFP
Symbol:	Gab2
Synonyms:	A1463667; D130058117Rik; p97
Mammalian Cell Selection:	Neomycin
Vector:	pCMV6-AC-GFP (PS100010)
E. coli Selection:	Ampicillin (100 ug/mL)



[View online »](#)

ORF Nucleotide Sequence:

>MG222356 representing NM_010248
 Red=Cloning site Blue=ORF Green=Tags(s)

TTTTGTAATACGACTCACTATAGGGCGGCCGGGAATTCGTCGACTGGATCCGGTACCGAGGAGATCTGCC
 GCC**CGGATCGCC**

ATGAGCGGCGGCCGGCGGACGACGTGGTGTGTACCGGCTGGCTGAGAAATCGCCTCCCGAGAAGAAGT
 TGAGGCGCTATGCCTGGAAGAAACGCTGGTTTATACTTCGGAGTGGCCGAATGAGTGGAGATCCAGATGT
 TCTGGAATACTACAAGAATGAGCACTCCAAGAAACCCCTGCGGATCATCAACCTGAACCTGTGTGAGCAG
 GTGGATGCAGGCCTGACCTTCAACAAGAAAGAGCTGCAGGATAGTTTTGTGTTTATCAAGACCAGCG
 AGCGCACATTTTACCTGGTGGCTGAGACAGAGGCTGACATGAATAAGTGGGTCCAGAGCATCTGCCAGAT
 CTGCGGCTTCAATCAGGCTGAAGAGAGCACAGACTCCCTGAGGAACCTTTCTTCAGCCAGTCATGGTCCC
 CGCTCTTCTCCAGCTGAGTTCAGCTCCAGTCAGCACCTGCTCCGAGAACGGAAGTCTCAGCCCCCTCAC
 ACTCTAGCCAGCCTACTTTATTCAGTTTGTAGCCCCCTGTGTCAAGCCACATGCAGCCTACCTTGTCCAC
 CAGTGCACCTCAGGAGTATCTCTACTTGCACCAGTGCATAAGCAGAAGGACAGAAAATGCAAGGAGTGCC
 AGCTTCTCTCAGGGCACCCGGCAGAAAGAGTGATACAGCTGTGCAAAAACCTTGCCAGAGCAATGGACACT
 GTATCAACGGCGTCGGAGGTCAAGTCCATGGCTTCTATAGCCTTCCCAAGCCAAGCCGACACAATACAGA
 ATTCAAAGACAGTACTTATGATCTCCCACGGAGCCTGGCTTCCCATGGCCACACCAAGAGCAGCCTCACA
 GGGTCTGAGACTGATAACGAGGATGTGTACACCTTCAAGATGCCAGCAACACCTGTGTGCGGAACTTG
 GAGACCTCCTTGTGGACAATATGGATGTCCAACCACTCCTCTCTCAGCCTACCAGATCCCTAGAACATT
 CACACTGGACAAGAACCACAATGCCATGACAGTGGCCACTCCTGGAGATTAGCCATAGCTCCCCACCC
 CGGCCACCAAGCCAAGTCAGGCAGAAACACCTCAATGGGGCAGCATTAGCAAAAGACCTCCAATCAGCG
 AAAATAGCAGATCTGTAGCTGCTACTATCCCCAGGCGCAATACCCTCCCTGCAATGGACAACAGCCGACT
 CCATCGAGCTTCTTCTGTGAGACCTACGAGTACCCGGCACGAGGCAGTGGGGAAAGTGCCAGCTGGTCT
 GCTGAACCTCCAGGAAAGACTGCCGTAGGTGATCAAATAGTGCCAGCTCTGATGACAACACTACGTGCCCA
 TGAACCCAGGTTCTTCTACCCTGCTGGCTATGGAACGACCAGGGGACAACCTCCAGAGTGTCTACATCCC
 CATGAGCCAGGACCCCATCACTTTGACCCACTTGGCTACCCGTCCACAGCCCTTCTATTACAGAGGC
 CCCAGCCGAGGAAGTAAATCCAGCCACCCCGGTCAACCGAAACCTCAAGCCTGACAGAAAAGCAAAGC
 CAACACCCCTTGACCTGAGAAACAACACTGTGATCGATGAGCTGCCCTTCAAGTCACTGTACCAAGTC
 TTGGTCCAGGATCAACAGCCACACCTTTAACTCCAGTTCTCCAGTACTGCCGTCCTATCTCCACACAG
 AGCATCACCAGCACAGACTCGGGAGACAGTGGGAGAACTATGTCCCTATGCAAAACCCAGTATCTGCAT
 CCCTGTTCCCAGTGGCACTAACAGCCAGCTCCAAGAAGAGTACTGGCAGTGTGGATTATCTCGCCCT
 GGACTTCCAGCCGGGCTCCCCAAGCCCTCACCGCAAGCCATCCACATCATCTGTCACATCAGATGAGAAG
 GTAGACTATGTCCAAGTGGATAAAGAGAAGACCCAGGCCCTGCAGAACCCATGCAGGAGTGGACAGATG
 TGGCGCAGTCTCCGAACCTTCAAGGGTGCCAAGCTG

ACGCGTACGCGGCCGCTCGAG – GFP Tag – GTTTAA

Protein Sequence: >MG222356 representing NM_010248
 Red=Cloning site Green=Tags(s)

```

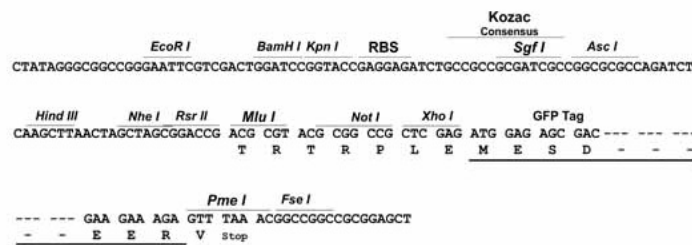
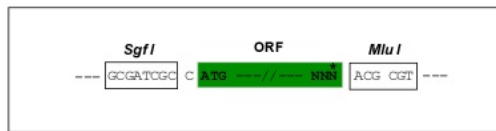
MSGGGGDDVVCTGWLKSPPEKKLRRYAWKKRWFILRSGRMSGDPDVLEYKNEHSKKPLRIINLNLCEQ
VDAGLTFNKKELQDSFVFDIKTSERTFYLVAETEAMNKWVQSIQCICGFNQAEESTDSLRLSSASHGP
RSSPAEFSSSQHLLRERKSSAPSHSSQPTLFTFEPPVSSHMQPTLSTAPQEYL YLHQISRRTENARSA
SFSQGRQKSDTAVQKLAQSNHCINGVGGQVHGFYSLPKPSRHNTFEKDYDLPRSLASHGHTKSSLT
GSETDNEDEVYTFKMPNLTCRELGDLLVDNMDVPTTPLSAYQIPRTFTLDKNHNAMTVATPGDSAIAPPP
RPPKPSQAETPQWGSIQQRPPISENSRVAATIPRRNTLPAMDNSRLHRASSCETYEYPARGSGESASWS
AEPGKTAVGRSNSASSDDNYVPMNPGSSTLLAMERPGDNSQSVYIPMSPGPHHFDPLGYPSTALPIHRG
PSRGSEIQPPPVRNRLKPDRAKAPTPDLRNNTVIDELPFKSPVTKSWRINSHTFNSSSQYCRPISTQ
SITSTDSGDSEENYVPMQNPVSASPVSGTNSPAPKKSTGSDVYALALDFQPGSPSPHRKPSTSSVTSDEK
VDYVQVDKEKTQALQNTMQEWDVDRQSSEPSKGAKL
  
```

TRTRPLE - GFP Tag - V

Restriction Sites: SgfI-MluI

Cloning Scheme:

Cloning sites used for ORF Shuttling:



ACCN: NM_010248

ORF Size: 1998 bp

OTI Disclaimer: The molecular sequence of this clone aligns with the gene accession number as a point of reference only. However, individual transcript sequences of the same gene can differ through naturally occurring variations (e.g. polymorphisms), each with its own valid existence. This clone is substantially in agreement with the reference, but a complete review of all prevailing variants is recommended prior to use. [More info](#)

OTI Annotation: This clone was engineered to express the complete ORF with an expression tag. Expression varies depending on the nature of the gene.

Components: The ORF clone is ion-exchange column purified and shipped in a 2D barcoded Matrix tube containing 10ug of transfection-ready, dried plasmid DNA (reconstitute with 100 ul of water).

Reconstitution Method:

1. Centrifuge at 5,000xg for 5min.
2. Carefully open the tube and add 100ul of sterile water to dissolve the DNA.
3. Close the tube and incubate for 10 minutes at room temperature.
4. Briefly vortex the tube and then do a quick spin (less than 5000xg) to concentrate the liquid at the bottom.
5. Store the suspended plasmid at -20°C. The DNA is stable for at least one year from date of shipping when stored at -20°C.

RefSeq: [NM_010248.2](#), [NP_034378.2](#)

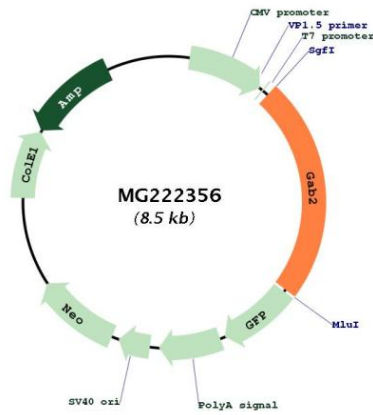
RefSeq Size: 6008 bp

RefSeq ORF: 2001 bp

Locus ID: 14389

Cytogenetics: 7 E1

Product images:



Circular map for MG222356