

## Product datasheet for **MG222343**

### Susd2 (NM\_001162913) Mouse Tagged ORF Clone

#### Product data:

Product Type:	Expression Plasmids
Product Name:	Susd2 (NM_001162913) Mouse Tagged ORF Clone
Tag:	TurboGFP
Symbol:	Susd2
Synonyms:	1200011D11Rik
Mammalian Cell Selection:	Neomycin
Vector:	pCMV6-AC-GFP (PS100010)
E. coli Selection:	Ampicillin (100 ug/mL)



[View online »](#)

ORF Nucleotide  
Sequence:

>MG222343 representing NM\_001162913  
Red=Cloning site Blue=ORF Green=Tags(s)

TTTTGTAATACGACTCACTATAGGGCGGCCGGGAATTCGTCGACTGGATCCGGTACCGAGGAGATCTGCC  
GCC**CGGATCGCC**

ATGAAGCTGGCCCTCTGCCTTGGATTTTGTGCTGCTCTCAACAATACCAGCCCCGGGTTACAGCAG  
CACATCCCTACAAAGTGTCTGAATCCGAGAAGAGCCAGCTGGTGAACGAGACCCATTGGCAATACTACGG  
CACTTCAGACACCAGGGAAACCTCAACCTCACCTGGGACACTTCAGCGCTGCCACGCCGGCCGTCACC  
ATTGAGCTGTGGGGCTATGAGGAGACAGGAAAACCTACTCTGGGAACTGGACCTCGAAGTGGTCTATC  
TGTACCCTTTGGCTACAAACATCCCAATACCGGCTTCTTCACTTTCACCCCAAACCCGCATCACCTCA  
GTACCAGAGGTGAAAAGTGGGTGCTCTGAGGATCAGCAGCAGCAGGAACACCCAGGAGAGAAGGATGTG  
CGGGCGCTCTGGACCAACGATCACGCACTGGCCTGGCACCTGGGTGACGACTTCCGGGCAGACTCCGTAG  
CCTGGGCCCGAGCACAGTGCCTGGCCTGGGAGGCATTGGAAGACCAACTACCAACTTCTGACGGAGCT  
GCCAGACTGCCCTGCACCTGGCCAGCCAGGGCTGATTCTGGCCGCTTCTTCACTGACTATGGTTGT  
GACATTGAACATGGCAGCGTATGCACCTACCACCCAGGGGCTGTGCACTGTGTGCCCTCTGTGCAAGCCA  
GCCCCAGGTATGGCTCAGGCCAGCAATGCTGCTACACGGCAGCAGGGACACAGCTCCTGACTTCAGACTC  
GACAAGTGGCAGCACCCCTGACCGTGGCCACGACTGGGGTGCACCCCATACCGACTCCTCCCCGTGTG  
CCGGCATGTCTCATTGGCTCTATGACGTCATCAGCTTCTATTACTGCTGTCTTTGGGCTCCTGAGTGTG  
CCCGTTATATGAAGCGCCGGCCCTCCAGTGACTGCCGCAACTACAGACCCCAACCGCTGGCCTCTGCCTT  
CGGGGACCCCATTTTGTACCTTTGATGGCACCAGCTTCTCGTTCAGCGGCAATGGCGAATATGTGCTA  
TTGGAGACCACCTGAGTGATCTGAGAGTGCAGGGCCGGCCAGCCTGGGAGAATGCCAATGGCACCC  
AGGCCCGTGGCACAGGGCTGACTGCAGTGGCCGTCCAAGAAGACAATTCGGATGTGATAGAGGTGCGGTT  
AGCTGGCGGGTCTCGGGTCTTGAAGTGTGCTGAATCAGAAAGTGTCTAGTTTCACTGAACAAAATTGG  
ATGGACCTGAAGGGCATGTTCTGTGCTGAGTGGCCGCTCAGGATAAGGTGTCAATCATGTTGTGATCGGGG  
CTGGCCTCGAGGTGCGGTGTACAAGTCTTTCTGAGTGTGAGCATTCTGTTGCCGAGAAGTTTCTGAC  
CCACACCCGTGGTCTCCTGGGGACACTCAACAATAACCCAGGGATGACTTACCCTGCGCAATGGGCAG  
GTCCTGCCCTGAATGCCAGTGTCTCAGCAGGTGTTCCAGTTTGGAGCCGACTGGGCTGTTTCCAACACGT  
CTTCCCTGTTTACTTATGACTCTTGGCTTCTGGTCTACCAATTCGTGTACGGACCAAGCACAACCCCAA  
CTTCAAACCACTTCCCTGATGAGACCACACTCAGCCCCAGCCAGACAGAAGATGTGGCCAGACTGTGT  
GAGGGTGACCGTTTCTGCATCCTTGATGTGATGAGCACAGGAAGCTCGAGCGTGGCAACGCCACCCGGA  
TTGCCACCAACTGCACCAGCACCGTCTGAAGAGCCTGCAGCCTGTGGTATCCTGTGGCTGGCTACCCCC  
ACCTGCAAACGGGCATAAGGAAGGCTTGAAGTACCTGGAAGGATCCGTTGTCCGATTACAGCTGCAACAAT  
GGCTACAGCTTGGTGGGGCCGGAGAGTAGCACCTGTGAGGCTGATGGAAGTGGTCTATGCCTACCCAG  
AGTGTGACCCAGGGCCGAGCTACACGGTGTACTGAGTATCATCTTCGGAGGCCTGGCCATAGTGGCACT  
GATCTCTATCATCTATATGATGCTGCATCGCCGAGGAAGAGCAACATGACCATGTGGAGCTCACAGCCC

**ACGCGT**ACGCGGCCGCTCGAG - GFP Tag - GTTTAA

Protein Sequence: >MG222343 representing NM\_001162913  
 Red=Cloning site Green=Tags(s)

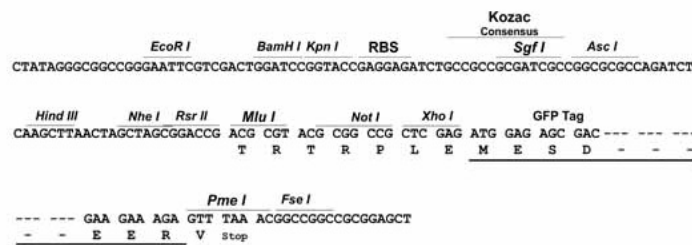
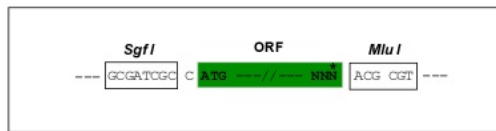
MKLLALLPWILMLLSTIPGPGFTAAPHYKVVSEKSQLVNETHWQYYGTS DTRGNLNL TWDT SALPTPAVT  
 IELWGYEETGKPYSGNWT SKWSYL YPLATNIPNTGFFTF PKPASPOYQRWKV GALRISSSRNYPGEKDV  
 RALWTDNDHALAWHLGDDFRADSVAWARAQCLAWEALEDQLPNFL TELPDCPCTLAQARADSGRFFTDYGC  
 DIEHGSVCTYHPGAVHCVRSVQASPRYGSQCCYTAAGTQLL TSDSTSGSTPDRGHDWGAPPYRTPPRV  
 PGM SHWLVDVISFYCC LWAPECPRYMKRRPSSDCRNYPRLASAFGDPHFVTFDGT SF SFGNGEYVL  
 LETT LSDLRVQGRAQPGRMPNGTQARGTGLTAVAVQEDNSDVI EURLAGGSRVLEVLLNQKVL SFT EQNW  
 MDLKG MFLSVA AQDKV S IMLSSGAGLEVGVQGPFLSVS ILLPEKFL THTRGLLGT LNNNPRDDFTLRNGQ  
 VLPLNAS AQQVFQFGADWAVSNTSSLFTYDSWLLVYQFVYGPKHNP NFKPLFPDETTLSPQS TEDVARLC  
 EGDRFCILDVMSTGSSSVGNATRIAHQLHQHRLKSLQPVVSCGWLPPPANGHKEGLRYLEGSV VRFSCNN  
 GYSLVGPESSTCQADGKWSMPTPECQPRSYTVLLSIIIFGLAIVALISIIYMLHRRRKS NMTMWSSQP

TRTRPLE - GFP Tag - V

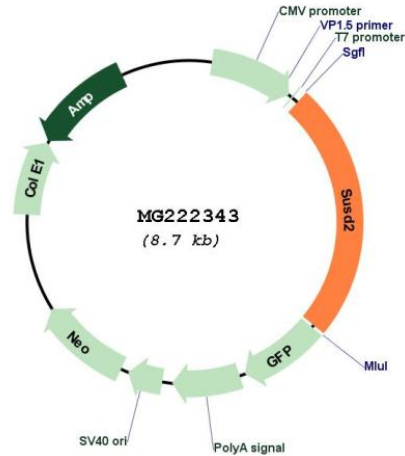
Restriction Sites: SgfI-MluI

Cloning Scheme:

Cloning sites used for ORF Shuttling:



Plasmid Map:



ACCN: NM\_001162913

ORF Size: 2100 bp

OTI Disclaimer: The molecular sequence of this clone aligns with the gene accession number as a point of reference only. However, individual transcript sequences of the same gene can differ through naturally occurring variations (e.g. polymorphisms), each with its own valid existence. This clone is substantially in agreement with the reference, but a complete review of all prevailing variants is recommended prior to use. [More info](#)

OTI Annotation: This clone was engineered to express the complete ORF with an expression tag. Expression varies depending on the nature of the gene.

Components: The ORF clone is ion-exchange column purified and shipped in a 2D barcoded Matrix tube containing 10ug of transfection-ready, dried plasmid DNA (reconstitute with 100 ul of water).

Reconstitution Method:

1. Centrifuge at 5,000xg for 5min.
2. Carefully open the tube and add 100ul of sterile water to dissolve the DNA.
3. Close the tube and incubate for 10 minutes at room temperature.
4. Briefly vortex the tube and then do a quick spin (less than 5000xg) to concentrate the liquid at the bottom.
5. Store the suspended plasmid at -20°C. The DNA is stable for at least one year from date of shipping when stored at -20°C.

RefSeq: [NM\\_001162913.1](#), [NP\\_001156385.1](#)

RefSeq Size: 2895 bp

RefSeq ORF: 2103 bp

Locus ID: 71733

UniProt ID: Q9DBX3

Cytogenetics: 10 C1

**Gene Summary:** May be a cytokine receptor for C10ORF99. May be a tumor suppressor; together with C10ORF99 has a growth inhibitory effect on colon cancer cells which includes G1 cell cycle arrest (By similarity). May play a role in breast tumorigenesis (PubMed:23131994). [UniProtKB/Swiss-Prot Function]