

## Product datasheet for **MG222265**

### Vav2 (NM\_009500) Mouse Tagged ORF Clone

#### Product data:

Product Type:	Expression Plasmids
Product Name:	Vav2 (NM_009500) Mouse Tagged ORF Clone
Tag:	TurboGFP
Symbol:	Vav2
Synonyms:	2810040F13Rik; AI847175; Vav-2
Mammalian Cell Selection:	Neomycin
Vector:	pCMV6-AC-GFP (PS100010)
E. coli Selection:	Ampicillin (100 ug/mL)



[View online »](#)

**ORF Nucleotide Sequence:**

>MG222265 representing NM\_009500  
 Red=Cloning site Blue=ORF Green=Tags(s)

TTTTGTAATACGACTCACTATAGGGCGGCCGGAATTCGTCGACTGGATCCGGTACCGAGGAGATCTGCC  
 GCC**CGCATCGCC**

ATGGAGCAGTGGCGGCAATGCGGCCGCTGGCTCATCGACTGCAAGTCTGCCGCCAACACCACCGCTCG  
 TGTGGCCCTCGGCGGTGGTCTTCGACCTGGCGCAGGCGCTGCGCGACGGGCTCCTTCTGTGCCAGCTGCT  
 GCACAACCTCTCCCCGGTTCCATCGACCTTAAGGACATCAACTTCCGGCCGAGATGTCCAGTTCTTG  
 TGTCTGAAGAATATTCGCACCTTCTCAAAGTCTGCCATGACAAATTTGGACTAAGAAACAGTGAGCTGT  
 TTGACCTTTTCGACCTCTTTGATGTCCGAGACTTCGGGAAGGTCACTCTGCAGTGTCCCGTCTGTCCCT  
 GCACAGCATCGCACAGAGCAAAGGGATCAGGCCATTTCCATCAGAGGAGACAGCTGAAAATGATGACGAC  
 GTCTACCGGAGCCTGGAAGAGCTGGCTGACGAGCATGACCTGGGTGAGGACATCTACGACTGTGTCCCGT  
 GTGAAGATGAAGGAGATGACATTTATGAGGACATCATCAAGGTGGAGGTGCAGCAGCCCATGAAAATGGG  
 CATGACTGAGGACGACAAGAGAAGCTGCTGCTTGTAGAGATTACAGGAGCCGAGGCCAAGTACTACCGC  
 ACCCTGGAGGACATTGAGAAGAACTACATGGGTCCCTTGGCGCTGGTGTGAGCCCGGCGGATATGGCTG  
 CTGTCTTCATCAACCTGGAGGACCTCATCAAGGTGCATCAGACTTTCTGCGAGCCATCGATGTGTCCAT  
 GATGGCTGGTGGCAGTACCCTGGCTAAGGTCTTTCTGGAGTTAAGGAAAGGCTCCTGATCTATGGAGAG  
 TACTGTAGCCACATGGAACACGCTCAGAGTACACTGAACCAGCTCCTCGCCAGCCGAGAGGACTTCAGGC  
 AGAAAGTGGAGGAGTGCACACTCAGGGTTCAGGATGGCAAGTTCAGCTGCAAGACCTGTGGTGGTGCC  
 CATGCAACGGGTGCTGAAGTACCACCTGCTGCTCAAGGAGCTCCTGAGCCATTCTGCAGACCACCAGAA  
 AGACAACAGCTCAAAGAAGCCCTGGAAGCCATGCAGGACTTGGCCATGTACATCAATGAAGTGAAGCGGG  
 ACAAGGAGACCTTGAAGAAGATTAGCGAGTTCAGTGTCCATAGAAAACCTGCAAGTGAAGTGGAGAG  
 ATTTGGGAGGCCAAAGATTGACGGGAGCTTAAAGTCCGGTCCATAGTCAACCACACCAAGCAAGACAGG  
 TACCTGTTCTATTTGACAAGGTGGTCACTCGTGTGCAAGAGGAAGGGCTACAGCTATGAGCTGAAGGAGG  
 TCATTGAGCTGCTCTCCACAAGATGACCGATGACCCGATGCACAACAAGGACATCAAGAAGTGGTCCCTA  
 TGGCTTCTACCTGATTACCTCCAAGGAAAGCAAGGCTTTTCAGTCTTCTGCAAGACGGAAGACATGAAG  
 CGGAAGTGGATGGAGCAGTTCGAGATGGCCATGTCAAACATCAAGCCAGATAAGGCCAATGCCAACCATC  
 ATAGCTTCCAGATGTACACATTCGACAAGACTACCAACTGCAAAGCCTGCAAGATGTTTCTCAGGGGTAC  
 CTTCTACCAGGGATACCTGTGTACCAGATGTGGCGTGGGGCACACAAGGAATGCCTGGAGGTGATCCCC  
 CCCTGCAAGATGAGTTCACCTGCAGATGTGGATGCTCCTGGAGCAGGACCAGGTCCAAGATGGTTGCTG  
 TGCAGAATTACCATGGTAACCCAGCCCCTCCTGGGAAGCCTGTGTTGACCTTCCAGACAGGAGACGTGAT  
 AGAACTGCTCCGGGGTGACCCCGATTCTCCTTGGTGGGAAGGGCGGCTGGTTCAAACCAGGAAGTACGGG  
 TATTTTCCAGCTCATCTGTGAAGCCCTGCCAGTGGATGGAAGGCCGCCTACTGGCCGCCACCATCCC  
 GGGAGATCGATTACACTGCCTACCCGTGGTTTGTGGCAACATGGAACGGCAGCAGACGGACAATCTGCT  
 CAAGTCTCATGCCAGTGGGACCTACCTCATCAGAGAGCGTCCAGCAGAGGCAGAACGCTTCGCCATCAGC  
 ATCAAGTTCATGATGAGGTGAAACATATCAAGGTGGTGGAGAAAGATAGCTGGATCCACATCACGGAAG  
 CTAAGAAGTTTGAGAGCCTCCTGGAGCTGGTGGAGTACTACCAGTGTCACTCACTCAAGGAAAGCTTCAA  
 GCAGTTGGACACTACACTCAAGTCCCCTACAAGTCTCGGGAGCGAACCACCAGCAGGGCCTCAAGCCGG  
 TCTCCAGCTTCTGCGCTTCTACAACTTTTCTTTCTCAGTCCCTCAGGGCCTCAGCTTTGCCCCCGAGG  
 CCCCTTCTGCTCCCTTCTGGTCAAGTGTTCACACCGCGGTCATCGGCACAGCCGTGGCCAGGTACAACCT  
 TGCTGCTCGAGACATGCGGGAGCTGTCACTGCGAGAAGGTGATGTGGTGAAGATCTACAGCCGAATTGGT  
 GGGGACCAGGGCTGGTGGAAAGGAGAGACAAATGGGCGGATCGGTTGGTTTCTTCGACGTACGTGGAAG  
 AGGAAGGCGTCCAG

**ACCGTACGCGGCCGCTCGAG** - GFP Tag - GTTTAA

Protein Sequence: >MG222265 representing NM\_009500  
 Red=Cloning site Green=Tags(s)

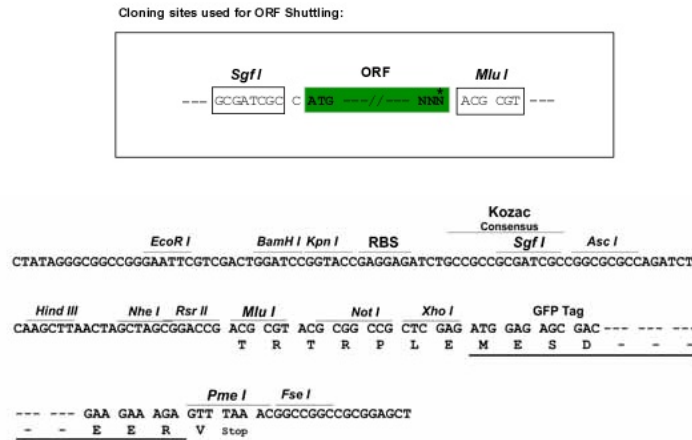
MEQWRQCGRWLDCKVLPNHRVWPSAVVFDLAQALRDGVLLCQLLHNLSPGSIDLKIDINFRPQMSQFL  
 CLKNIRTFCLKVCHDKFGLRNSELFDFDLFDVRDFGKVISAVSRLSLHSIAQSKGIRPPSEETAENDDD  
 VYRSLEELADEHDLGEDIYDCVPCDEGDDIYEDIKVEVQPPMKMGMTEDDKRSCCLLEIQETEAKYYR  
 TLEDIEKNYMGPLRLVLSPADMAAVFINLEDLIKVHHSFLRAIDVSMAGGSTLAKVFLEFKERLLIYGE  
 YCSHMEHAQSTLNQLLASREDFRQKVEECTLRVQDGKFKLQDLLVPMQRVLYHLLKELLSHSADRPE  
 RQQLKEALEAMQDLAMYINEVKRDKETLKKISEFQCSIENLQVKLEEFGRPKIDGELKVRISIVNHTKQDR  
 YLFLFDKVVIVCKRKGYSYELKEVIELLFHKMTDDPMHNKDIIKWSYGFYLIHLQKGQGFQFFCKTEDMK  
 RKWMEQFEMAMSNIKPKANANHHSFQMYTFDKTTNCKACKMFLRGTFYQGYLCTRCGVGAHKECLEVIP  
 PCKMSSPADVDAPGAGPGPKMVAVQNYHGNPAPPKPVLTFTQGDVIELLRGDPDSPWWEGRLVQTRKSG  
 YFPSSSVKPCVPDGRPPTGRPPSREIDYATYPWFAGNMRQQTNDLLKSHASGYLIRERPAEAERFAIS  
 IKFNDEVKHIKVVVEKDSWIHITEAKKFESLLELVEYYQCHSLKESFKQLDITLKFYKSRERTTSRASSR  
 SPASCASYNFSFLSPQGLSFAPQAPSAPFWSVFTPRVIGTAVARYNFAARDMRELSLREGDVVKIYSRIG  
 GDQGWKGETNGRIGWFPSTYVEEEGVQ

TRTRPLE - GFP Tag - V

Restriction Sites:

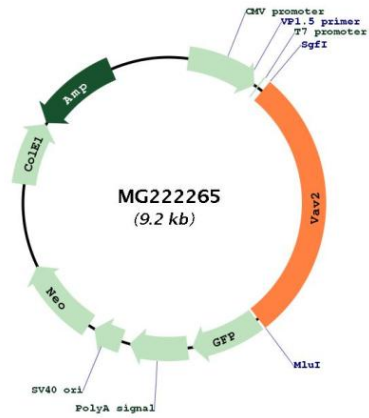
SgfI-MluI

Cloning Scheme:



<b>ACCN:</b>	NM_009500
<b>ORF Size:</b>	2604 bp
<b>OTI Disclaimer:</b>	The molecular sequence of this clone aligns with the gene accession number as a point of reference only. However, individual transcript sequences of the same gene can differ through naturally occurring variations (e.g. polymorphisms), each with its own valid existence. This clone is substantially in agreement with the reference, but a complete review of all prevailing variants is recommended prior to use. <a href="#">More info</a>
<b>OTI Annotation:</b>	This clone was engineered to express the complete ORF with an expression tag. Expression varies depending on the nature of the gene.
<b>Components:</b>	The ORF clone is ion-exchange column purified and shipped in a 2D barcoded Matrix tube containing 10ug of transfection-ready, dried plasmid DNA (reconstitute with 100 ul of water).
<b>Reconstitution Method:</b>	<ol style="list-style-type: none"><li>1. Centrifuge at 5,000xg for 5min.</li><li>2. Carefully open the tube and add 100ul of sterile water to dissolve the DNA.</li><li>3. Close the tube and incubate for 10 minutes at room temperature.</li><li>4. Briefly vortex the tube and then do a quick spin (less than 5000xg) to concentrate the liquid at the bottom.</li><li>5. Store the suspended plasmid at -20°C. The DNA is stable for at least one year from date of shipping when stored at -20°C.</li></ol>
<b>RefSeq:</b>	<a href="#">NM_009500.2</a> , <a href="#">NP_033526.1</a>
<b>RefSeq Size:</b>	3498 bp
<b>RefSeq ORF:</b>	2607 bp
<b>Locus ID:</b>	22325
<b>UniProt ID:</b>	<a href="#">Q60992</a>
<b>Cytogenetics:</b>	2 19.36 cM
<b>Gene Summary:</b>	This gene encodes a member of the Vav family of Rho guanine nucleotide exchange factors. Vav family proteins are involved in the development and activation of lymphocytes, and the encoded protein may also be involved in angiogenesis. Disruption of this gene in mice is associated with heart, artery, and kidney defects, as well as tachycardia and hypertension. Alternative splicing results in multiple transcript variants. [provided by RefSeq, Dec 2015]

Product images:



Circular map for MG222265