

Product datasheet for **MG222256**

Igfbp7 (NM_001159518) Mouse Tagged ORF Clone

Product data:

Product Type: Expression Plasmids
Product Name: Igfbp7 (NM_001159518) Mouse Tagged ORF Clone
Tag: TurboGFP
Symbol: Igfbp7
Synonyms: AGM; Fstl2; Mac25
Mammalian Cell Selection: Neomycin
Vector: pCMV6-AC-GFP (PS100010)
E. coli Selection: Ampicillin (100 ug/mL)
ORF Nucleotide Sequence: >MG222256 representing NM_001159518
 Red=Cloning site Blue=ORF Green=Tags(s)

TTTTGTAATACGACTCACTATAGGGCGGCCGGAATTCGTCGACTGGATCCGGTACCGAGGAGATCTGCC
 GCC**CGGATCGCC**

ATGATGGAGCGGCCGCCGCGCCCTGCTGCTGGGTGCAGCCGGACTGCTGCTCCTGCTCCTGCCCTCT
 CCTCTTCTCTCTTCGGATGCTGCGGCCGTGCGTGCCGGCCCTGCCCCGCGCTGCCCGGCTCGG
 CTGCCCGTGGGTGAGACCCGCGACGCGTGC GGTTGCTGCCCGGTGTGTGCTCGCGGCGAGGGT
 TCGCGGGCGGCCGCCGCGCAGGGGGCACTGCGCGCCGGCATGGAGTGCCTGAAGAGCCGCAAGAGGC
 GGAAGGGTAAAGCCGGGGCAGCAGCCGGCGGTCCCGCGACCCTCGCCGTGTGCGTGTGCAAGAGCCGCTA
 CCCGGTGTGCGGAGCAACGGCATCACCTACCCAGCGGCTGCCAGCTGCGCGCTGCCAGCTGCGCGCC
 GAGAGCCGCGGGGAGAAGGCCATCACCCAGGTCAGCAAGGGCACCTGCGAGCAAGGGTCTCTGATATGGG
 ACACCAACCAGCCAAAGGAGTCACAACCCACAGGTTGAGAACCCTGTTTTAGAGACAAGCACTCCAG
 AGAACAAGGTCTTCCATAGTGACGCCCCCAAGGACATCTGGAACGTCCTGGTGCCAAGGTGTTCTTG
 AGCTGTGAGGTGATCGGGATCCCAACCCCTGCTCATCTGGAACAAGGTAAGGAGGATCACTCTGGAG
 TTCAGCGGACAGAAGTCTTGCCTGGTGACCGGGAAAATCTGGCCATTGACACCCGGGGTGGTCCAGAAA
 GCATGAAGTAACGGGCTGGGTGCTGGTATCTCTCTAAGTAAGGAGGACGCTGGAGAGTATGAGTGCCAC
 GCATCCAACCCCAAGGGCAGGCTTCCGCGGACGCCAAAATTACAGTGGTTGATGCCCTCCATGAAATAC
 CACTGAAAAAAGGTGAAGGTGCTCAGTTA

AGCGGACCGACGCGTACGCGGCCGCTCGAG - GFP Tag - GTTTAA



[View online »](#)

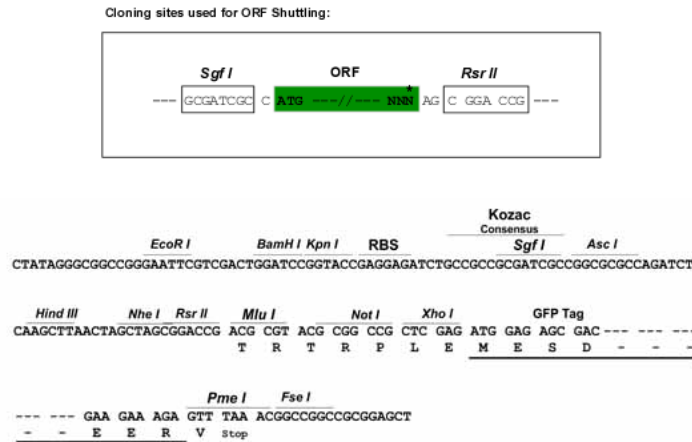
Protein Sequence: >MG222256 representing NM_001159518
 Red=Cloning site Green=Tags(s)

MMERPPRALLLGAAGLLLLLPLSSSSSSDACGPCVPASCPALPRLGCPLGETRDACGCCPVCARGESEP
 CGGGAAGRGHCAPGMECVKSRKRRKKGKAGAAAGPATLAVCVCKSRYPVCGSNGITYPSGCQLRAASLRA
 ESRGEKAITQVSKGTCEQGLIWDTQPAQRSHNPQVENRCFRDKHSREQGPSIVTPPKDIWNVTGAKVFL
 SCEVIGIPTPVL IWNKVKRDHSGVQRTELLPGDRENLAIQTRGGPEKHEVTGWVLVSPLSKEDAGEYECH
 ASNSQQQASAAAKITVVDALHEIPLKKGEGAQL

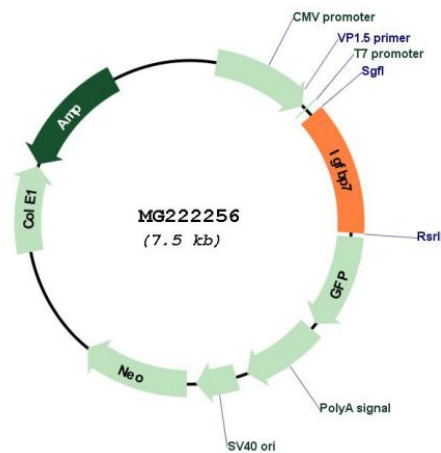
SGPTRRRLE - GFP Tag - V

Restriction Sites: Sgfl-RsrII

Cloning Scheme:



Plasmid Map:



ACCN: NM_001159518

ORF Size: 939 bp

OTI Disclaimer:	The molecular sequence of this clone aligns with the gene accession number as a point of reference only. However, individual transcript sequences of the same gene can differ through naturally occurring variations (e.g. polymorphisms), each with its own valid existence. This clone is substantially in agreement with the reference, but a complete review of all prevailing variants is recommended prior to use. More info
OTI Annotation:	This clone was engineered to express the complete ORF with an expression tag. Expression varies depending on the nature of the gene.
Components:	The ORF clone is ion-exchange column purified and shipped in a 2D barcoded Matrix tube containing 10ug of transfection-ready, dried plasmid DNA (reconstitute with 100 ul of water).
Reconstitution Method:	<ol style="list-style-type: none">1. Centrifuge at 5,000xg for 5min.2. Carefully open the tube and add 100ul of sterile water to dissolve the DNA.3. Close the tube and incubate for 10 minutes at room temperature.4. Briefly vortex the tube and then do a quick spin (less than 5000xg) to concentrate the liquid at the bottom.5. Store the suspended plasmid at -20°C. The DNA is stable for at least one year from date of shipping when stored at -20°C.
RefSeq:	NM_001159518.1 , NP_001152990.1
RefSeq Size:	1213 bp
RefSeq ORF:	942 bp
Locus ID:	29817
Cytogenetics:	5 C3.3
Gene Summary:	Binds IGF-I and IGF-II with a relatively low affinity Stimulates prostacyclin (PGI ₂) production. Stimulates cell adhesion (By similarity).[UniProtKB/Swiss-Prot Function]