

Product datasheet for **MG22237**

Hoxb8 (NM_010461) Mouse Tagged ORF Clone

Product data:

Product Type: Expression Plasmids
 Product Name: Hoxb8 (NM_010461) Mouse Tagged ORF Clone
 Tag: TurboGFP
 Symbol: Hoxb8
 Synonyms: Hox-2.4
 Mammalian Cell Selection: Neomycin
 Vector: pCMV6-AC-GFP (PS100010)
 E. coli Selection: Ampicillin (100 ug/mL)
 ORF Nucleotide Sequence: >MG22237 representing NM_010461
 Red=Cloning site Blue=ORF Green=Tags(s)

TTTTGTAATACGACTCACTATAGGGCGGCCGGAATTCGTCGACTGGATCCGGTACCGAGGAGATCTGCC
 GCC**CGATCGCC**

ATGAGCTCTTATTTTCGTCAACTCACTGTTCTCCAATACAAAACCGGGGAGTCCCTGCGCCCAATTATT
 ATGACTGCGGCTTCGCCAGGACCTGGCGGCCGACCCACCGTGGTGTACGGTCCCAGCAGCGCGGCAG
 CTTCCAGCACCTTCGAAATCCAGGAGTTCTACCACGGCCATCGTCGCTGCCACAGCTCCCTACCAG
 CAGAACCCTGCGCCGTGGCGTGCCACGGCACCCTGGCAACTTCTACGGCTACGACCTCTGCAGCGCC
 AGAGCCTGTTTCGGTGCAGGATCCAGACCTGGTGCAGTACGCAGACTGCAAGCTCGCGGCAGCCAGCGG
 CCTGGGCGAGGAGCCGAGGGGTCTGAGCAGAGCCCGTCGCCACACAGCTCTTTCCCTGGATGCGCCCT
 CAAGCAGCCGCCGAGCGCAGGCGAGGCCGCCAGACCTACAGTCGCTACCAGACCTGGAGCTGGAGAAGG
 AGTTCTATTTAATCCCTATCTGACTCGCAAGCGGAGGATCGAGGTATCGCACGCGCTGGGACTGACAGA
 GAGACAGGTCAAATCTGGTTCCAGAAATCGGAGAATGAAGTGGAAAAAGGAGAACAACAAGACAAGTTT
 CCCAGCAGTAAATGCGAGCAGGAGGAGCTGGAGAAAGAGAAGCTGGAGCGGGCACCAGAGACCGCCGAGC
 AGGGCGATGCGCAGAAGGGTGACAAGAAG

ACGCGTACGCGGCCGCTCGAG - GFP Tag - GTTTAA



[View online »](#)

Protein Sequence: >MG222237 representing NM_010461
Red=Cloning site Green=Tags(s)

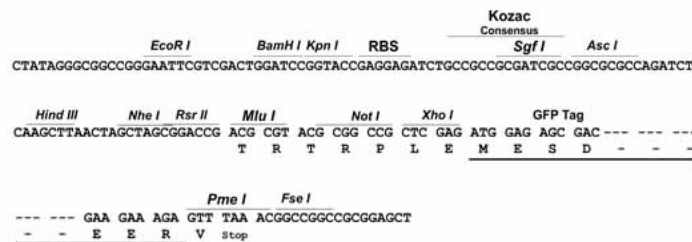
MSSYFVNSLFSKYKTGESLRPNYYDCGFAQDLGGRPTVVYGPSSGGSFQHPSQIQEFYHGSSLSTAPYQ
 QNPCAVACHGDPGNFYGYDPLQRQSLFGAQQPDLVQYADCKLAAASGLGEEAEGSEQSPSTQLFPWMP
 QAAAGRRRGRQTYSTRYQTLLEKEFLFNPYLTRKRRIEVSHALGLTERQVKIWFQNRMRMKWKKNKDKF
 PSSKCEQEELKEKLERAPETAEQGDAQKGDKK

TRTRPLE - GFP Tag - V

Restriction Sites: SgfI-MluI

Cloning Scheme:

Cloning sites used for ORF Shutting:



ACCN: NM_010461

ORF Size: 729 bp

OTI Disclaimer: The molecular sequence of this clone aligns with the gene accession number as a point of reference only. However, individual transcript sequences of the same gene can differ through naturally occurring variations (e.g. polymorphisms), each with its own valid existence. This clone is substantially in agreement with the reference, but a complete review of all prevailing variants is recommended prior to use. [More info](#)

OTI Annotation: This clone was engineered to express the complete ORF with an expression tag. Expression varies depending on the nature of the gene.

Components: The ORF clone is ion-exchange column purified and shipped in a 2D barcoded Matrix tube containing 10ug of transfection-ready, dried plasmid DNA (reconstitute with 100 ul of water).

Reconstitution Method:

1. Centrifuge at 5,000xg for 5min.
2. Carefully open the tube and add 100ul of sterile water to dissolve the DNA.
3. Close the tube and incubate for 10 minutes at room temperature.
4. Briefly vortex the tube and then do a quick spin (less than 5000xg) to concentrate the liquid at the bottom.
5. Store the suspended plasmid at -20°C. The DNA is stable for at least one year from date of shipping when stored at -20°C.

RefSeq: [NM_010461.2](#), [NP_034591.1](#)

RefSeq Size: 2645 bp

RefSeq ORF: 732 bp

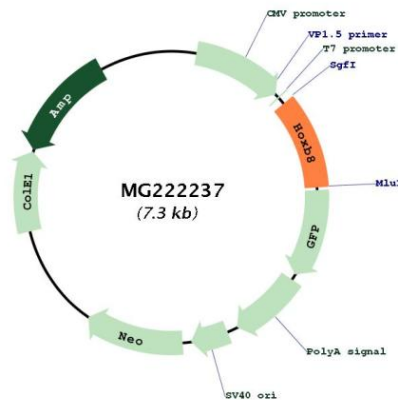
Locus ID: 15416

UniProt ID: [P09632](#)

Cytogenetics: 11 59.82 cM

Gene Summary: Sequence-specific transcription factor which is part of a developmental regulatory system that provides cells with specific positional identities on the anterior-posterior axis. [UniProtKB/Swiss-Prot Function]

Product images:



Circular map for MG222237