

Product datasheet for **MG222235**

Osbp19 (NM_001134791) Mouse Tagged ORF Clone

Product data:

Product Type:	Expression Plasmids
Product Name:	Osbp19 (NM_001134791) Mouse Tagged ORF Clone
Tag:	TurboGFP
Symbol:	Osbp19
Synonyms:	2600011I06Rik; AU015843; Orp-9
Mammalian Cell Selection:	Neomycin
Vector:	pCMV6-AC-GFP (PS100010)
E. coli Selection:	Ampicillin (100 ug/mL)



[View online »](#)

ORF Nucleotide Sequence:

>MG222235 representing NM_001134791
 Red=Cloning site Blue=ORF Green=Tags(s)

TTTTGTAATACGACTCACTATAGGGCGGCCGGGAATTCGTCGACTGGATCCGGTACCGAGGAGATCTGCC
 GCC**CGGATCGCC**

ATGGCTCTCTGCTGGCCGCTTGCAGAGTTTGGATTGAGGATTCATCCCAGTGTCCAAGACTTTGATA
 AGAACTTACCGAGGCTGACGCGTACCTGCAGATCTTGATAGAACAATTAAGCTTTTTGATGACAAGCT
 TCAAAATTGTAAGATGATGAACAGAGAAAGAAAGTTGAAACTCTCAAAGACACAACAAATAGCATGGTA
 GAATCAATTAACACTGCATTGTGTTGCTACAGATTGCTAAAAGTACTATTAATCCTGTAGATGCAATAT
 ACCAGCCTAGTCCCTTGGAACTGTGATCAGCACAATGCCTTCCCAGACTGCCTTACCTCCAGAACCCGC
 TCAGTTGTGTAAGTCAGAGCAGCGTCCATCTTCTTACCTGTTGGACCTGTGTTAGCTACCTTGGGACAT
 CATCAGACTCCAACACCAATAGTACAGGCAGTGGAACTCACCACCTAGCAGCAGTCTGACTCCTCCCA
 GCCATGTCAACTGTCTCCTCAAAACAGTCCCAGAGTCTCTTACTCTAGCAGTGAAGATGAGTTCTATGA
 TGCTGATGAATCCATCAAAGTGGCTCGTCCCAAAGCGCTTAATAGATTCTTCTGGATCTGCCTCAGTC
 TTGACACACAGCAGCTCCGAAAATAGCTTAAAACGCCAGATACCACAGAGTCTCTGAATTCCTCCATGT
 CCAATGGCACAAGCGATGCTGATCTTTTTGACTCACATGACGACAGAGATGATGATGGGGAGGCTGGGTC
 AGTGGAGGAGCACAAGAGCGTTATCATGCACCTTATCACAAGTCAAGCTGGGGATGGACCTCACAAAAG
 GTAGTTCTTCAAACGTTTATTCTCGAGAGAAGATCTCTGTTAGAAATGTATGCAGACTTTTTCGCACATC
 CAGACCTGTTCTGAGCATTAGTGTGATCAGAAGGATCCCAGGGATCGAATGGTTCAGGTTGTGAAATGGTA
 CCTCTCGCCTTCCATGCAGGAAGGAGAGGATCGGTGGCCAAAAGCCGTACAATCCTATTTTGGGTGAG
 ATCTTTCAGTGTCACTGGACGTTGCCGAATGATACTGAAGAGAACGCAGAGCTCGTTTCAGAAGGGCCGG
 TTCCCTGGGTTTCTAAGAACAGTGAACATTTGTGGCTGAGCAAGTTTCCACCATCCGCCATTTTCAGC
 CTTTTATGCTGAGTGTTTTAACAAGAAGATACAATTCAATGCTCATATCTGGACTAAATCAAATTCCTT
 GGGATGTCAATGGGGTACACAACATAGGTCAGGGCTGTGCTCGTGTCTGGAGTACGATGAGCACTACA
 TCCTCACGTTCCCAATGGCTATGGAAGGTCTATCCTGACAGTGCCTGGGTGGAATGGGAGGAGAATG
 CAATATCAACTGCTCAAACCGGTTACAGCGCAAACATCGTCTTCCACACTAAGCCTTTCTATGGGGGC
 AAGAAGCACAGAATTACTGCAGAGATTTTTCTCCGAATGACAAGAAATCCTTCTGCTCAATTGAAGGGG
 AATGGAATGGTATCATGTATGAAAATACGCAACAGGGGAAAACACTGTCTTTGTAGACACCAAGAAAT
 GCCTATAATCAAGAAAAAGGTGAGGAAGTTGGAAGATCAGAATGAGTATGAGTCCCGCAGCCTTTGGAAG
 GATGTCACCTTTCAATTTAAAAATCAGAGACATTGATGCAGCAACGGAAGCAAAGCACAGACTTGAAGAAA
 GACAAAGAGCAGAAGCCCGAGAAAGGAAGGAGAAGGAAATTCAGTGGGAGACGAGGCTTTTACAGGGA
 TGCGCAATGCTGGGTTACGATGAGCCTTACTGAAGCGTCTTGGTGTGTGAAGCAT

AG**CGGACCG**ACGCGTACGCGGCCGCTCGAG - GFP Tag - GTTTAA

Protein Sequence:

>MG222235 representing NM_001134791
 Red=Cloning site Green=Tags(s)

MALLLAACGLDSGFIPSVQDFDKLLEADAYLQILIEQLKLFDDKLQNCKDDEQRKQVETLKDITNSMV
 ESIKHCIVLLQIAKSTINPVDIYQPSLEPVISTMPSQTALPPEPAQLCKSEQRPSLPVGPVLA TLGH
 HQTPPTNSTGSGNSPPSSSLTPPSHVNLSPNTVPEFSYSSSEDEFYDADEFHQSGSSPKRLIDSSGSASV
 LTHSSGNSLKRPDTTESLNSSMSNGTSDADLFDSDHDDRDDGEGSVVEHKSVMHLLSQVRLGMDLTK
 VVLPPTFILERRSLEMYADFFAHPDLFVSI SDQKDRDRMVQVVKWYLSAFHAGRRGVSVAKKPYNPILGE
 IFQCHWTLPNDEENAELVSEGPVWVSKNSVTFVAEQVSHHPPISAFYAECFNKKIQFNAHIWTKSKFL
 GMSIGVHNI GQGCVSCLYDEHYILTFPNGYGRSILTPVWVWELGGECNINCSKTGYSANIVFHTKPFYGG
 KKHRITAEIFSPNDKKSFCSEIEGEWNGIMYAKYATGENTVFVDTKLP I IKKKVRKLEDQNEYESRSLWK
 DVTFNLKIRDIDAATEAKHRLERQRAEARERKEKEIQWETRLFHEDGECWVYDEPLLKRLGAVKH

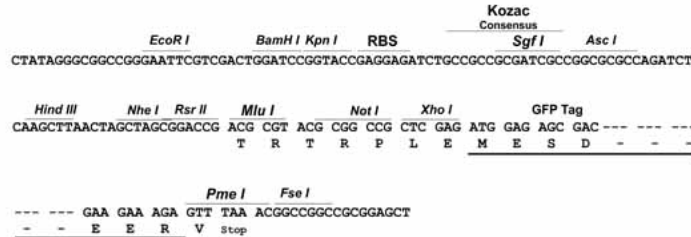
SGP**TRRRLE** - GFP Tag - V

Restriction Sites:

Sgfl-RsrII

Cloning Scheme:

Cloning sites used for ORF Shuttling:


ACCN: NM_001134791

ORF Size: 1878 bp

OTI Disclaimer: The molecular sequence of this clone aligns with the gene accession number as a point of reference only. However, individual transcript sequences of the same gene can differ through naturally occurring variations (e.g. polymorphisms), each with its own valid existence. This clone is substantially in agreement with the reference, but a complete review of all prevailing variants is recommended prior to use. [More info](#)

OTI Annotation: This clone was engineered to express the complete ORF with an expression tag. Expression varies depending on the nature of the gene.

Components: The ORF clone is ion-exchange column purified and shipped in a 2D barcoded Matrix tube containing 10ug of transfection-ready, dried plasmid DNA (reconstitute with 100 ul of water).

- Reconstitution Method:**
1. Centrifuge at 5,000xg for 5min.
 2. Carefully open the tube and add 100ul of sterile water to dissolve the DNA.
 3. Close the tube and incubate for 10 minutes at room temperature.
 4. Briefly vortex the tube and then do a quick spin (less than 5000xg) to concentrate the liquid at the bottom.
 5. Store the suspended plasmid at -20°C. The DNA is stable for at least one year from date of shipping when stored at -20°C.

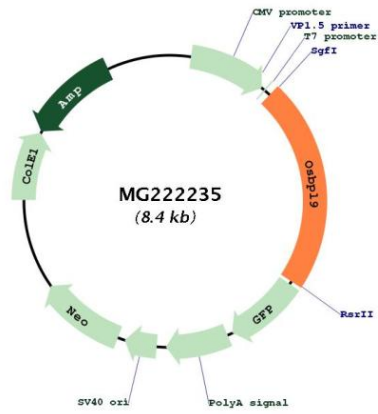
RefSeq: [NM_001134791.2](#), [NP_001128263.1](#)
RefSeq Size: 3109 bp

RefSeq ORF: 1881 bp

Locus ID: 100273

Cytogenetics: 4 C7

Product images:



Circular map for MG222235