

Product datasheet for **MG222234**

Osbp19 (NM_173350) Mouse Tagged ORF Clone

Product data:

Product Type:	Expression Plasmids
Product Name:	Osbp19 (NM_173350) Mouse Tagged ORF Clone
Tag:	TurboGFP
Symbol:	Osbp19
Synonyms:	2600011I06Rik; AU015843; Orp-9
Mammalian Cell Selection:	Neomycin
Vector:	pCMV6-AC-GFP (PS100010)
E. coli Selection:	Ampicillin (100 ug/mL)



[View online »](#)

ORF Nucleotide Sequence:

>MG222234 representing NM_173350
 Red=Cloning site Blue=ORF Green=Tags(s)

TTTTGTAATACGACTCACTATAGGGCGGCCGGAATTCGTCGACTGGATCCGGTACCGAGGAGATCTGCC
 GCC**CGCATCGCC**

ATGGCTCTCTGTGCGCCGTTGCGGAGGTTTGGATTGAGGATTCATCCCAGTGTCCAAGACTTTGATA
 AGAAACTTACCGAGGCTGACGCGTACCTGCAGATCTTGATAGAACAATTAAGCTTTTTGATGACAAGCT
 TCAAAATTGTAAGATGATGAACAGAGAAAGAAAGTTGAAACTCTCAAAGACACAACAAATAGCATGGTA
 GAATCAATTAACACTGCATTGTGTTGCTACAGATTGCTAAAGACCAGAGTAATGCGGAGCAGCAGCAG
 ATGGAATTATAAGTACTATTAATCCTGTAGATGCAATATACCAGCCTAGTCCCTTGGAACTGTGATCAG
 CACAATGCCTTCCAGACTGCCTTACCTCCAGAACCCGCTCAGTTGTGTAAGTCAGAGCAGCGTCCATCT
 TCCTTACCTGTTGACCTGTGTTAGCTACCTGGGACATCATCAGACTCCAACACCAAATAGTACAGGCA
 GTGGAACTCACCACCTAGCAGCAGTCTGACTCCTCCAGCCATGTCAACTTGTCTCAAATACAGTCCC
 AGATTCTCTTACTCTAGCAGTGAAGATGAGTTCTATGATGCTGATGAATCCATCAAAGTGGCTCGTCC
 CCAAAGCGCTTAATAGATTCTTCTGGATCTGCCTCAGTCTTGACACACAGCAGCTCCGAAATAGCTTAA
 AACGCCAGATACCACAGAGTCTCTGAATTCCTCCATGTCCAATGGCACAAAGCGATGCTGATCTTTTTGA
 CTCACATGACGACAGAGATGATGATGGGGAGGCTGGGTGAGTGGAGGAGCACAAGAGCGTTATCATGCAC
 CTCTTATCACAAGTCAGGCTGGGGATGGACCTCACAAGGTAGTTCTTCCAACGTTTATTCTCGAGAGAA
 GATCTCTGTTAGAAAATGATGCAGACTTTTTCGCACATCCAGACCTGTTCTGAGCATTAGTGATCAGAA
 GGATCCAGGGATCGAATGGTTCAGGTTGTGAAATGGTACCTCTCGGCCCTCCATGCAGGAAGGAGAGGA
 TCGGTGGCCAAAAGCCGTACAATCCTATTTGGGTGAGATCTTTCAGTGTCACTGGACGTTGCCGAATG
 ATACTGAAGAGAACGCAGAGCTCGTTTCAGAAGGGCCGTTCCCTGGGTTTCTAAGAACAAGTAAACATT
 TGTGGCTGAGCAAGTTTCCACCATCCGCCATTTTCAGCCTTTTATGCTGAGTGTTTTAAACAAGAAGATA
 CAATTCATGCTCATATCTGGACTAAATCAAATTCCTTGGGATGTCAATTGGGGTACACAACATAGGTC
 AGGGCTGTGTCTCGTGTCTGGAGTACGATGAGCACTACATCCTCACGTTCCCAATGGCTATGGAAGGTC
 TATCCTGACAGTGCCTGGGTGGAATGGGAGGAGAATGCAATATCAACTGCTCCAAAACGGTTACAGC
 GCAAACATCGTCTCCACACTAAGCCTTTCTATGGGGCAAGAAGCACAGAATTACTGCAGAGATTTTTT
 CTCCGAATGACAAGAAATCCTTCTGCTCAATTGAAGGGGAATGGAATGGTATCATGTATGCAAAATACGC
 AACAGGGGAAAACACTGTCTTTGTAGACACCAAGAAATGCCTATAATCAAGAAAAGGTGAGGAAGTTG
 GAAGATCAGAATGAGTATGAGTCCGCAGCCTTTGGAAGGATGTCACTTTCAATTTAAAAATCAGAGACA
 TTGATGCAGCAACGGAAGCAAAGCACAGACTTGAAGAAAGACAAAGAGCAGAAGCCGAGAAAGGAAGGA
 GAAGGAAATTCAGTGGGAGACGAGGCTTTTACAGAGGATGGCGAATGCTGGGTTTACGATGAGCCTTTA
 CTGAAGCGTCTTGGTGTGTGAAGCAT

AG**CGGACCG**ACGCGTACGCGGCCGCTCGAG - GFP Tag - GTTTAA

Protein Sequence:

>MG222234 representing NM_173350
 Red=Cloning site Green=Tags(s)

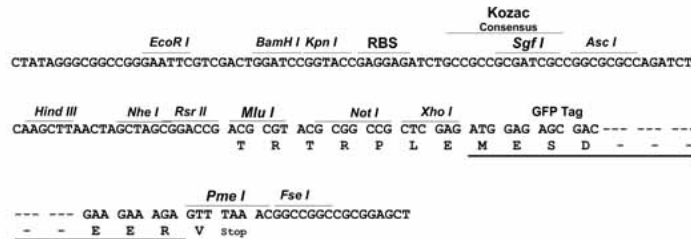
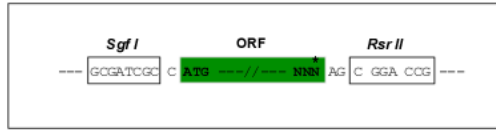
MALLLAACGGLDSGFIPSVQDFDKLLEADAYLQILIEQLKLFDDKLQNCCKDDEQRKQVETLKDTTNSMV
 ESIKHCVLLQIAKQSNAEQHADGIIISTINPVDIYQPSLEPVIISTMPSQTALPPEPAQLCKSEQRPS
 SLPVGPVLA TLGHHQTPN STGSGNSPPSSSLTPPSHVNLSPNTVPEFSYSSSEDEFYDADEFHQSGSS
 PKRLIDSSGSASVLT HSSSGNSLKRPTTESLNSMSNGTSDADLFD SHDRRDDG EAGSVEEHKSVIMH
 LLSQVRLGMDLTKVVLPTFILERRSLEMYADFFAHPDLFVSI SDQKDRDRMVQVVKWYLSAFHAGRRG
 SVAKKPYNPILGEIFQCHWTL PNDTEENAELVSEGPVWVSKNSVTFVAEQVSHHPPISAFYAECFNKKI
 QFNAHIWTKSKFLGMSIGVHNIQGCVSCL EYDEHYILTFPNGYGRSILTPWVELGGE CNINCSKTGYS
 ANIVFHTKPFYGGKHRITAEIFSPNDKKSFC SIEGEWNGIMYAKYATGENTVFVDTKKLP IIKKKVRKL
 EDQNEYESRSLWKDVTFNLKIRDIDAATEAKHRL EERQRAEARERKEKEIQWETRLFHEDGECWVYDEPL
 LKRLGAVKH

SGP**TRRRLE** - GFP Tag - V

Restriction Sites: SgfI-RsrII

Cloning Scheme:

Cloning sites used for ORF Shuttling:



ACCN: NM_173350

ORF Size: 1917 bp

OTI Disclaimer: The molecular sequence of this clone aligns with the gene accession number as a point of reference only. However, individual transcript sequences of the same gene can differ through naturally occurring variations (e.g. polymorphisms), each with its own valid existence. This clone is substantially in agreement with the reference, but a complete review of all prevailing variants is recommended prior to use. [More info](#)

OTI Annotation: This clone was engineered to express the complete ORF with an expression tag. Expression varies depending on the nature of the gene.

Components: The ORF clone is ion-exchange column purified and shipped in a 2D barcoded Matrix tube containing 10ug of transfection-ready, dried plasmid DNA (reconstitute with 100 ul of water).

Reconstitution Method:

1. Centrifuge at 5,000xg for 5min.
2. Carefully open the tube and add 100ul of sterile water to dissolve the DNA.
3. Close the tube and incubate for 10 minutes at room temperature.
4. Briefly vortex the tube and then do a quick spin (less than 5000xg) to concentrate the liquid at the bottom.
5. Store the suspended plasmid at -20°C. The DNA is stable for at least one year from date of shipping when stored at -20°C.

RefSeq: [NM_173350.3](#), [NP_775485.2](#)

RefSeq Size: 3148 bp

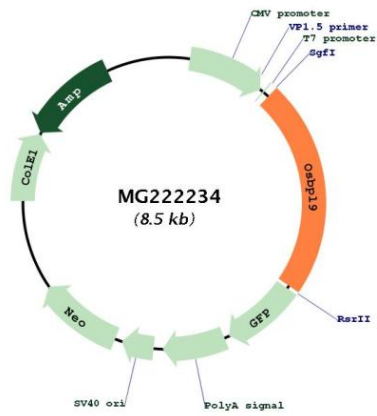
RefSeq ORF: 1920 bp

Locus ID: 100273

UniProt ID: [A2A8Z1](#)

Cytogenetics: 4 C7

Product images:



Circular map for MG222234