

Product datasheet for **MG222216**

Gphn (NM_145965) Mouse Tagged ORF Clone

Product data:

Product Type:	Expression Plasmids
Product Name:	Gphn (NM_145965) Mouse Tagged ORF Clone
Tag:	TurboGFP
Symbol:	Gphn
Synonyms:	5730552E08Rik; AI662856; BC027112; C230040D23; geph; GPH; GPHRYN
Mammalian Cell Selection:	Neomycin
Vector:	pCMV6-AC-GFP (PS100010)
E. coli Selection:	Ampicillin (100 ug/mL)



[View online »](#)

ORF Nucleotide
Sequence:

>MG222216 representing NM_145965
 Red=Cloning site Blue=ORF Green=Tags(s)

TTTTGTAATACGACTCACTATAGGGCGGCCGGAATTCGTGACTGGATCCGGTACCGAGGAGATCTGCC
 GCC**CGGATCGCC**

ATGGCGACCGAGGAATGATCCTCACCAACCACGACCATCAAATCCGTGTGCGGAGTCTCACAGTGAGTG
 ATAGCTGCTTCAGGAATCTTGCAGAAGACCGCAGTGGGATAAATCTAAAAGATCTTGTCCAAGATCCTTC
 TTTGTTGGGTGGGACTATATCGGCATACAAGATAGTACCAGATGAAATAGAAGAAATCAAGGAAACACTC
 ATAGACTGGTGTGATGAAAAGGAACCTAATTTAATATTAACAACCTGGAGGAACGGGGTTGCACCACGAG
 ATGTCACCTCCAGAGGCCACAAAAGAAGTAATAGAGCGGGAAGCGCCAGGGATGGCCCTGGCAATGCTGAT
 GGGATCGCTCAATGTACACCTCTGGGCATGCTCTCTAGACCAGTGTGTGAATAAGGGGAAAACCTCTG
 ATAATTAACCTACCTGGTAGCAAGAAAGGATCTCAGGAATGCTTTCAGTTCATACTGCCAGCTCTACCTC
 ATGCCATTGACCTTTTACGTGATGCCATTGTAAAAGTAAAGGAGGTGCATGATGAACTTGAAGATTTACC
 TTCCCCACCACCTCCTCTCTCCACCTCTACAACCTAGCCACATAAACAGACAGAAGACAAAAGGAGTT
 CAGTGTGAAGAAGAGGAAGAAGAAAAGAACAGTGGTGTAGCTTCAACAGAAGATAGTTCCCTCATCAC
 ATATAACTGCAGCAGCTCTTGTGCAAAGAAGCATCCATTCTACACCAGTCTGTCTTTTCATGGCAAA
 TCATGGGCAGCCCATCCCTGGTCTCATCAGTTATTTCCCATCATGCAACAGGCAGTGCAGATAAACGGATT
 CCAGACTCCATCATTTCTCGTGGTGTTCAGGTGCTCCCACGAGACACAGCCTCCCTTAGCACTACTCCTT
 CAGAATCGCCCCGTGCTCAGGCTACATCTCGCCTCTCTACAGTCTTGTCCAACACCAAAAAGTCCAGTC
 CAGGTGCAGCAGCAAGGAGAACATTCTAAGAGCCAGTACAGTGTGTAGATACCAAGGTGGCTAGA
 AGACATCGCATGTCTCCTTTTCCCCTGACGTCTATGGACAAAAGCCTTATTACAGTCTGGAGATGACTC
 CGGTGCTTGGTACAGAAATCATCAATTACCGAGATGGAATGGGGCGAGTCTTGTCAAGATGTATATGC
 AAAAGACAACCTACCCCCATTCCCTGCATCAGTAAAAGATGGCTATGCTGTTTCGAGCTGCTGATGGTCCA
 GGGGATCGTTTTCATCATTGGGGAATCCCAAGCTGGTGTGAGCAGCCAACTCAGACAGTAATGCCAGGACAAG
 TGATGCGGGTTACAACAGGTGCTCCAATCCCCTGCGGTGCTGATGCAGTAGTGAAGTTGAAGATACTGA
 ACTCATCAGGGAATCAGATGATGGTACTGAAGAACTTGAAGTACGAATTCTGGTGAAGCTCGGCCAGGC
 CAAGATATCCGACCCATCGGCCATGACATTAAGAGAGGGGAGTGTGTTTTGGCCAAAGGAACCCATATGG
 GCCCTTCAGAGATTGGTCTCCTTGAACCTGTGGGTGTACAGAAGTGAAGTTAATAAGTTTCCAGTGGT
 TGCCGTTATGTCAACAGGGAATGAGCTGCTAAATCCTGAAGATGATCTCTTACCAGGAAAGATTCGGGAC
 AGCAATCGATCAACACTTCTAGCAACAATTCAGGAACATGGTTACCCAACAATCAACCTGGGAATTGTAG
 GAGACAACCCAGATGACTTACTCAATGCCTTGAATGAGGGTATCAGCCGTGCTGATGTCATCATCAGCTC
 AGGAGGTGTGCCATGGGGGAAAAGGACTATCTCAAGCAGGTGCTGGACATTGATCTTATGCTCAGATC
 CATTTTGGCAGAGTTTTTATGAAGCCAGGCTTGCCAACAACATTTGCAACTTTGGATATTGATGGTGAA
 GAAAAATTATTTTGCCTACCAGGGAATCCTGTATCAGCTGTGGTCACTGCAACCTCTTTGTTGTACC
 TGCACTGAGAAAGATGCAGGGTATCTTGGATCCTCGGCCAACCATCATCAAAGCCAGGTTATCGTGTGAT
 GTAAAACCTGGACCCTCGCCAGAATACCACCGGTGATACTGACTTGGCATCACCAAGAACCCTGCCCT
 GGGCCAGAGTACAGGTAATCAGATGAGCAGCCGTCTGATGAGCATGCGCAGTGCCAATGGATTATTGAT
 GCTACCTCAAAGACAGAGCAGTACGTGGAACCTCACAAAGGCGAGGTGGTAGATGTCATGGTCATTGGA
 CGGCTA

ACGCGTACGCGGCCGCTCGAG – GFP Tag – GTTTAA

Protein Sequence: >MG222216 representing NM_145965
 Red=Cloning site Green=Tags(s)

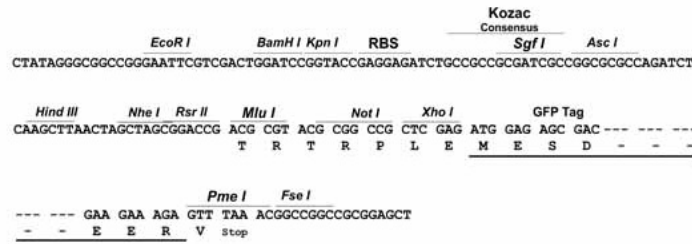
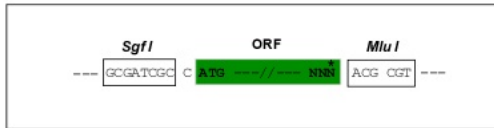
MATEGMILTNDHQIRVGLTVSDSCFRNLAEDRSGINLKDLVQDPSLLGGTISAYKIVPDEIEEIKETL
 IDWCDEKELNLILTTGGTGFAPRDVTPEATKEVIEREAPGMALMLMGLNVTPLGMLSRPVCGIRGKTL
 IINLPGSKKGSQECFQFILPALPHAIDLRLDAIVKVKEVHDELEDLPSPPPPPLSPPPTTSPHKQTEDKGV
 QCEEEEEKDKSGVASTEDSSSSHITAALAAKKHPPFYTSPALFMANHGQPIPLISYSHHATGSADKRI
 PDSIISRGVQVLPRTASLSTTPESESPRAQATSRLSTASCPTPKVQSRCSSKENILRASHSAVDITKVAR
 RHRMSPFPLTSMDKAFITVLEMPVLGTEIINYRDGMGRVLAQDVYAKDNLPPFPASVKDGYAVRAADGP
 GDRFIIGESQAGEQPTQTYMPGQVMRVTTGAIIPCADAVVQVEDTELIRESDDGTEELEVRIIVQARPG
 QDIRPIGHDIKRGEVLAAGTHMGPSEIGLLATVGVTEVEVNKFPVAVMSTGNELLNPEDLLPGKIRD
 SNRSTLLATIQEHGYPTINLGIIVGDNPDLLNALNEGISRADVITSGGVSMGEKDYLKQVLDIDLHAQI
 HFRVFMKPLPTTFATLDIDGVRKIIIFALPGNPVSAVVTGNLFFVPALRKMQGILDPRPTIIKARLSCD
 VKLDRPEYHRCILTWHHQEPLPWAQSTGNQMSSRLMSMRSANGLLMLPPKTEQYVELHKGEVVDVMVIG
 RL

TRTRPLE - GFP Tag - V

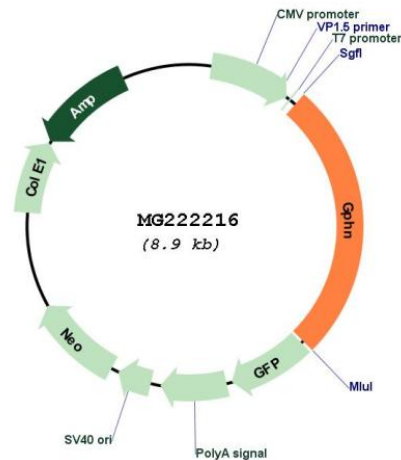
Restriction Sites: SgfI-MluI

Cloning Scheme:

Cloning sites used for ORF Shuttling:



Plasmid Map:



ACCN: NM_145965

ORF Size: 2316 bp

OTI Disclaimer: The molecular sequence of this clone aligns with the gene accession number as a point of reference only. However, individual transcript sequences of the same gene can differ through naturally occurring variations (e.g. polymorphisms), each with its own valid existence. This clone is substantially in agreement with the reference, but a complete review of all prevailing variants is recommended prior to use. [More info](#)

OTI Annotation: This clone was engineered to express the complete ORF with an expression tag. Expression varies depending on the nature of the gene.

Components: The ORF clone is ion-exchange column purified and shipped in a 2D barcoded Matrix tube containing 10ug of transfection-ready, dried plasmid DNA (reconstitute with 100 ul of water).

Reconstitution Method:

1. Centrifuge at 5,000xg for 5min.
2. Carefully open the tube and add 100ul of sterile water to dissolve the DNA.
3. Close the tube and incubate for 10 minutes at room temperature.
4. Briefly vortex the tube and then do a quick spin (less than 5000xg) to concentrate the liquid at the bottom.
5. Store the suspended plasmid at -20°C. The DNA is stable for at least one year from date of shipping when stored at -20°C.

RefSeq: [NM_145965.2](#), [NP_666077.2](#)

RefSeq Size: 3316 bp

RefSeq ORF: 2319 bp

Locus ID: 268566

Cytogenetics: 12 C3

Gene Summary:

Microtubule-associated protein involved in membrane protein-cytoskeleton interactions. It is thought to anchor the inhibitory glycine receptor (GLYR) to subsynaptic microtubules. Catalyzes two steps in the biosynthesis of the molybdenum cofactor. In the first step, molybdopterin is adenylated. Subsequently, molybdate is inserted into adenylated molybdopterin and AMP is released.[UniProtKB/Swiss-Prot Function]