

## Product datasheet for **MG222206**

### Timd4 (NM\_178759) Mouse Tagged ORF Clone

#### Product data:

**Product Type:** Expression Plasmids  
**Product Name:** Timd4 (NM\_178759) Mouse Tagged ORF Clone  
**Tag:** TurboGFP  
**Symbol:** Timd4  
**Synonyms:** B430010N18Rik; TIM-4; Tim4  
**Mammalian Cell Selection:** Neomycin  
**Vector:** pCMV6-AC-GFP (PS100010)  
**E. coli Selection:** Ampicillin (100 ug/mL)  
**ORF Nucleotide Sequence:** >MG222206 representing NM\_178759  
 Red=Cloning site Blue=ORF Green=Tags(s)

TTTTGTAATACGACTCACTATAGGGCGGCCGGAATTCGTCGACTGGATCCGGTACCGAGGAGATCTGCC  
 GCC**CGATCGCC**

ATGTCCAAGGGGCTTCTCCTCCTCTGGCTGGTGACGGAGCTCTGGTGGCTTTATCTGACACCAGCTGCCT  
 CAGAGGATACAATAATAGGGTTTTGGGCCAGCCGGTACTTTGCCTTGTCATTACCTCTCGTGGTCCCA  
 GAGCCGCAACAGTATGTGCTGGGCAAAGGTTTCATGTCCAATTCCAAGTCAATGCAGAGCTTCTCCGT  
 ACAGATGGAACAAGAATCATCTCCAGGAAGTCAACAAAATATACACTTTTGGGGAAGTCCAGTTTGGTG  
 AAGTGTCTTGACCATCTCAAACACCAATCGAGGTGACAGTGGGGTGTACTGCTGCCGTATAGAGGTGCC  
 TGGCTGGTTCAATGATGTCAAGAAGAATGTGCGCTTGGAGCTGAGGAGAGCCACAACAACCAAAAAACCA  
 ACAACAACCACCCGCAACCAACCCCTTATGTGACCACCACCACCCAGAGCTGCTTCCAACAACAG  
 TCATGACCACATCTGTTCTCCAACCAACCAACCCAGACTAGCCACCACTGCCTTCAGTACAGC  
 AGTGACCACGTGCCCTCAACAACCTGGCTCCTTCTCAAGAACCACAAAAGGGTCCGCTTCACT  
 ACAGAATCAGAACTCTGCCTGCATCCAATCACTCTCAAAGAAGCATGATGACCATATCTACAGACATAG  
 CCGTACTCAGGCCACAGGCTCTAACCTGGGATTCTCCCATCCACTTACAGCTGACGACACAGAAAAC  
 AACATTAACAACAAGTGAAGTCTTTGCAGAAGACAATAATCACATCAGATCAACAGCAGACAGACCATC  
 TTGATCATTGCCGTGCTGTGGGATTTGTGCTAATGGTGTATTGTTTCTGGCGTTTCTCCTTCGAGGGA  
 AAGTCACAGGAGCCAAGTGTTCAGAGACACAAGAGGCCAGACAACACTGAAGATAGTGACAGCGTCCT  
 CAATGACATGTCACACGGGAGGGATGATGAAGACGGGATCTTCACTCTC

**ACGCGT**ACGCGGCCGCTCGAG - GFP Tag - GTTTAA



[View online »](#)

**Protein Sequence:** >MG222206 representing NM\_178759  
Red=Cloning site Green=Tags(s)

```
MSKGLLLLWLVTELWWLYLTPAASEDTIIGFLGQPVTLPCHYLSWSQSRNSMCWKGKSPNSKCNALLR
TDGTRII SRKSTKYTL L GKVQFGEVSLTISNTNRGDSGVYCCRIEVPGWFNVDVKKNVRLERATTTKKP
TTTTTRPTTTPYVTTTTPELLPTTVMTTSVLPTTTPPQTLATTAFASTAVTTCPTTPGSFQSQETTKGSAFT
TESETLPASNHSQRSMMTISTDIAVLRPTGSDNGILPSTSQLTTQKTTLTTSSESLQKTTKSHQINSRQTI
LIIACCVGFVLMVLLFLAFLLRGKVTGANCLQRHKRPDNTEDSDSVLNDMSHGRDDEDGIFTL
```

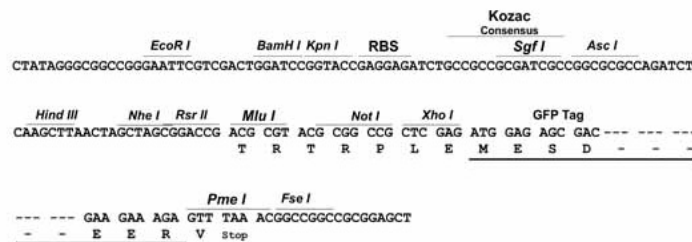
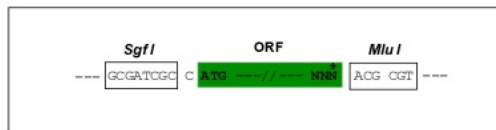
TRTRPLE - GFP Tag - V

**Chromatograms:** [https://cdn.origene.com/chromatograms/ja1700\\_g08.zip](https://cdn.origene.com/chromatograms/ja1700_g08.zip)

**Restriction Sites:** SgfI-MluI

**Cloning Scheme:**

Cloning sites used for ORF Shuttling:



**ACCN:** NM\_178759

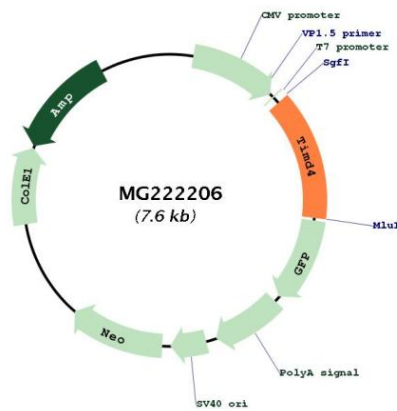
**ORF Size:** 1029 bp

**OTI Disclaimer:** Due to the inherent nature of this plasmid, standard methods to replicate additional amounts of DNA in *E. coli* are highly likely to result in mutations and/or rearrangements. Therefore, OriGene does not guarantee the capability to replicate this plasmid DNA. Additional amounts of DNA can be purchased from OriGene with batch-specific, full-sequence verification at a reduced cost. Please contact our customer care team at [custsupport@origene.com](mailto:custsupport@origene.com) or by calling 301.340.3188 option 3 for pricing and delivery.

The molecular sequence of this clone aligns with the gene accession number as a point of reference only. However, individual transcript sequences of the same gene can differ through naturally occurring variations (e.g. polymorphisms), each with its own valid existence. This clone is substantially in agreement with the reference, but a complete review of all prevailing variants is recommended prior to use. [More info](#)

- OTI Annotation:** This clone was engineered to express the complete ORF with an expression tag. Expression varies depending on the nature of the gene.
- Components:** The ORF clone is ion-exchange column purified and shipped in a 2D barcoded Matrix tube containing 10ug of transfection-ready, dried plasmid DNA (reconstitute with 100 ul of water).
- Reconstitution Method:**
1. Centrifuge at 5,000xg for 5min.
  2. Carefully open the tube and add 100ul of sterile water to dissolve the DNA.
  3. Close the tube and incubate for 10 minutes at room temperature.
  4. Briefly vortex the tube and then do a quick spin (less than 5000xg) to concentrate the liquid at the bottom.
  5. Store the suspended plasmid at -20°C. The DNA is stable for at least one year from date of shipping when stored at -20°C.
- RefSeq:** [NM\\_178759.4](#), [NP\\_848874.3](#)
- RefSeq Size:** 2175 bp
- RefSeq ORF:** 1032 bp
- Locus ID:** 276891
- UniProt ID:** [Q6U7R4](#)
- Cytogenetics:** 11 B1.1
- Gene Summary:** Phosphatidylserine receptor that enhances the engulfment of apoptotic cells. Involved in regulating T-cell proliferation and lymphotoxin signaling. Ligand for HAVCR1/TIMD1. [UniProtKB/Swiss-Prot Function]

**Product images:**



Circular map for MG222206