

Product datasheet for **MG222188**

Ern2 (NM_012016) Mouse Tagged ORF Clone

Product data:

Product Type:	Expression Plasmids
Product Name:	Ern2 (NM_012016) Mouse Tagged ORF Clone
Tag:	TurboGFP
Symbol:	Ern2
Synonyms:	Ern1; Ire1; ire1-beta; Ire1b; mlre1
Mammalian Cell Selection:	Neomycin
Vector:	pCMV6-AC-GFP (PS100010)
E. coli Selection:	Ampicillin (100 ug/mL)



[View online »](#)

ORF Nucleotide Sequence:

>MG222188 representing NM_012016
 Red=Cloning site Blue=ORF Green=Tags(s)

TTTTGTAATACGACTCACTATAGGGCGGCCGGGAATTCGTCGACTGGATCCGGTACCGAGGAGATCTGCC
 GCC**CGGATCGCC**

ATGGCGAGACCAGTCCAGAGATTTCAACTGTGGTCTCCTCTCGGTTCTCTGCTGCAGCTTGTGACGTTGC
 TGGGGAAACTCGGTCCACAGGTCCAGTCTGTGAGGCCAGAGACCTTCTGTTTGTGTCTACCTTGGACGG
 AAGTCTCCATGCACTGAACAAGCAGACAGGGGACTTGAAGTGGACAGTGAAGGATGACCCCATCATCCAG
 GGCCCAATGTATGTCACAGAAATGGCCTTTCTCTCTGACCCAGCTGACGGCAGCCTGTATGTCTTGGGAA
 CCCAGAAACAACAGGGGCTGATGAAACTGCCATTACCATCCCAGAGCTGGTTCATGCCTCTCCCTGTGCG
 CAGCTCTGATGGTGTCTTCTACACAGGCCGGAAGCAGGATGCCTGGTTTGTAGTGGACCTGAGTCAGGG
 GAGACTCAGATGACACTGACCACAGAAGGCCTCTACTCCTCAACTTTTCATTGGCCGAACACAGTACA
 CAGTCTCCATGCATGACCTACGGACCCAGCCCTGCGGTGGAACACAACCTATCGCCGCTACTCAGCACC
 CCTCCTGAATGGCTCACCGGAAATACATGAGCCACCTGACATCCTGTGGGATGGCCCTGCTTCTCACT
 GTGGATCCAGGAAGTGAATTGTGCTGTGGACACAGGACCTGGGAGTGCCTGTGACAGGGATTTACACAT
 GGCACCAGGATGGTCTGCACCAGCTGCCCATCTCACACTGGCTCGGGACACCCTACATTTCTTGTCTCT
 CCGCTGGGGCCACATCCGTCTTCTGCCTCCAGCTACCAAGACACAGCCACCCAGTTCTTCTCTTAGAC
 ACCCAGCTTTTGTGACTGTATGTGGGGAAAGAAGAAGCTGGGTTCTATGTCTCTAAAGCACTGGTCC
 ACGCTGGGGTGGCCCTCGTGCCCGTGGACTGACCCTGGCACCCTAGGACGGTCCCAACAGATGAGGT
 GACACTCAAGTCTCGGGGAGCGAGAGGGCTCACCCAGCACTGCTGTGAGTACCCCTCAGGCAGCGTG
 GCCCTCCCAGCCAGTGGCTACTCATTGGATACCACGAACCTCCCCCGTTCTACACACAACCATGCTGC
 GGTTTCATCCCATCCCAGGAAAGTGTCTGCTGAGACACGAGCCTCAGAGGACCTCCATGCTCCACTGT
 CTTTTTGTAGCTCCTAAACCTGAGGAGGAGGATCCAGAACTACATCCTGAAGAGAAAGCTTCAGACTCT
 TATCCAGGGCTGGGATCCCAAGACCTGCTAGCAGCTACCTTCACTGCCATCCTCTGGGAGCCTGGGTCC
 TCTACCTGATGAGGCAGCAGCAGAGCCCTTCAACCTGCTGGCCCTCTGACCTCTCACAGGATGC
 TCAGGGACAGCTCTCAAGGGACATCTTACAGGACCAGAGGAGATTTCAAAGCCCTCAGAGCCAGCCAG
 CCACCTCATGACCCTGAAGGGCAGCCACCGTGGTGGGAAAGATTTCTTCAACCCCAAGGATGTGCTGG
 GCCGTGGGGCAGGAGGGACTTTTGTTCGAGGACAGTTTGGGGGCGGGCAGTGTGTAAGAGGCT
 CCTCCGAGAGTGTTCGCTTGGTTCGGCGAGAGGTGCAGCTGCTGCAAGAGTCTGACCGGCACCCCAAC
 GTGCTTCGCTACTTCTGCACTGAGCATGGTCCCAGTTCCACTACATTGCCTTGGAGCTCTGCCAGGCC
 CCTTGCAAGAGTACGTGGAGAGCCAGACCTAGATCGCTGGGGCCTGGAGCCACCACAGTGTGCAGCA
 GATGATGTCCGGCCTGGCCCATCTACATTCCTTACACATAGTACACCGTGACCTAAAGCCAGCCAACATT
 CTCATGGCTGGGCCTGACAGCCAGGGCCAAGGCAGAGTGGTATCTCTGACTTCGGCCTCTGCAAGAAGC
 TACCTGTTGGCCGTTGTAGTTCAGTCTCCATTCTGGTATTCCCGGCACAGAAGGCTGGATGGCACCAGA
 GCTCCTGCAGCTCCCCCAGACAGCCCGACCAGCGCTGTGGATATCTTCTCCGACGGCTGCGTATTTTAT
 TACGTGCTTTCGGTGGCAGCCACCCCTTTGGAGAGAGTCTCTACCGACAGGCCAACATCCTCTCAGGGG
 ATCCCTGTCTGGCTCAGCTGCAGGAAGAGACCCATGACAAGTTGTGGCATTGGACTTAGTGAGAGCCAT
 GCTGAGCTTGTGCCCCAGGATCGCCCTCGGCAGGATGGTACTGGCTCACCCCTCTTTTGGAGCAGA
 GCTAAGGAGCTCCAGTTCTTCCAGGATGTCAGTACTGGTTGGAGAAGGAACCAGATCAGGGGCCTCTCG
 TGTCCGGCCTGGAGGCAGGAAGCTACAAGTGGTCCGGGAAGACTGGCACAAGCAGTCTCAGCCCTCT
 GCAGGCAGATCTGAAAAGGTTCCGCTCATACAAAGGGACATCAGTTGAGACCTGCTCCGGGCCATGAGG
 AACAGAAGCACCCTACAGGGAGCTCCAGCTGAGGTGCCAGACACTAGGCCAACTTCTGCTGGCT
 TCATTCACTTACACAGCGATTCCCAGGCTGTTGCTGCACACTCACCGTGCATGAGGACCTGCGC
 CTCTGAGAGCCTTCTGCCCCTACTACCACAGCTCTGGAAGCCAGGAGGCCAGATGCCACAAAGAGC

ACGCGTACGCGGCCGCTCGAG - GFP Tag - GTTTAA

Protein Sequence: >MG222188 representing NM_012016
 Red=Cloning site Green=Tags(s)

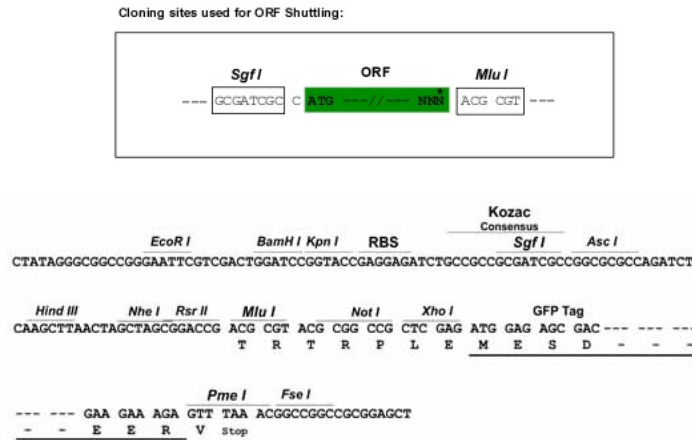
MARPVQRFQLWSPLGFLQLVTLGKLGKLPQVQSVRPESLLFVSTLDGSLHALNKQTGDLKWTVKDDPIIQ
 GPMYVTEMAFLSDPADGSLYVLGTQKQQLMKLPFTIPELVHASPCRSSDGVFYTRGRKQDAWFVVDPEESG
 ETQMTLTTEGLSTPQLF IGRTQYTVSMHDLRTPALRWNTTYRRYSAPLLNGSPGKYMSHLTSCGMGLLLT
 VDPGSGIVLWTQDLGVPVTGIYTWHQDGLHQLPHLTLARDTLHFLVLRWGHIRLPASSYQDTATQFSSLD
 TQLLMTLYVGKEEAGFYVSKALVHAGVALVPRGLTLAPMDGPTTDEVTLQVSGEREGSPSTAVRYPGSGV
 ALPSQWLLIGYHEPPVHLHTMLRVHPIPKVSAETRAEDLHAPPVFFELLNLRREDPELHPPEEKASDS
 YPGLGSQDLAATFTAILLGAWVLYLMRQQQSPSAPAGPPDLSDAQGQLSRDILQDQRRFQSPSEPAQ
 PPHDPEGQPTVVGKISFNPKDVLGRGAGGTFVFRGQFEGRAVAVKRLRECFGLVRREVQLLQESDRHPN
 VLRYFCTEHGPQFHIALELCQASLQEYVESPDLDRWGLEPTTVLQQMMSGLAHLHSLHI VHRDLKPANI
 LMAGPDSQGGRVVISDFGLCKKLPVGRCSFLHSGIPGTEGWMAPELLQLPPDSPTS AVDIF SAGCVFY
 YVLSGGSHPFGESLYRQANILSGDPCLAQLQEE THDKVVALDLVRAML SLLPQDRP SAGWLAHPLFWSR
 AKELQFFQDVSDWLEKEPDQGPLVSALEAGSYKVVREDWHKHSAPLQADLKRFRSYKGTSVRDLLRAMR
 NKKHHYRELPAEVRQTLGQLPAGFIQYFTQRFPRLLLHTRAMRTCASESLFLPYYPALARRPDATKS

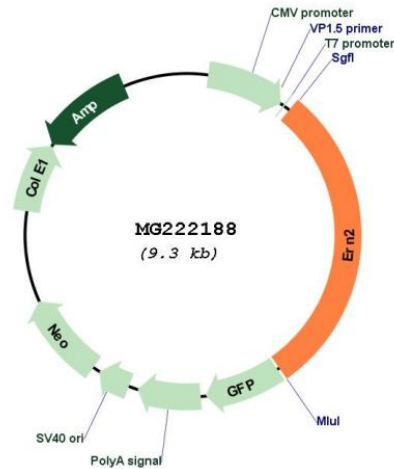
TRTRPLE - GFP Tag - V

Restriction Sites:

Sgfl-MluI

Cloning Scheme:



Plasmid Map:


ACCN: NM_012016

ORF Size: 2733 bp

OTI Disclaimer: The molecular sequence of this clone aligns with the gene accession number as a point of reference only. However, individual transcript sequences of the same gene can differ through naturally occurring variations (e.g. polymorphisms), each with its own valid existence. This clone is substantially in agreement with the reference, but a complete review of all prevailing variants is recommended prior to use. [More info](#)

OTI Annotation: This clone was engineered to express the complete ORF with an expression tag. Expression varies depending on the nature of the gene.

Components: The ORF clone is ion-exchange column purified and shipped in a 2D barcoded Matrix tube containing 10ug of transfection-ready, dried plasmid DNA (reconstitute with 100 ul of water).

Reconstitution Method:

1. Centrifuge at 5,000xg for 5min.
2. Carefully open the tube and add 100ul of sterile water to dissolve the DNA.
3. Close the tube and incubate for 10 minutes at room temperature.
4. Briefly vortex the tube and then do a quick spin (less than 5000xg) to concentrate the liquid at the bottom.
5. Store the suspended plasmid at -20°C. The DNA is stable for at least one year from date of shipping when stored at -20°C.

RefSeq: [NM_012016.2](#), [NP_036146.2](#)

RefSeq Size: 2973 bp

RefSeq ORF: 2736 bp

Locus ID: 26918

UniProt ID: [Q9Z2E3](#)

Cytogenetics: 7 65.53 cM

Gene Summary:

Role in expression of the DDIT3 transcription factor, required for the unfolded-protein response, growth arrest and apoptosis. Has no effect on 28S ribosomal RNA cleavage, unlike the corresponding human protein.[UniProtKB/Swiss-Prot Function]