

## Product datasheet for **MG222153**

### Tns1 (NM\_027884) Mouse Tagged ORF Clone

#### Product data:

**Product Type:** Expression Plasmids  
**Product Name:** Tns1 (NM\_027884) Mouse Tagged ORF Clone  
**Tag:** TurboGFP  
**Symbol:** Tns1  
**Synonyms:** 1110018I21Rik; 1200014E20Rik; AI648117; E030018G17Rik; E030037J05Rik; Tns  
**Mammalian Cell Selection:** Neomycin  
**Vector:** pCMV6-AC-GFP (PS100010)  
**E. coli Selection:** Ampicillin (100 ug/mL)  
**ORF Nucleotide Sequence:** >MG222153 representing NM\_027884  
Red=Cloning site Blue=ORF Green=Tags(s)

TTTTGTAATACGACTCACTATAGGGCGGCCGGAATTCGTCGACTGGATCCGGTACCGAGGAGATCTGCC  
 GCCCGATCGCC

ATGGGCTGCACCGTGAGCCTGGTGTGCTGCGAGGCGCTCGAGCCTCTGCCCTCCTGCGGCCCGCAGCCCC  
 CCGGGACTCCGCCGGGCCCGCGCGGCCCGAGCGCTGTGAGCCCGGGGTGCGGCCCGGACCCGAGGAG  
 GCGGCTGTGCTTCAGCCAGAAGACCTGGAGGCCCAAGACCCACCCTCAAGGTGAAGGCCTTCAAG  
 AAGGTGAAGCCCTGTGGCATCTGCCGCGAGCCATCACTCGGGAAGGCTGTGTTTGCAAAGTCTGCAGT  
 TCTCCTGTATCGAAATGCCAGGCCAAGGTGGCTGCCCTTGCCTTCCCGTCCAGCCATGAAGTGGT  
 GCCCATCACACAGAGACCGTACCAAGAATGTAGTAGATGTGGGGGAAGGAGACTGCCGGTTGGAAGT  
 TCTCCGAAAAACCTGGAGGAGGGCGGCTCCATGAGAGTTTCTCCAAGCATACAGCCACAACCACAATCAC  
 AGCCTACCAGTCTCTAGAAAACACGAGTGTGAGCCGAGCCATGGAAGACAGTTGTGAGCTGGACCTGGT  
 GTATGTACCCGAACGCATCATCGCGTGTCTTCCCTAGCACAGCCAATGAGGAGAACTTCCGCAGCAAC  
 CTCCGTGAAGTGGCTCAGATGTTGAAGTCCAAGCATGGGGCAACTACCTGCTATTCAACCTCTCTGAAC  
 AGAGGCCTGACATACCAAGCTGCATGCTAAGTCTGGAATTCGGCTGGCTGACCTGCACACACCGGC  
 CCTGGAGAAGATATGCAGTGTCTGTAAGCCATGGACACCTGGCTCAATGCAGACCCCAACAATGTCGTT  
 GTTCTCCACAACAAGGAAACCGAGGCAGGATTGGGTTGTCATTGCAGCGTACTGCACTACAGCAACA  
 TTTCCAGCCAGTGTGACCAAGCTCTGGACCGTTTGAATGAAGAGATTCTATGAGGACAAGATCGTGCC  
 CATTGGCCAGCCATCCCAGAGGAGATATGTGCACTACTTCAGTGGCTACTCTCTGGCTCCATCAAATG  
 AACAAAGCCTTTGTTTCTGCATCATGTGATCATGCACGGCATCCCAACTTTGAGTCTAAAGGAGGGT  
 GCCGGCCCTTCTCCGCATCTACCAAGCCATGCAACCTGTGTACACATCTGGCATTACACATCCCTGG  
 AGACAGCCAGGCCAGCATCTGTATCACCATTGAACCAGGGCTGCTCTTGAAGGGAGACATCTTGTGAAG  
 TGTTATCATAAGAAATCCGGAGCCCGGCTCGAGACGTCATCTCCGAGTGCAGTCCACACCTGTGCCA  
 TCCATGACTTGGGGTTGTTTTGGGAAGGAAGATCTGGATGAGGCCTTCAAAGATGATCGATTTCTGTA  
 CTATGGCAAAGTGGAGTTTGTCTTTTCTATGGACCAGAGAAAATCAAGGCATGGAACACCTGGAGAAT



[View online »](#)

GGGCCCAGCGTATCTGTAGACTATAACACTTCTGACCCCCCTCATCCGCTGGGACTCCTATGACAACCTTCA  
 GTGGGCATCGTGAGGATGGCATGGAAGAAGTGGTGGGACACACCCAAGGGCCGCTGGATGGGAGCCTGTA  
 CGCCAAGGTGAAGAAGAAGGATTCCCTGAATGGCAGTTCGGGGCCTGTCACTACTGCACGGCCTGCCCTG  
 TCAGCCACTCCCAACCACGTGGAACACACCCTGTCTGTGAGCAGCGACTCTGGCAACTCCACAGCCTCCA  
 CTAAGACAGACAAGACCGATGAGCCAGTCTCTGGGGCTACCACTGCCCTGCTGCCCTGAGTCTCAGGA  
 GAAGAAAGAGCTGGACCCCTACTAAGTGGCTTTGGTGTGGATAGAGAAAAGCAAGGCACCATGTACCGG  
 GCTCAGCAACTCAGATCCCCTACAGGCGGGGGCCGACTGTGCCCTCCCCTGGCCGCCACATTGTCCCAG  
 CCCAGGTTACGTCAATGGTGGGGCCCTGGCATCTGAGCGGGAGACAGACATTCTAGATGATGAGCTGCC  
 CATCCAGGACGGGACAGAGTGGGGCAGCATGGGAACGCTGTCCTCCCTGGATGGGGTACCACACCCAGT  
 GAAAGTGGCTACCCAGAGACCCTGTCCCCTGACCAATGGCCTGGACAAAACCTATTCCACAGAACCTG  
 TGCTCAACGGCGGAGGCTACCCCTATGAGGCTGCCAACCGGGTATTCTGTCCACAGCAGTCACTCGGC  
 CCCATTCCGACCTCCTACTCTGCTCAGGAGGGTTTAGCTGGCTACCAGCGTGGGGACCCACCCAGCC  
 TGGTCACAGCAAGTGACCAGTCCCCTGTGGCTGTGACCCAGTGGTCTATTAGATCCAGTCCCTTTC  
 CAGATGTGGAGCCCCAGCTGCCCAAGTCCAACCCGTGGGGTGTAGCCGAGAGGCTGTGCAGAGGGG  
 TCTGAATTCATGGCAACAGCAGCAGCCCCACCCACCTCCCGCCAGCAGGAGAGATCCCCACTGCAGAGT  
 CTTGCCCGCAGCAAGCCTAGCCCCAGCTGTGAGCAGAGACCCCGTAGCTGCTCTCCAGAGTTCCCAA  
 GGGCAGCGTCCCAGCAGGAGATCGAGCAGTCCATCGAAACCCCTCAATATGTTGATGCTGGACCTGGAGCC  
 AGCCTCCGCAGCTGCCCTCTTCATAAGTCCCAGAGTGTCCCTGGGGCCTGGCCAGGGGCTTCTCCACTC  
 TTTCCAGCCCCCTTTGGGGTCTTCCCGCAGTCCCACCCACTTACCCAGTCCCAGTCTGGCTATATCC  
 CCAGTGGGCATTCTCTGGGAACCCCGGAGCTGGTCTTCTTGGCAGGCCCTATTACCTTACGATTATCA  
 GCTGCATCCAGCTGGATCCAACCAGAGTTTCCATCCAAAAAGTCCAGCCTTTCACCTTCTTCCAAGC  
 CCTCATAGCTCTCGGGGCCCTCAGGAGCCCCAGCCTCTCTCCCTGGTCTCATCGCTCAGCCCCAGCTCC  
 CACCAAGGAAACTACATCAGATCCCTCCCGAAGTCCAGAGGAAGAGCCGCTGAACCTGGAAGGCTGGT  
 AGCCCATCGGGTAGCAGGGGTTACGGCTCGGGAGAGGCAGCCTGCAGAGCCCCAGGCCCATCCGGAGG  
 CGGGCAGCCAGTGTGGACAGTATGAAAACAGTCTCCGGAGGCCACATCCCCCGTAGTCTGGGGTCC  
 GCTCCCCCGTCCAGTGCCTCTCCCTGAGCTGGCTTTACCATTGCCCTCAATCTGGAGGGCGCCCCAA  
 AGAGCCTCATTTGCATAGCTACAAGGAGGCCTTTGAGGAGATGGAGGGGACCTCCCCAAGCAGCCCCGCA  
 CACAGTGTGGCGCCTCTCCTCCAGGTCTGGCCAAAGACACCCCTGTCTGCTCTGGGCTGAAACCCACA  
 ACCCAGCAGACATCTTGTGCACCCACAGGTGTTGCCAGAAGACTGATCCAGCCAGAGGAAGACGAGGG  
 GGAGGAGTGACTAAGCCTCCAGAAGAGCCCCGGAGCTATGTGGAGTCCGTGGCAGGACAGCGGTGGCA  
 GGGCCTCGAGCTCAGGACGTTGAGCCTAAGAGCTTCAGCGCACCAGCTGCTCAGCCTATGGGCACGAGA  
 CACCCCTGAGGAACGGGACCCCAAGGGGCTCCTTTGTCTCCCGAGCCCCCTCTCCACAAGCAGCCCCAT  
 CCTCAGTGTGACAGCACTTCCGTGGGCAGTTCCCATCAGTGGTGTGAGCAGTACCAGGGTCCCCGGACA  
 CCCTTCCAGCCTATGCTGGACTCCAGCATCCGCTCAGGCAGCTTGGGGCAGCCGAGCCCTGCAGCACTGA  
 GTTATCAGAGCTCCTCGCTGTCCCTGTTGGTGGCAGCAGCTACAACAGCCCTGACTACTCCCTCCAACC  
 ATTCAGCTCTTCTCCAGAAAGCCAAGGCCAGCCACAGTACAGTGCGGCCAGTGTCCACATGGTACCTGGG  
 AGCCCTCAGGCACGACACAGGACAGTGGGTACCAACACTCCACCTAGCCCTGGTTTTGGCCGGGGGGCCG  
 TCAACCCACCATGGCTGCCCTGGTGTCCAGTTTGTAGCCATCGGCAGGTGATGGGTCATCTGGTCC  
 AGGTTTTCCATGGTAACGTGGTTTTCTGGCCACCCAGCCAGTGCAGCTACCACTCCTGGAAGCCCCAGCCTG  
 GGCCGGCACCCAGTGGGAAGCCATCAAGTTCAGGCCTCCACAGCAGTGTGGTACCACCTCCGGGAAGCC  
 CAAGCCTGGGCGACACCCTGGTGGCCACCAAGGGAATCTGGCCTCCAGTCTCCACAGCAATGCAGTCAT  
 CAGCCCTGGGAGCCCAAGCTTGGGCCGGCACCTGGGTGGGTCTGGATCCGTGGTCTGGAAGCCCCAGC  
 TTGGACCCGGCATGCAGCTTATGGTGGCTACTCTACCCCTGAGGACCGAAGACCAACTGTCCCGGCAAA  
 GCAGTGCCTTGCTACCAGGCCCATCCACACCGTATTCCCTGTCTCTCTGCTACTACCCTGGCCT  
 GAGCAGCCCTGCCACCTACCCTCGCCAGACTCAGCAGCCTTCCGGCAGGGGAGCCCCACACCAGCCTTA  
 CCAGAGAAGCGAAGAATGTCAGTGGGAGACCGGGCAGGCAGCCTCCCAACTATGCCACCATCAATGGGA  
 AAGTGTCTTCTCGCCTGTCCGAATGGCATGGCCAGTGGGAGCAGCACCCTCTCCTTCTCTCACACGCT  
 TCCGGACTTTTCTAAGTATTCGATGCCAGACAATAGTCCGGAGACTCGGGCTAAAGTGAAGTTTGTCCAG  
 GACACTTCCAAGTATTGGTACAAGCCTGAGATCTCCAGAGAACAGGCCATCGCACTCCTAAAGGACCAGG  
 AGCCAGGAGCCTTTCATCATCCGGGACAGCCACTCCTTCCGAGGGGCTTATGGGCTGGCCATGAAGGTGTC  
 CTCACCCCTCCAACCATCACTCAGCAGGGCAAGAAAGGAGACATGACCCATGAGCTGGTGGGCACTTT  
 CTGATCGAGACAGGCCCTAGAGGAGTGAAGCTCAAGGGTTGTCCCAATGAGCCAACTTTGGTCCCTTT

CTGCCCTGGTCTATCAGCACTCCGTCATCCCCTGGCCCTGCCCTGTAACTGGTCATTCCAAGCCGAGA  
 CCCACAGATGAATCAAAGATAGCTCAGGCCCTGCCAATCAACCACTGACCTGCTGAAGCAAGGAGCA  
 GCTTGAATGTGCTCTTCGTCAACTCTGTGGATATGGAGTCACTACCGGCCACAGGCCATTTCCAAAG  
 CCACATCTGAGACTCTGGCTGCCGACCCACACCGGCTGCCACCATTTGTTCACTTCAAGGTCTCTGCCCA  
 AGGAATCACACTGACTGACAATCAAAGAAAGCTTTCTTTAGAAGACTACCCCTCAACTGTCCACC  
 TTCTGTGACCTGGATCCACAAGAAAGAAAGTGGATGAAGACAGAGGGAGGCGCCCTGCTAAGCTCTTTG  
 GCTTCGTGGCCCGAAGCAGGGCAGCACCACAGACAACGCTTGCCACCTTTGCGAGAGCTTGACCCCAA  
 CCAGCTGCGTCTGCCATCGTCAACTTCGTCCTCAAGGTATGCTGAGTCTGCCAGAAGAGA

ACGCGTACGCGGCCGCTCGAG - GFP Tag - GTTTAA

**Protein Sequence:**

>MG222153 representing NM\_027884  
 Red=Cloning site Green=Tags(s)

MGTVSLVCEALEPLPSCGPQPPGTPPGPARPERCEPAAAPDRRRLLLPEDLEAPKTHHFVKVAFK  
 KVKPCGICRQAITREGCVCKVCSFSCHRKCQAKVAAPCVPPSSHELVPITTTETVPKNVVDVGECDRVGS  
 SPKNLEEGSMRVSPSIQPPQSQPTSLSRNTSVSRAMEDSCELDLVYVTERIIAVSFPSTANEENFRSN  
 LREVAQMLKSKHGGNYLLFNLSEQRPDITKLHAKVLEFGWPDLHTPALEKICSVCKAMDTWLNADPHNVV  
 VLHNKGNRGRIGVVIAYLHYSNISASADQALDRFAMKRFYEDKIVPIGQPSQRRYVHYFSGLLSGSIKM  
 NNKPLFLHHVIMHGIPNFESKGGCRPFLRIYQAMQPVYTSGIYINIPGDSQASICITIEPGLLLKGDILLK  
 CYHKKFRSPARDVIFRVQFHTCAIHDLVVVFGEKEDLDEAFKDRFPDYGVFVFSYGPEKIQGMEHLEN  
 GPSVSDYNTSDPLIRWDSYDNFSGHREDGMEEVVGHTQGPLDGSLYAKVKKKDSLNGSSGPVTTARPAL  
 SATPNHVEHTLSVSSDSGNSTASTKTDKTDPEVSGATTAPAALSPQEKELDRLLSGFGVDREKQGAMYR  
 AQLRSHPGGGPTVPSGRHIVPAQVHVNGGALASERETDILDDELPIQDQSGGSMGTLSSLDGVTNTS  
 ESGYPETLSPLTNGLDKPYSTEPVLNNGGYPYEAANRIPVHSSHSAIRPSYSAQEGLAGYQREGPHPA  
 WSQQVTSAHCGCDPSGLFRSQSFPDVEPQLPQAPTRGSSREAVQRGLNSWQQQPHPPRQQRSPQLS  
 LARSKPSPQLSAETPVAALPEFPRAASQQEIEQSIETLNLMLDLEPASAAAAPLHKSQSVPGAWPGASPL  
 SSQPLLGSRRQSHPLTQSRSGYIPSGHSLGTPELVSSGRPYSPDYQLHPAGSNQSFHPKSPASSTFLPS  
 PHSSAGPQEPASLPLIAQPQLPPKETTSDPSRTPEEEEPLNLEGLVAHRVAGVQARERQPAEPPGLRR  
 RAASDGQYENQSPEATSPRSPGVRSPVQCVSPELALTIALNPGGRPKEPHLHSYKEAFEEMEGTSPSSPP  
 HSVARSPGLAKTPLSALGLKPHNPADILLHPTGVARRLIQPEEDEGEEVTKPPEEPRSYVESVARTAVA  
 GPRAQDVEPKSFSAHAHAYGHETPLRNGTPGGSFVSPSPLSTSSPILSADSTSVGSFSPVSSDQGPRT  
 PFQPMLDSSIRSGSLGQPSPAALSYQSSSPVPVGGSSYNSPDYSLQPFSSSPESQGPQYSAASVHMVPG  
 SPQARHRTVGTNTPPSPGFGRRAVNPTMAAPGSPSLSHRQVMGSPGPFHGNVVSHPASAATTPGSPSL  
 GRHPVGSQVPLHSSVVTTPGSPSLGRHPGAHQGNLASSLHNSNAVISPSPSLGRHLGGSGSVVPGSPS  
 LDRHAAYGGYSTPEDRRPTLSRQSSASGYQAPSTPSFPVSPAYYPGLSSPATSPSPDSAAFQGSPTPAL  
 PEKRRMSVGDRAGLPNYATINGKVSSSPVANGMASGSSTVSFSHTLPDFSKYSMPDNSPETRAKVKFVQ  
 DTSKYWYKPEISREQAIALLKDQEPGAFIIRDSHSFRGAYGLAMKVSSPPPTITQQGKKGDMTHELVRHF  
 LIETGPRGVKLGCPNEPNFGSLSALVYQHSVIPLALPCKLVIPSRDPTDESKDSSGPANSTTDLLKQGA  
 ACNVLFVNSVDMESLTGPQAISKATSETLAADTPAATIVHFKVSAGGITLTDNQKRLFFRRHYPLNTVT  
 FCDLDPQERKWMKTEGGAPAKLFGFVARKQGSTTDNACHLFAELDPNQPASAIVNFVSKVMSLQAGQR

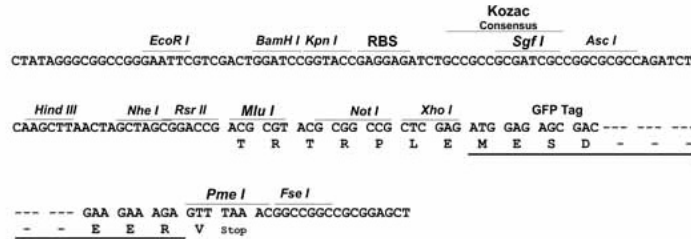
TRTRPLE - GFP Tag - V

**Restriction Sites:**

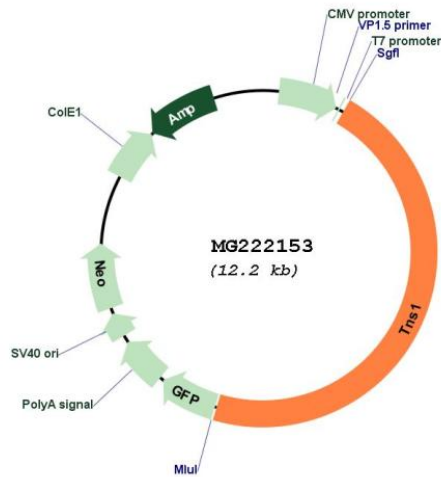
SgfI-MluI

Cloning Scheme:

Cloning sites used for ORF Shutting:



Plasmid Map:



ACCN: NM\_027884  
 ORF Size: 5664 bp

<b>OTI Disclaimer:</b>	The molecular sequence of this clone aligns with the gene accession number as a point of reference only. However, individual transcript sequences of the same gene can differ through naturally occurring variations (e.g. polymorphisms), each with its own valid existence. This clone is substantially in agreement with the reference, but a complete review of all prevailing variants is recommended prior to use. <a href="#">More info</a>
<b>OTI Annotation:</b>	This clone was engineered to express the complete ORF with an expression tag. Expression varies depending on the nature of the gene.
<b>Components:</b>	The ORF clone is ion-exchange column purified and shipped in a 2D barcoded Matrix tube containing 10ug of transfection-ready, dried plasmid DNA (reconstitute with 100 ul of water).
<b>Reconstitution Method:</b>	<ol style="list-style-type: none"><li>1. Centrifuge at 5,000xg for 5min.</li><li>2. Carefully open the tube and add 100ul of sterile water to dissolve the DNA.</li><li>3. Close the tube and incubate for 10 minutes at room temperature.</li><li>4. Briefly vortex the tube and then do a quick spin (less than 5000xg) to concentrate the liquid at the bottom.</li><li>5. Store the suspended plasmid at -20°C. The DNA is stable for at least one year from date of shipping when stored at -20°C.</li></ol>
<b>RefSeq:</b>	<a href="#">NM_027884.4</a>
<b>RefSeq Size:</b>	9966 bp
<b>RefSeq ORF:</b>	5667 bp
<b>Locus ID:</b>	21961
<b>Cytogenetics:</b>	1 38.17 cM