

## Product datasheet for **MG222151**

### Ptprg (NM\_008981) Mouse Tagged ORF Clone

#### Product data:

|                           |   |
|---------------------------|---|
| Product Type:             | Expression Plasmids   |
| Product Name:             | Ptprg (NM_008981) Mouse Tagged ORF Clone                                    |
| Tag:                      | TurboGFP  |
| Symbol:                   | Ptprg   |
| Synonyms:                 | 5430405N12Rik; AW046354; AW549872; RPTPgamma                                |
| Mammalian Cell Selection: | Neomycin  |
| Vector:                   | pCMV6-AC-GFP (PS100010)   |
| E. coli Selection:        | Ampicillin (100 ug/mL)  |
| ORF Nucleotide Sequence:  | >MG222151 representing NM_008981<br>Red=Cloning site Blue=ORF Green=Tags(s) |

TTTTGTAATACGACTCACTATAGGGCGGCCGGAATTCGTCGACTGGATCCGGTACCGAGGAGATCTGCC  
GCC**CGATCGCC**

ATGCGGAGGTTACTGGAACCGTGTGGTGGATTTGTTCCCTGAAAATCACCAGTCTGTGCTTCATTATG  
TGGTGTGCTTCCCGCATTGACTGAAGGCTATGTGGGACCCGCAGGAGAGCAGACAGGACAGCTCAGT  
GCAGATCCGCAGACGAAAGGCATCCGGAGACCCATACTGGGCGTATTCTGGTGCCTATGGTCTGAGCAC  
TGGGTACATCTAGTGTGAGCTGCGGGGCGAGCCATCAGTCTCCTATAGACATTTAGACCACCATGCTC  
GCGTTGGCGATGAATACCAGGAGCTTCACTTGTGGTGGTGGTGGTGGTGGTGGTGGTGGTGGTGGTGGT  
GAAAAATACAGGGAAAACAGTTGCCATCCTGCTGAAAGACGATTATTTGTGAGTGGTGGCAGGACTGCCG  
GGCAGATTCAAAGCTGAGAAGGTGGAGTTTCACTGGGGCCACAGCAATGGCTCCGCTGGCTCAGAGCATA  
GTGTCAATGGCCGGAGGTTTCTGTGGAGATGCAGATTTTCTTTTACAACCCAGACGACTTTGACAGCTT  
TCAAACGGCAATTTCTGAGAACAGAATAATTGGAGCTATGGCCATATTTTCCAAGTCAGTCCGAGGGAC  
AATTCTGCACTGGATCCTATTATCCACGGGCTGAAGGGCGTCTACATCACGAGAAGGAGACTTTCTGG  
ATCCTTTCATTCTCCGAGACCTCCTGCCGCATCCCTGGGGAGTTATTACAGGTACACAGGCTCCTTGAC  
TACGCCACCCTGTAGTGAATAGTGGAGTGGATTGTCTCCGGAGGCCGTTCCCATCTCCTATCACCAG  
CTTGAGCTTTTTATTCTATCTTACCACGGAGCAGCAAGACCATGTCAAGTCAGTGGATACCTGAGAA  
ATAACTTCCGACCACAACAAGCTCTGAATGACAGAGTGGTGTCAAAGTCTGCTGTCCGGGATGCCTGGAA  
CCATGACCTGGCAGACTTCTTGACAACCCACTAGGCACAGAAGCCTCTAAAGTTTGAGCTCTCCGCC  
ATCCACATGAAGGTGCAGCCTCTGAACCAGACAGCTCTGCAGGTGTCTGGAGCCAACTGAAACCATCT  
ACCACCCGCCATCATGAATTACATGATCTCCTATAGCTGGACCAAGAATGAGGACGAGAAGGAGAAGAC  
ATTTACAAAAGACAGTGACAAGGACTTGAAGCCACCATCAGCCATGTCTACCCGATAGCCTTTACCTA  
TTCCGAGTACAGGCTGTGTAGGAATGACATGCGGAGTACTTACGCCAGACAATGCTCTTTCAAGCTA  
ATACTACCCGGATCTTCAAGGGACCAGGATTGTGAAAACAGGAGTGCCGACAGCCTCTCCTGCCTCTT  
AGCAGACATGGCCCCATCAGCTCTGGCTTCCACTTGGACATCCTCCGGCATCCCTTCTCATTGT



[View online »](#)

TCCATGGCAACTGGGATGGGCCCTTCTCCAGTGGCAGCCAAGCTACAGTGGCCTCTGTGGTCACCAGCA  
CACTGTTGGCAGGCTGGGCTTCGGTGGTGGTGGCATCTCCTCCTTCCCCAGTACCGTGTGGCCACGCG  
CCTTCCCACCGCATCTGCAGCCAGCAAGCAGGCAGGGAGGACAGTTCTTGCCACCACCGAGGCCTTAGCT  
TCCCCTGGGCCGGATGTCGACTCGGCACCAGCAAGGACAGCGAGGGTACAGAGGAGGGAGAGAAGGAGG  
AGAAAAGCGAGAGCGAGGATGGTGAAGGAGAGCATGAGGAGGAAGAGAAGGACTCTGAGAAGAAGGAGAA  
GAGTGAGGCTACTCACACAGCCGAGAGAGTACCAGGACTGCACCTGCCCCACCCCTCTTCCCCTCAT  
AGGACTGCAGCGGAGGGAGGACATCAGACTATACCTGGGCGCAGGCAGGACCCTGTGCCCTGCCACAG  
ACCAGCCGGGCCACGTTGCCCCAGACTTGGATCCCCTTGTGGACACAGCCACCCAAGTGCCCCAACAGC  
CACAGAGGAACATTATTACAGGGAGTGATCCCAGGAGGCCGAAATGCCATCTAAAAAGCCTATGTCCCGA  
GGGGACCGATTTTCTGAGGATAGCAAAATTCATCACAGTTAACCCAGCTGAGAAGAACACCTCTGGCATGC  
TAAGCCGCCCTCCCCGGGAGGATGGAGTGGATCATCCCCTGATTGTGGTCTCAGCCTTGACCTTCGT  
GTGCTCGTCTCCTCATTGCCGTGCTGGTGTACTGGAGAGGGTGAACAAAATAAAGTCCAAGGGCTTT  
CCCCGACGTTCCCGTGAAGTGCCTTCTTCTGGGAGAGAGGAGAGAAGGGGAGCAGAAAAATGTTTTAGA  
CTGCTCATTCTATGTGAAGACAGCAGTTCACCTCGGGTGGTCCCCAACGAAAGTTCCTATTATTCC  
CATCCCGATGACATGGAAGCCATTCTGTCAAACAGTTTGGTAAACACATCGGTGAGCTCTATTCCAAT  
AGCCAGCATGGCTTCTCGGAAGATTTTGGGAAGTCCAGCGCTGTACAGCTGATATGAACATCACATGCAG  
AGCATTCCAATCATCCGGATAACAAGCACAAAAACAGATACATCAACATTTTAGCATATGATCACAGTAG  
GGTGAAGTAAAGACCTTACCAGGAAAGGACTCTAAGCACAGCGACTACATTAATGCAAACATATGTCGAT  
GGTTACAACAAAGCGAAAGCCTACATTGCCACCAGGGACCTTTAAAAATCCACCTTTGAAGACTTCTGGA  
GGATGATCTGGGAACAAAACACGGGAATCATCATGATGATCACGAACCTCGTGGAGAAAGGAAGGAGAAA  
GTGTGATCAGTATTGGCCAACGGAGAACACTGAGGAGTACGGGAACATTTGTACACTGAAGAGCACA  
AAAGTACATGCCTGCTACACCGTCCGTCGTCTTTCAGTTAGAAACACAAAAGTAAAAAGGGCCAGAAGG  
GCAACCCAAAGGTCGTCAGAATGAGCGGACGGTGTCCAGTACCACTACACAGTGGCCTGACATGGG  
TGTCCCTGAGTACGCCCTCCAGTCTGACCTTCTGTGAGGAGGTACTCTGCGGCCCGCATGCCAGACATG  
GGGCCCTGTTGGTGCATGACGCGCTGGTGTGGCAGGACAGGCACCTACATTGTAATAGACAGCATGC  
TGCAGCAGATCAAAGACAAAAGCACAGTTAATGTCCTGGGCTTCTGAAGCATATCAGGACACAGAGGAA  
CTACCTCGTCCAGACTGAGGAGCAGTACATTTTCATCCATGATGCCTTGTGGAAGCCATTCTCGGGAAG  
GAAACTGAAGTATCTTCAAGTCAGCTGCATAGCTATGTTAACAGCATCCTCATACCAGGAGTAGGAGGAA  
AGACACGGCTGGAAGCAGTTTAAAGTGCATCAGCAGTGAATGCAAAGTATGTGGAGTCTTCAAGTGC  
CCAGAAGGAGTGAACAAAGAGAAGAACAGGAACCTGCTGTTGTGCCAGCTGAGCGTGCCTGAGTGGGA  
CTTGACCGTTGCCCGGATGAAAGGAACAGATTACATTAATGCTTCTTACATCATGGGGTATTATAGAA  
GCAACGAGTTCATCATAACCCAGCATCCTCTGCCACACTACGAAAGATTTCTGGAGAATGATTTGGGA  
TCATAATGCACAGATCATTGTATGCTGCCAGACAACCAGAGCCTGGCAGAAGATGAGTTTGTGACTGG  
CCGAGTGTGAGGAATCCATGAACTGTGAGGCCTTACTGTACCCCTCATCAGCAAAGACAGGCTATGCC  
TCTCGAATGAAGAACAAATATCATCCATGACTTCATCCTTGAAGCTACACAGGATGACTACGACTAGA  
GGTTCGGCACTTTCAGTGTCCCAATGGCTAACCAGATGCCCTATAAGTGTACCTTCAAGTGCATGATC  
AATGTCATCAAGGAAGAGGCCTTAAACCCGGATGGCCCCACCATTGTTTATGATGAGTATGGAGCAGTTT  
CTGCAGGAATGTTGTGTGCCCTTACCACCTTGTCCAGCAGCTAGAGAATGAAAATGCTGTGGATGTGTT  
CCAGTGGCAAAAATGATCAATCTTATGAGACCTGGAGTATTACAGACATTGAACAATACCAGTTTGTG  
TACAAAGCAATGCTCAGCTTGTATCAGTACTAAAGAAAATGGAAAATGGTCCCATGACCGGGGACAAAACG  
GTGCTGTGCTAACTGCAGAGGAATCAGACCCTGCAGAGCATGGAGTCTCTGGT

ACGCGTACGCGGCCGCTCGAG - GFP Tag - GTTTAA

Protein Sequence: >MG222151 representing NM\_008981  
 Red=Cloning site Green=Tags(s)

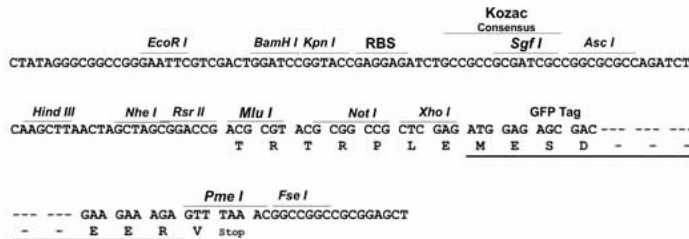
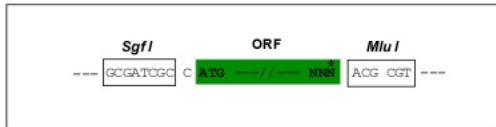
MRRLLPCWWILFLKITSSVLHYVVCFPALTEGYVGLQESRQDSSVQIRRRKASGDPYWAYSGAYGPEH  
 WVTSSVSCGGSHQSPIDILDHHRVGDYQELQLDGFDNESNKTWMKNTGKTVAILLKDDYFVSGAGLP  
 GRFKAEKVEFWGHSNGSAGSEHSVNGRRFPVEMQIFFYNPDDFDSFQTAISENRIIGAMAIFFQVSPRD  
 NSALDPIIHGLKGVVHHEKETFLDPFILRDLLPASLGSYYRYTGSLLTPPCSEIVEWIVFRRPVPISYHQ  
 LEAFYSIFTTEQQDHVKSVEYLRNNFRPQQALNDRVVSASVRDAWNHDLADFLDNPLGTEASKVCSPP  
 IHMKVQPLNQALQVSWSQPETIYHPPIMNYMISYSWTKNEDEKEKFTTKDSDKDLKATISHVSPDSL  
 YLFRVQAVCRNDRSDFQTMFLQANTTRIFQGRIVKTVPTASPASSADMAPISSGSSTWTSSGIPFSV  
 SMATGMPSSSGSQTAVASVVTSTLLAGLFGGGGISSFPSTVWPTRLPTASAASKQAGRTVLATTEALA  
 SPGPDVDSAPTQDSEGEKEEKESESEGEREHEEEEEKSEKKEKSEATHAAESDRTAPAPTSSPH  
 RTAAEGGHQTIQRRQDHSAPATDQPGHVAPDLPLVDTATQVPPTATEEHYSGDPRRPEMPSKKPMSR  
 GDRFSEDSKFITVNPAAKNTSGMLSRPSPGRMEWIPLIVVSALTFVCLVLLIAVLVYWRGNKIKSKGF  
 PRRSREVPSSGERGKSRKCFQTAHFYVEDSSSPRVVNPESVPIPIPDMEAIIPVKQFGKHIGELYSN  
 SQHGFSDFEEVQRCTADMNITAEHSNHPDNKHKNRYINILAYDHSRVKLRPLPGKDSKHSYINANYVD  
 GYNKAKAYIATQGPLKSTFFEDFWRMIWEQNTGIIIMITNLVEKGRRKCDQYWPTEENTEEYGNIIIVTKST  
 KVHACYTVRRLSVRNTKVKKGQKGNPKGRQNERTVIQYHYTQWPDGMVPEYALPVLTFVRRSSAARMPDM  
 GPVLVHCSAGVGRGTGYIVIDSMLQQIKDKSTVNVLGLFKHIRTQRNYLVQTEEQYIFIHDALLEAILGK  
 ETEVSSSQLHSYVNSILIPGVGGKTRLEKQFKLITQCNAYVECFSAQKECNKEKNRNSVVPAAERAVG  
 LAPLPGMKGTDIYINASYIMGYYRSNEFIITQHPLPHTTKDFWRMIWDHNAQIIVMLPDNQLSAEDEFVYV  
 PSREESMNCEAFVTLISKDRLCLSNEEQIIIHDFILEATQDDYVLEVRHFQCPKWPNDAPISSTFELI  
 NVIKKEALTRDGPTIVHDEYGAVSAGMLCALTTLSQQLENENAVDVFQVAKMINLMRPGVFTDIEQYQFV  
 YKAMLSLISSTKENGNGPMTGDKNGAVLTAESDPAESMESLV

TRTRPLE - GFP Tag - V

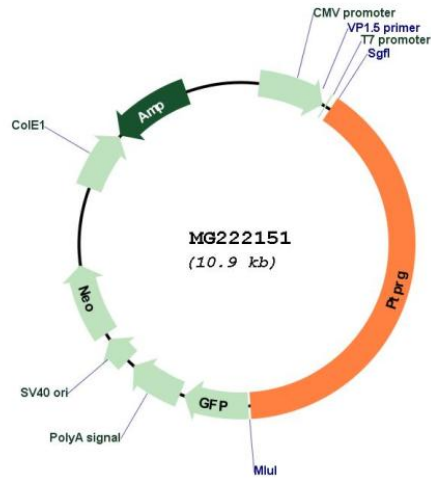
Restriction Sites: SgfI-MluI

Cloning Scheme:

Cloning sites used for ORF Shuttling:



Plasmid Map:



**ACCN:** NM\_008981

**ORF Size:** 4326 bp

**OTI Disclaimer:** The molecular sequence of this clone aligns with the gene accession number as a point of reference only. However, individual transcript sequences of the same gene can differ through naturally occurring variations (e.g. polymorphisms), each with its own valid existence. This clone is substantially in agreement with the reference, but a complete review of all prevailing variants is recommended prior to use. [More info](#)

**OTI Annotation:** This clone was engineered to express the complete ORF with an expression tag. Expression varies depending on the nature of the gene.

**Components:** The ORF clone is ion-exchange column purified and shipped in a 2D barcoded Matrix tube containing 10ug of transfection-ready, dried plasmid DNA (reconstitute with 100 ul of water).

**Reconstitution Method:**

1. Centrifuge at 5,000xg for 5min.
2. Carefully open the tube and add 100ul of sterile water to dissolve the DNA.
3. Close the tube and incubate for 10 minutes at room temperature.
4. Briefly vortex the tube and then do a quick spin (less than 5000xg) to concentrate the liquid at the bottom.
5. Store the suspended plasmid at -20°C. The DNA is stable for at least one year from date of shipping when stored at -20°C.

**RefSeq:** [NM\\_008981.3](#), [NP\\_033007.2](#)

**RefSeq Size:** 9190 bp

**RefSeq ORF:** 4329 bp

**Locus ID:** 19270

**UniProt ID:** [Q05909](#)

**Cytogenetics:** 14 6.33 cM

**Gene Summary:** Possesses tyrosine phosphatase activity.[UniProtKB/Swiss-Prot Function]