

## Product datasheet for **MG222137**

### **Myl6b (NM\_172259) Mouse Tagged ORF Clone**

#### Product data:

**Product Type:** Expression Plasmids  
**Product Name:** Myl6b (NM\_172259) Mouse Tagged ORF Clone  
**Tag:** TurboGFP  
**Symbol:** Myl6b  
**Synonyms:** 5730437E04Rik; BC037527; MLC1SA  
**Mammalian Cell Selection:** Neomycin  
**Vector:** pCMV6-AC-GFP (PS100010)  
**E. coli Selection:** Ampicillin (100 ug/mL)  
**ORF Nucleotide Sequence:** >MG222137 representing NM\_172259  
 Red=Cloning site Blue=ORF Green=Tags(s)

TTTTGTAATACGACTCACTATAGGGCGCCGGGAATTCGTCGACTGGATCCGGTACCGAGGAGATCTGCC  
 GCC**CGATCGCC**

ATGCCTCCCAAGAAGGATGCTCCCGTGAAGAAACCAGCAGGGCCCTCCATCTCTAAGCCTGCTGCCAAGT  
 CTACACCGAGGGACCCCTCTAGCCAAGGCCAAGGCTGAGCCGGCTGCCCCAGGCACCTGCAAAATCCCA  
 GGAGCCCCCTGTTGATCTCTCAAAGTGGTATCGAGTTAACAAGGACCAGCTGGAGGAATTCAGAGAG  
 GCCTTTGAGCTGTTTGACCGAGTAGGTGATGGCAAGATCCTGTACAGCCAGTGTGGGGACCTGATGAGGG  
 CCCTGGGCCAGAACCCTACCAACGCCGAGGTGCTCAAGGTCTGGGGAACCCAAAAACGAGGAGCTGAA  
 GTCCCGACGTGTAGACTTTGAGACGTTCCCTGCCATGCTGCAGGCAGTGGCCAAGAACCGGGACCAAGGC  
 ACATATGAGGACTACCTAGAGGGGCTTCGTGTGTTTGACAAAGAGGGCAACGGCAAGGTCATGGGTGCAG  
 AGCTCAGACATGTTCTTACCACTCTCGGAGAGAAGATGACTGAGGAAGAGGTAGAGACTGTTCTGGCAGG  
 CCACGAGGACAGCAACGGCTGCATCAACTATGAGGCCTTCTGAAGCATATCCTAAGCCTC

**ACGCGTACGCGGCCGCTCGAG** - GFP Tag - GTTTAA

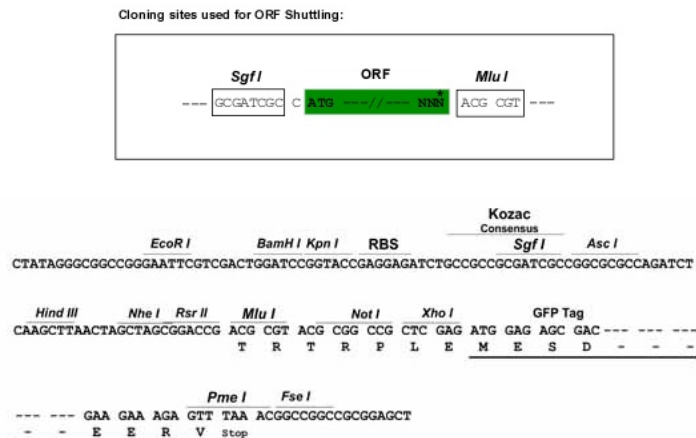
**Protein Sequence:** >MG222137 representing NM\_172259  
 Red=Cloning site Green=Tags(s)

MPPKKDAPVKKPAGPSISKPAAKSTPGTPLAKAKAEPAPQAPAKSQEPPVDLSKVVIIEFNKDQLEEFRE  
 AFELFDRVGDGKILYSQCGDLMRALGQNPTNAEVLKVLGNPKNEELKSRRVDFETFLPMLQAVAKNRDQG  
 TYEDYLEGLRVFDKEGNGKVMGAELRHVLTTLGEKMTTEEVETVLAGHEDSNGCINYEAFKHLISL

**TRTRPLE** - GFP Tag - V

**Restriction Sites:** Sgfl-MluI



**Cloning Scheme:**


**ACCN:** NM\_172259

**ORF Size:** 621 bp

**OTI Disclaimer:** The molecular sequence of this clone aligns with the gene accession number as a point of reference only. However, individual transcript sequences of the same gene can differ through naturally occurring variations (e.g. polymorphisms), each with its own valid existence. This clone is substantially in agreement with the reference, but a complete review of all prevailing variants is recommended prior to use. [More info](#)

**OTI Annotation:** This clone was engineered to express the complete ORF with an expression tag. Expression varies depending on the nature of the gene.

**Components:** The ORF clone is ion-exchange column purified and shipped in a 2D barcoded Matrix tube containing 10ug of transfection-ready, dried plasmid DNA (reconstitute with 100 ul of water).

**Reconstitution Method:**

1. Centrifuge at 5,000xg for 5min.
2. Carefully open the tube and add 100ul of sterile water to dissolve the DNA.
3. Close the tube and incubate for 10 minutes at room temperature.
4. Briefly vortex the tube and then do a quick spin (less than 5000xg) to concentrate the liquid at the bottom.
5. Store the suspended plasmid at -20°C. The DNA is stable for at least one year from date of shipping when stored at -20°C.

**RefSeq:** [NM\\_172259.1](#), [NP\\_758463.1](#)

**RefSeq Size:** 1053 bp

**RefSeq ORF:** 624 bp

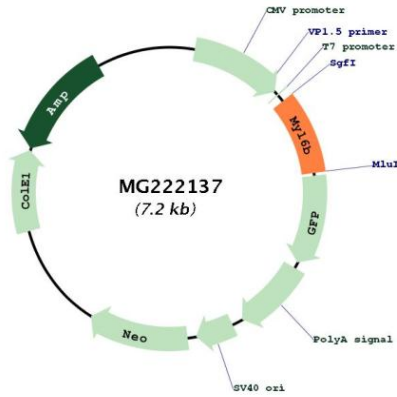
**Locus ID:** 216459

**UniProt ID:** [Q8CI43](#)

**Cytogenetics:** 10 D3

**Gene Summary:** Regulatory light chain of myosin. Does not bind calcium.[UniProtKB/Swiss-Prot Function]

**Product images:**



Circular map for MG222137