

## Product datasheet for **MG222136**

### **Hsph1 (NM\_013559) Mouse Tagged ORF Clone**

#### **Product data:**

Product Type:	Expression Plasmids
Product Name:	Hsph1 (NM_013559) Mouse Tagged ORF Clone
Tag:	TurboGFP
Symbol:	Hsph1
Synonyms:	105kDa; AI790491; hsp-E7I; Hsp105; Hsp110; hsp110/105
Mammalian Cell Selection:	Neomycin
Vector:	pCMV6-AC-GFP (PS100010)
E. coli Selection:	Ampicillin (100 ug/mL)



[View online »](#)

**ORF Nucleotide Sequence:**

>MG222136 representing NM\_013559  
 Red=Cloning site Blue=ORF Green=Tags(s)

TTTTGTAATACGACTCACTATAGGGCGGCCGGGAATTCGTCGACTGGATCCGGTACCGAGGAGATCTGCC  
 GCC**CGGATCGCC**

ATGTCGGTGGTTGGGCTAGACGTAGGCTCACAGAGCTGCTACATTGCGGTGGCGCGGCCGGGGGCATCG  
 AGACCATCGCAACGAGTTCAGCGACCGCTGCACCCCGTCAGTCATATCATTGGATCAAAAAACAGAAC  
 AATTGGAGTTGCAGCAAAAAACAGCAAATCACTCATGCAAAACAATACGGTCTCTAGCTTTAAGAGATTT  
 CATGGCAGAGCATTCAATGACCCCTTCATTGAGAGGAAAAGGAGAACCCTGAGCTATGATTTGGTCCCAA  
 TGAAAAATGGTGGCGTGGGAATAAAGGTCATGTACATGGATGAAGAACATTTCTTCAGTGTGGAGCAGAT  
 AACAGCCATGCTGCTGACTAAGTAAAGGAAAACGCAGAAAACAACCTCAAGAAGCCAGTGACAGACTGT  
 GTCATCTCAGTCCCATCCTTCTCACAGATGCTGAGCGAAGGTCTGTGCTGGATGCTGCGCAGATTTGGG  
 GCTTGAAGTCTTGGCGCTCATGAATGACATGACGGCTGTTGCTTTGAATTATGGGATTTATAAGCAAGA  
 TCTCCCGAATGCCGAGGAGAAGCCACGGGTGGTGGTGTGTTGTTGACATGGGACACTCATCTTTCCAAGT  
 TCTGCCTGTGCTTTTAAACAAAGGAAAACGAAGTTCTAGGCACAGCTTTTGATCCCTTCTTAGGAGGAA  
 AGAACTTTGATGAGAAGCTAGTAGAACATTTTTGTGCTGAATTTAAAACCAAGTACAAATTTGGATGCAAA  
 ATCCAAAATTCGAGCCCTCCTTCGTCCTCATCAGGAGTGTGAAAAGTTGAAAAGCTCATGAGTTCTAAC  
 AGCACGGACCTGCCGCTGAACATCGAGTCTTTATGAATGACAAGGATGTCTCTGGGAAGATGAACAGGT  
 CACAGTTTGAAGAACTGTGTGCTGAGCTCCTGCAAAAAATAGAGGTCCCCTTCACTCGTTGATGGCACA  
 GACTCAGCTCAAGGCTGAAGATGTGAGTGCCATTGAGATAGTGGGAGGTGCCACAAGAATCCCAGCTGTG  
 AAAGAAAGAATTGCCAAGTCTTTGGAAAAGATGTCAGCACCACGCTCAATGCAGACGAAGCTGTGGCCA  
 GAGGCTGTGCACTGCAGTGTGCAATTTCTTCCGGCATTTAAAGTTAGAGAGTTCTCTGACCCAGTGG  
 AGTTCCTTTTCCAATATCTCTGGTCTGGAACACGACTCGGAAGAAACGGAAGGTGTGCACGAGGTGTT  
 AGTCGGAACCATGCTGCTCCTTTCTCAAAGTGTCTCACCTTCTGAGAAGGGGGCCCTTTGAGCTAGAAG  
 CTTTCTATTCTGACCCTCAAGGAGTTCATATCCAGAAGCAAAAAAGGCCGTTTTGTTGTTGAGAAATGT  
 TTCTGCACAGAAAGATGGAGAGAAGTCGAGAGTGAAGGTCAAAGTGCCTGTGAACACACATGGCATCTTC  
 ACCATCTCCACGGCTTCCATGGTGGAGAAGTCCCAGCCGAGGAAGAGGATGGCTCCTCTCGAGGCAG  
 ACATGGAATGTCAAACCCAGAGGCCAACAGAAAGCTCGGATGTGGATAAAAAATCCAGCAAGACAACAG  
 TGAAGCTGGAACACAGCCCCAGTACAACTGATGGTCAACAAACCTCACAGTCTCCCCCTTACCTGAA  
 CTTACCTCAGAAGAAAGCAAAACCCAGATGCTGACAAAGCAAAATGAAAAGAAAGTTGATCAGCCTCCAG  
 AAGCCAAGAAACCTAAAATAAAGGTGGTAAATGTTGAGCTGCCTGTAGAAGCCAACCTGGTATGGCAGTT  
 AGGGAGAGACCTTCTAACATGTATATTGAGACAGAGGGCAAGATGATCATGCAAGACAAGCTGGAGAAG  
 GAGCGGAACGACGCCAAGAACCGCTGGAGGAGTGTGTATATGAGTTCAGGGACAAGCTATGTGGACCAT  
 ATGAGAAATTCATATGTGAGCAGGAACATGAGAAGTCTTGGAGCTTCTAACAGAGACGGAAGACTGGCT  
 GTATGAGGAAGGGGAGGACCAGGCTAAGCAGGCATACATTGACAAGTTGGAAGAGCTGATGAAAATGGGC  
 ACTCCTGTTAAAGTCAGATTTCAAGAAGCTGAGGAACGACCGAAAGTGTGGAGGAGCTGGGGCAGCGCC  
 TGCAGCACTATGCCAAGATTGCAGCGGACTTCAGAGGCAAGGATGAGAAATACAACCACATTGATGAATC  
 AGAAATGAGAAGGTTGAGAAGTCTGTTAATGAGGTGATGGAGTGGATGAATAATGTCATGAATGCTCAG  
 GCTAAAAGAAGTCTTGATCAAGACCCTGTTGTTGCGAACTCATGAAATCAGAGCGAAGGTCAAGGAATTGA  
 ACAATGTTTGTGAACCTGTTGTAACCAACCAAAAAATCGAGTCACTAACTGGAGAGAAGTCC  
 AAATGGCCCAAATATTGACAAGAAAGAAGATTTAGAAGGCAAAAAATATCTTGGTGTGAAGCTCCGCAT  
 CAGAATGGTGAATGCCACCCTAATGAGAAGGGCTCTGTCAACATGGACCTGGAC

**ACCGTACGCGGCCGCTCGAG** – GFP Tag – GTTTAA

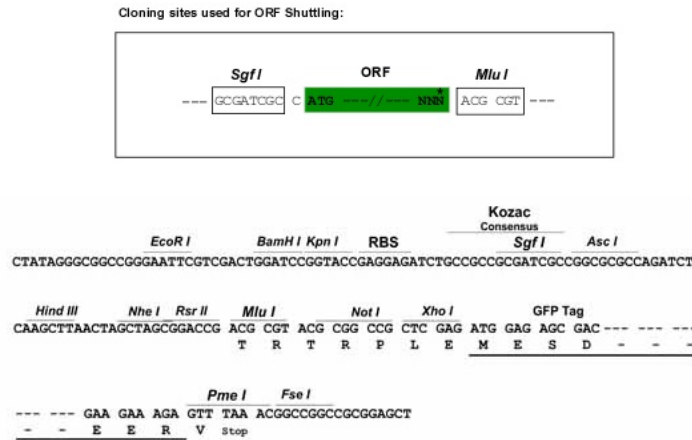
**Protein Sequence:** >MG222136 representing NM\_013559  
 Red=Cloning site Green=Tags(s)

```
MSVVGLDVGVSQSCYIAVARAGGIETIANEFSDRCTPSVISFGSKNRTIGVAAKNQQITHANNTVSSFKRF
HGRAFNDFPIQKEKENLSYDLVPMKNGGVGKVMYMDDEEHFFSVEQITAMLLTKLKETAENLKKPVTDC
VISVPSFFTD AERRSVLDAAQIVGLNCLRLMNDMTAVALNYGIYKQDL PNAEEKPRVVVFVDMGHSSFQV
SACAFNKGKLVLTAFDPFLGGKNFDEKLV EHFCAEFKTKYKLD AKSKIRALLRLHQECEK LKLMSSN
STDLP LNIECFMNDKDVSGKMNR SQFEELCAELLQKIEVPLHSLMAQTQLKAEDVSAIEIVGGATRIPAV
KERIAKFFGKDVSTTLNADEAVARGCALQCAILSPAFKVREFSVTDAVPFPI SLVWNHDSEETEGVHEVF
SRNHAAPFSKVL TFLRRGPFELEAFYSDPQGVPYPEAKIGRFV VQNVSAQKDGEKSRVKVVRVNTHGIF
TISTASMVEKVPTEEDGSSLEADMECPNQRPTESSDVDKNIQQDNSEAGTQPQVQTDGQQTSQSPPSPE
LTSEESKTPDADKAN EKKVDQPPEAKPKIKVVNVELPVEANL VWQLGRDLLNMYIETEGKMIMQDKLEK
ERNDAKNAVEECVYEF RDKLCGPYEKFICEQEHEKFLRLLTETEDWLYEEGEDQAKQAYIDKLEELMKMG
TPVKVRFQEAERPKVLEELGQRLQHYAKIAADFRGKDEKYNHIDESEMKKVEKSVNEVMEWMNNVMNAQ
AKRSLDQDPVVR THEIRAKVKELNNVCEPVVTQPKPKIESPKLERTPNGPNIDKKEDLEGKNNLGAEAPH
QNGECHPNEKGSVNMDLD
```

TRTRPLE - GFP Tag - V

**Restriction Sites:** Sgfl-MluI

Cloning Scheme:



ACCN: NM\_013559

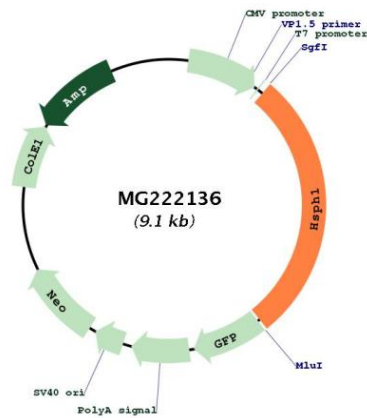
ORF Size: 2574 bp

OTI Disclaimer: Due to the inherent nature of this plasmid, standard methods to replicate additional amounts of DNA in E. coli are highly likely to result in mutations and/or rearrangements. Therefore, OriGene does not guarantee the capability to replicate this plasmid DNA. Additional amounts of DNA can be purchased from OriGene with batch-specific, full-sequence verification at a reduced cost. Please contact our customer care team at [custsupport@origene.com](mailto:custsupport@origene.com) or by calling 301.340.3188 option 3 for pricing and delivery.

The molecular sequence of this clone aligns with the gene accession number as a point of reference only. However, individual transcript sequences of the same gene can differ through naturally occurring variations (e.g. polymorphisms), each with its own valid existence. This clone is substantially in agreement with the reference, but a complete review of all prevailing variants is recommended prior to use. [More info](#)

<b>OTI Annotation:</b>	This clone was engineered to express the complete ORF with an expression tag. Expression varies depending on the nature of the gene.
<b>Components:</b>	The ORF clone is ion-exchange column purified and shipped in a 2D barcoded Matrix tube containing 10ug of transfection-ready, dried plasmid DNA (reconstitute with 100 ul of water).
<b>Reconstitution Method:</b>	<ol style="list-style-type: none"> <li>1. Centrifuge at 5,000xg for 5min.</li> <li>2. Carefully open the tube and add 100ul of sterile water to dissolve the DNA.</li> <li>3. Close the tube and incubate for 10 minutes at room temperature.</li> <li>4. Briefly vortex the tube and then do a quick spin (less than 5000xg) to concentrate the liquid at the bottom.</li> <li>5. Store the suspended plasmid at -20°C. The DNA is stable for at least one year from date of shipping when stored at -20°C.</li> </ol>
<b>RefSeq:</b>	<u><a href="#">NM_013559.2</a></u> , <u><a href="#">NP_038587.2</a></u>
<b>RefSeq Size:</b>	3478 bp
<b>RefSeq ORF:</b>	2577 bp
<b>Locus ID:</b>	15505
<b>UniProt ID:</b>	<u><a href="#">Q61699</a></u>
<b>Cytogenetics:</b>	5 89.18 cM
<b>Gene Summary:</b>	Acts as a nucleotide-exchange factor (NEF) for chaperone proteins HSPA1A and HSPA1B, promoting the release of ADP from HSPA1A/B thereby triggering client/substrate protein release (By similarity). Prevents the aggregation of denatured proteins in cells under severe stress, on which the ATP levels decrease markedly. Inhibits HSPA8/HSC70 ATPase and chaperone activities (PubMed:14644449, PubMed:15292236).[UniProtKB/Swiss-Prot Function]

**Product images:**



Circular map for MG222136