

## Product datasheet for **MG222121**

### Adgrg2 (NM\_001079857) Mouse Tagged ORF Clone

#### Product data:

Product Type:	Expression Plasmids
Product Name:	Adgrg2 (NM_001079857) Mouse Tagged ORF Clone
Tag:	TurboGFP
Symbol:	Adgrg2
Synonyms:	AW212196; B830041D06Rik; Gpr64; Me6
Mammalian Cell Selection:	Neomycin
Vector:	pCMV6-AC-GFP (PS100010)
E. coli Selection:	Ampicillin (100 ug/mL)



[View online »](#)

**ORF Nucleotide Sequence:**

>MG222121 representing NM\_001079857  
 Red=Cloning site Blue=ORF Green=Tags(s)

TTTTGTAATACGACTCACTATAGGGCGGCCGGGAATTCGTCGACTGGATCCGGTACCGAGGAGATCTGCC  
 GCC**CGCATCGCC**

ATGCTTTTCTCTGGTGGGCAGTACAGCCCTGTTGGCAGACCTGAAGAGGTTTTACTGATATACAAGATAT  
 TCCTTGTCATCATTTGTTTTTCATGTCATTCTCGTTACATCCCTGAAAGAAAACGGTAATCCAGTTTGTT  
 ATCACCATCTGCTGAATCATCTCTTGTGTCAGTCTCATCCCCACTCCAATGGTACACCAGATGCTGCTTCA  
 GAAGTTTTGTCGACTTTAAACAAAACAGGAGTCAAATCCCAGAGAAAATCTGCAATTTGTCATCTCTTT  
 GCAATGACTCAGTATTTTTAGAGGTGAGATAGTGTTC AACATGATGAAGACCACAATGTTACCCAGAA  
 TCAAGATACAGCTAATGGCACCTTCGCTGGAGTCTGTCTCTAAGTGAAGTGAAGCGATCAGAGCTCAAC  
 AAAACTCTACAGACCTTAAAGTGAAGTACTTTATAGTGTGTGCTACAGCAGAGGCCAAAGCACGGTAA  
 ACTGTACATTCACAGTAAACTCAATGAGACCATGAATGTGTGTGCCATGATGGTACTTTCCAAACTGT  
 ACAGATTCGGCCAAATGGAACAGTGTGCTGTTCCCGGAGGACTCCCTGCCCTTCCCTACCCAGAAGAGTTA  
 GAAAACTACAGTGTGAAGTGCAGGATCCCATTTGTCTGTCTTGCTGATCAACCGCATGGCCACCGTTAT  
 CGTCTTCCAGCAAGCCTGTTGTACCTCAGGCCACCATTATTTCCCATGTTGCTAGTGACTTCTCTTTGGC  
 TGAACCCCTTGATCATGCCCTTATGACCCCAAGCACACCCTCTCTGACACAAGAAAGTAACCTTCCATCT  
 CCTCAGCCTACGATCCCCCTGGCTTCCAGTCTGCCACTGACTTGCCAGTTCAATCTGTAGTGGTCTCTT  
 CTTTGCCTCAAATGATCTTTCCACACCCCTGTACCCGGTGCAGTCTCCATTCCCTCTCTACCCACACC  
 AGCCCCATCTGTCCCTACAGAACTGGTCACCATCAGCACACCTCCTGGTGAGACAGTTGTCAACACTAGC  
 ACTGTTTCTGATCTGGAAGCCCAAGTATCCAGATGGAGAAAGCTTTGTCTTTGGGTAGCTTAGAGCCTA  
 ATCTTTCAGGCGAAATGGTAAACCGAGTCAGCAAACCTTCACTCTCCACCTGCCTTAGCCCTCT  
 AGCTCAAAGGTTGCTAAAAGTGGTAGATGCCATTGGCTTACAGCTGAATTTTTTCATCTACAACATCAGT  
 CTAACCTCACCTTCTTTGGCTCTTGTGTGATCAGAGTGAATGCCAGTAATTTCAATACCCAGACTTTTG  
 CAGCCCAAGACCAACAAATCTCCAGGTTTCTCTGAAACCCACCTCCTGAGAATAGTATTGGTGCCAT  
 TACTCTGCCCTCATCACTGATGAATAATTTGCCAGCTAATGATGTAGAATTGGCTTCAAGGATTCAGTTC  
 AATTTCTTTGAAACACCCGCCCTGTTTCAGGATCCTTCCCTGGAGAACCTCACTCTGATAAGCTATGTCA  
 TATCATCAAGTGTCAAAACATGACCATCAAGAACTTGACAAGAAACGTGACAGTCGCACTGAAACACAT  
 CAACCAAGTCCGGATGACTTAACTGTAAATGTGATTTCTGGGACTTGGCAGAAATGGTGCCAAAGGA  
 GGTGGTCTATCTGATGGCTGTTCCGTCAAAGACAAGAGAATGAATGAAACCATCTGTACCTGTAGCCATC  
 TTACAAGTTTTGGCATCCTATTGGACCTATCTCGAACATCCTTACCACCAAGTCAAATGATGGCTCTGAC  
 ATTTATACAGTATATTGGCTGTGGGCTTTCATCAATTTTTCTGTGCACTTCTTGTAACTACATCGCC  
 TTTGAAAAGATCCGGAGGGATTACCCCTCCAAAATCCTCATCCAGCTGTGTGCTGCCCTGCTTCTGCTCA  
 ACCTGATCTTCTCTAGACTCCTGGATTGCGCTGTATAATACCCGAGGTTTCTGCATTGCCGTGGCTGT  
 ATTTCTTCACTATTTTCTTGGTCTCATTACATGGATGGGATTAGAAGCATTCCACATGTACCTAGCA  
 CTGGTCAAGGTGTTTAACTTACATCCGAAAGTACATCCTTAAATCTGCATTGTTGGCTGGGGCATA  
 CAGCTGTGGTTGTGTCATCGTCTGACTATATCCCAGATAACTATGGGATTGGATCCTATGAAAAAT  
 CCCAATGGCACACCAGATGACTTTTGTGGTCAACAGCAATGGTGTCTATATCACGTTTGTGGGA  
 TATTTCTGTGTGATATTTCTACTGAACGTGAGCATGTTTATCGTGGTCTTGGTTACGCTCTGTGCAATTA  
 AAAAGAAGAAGCAGCTGGGAGCCAGCGCAAAACTAGTATTCAAGACCTCAGGAGTATCGTGGCCCTCAC  
 ATTTTTACTGGGAATTACTTGGGGCTTTGCCTTCTTGCCTGGGGACCAGTTAATGTACCTTATGTAT  
 CTCTTTGCCATCTTAAACACCTTACAAGGGTTTTTCATATTCATTTTTTACTGTGCGACAAAAGAGAATG  
 TCAGAAAACAGTGGAGGCGGTATCTTTGTTGTGGAAAATTACGGTGGCTGAAAATCTGACTGGAGTAA  
 AACTGCTACTAATGGTTTAAAGAAGCAGACTGTAAACCAAGGAGTATCCAGCTCTCAAATTCCTTACAG  
 TCAAGCTGTAACCTCACTAACTCCACCACACTCCTAGTGAATAGTATTGCTCAGTGCACGCAAGCGGGA  
 ATGGCAATGCATCTACCGAGAGGAATGGGGTTTCTTTCAGTGTTCAGAATGGAGACGTGTGCTTATGTA  
 TCTCACTGGCAAACAGCATATGTTTAGTGACAAAGAGGACTCCTGCAATGGTAAAAGCCGGATAGCGCTC  
 AGAAGGACTTCGAAGCGGGGAAGCTTACTTTATCGAGCAAATG

**ACGCGT**ACGCGGCCGCTCGAG - GFP Tag - GTTTAA

**Protein Sequence:** >MG222121 representing NM\_001079857  
 Red=Cloning site Green=Tags(s)

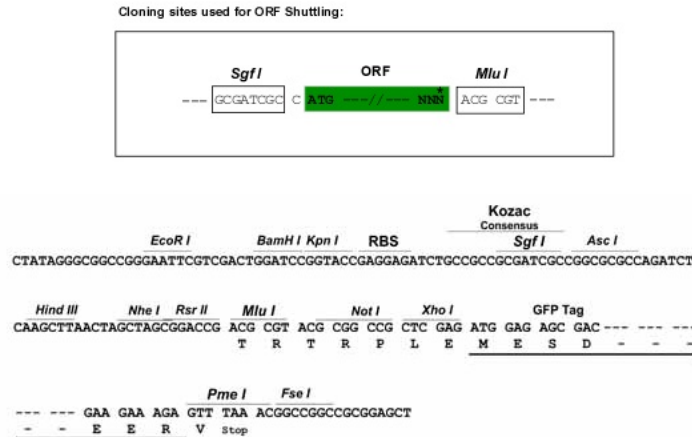
MLFSGGQYSPVGRPEEVLLIYKIFLVIICFHVILVTSKENGSSLLSPSAESSLVSLIPYSNGTPDAAS  
 EVLSTLNKTGVKSQRNICNLSSLCNDSVFRGEIVFQHDHNVTONQDTANGTFAGVLSLSELKRSELN  
 KTLQTLSEYFIVCATAEAQSTVNCTFTVKLNETMNVCAMMVFQTVQIRPMEQCCSPRTPCSPSSPEEL  
 EKLQCELQDPIVCLADQPHGPPLSSSSKPVVPQATIISHVASDFSLAEPLDHALMTPSTPSLTQESNLPS  
 PQPTIPLASSPATDLPVQSVVVSSLPQTDLSHTLSPVQSSIPSPTTPAPSVPTLVTISTPPGETVVNTS  
 TVSDLEAQVSQMEKALSLSLEPNLAGEMVNRVSKLLHSPALLAPLAQRLLKVVDIAIGLQNFSSSTTIS  
 LTSPSLALAVIRVNASNFNTTFAAQDPTNLQVSLTPPPENSIGAITLPSSLMNNLPANDVELASRIQF  
 NFFETPALFQDPSLENLTLISYVSSSVTNMTIKNLTRNVTVALKHINPSPDDLTVKCVFWDLGRNGGKG  
 GWSSDGC SVKDKRMNETICTCSHLTSFGILLDL SRTSLPPSQMMALTFITYIGGLSSIFLSVTLVTYIA  
 FEKIRRDYPSKILIQCAALLLNLIIFLLDSWIALYNTRGFCIAVAVFLHYFLLVSFTWMGLEAFHMYLA  
 LKVFNTYIRKYILKFCIVGWGIPAVVVSIVLTI SPDNYGIGSYGKFPNGTPDDFCWINSNVVFIYIVVG  
 YFCVIFLLNVSMFIVVLVQLCRIKKKKQLGAQRKTSIQDLRSIAGLTFLLGITWGF AFFAWGPVNVTFMY  
 LFAIFNTLQGGFFIFIFYCAAKENVRKQWRRYLCCGKLR LAENSDWSKTATNGLKKQT VNVQGVSSSSNSLQ  
 SSCNSTNSTLLVNSDCSVHASGNNGASTERNGVSVQNGDVCLHDLTGKQHFSDKEDSCNGKSRIAL  
 RRTSKRGLHFIEQM

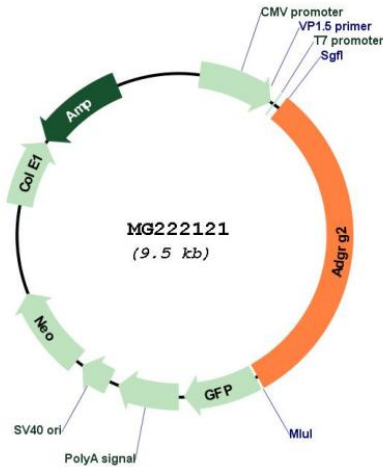
TRTRPLE - GFP Tag - V

**Restriction Sites:**

Sgfl-MluI

**Cloning Scheme:**



**Plasmid Map:**


**ACCN:** NM\_001079857

**ORF Size:** 2985 bp

**OTI Disclaimer:** The molecular sequence of this clone aligns with the gene accession number as a point of reference only. However, individual transcript sequences of the same gene can differ through naturally occurring variations (e.g. polymorphisms), each with its own valid existence. This clone is substantially in agreement with the reference, but a complete review of all prevailing variants is recommended prior to use. [More info](#)

**OTI Annotation:** This clone was engineered to express the complete ORF with an expression tag. Expression varies depending on the nature of the gene.

**Components:** The ORF clone is ion-exchange column purified and shipped in a 2D barcoded Matrix tube containing 10ug of transfection-ready, dried plasmid DNA (reconstitute with 100 ul of water).

**Reconstitution Method:**

1. Centrifuge at 5,000xg for 5min.
2. Carefully open the tube and add 100ul of sterile water to dissolve the DNA.
3. Close the tube and incubate for 10 minutes at room temperature.
4. Briefly vortex the tube and then do a quick spin (less than 5000xg) to concentrate the liquid at the bottom.
5. Store the suspended plasmid at -20°C. The DNA is stable for at least one year from date of shipping when stored at -20°C.

**RefSeq:** [NM\\_001079857.2](#), [NP\\_001073326.1](#)

**RefSeq Size:** 4685 bp

**RefSeq ORF:** 2988 bp

**Locus ID:** 237175

**UniProt ID:** [Q8CJ12](#)

**Cytogenetics:** X F4

**Gene Summary:**

Orphan receptor. Could be involved in a signal transduction pathway controlling epididymal function and male fertility. May regulate fluid exchange within epididymis.[UniProtKB/Swiss-Prot Function]