

Product datasheet for **MG222113**

Rfx4 (NM_027689) Mouse Tagged ORF Clone

Product data:

| | |
|---------------------------|---|
| Product Type: | Expression Plasmids |
| Product Name: | Rfx4 (NM_027689) Mouse Tagged ORF Clone |
| Tag: | TurboGFP |
| Symbol: | Rfx4 |
| Synonyms: | 4933412G19Rik; NYD-sp10 |
| Mammalian Cell Selection: | Neomycin |
| Vector: | pCMV6-AC-GFP (PS100010) |
| E. coli Selection: | Ampicillin (100 ug/mL) |



[View online »](#)

ORF Nucleotide Sequence:

>MG222113 representing NM_027689
 Red=Cloning site Blue=ORF Green=Tags(s)

TTTTGTAATACGACTCACTATAGGGCGGCCGGGAATTCGTCGACTGGATCCGGTACCGAGGAGATCTGCC
 GCC**CGGATCGCC**

ATGAAGTGGGCTGCCTTCGGAGGCGCTGAGTTCTTCATCCAGGAGGCATGAAGATGGAGGCAAGCTGCC
 CACTGGGCAGAAATTTACAGAATGGTACCATTACTATGGCATAGCGGTGAAGGAGAGCTCCAGTATTA
 TGATGTGATGTAATAAGAGGAGGAGCTGCCTGGGTGAGCGAGACGGCAAGAGAGAAGTACCAAGCAG
 ACGGTGGCATATTCTCCCGGTCCAAGCTTGGGACATTGCTGCCAGACTTCCAAACGTCAAAGACCTAA
 ATCTGCCAGCCAGTCTTCTGAGGAGAAGGTGTCTACCTTTATTATGATGTACAGAACACACTGTCAGAG
 AATACTGGACACTGTAATAAGAGCCAACCTTTGATGAGGTTCAAAGTTTCTTCTGCACTTTTGGCAAGGG
 ATGCCGCCACATGCTGCCGTGCTAGGCTCCTCCAGGTGGTGAACATCGTGGGTGTGTGACTCCA
 TCCTCTACAAAGCCATCTCCGGTGTGTTGATGCCACGGTCTGCAGGCGTTGCCGGACAGCTTAACTCA
 GGTGATCCGAAAGTTTGCAAGCAGCTGGACGAGTGGCTGAAAGTGGCTCTCCAGATCTCCGGAAAAC
 CTGAGAAAACATCAAATTTGAATTATCAAGGAGGTTTTCCCAAATCCTAAGGAGGCAAAACATCGTGAACC
 ATCTGTGCCAGGCATCTCGAACGGTGTCCACAGTGCAGACATCACGTTCCAGATGCTGGAGGACTGGAG
 GAATGTGGACCTGAGTAGCATACCAAGCAGACTCTGTATACCATGGAGGACTCTCGGGATGAGCACCGC
 AGACTCATCATCCAGTTGTACCAGGAGTTTGACCACCTGCTGGAGGAACAGTCCCCATCGAGTCTTACA
 TAGAATGGCTGGATACCATGGTAGACCGATGCGTTGTAAGGTGGCTGCCAAGAGACAAGGGTCTCTGAA
 GAAAGTAGCCCAACAGTTCCTGCTGATGTGGTCTTCTTGGTACGAGGGTATCCGGGACATGACCTTG
 CACAGTGCCCCAGCTTCGGGTCTTTTACCTGATTCACCTGATGTTTCGACGACTACGCTCTACTTGC
 TAGAATCTCTGCATTGTCAGGAGCGGCCAACGAGCTCATGCGAGCCATGAAAGGAGAAGGAAGCAGCTGC
 AGAAGCCAGGAAGAGATTATCTTGACAGAGGCTACCCACCAACCCCTTACCTGGTCCATCTTTCT
 CCAGCAAAGTCTGCCACATCTGTGGAGGTGCCACCTCCCTCCTCCCTGTGAGCAACCCATCCCCGAAT
 AACTGGCCTTAGCACAGCAGGAGCGATGCAGTACATACGTGGTTCGCTAACATATACAGTAACAACGGC
 TGCAGGGTACCGGCTGAGAACTCCCAACAACCTACCCTGTATGAGGAGCACCCATATGCCTTCTTCTCC
 GTCACACACAGGATACCAGTCTACTCCACAGAGAGGAGCATGGGTACACGGGAAGCTATAACTACGGGA
 GCTATGGCAACCAGCATCTCACCCTGCAGAACAGTATCCAGCCTTGCTCATGACACAGCCATCTC
 TGGGCTCTCCACTATCCCTTACCACAGGAGCTCTGCCAGTACCCTTCAATAGCCCCACTTCCAGG
 ATGGAACCTTGTGATGAGCAGTACTCCAGGCTGCATCCTACCCAGTACTCCCGATGGCCAGAGG
 TGCCGACTGCCAACGCATGCTACACAAGCCATCTGTGATTCCACGAGGTATGGAAACTCTAGTGACAT
 GTACACCCGCTGACCACGCGCAGGAATTCTGAGTATGAGCACATGCAACACTTCTGGCTTTGCTTAC
 ATCAACGGAGAGGCTCCACTGGATGGCTAAG

ACGCGTACGCGGCCGCTCGAG - GFP Tag - GTTTAA

Protein Sequence:

>MG222113 representing NM_027689
 Red=Cloning site Green=Tags(s)

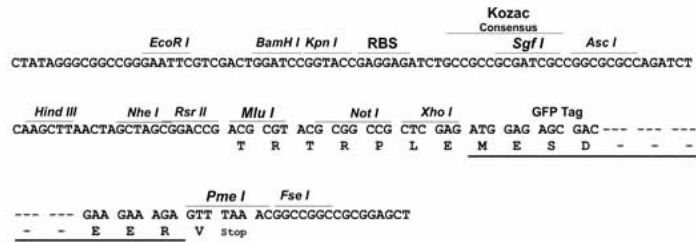
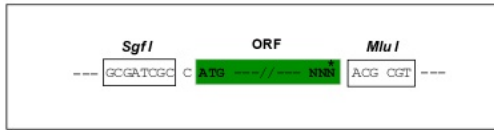
MNWAFFGGPEFFIPGGMKMEASCPLGRNFTWEVHYHYGIAVKESSQYYDVMYSKKGAAWVSETGKREVTQ
 TVAYSPRKLGTLLPDFPNVKDLNLPASLPEEKVSTFIMMYRTHCQRILDVIRANFDEVQSFLHFQWQ
 MPPHMLPVLGSSTVVNIIVGVCDSILYKAISGVLMPVLQALPDSLTVQVIRKFAKQLDEWLKVALHDLPEN
 LRNIKIFELSRFSQILRRQTSLNHLCOASRTVIHSADITFQMLEDRNVDLSSITKQTLYTMEDSRDEHR
 RLIIQLYQEFDHLLLEEQSPIESYIEWLDTMVDRCVVKVAAKRQGSLLKVAQQFLLMWSCFTRVIRDML
 HSAPSFSGFHLIHLMFDDYVLYLLESLHCQERANELMRAMKGEGSTAEAEQEEIILTEATPPTSPGPSFS
 PAKSATSVEVPPSPVSNPSPEYTGSTAGAMQSYTWSLTYTVTAAAGSPAENSQQLPCRSTHMPSSS
 VTHRIPVYSHREEHGYTGSYNYGSYGNQHPHPLQNQYPALPHDTAISGPLHYSPYHRSSAQYFNSPTS
 RMEPCLMSSTPRLHPTVTPRWEVPTANACYTSPSVHSTRYGNSSDMYTPLTTRRNSEYEHMQHFPGFAY
 INGEASTGWAK

TRTRPLE - GFP Tag - V

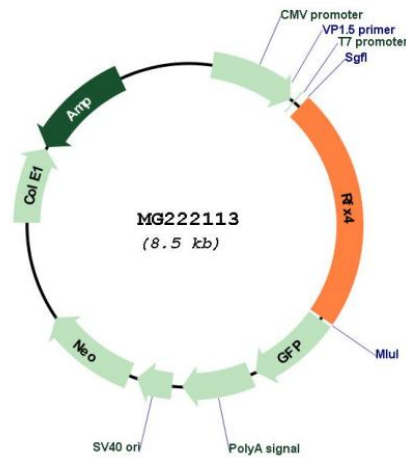
Restriction Sites: SgfI-MluI

Cloning Scheme:

Cloning sites used for ORF Shutting:



Plasmid Map:



ACCN: NM_027689

ORF Size: 1923 bp

| | |
|-------------------------------|---|
| OTI Disclaimer: | The molecular sequence of this clone aligns with the gene accession number as a point of reference only. However, individual transcript sequences of the same gene can differ through naturally occurring variations (e.g. polymorphisms), each with its own valid existence. This clone is substantially in agreement with the reference, but a complete review of all prevailing variants is recommended prior to use. More info |
| OTI Annotation: | This clone was engineered to express the complete ORF with an expression tag. Expression varies depending on the nature of the gene. |
| Components: | The ORF clone is ion-exchange column purified and shipped in a 2D barcoded Matrix tube containing 10ug of transfection-ready, dried plasmid DNA (reconstitute with 100 ul of water). |
| Reconstitution Method: | <ol style="list-style-type: none">1. Centrifuge at 5,000xg for 5min.2. Carefully open the tube and add 100ul of sterile water to dissolve the DNA.3. Close the tube and incubate for 10 minutes at room temperature.4. Briefly vortex the tube and then do a quick spin (less than 5000xg) to concentrate the liquid at the bottom.5. Store the suspended plasmid at -20°C. The DNA is stable for at least one year from date of shipping when stored at -20°C. |
| RefSeq: | NM_027689.3 , NP_081965.2 |
| RefSeq Size: | 3274 bp |
| RefSeq ORF: | 1926 bp |
| Locus ID: | 71137 |
| UniProt ID: | Q7TNK1 |
| Cytogenetics: | 10 C1 |
| Gene Summary: | Isoform 1: Transcription factor that plays a role in early brain development. May activate transcription by interacting directly with the X-box. May activate transcription from CX3CL1 promoter through the X-box during brain development.[UniProtKB/Swiss-Prot Function] |