

## Product datasheet for **MG222112**

### **Bex2 (NM\_009749) Mouse Tagged ORF Clone**

#### Product data:

**Product Type:** Expression Plasmids  
**Product Name:** Bex2 (NM\_009749) Mouse Tagged ORF Clone  
**Tag:** TurboGFP  
**Symbol:** Bex2  
**Synonyms:** AL024066; Bex1  
**Mammalian Cell Selection:** Neomycin  
**Vector:** pCMV6-AC-GFP (PS100010)  
**E. coli Selection:** Ampicillin (100 ug/mL)  
**ORF Nucleotide Sequence:** >MG222112 representing NM\_009749  
**Red**=Cloning site **Blue**=ORF **Green**=Tags(s)

TTTTGTAATACGACTCACTATAGGGCGGCCGGAATTCGTCGACTGGATCCGGTACCGAGGAGATCTGCC  
GCC**CGATCGCC**

ATGGAGTCCAAGTGAACAAGGTGTGAAAAATCTCAACATGGAGAATGACCATCAGGAAAAGGAGGAAA  
AGGAAGAAAAGCCACAGGATGCTAGCAAAGGGATCCGATTGTGGCCCTGCCTTTCGAAGCTGGAGACTA  
CTACGTGCCTAGAGGAGGTTCGAGGCGGTTCCGGGTTCCGCAGCCCATCGTGCCTACAGATGGGACCTG  
ATGCATAGGGTTGGGAGCCCCAGGAAGGATGAGAGAGGAGAACGTACAGAGGTTTGGGATGATGTGA  
GACAGCTCATGGAGAAGCTGAGGAAAGGCAGCTGAGCCACAGCCTCGGGCGGTTAGCACTGACCCGCC  
TCATCATGACCACCATGATGAGTTTTGCCTTATGCC

**ACGCGT**ACGCGGCCGCTCGAG - GFP Tag - GTTTAA

**Protein Sequence:** >MG222112 representing NM\_009749  
**Red**=Cloning site **Green**=Tags(s)  
MESKVEQGVKNLNMENDHQEKEEKEEKPDASKRDPIVALPFEAGDYVPRGRRRFRVRQPIVHYRWDL  
MHRVGEPPQGRMREENVQRFGDDVRLMEKLRERQLSHSLRAVSTDPPHDHHDEFCLMP

**TRTRPLE** - GFP Tag - V

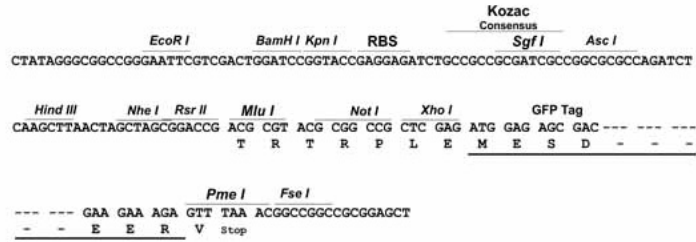
**Restriction Sites:** Sgfl-Mlul



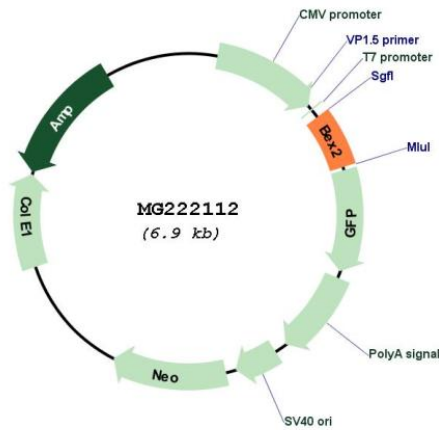
[View online »](#)

Cloning Scheme:

Cloning sites used for ORF Shutting:



Plasmid Map:



ACCN: NM\_009749  
 ORF Size: 387 bp

<b>OTI Disclaimer:</b>	<p>Due to the inherent nature of this plasmid, standard methods to replicate additional amounts of DNA in E. coli are highly likely to result in mutations and/or rearrangements. Therefore, OriGene does not guarantee the capability to replicate this plasmid DNA. Additional amounts of DNA can be purchased from OriGene with batch-specific, full-sequence verification at a reduced cost. Please contact our customer care team at <a href="mailto:custsupport@origene.com">custsupport@origene.com</a> or by calling 301.340.3188 option 3 for pricing and delivery.</p> <p>The molecular sequence of this clone aligns with the gene accession number as a point of reference only. However, individual transcript sequences of the same gene can differ through naturally occurring variations (e.g. polymorphisms), each with its own valid existence. This clone is substantially in agreement with the reference, but a complete review of all prevailing variants is recommended prior to use. <a href="#">More info</a></p>
<b>OTI Annotation:</b>	<p>This clone was engineered to express the complete ORF with an expression tag. Expression varies depending on the nature of the gene.</p>
<b>Components:</b>	<p>The ORF clone is ion-exchange column purified and shipped in a 2D barcoded Matrix tube containing 10ug of transfection-ready, dried plasmid DNA (reconstitute with 100 ul of water).</p>
<b>Reconstitution Method:</b>	<ol style="list-style-type: none"> <li>1. Centrifuge at 5,000xg for 5min.</li> <li>2. Carefully open the tube and add 100ul of sterile water to dissolve the DNA.</li> <li>3. Close the tube and incubate for 10 minutes at room temperature.</li> <li>4. Briefly vortex the tube and then do a quick spin (less than 5000xg) to concentrate the liquid at the bottom.</li> <li>5. Store the suspended plasmid at -20°C. The DNA is stable for at least one year from date of shipping when stored at -20°C.</li> </ol>
<b>RefSeq:</b>	<p><a href="#">NM_009749.2</a>, <a href="#">NP_033879.1</a></p>
<b>RefSeq Size:</b>	<p>902 bp</p>
<b>RefSeq ORF:</b>	<p>390 bp</p>
<b>Locus ID:</b>	<p>12069</p>
<b>UniProt ID:</b>	<p><a href="#">Q9WTZ8</a></p>
<b>Cytogenetics:</b>	<p>X 57.37 cM</p>
<b>Gene Summary:</b>	<p>Regulator of mitochondrial apoptosis and G1 cell cycle. Regulates the level of PP2A regulatory subunit B and PP2A phosphatase activity (By similarity).[UniProtKB/Swiss-Prot Function]</p>