

## Product datasheet for **MG222102**

### **Dnm3 (NM\_172646) Mouse Tagged ORF Clone**

#### **Product data:**

Product Type:	Expression Plasmids
Product Name:	Dnm3 (NM_172646) Mouse Tagged ORF Clone
Tag:	TurboGFP
Symbol:	Dnm3
Synonyms:	9630020E24Rik; AW061159; B230343F03Rik; C530045C17; mKIAA0820
Mammalian Cell Selection:	Neomycin
Vector:	pCMV6-AC-GFP (PS100010)
E. coli Selection:	Ampicillin (100 ug/mL)



[View online »](#)

ORF Nucleotide  
Sequence:

>MG222102 representing NM\_172646  
 Red=Cloning site Blue=ORF Green=Tags(s)

TTTTGTAATACGACTCACTATAGGGCGGCCGGGAATTCGTCGACTGGATCCGGTACCGAGGAGATCTGCC  
 GCCCGCATCGCC

ATGGGGAACCGGGAGATGGAAGAGCTGATCCCTCTGGTGAACCGTCTGCAGGACGCTTTCTCGGCTCTGG  
 GACAGAGCTGTCTGCTAGAGCTGCCACAGATCGCCGTGGTGGCGGCCAGAGCGCCGCAAGAGCTCACT  
 GCTCGAGAATTTCTGGGAGGACTTTCTTCTCGAGGCTCAGGCATTGTAACAGACGGCCTCTTGTA  
 CTCAGCTTGTACCTCTAAAGCAGAATATGCCGAGTTTCTACATTGCAAAGGAAAAAATTTACAGATT  
 TTGATGAAGTTCGACATGAGATCGAAGCAGAAACAGCCGCTAACAGGAATGAATAAAGGCATCTCTTC  
 TATACCCATTAACCTCCGAGTCTACTCTCCACGTGTTAAATCTAACGCTAATCGACCTACCTGGAATA  
 ACGAAAGTGGCGTGGGAGACCAGCCGCAGATATCGAGTATCAGATCAGAGATATGATTATGCAGTTCA  
 TCACGAGGGAGAACTGTCTGATTTTGGCTGTACGCCAGCCAACCCGATCTTGGCAACTCGGATGCACT  
 GAAGCTAGCCAAAGAAGTTGATCCTCAAGTCTGAGGACATTGGCGTGATCACCAGCTGGATCTCATG  
 GATGAAGGAACAGATGCCAGGGATGTGCTGGAGAACAAGCTGCTGCCTCTTCGCAGGGGGCTACGTGGGGG  
 TGGTCAACAGAAGCCAGAAGGACATAGATGGAAAGAAAGACATTAAAGGCAGCCATGTTGGCAGAAAGGAA  
 ATTTTTCTTTCTCACCCGGCTACAGACACATTGCTGATCGTATGGGGACCCACACCTCCAGAAGGTC  
 CTGAATCAGCAACTTACCAACCATATTCGAGATACTCTGCCCACTTCAGGAACAAGCTACAGGGGCAGC  
 TGCTCTCCATAGAACATGAAGTGGAAAGCCTTCAAAAATTCAAACCGGAAGACCCACAAGGAAGACCAA  
 AGCCCTGCTGCAGATGGTCCAACAGTTTGTGTGGACTTTGAGAAGAGAATCGAAGGGTCAAGGAGATCAA  
 GTAGACACCTTAGAGCTCTCTGGCGTGCTAAGATCAACCGCATTTTCCACGAACGCTTTCTTTTGAGA  
 TAGTGAAGATGGAGTTCAATGAGAAAGAACTGAGAAGAGAAATAAGCTACGCAATCAAAAACATACATGG  
 GATCAGGACAGGGTTGTTTACTCCAGACATGGCGTTTGAGGCAATAGTTAAAAAGCAGATGTAATAACTG  
 AAAGGGCCTTCTTGAAGAGTGTGGACCTGGTAATGCAGGAGCTGATCAACACCGTGAAGAAGTGTACCA  
 AGAGGCTGGCAAACCTTCCCAGACTCTGTGAAGAAACAGAAAGGATTGTTGCTAACACATCCGTGAGAG  
 AGAAGGGAAAGACAAGGACCAGGTCTGCTACTGATTGACATTCAAGTCTTTACATTAACCAACCAT  
 GAGGACTTCATCGGCTTTGCAAATGCTCAGCAGAGGAGCAGTCAAGTTTACAAGAAAAGCACAATTGGAA  
 ATCAGGTGATTCGTAAGGGCTGGCTGACCGTCAGCAACATTGGCATCATGAAAGGGGGCTCGAAGGGCTA  
 CTGTTTTGTCTCACTGCAGAAAGCCTGTCTGGTATAAAGACGATGAGGAGAAAAGAAAAGAAATATATG  
 CTTCCCTGGACAACCTGAAGTCCGGGATGTGGAGAAGGGCTTCATGTCCAGCAAGCACGTCTTCGCAC  
 TCTTCAACACCGAGCAAAGGAATGTATACAAGACTATCGCTTCTGGAGCTGGCCTGTGATTCCAGGA  
 AGATGTGGACAGCTGGAAGGCGTCTCTGCTCAGAGCCGGGGTCTACCCAGATAAATCTGTAACCTGAAAT  
 GATGAAATGGACAAGCAGAAAACCTTTCCATGGACCCACAGTTGGAGAGGCAAGTGGAGACCATACGCA  
 ACCTAGTAGACTCCTACATGTCAATAATCAACAAATGCATCCGAGACTTAATCCAAAAACAATAATGCA  
 TCTTATGATCAATAACGTTAAAGACTTCATCAACTCTGAACCTTAGCACAGCTCTACTCTTCTGAGGAC  
 CAGAACACTCTGATGGAAGAGTCCGCGGAGCAGGCTCAGCGCCGAGATGAGATGCTCCGAATGTACCAAG  
 CCCTGAAAGAAGCTCTCGCAATCATTGGTGACATCAACACGGCCACGGTGTCCACCCAGCCCCACCTCC  
 AGTCGATGACTCCTGGTCCAACACTCCAGGAGGTCACTCCTCCGAGCCCCACCACCAACGAAGGCTG  
 ACGATAAGTGTCCCTCCCAAGGCCACATCTGGCCGTGGGCCAGTCCCGCTATCCCTCTCCAGGCC  
 CCCACTCCGAGCTCCCCAGTTCCATTCCGTCCTGGCCATTACCTCCTTTTCCCAACAGCAGTGACTC  
 CTTTGGAGCCCCTCCGCAAGTCCGTCCAGGCCACCAGGGCACCCCCAGTGTTCGAAGCCGGAGGCCA  
 CCCCCATACCAACTCGCCCACTATAATCCGTCCACTAGAATCCTCACTGTTAGAC

ACCGTACGCGGCCGCTCGAG - GFP Tag - GTTTAA

**Protein Sequence:** >MG222102 representing NM\_172646  
 Red=Cloning site Green=Tags(s)

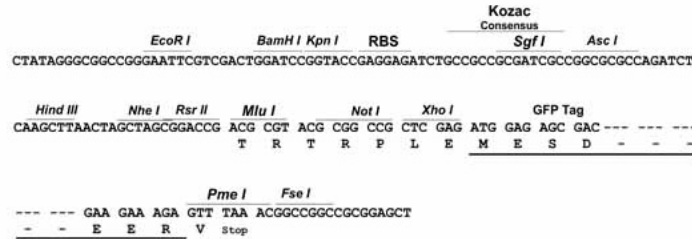
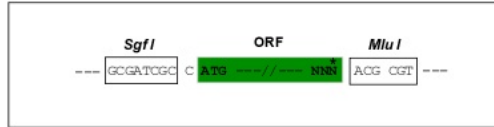
```
MGNREMEELIPLVNRLQDAFSALGQSCLELQPQIAVVGGSAGKSSVLENFVGRDFLPRGSGIVTRRPLV
LQLVTSKAEYAEFLHCKGKFTDFDEVREIEAETDRVTGMNKGISSIPINLRVYSPHVLNLTIDLPGI
TKVPPVGDQPPDIEYQIRDMIMQFITRENCLILAVTPANTDLANSALKLAKEVDPQGLRTIGVITKLDLM
DEGTDARDVLENKLLPLRRGYGVVNRSQKDIDGKKDIKAAMLAERKFFLSHPAYRHIADRMGTPHLQKV
LNQQLTNHIRDTLPNFRNKLQGGLLSIEHEVEAFKNFKPEDPTRKTKALLQMVQQFAVDFEKRIEGSGDQ
VDTLELSGGAKINRIFHERFPFEIVKMEFNEKELRREISYAIKNIHGIRTGLFTPDMAFEAIVKKQIVKL
KGPPLKSVDLVMQELINTVKKCTKRLANFPRLCEETERIVANHIREREGTKDQVLLLIDIQVSYINTNH
EDFIGFANAQQRSSQVHKKSTIGNQVIRKGWLTYSNIGIMKGGSKGYWVFLTAESLSWYKDDEEKEKKYM
LPLDNLKVRDVEKGFMSKHVFFALFNTEQRNVYKDYRFLELACDSQEDVDSWKASLLRAGVYPDKSVTEN
DENGQAENFSMDPQLERQVETIRNLVDSYMSIINKCIRDLPKTIHMLMINNVKDFINSELLAQLYSSD
QNTLMEEAEQAQRREMLRMYQALKEALAIIGDINTATVSTPAPPVDDSWLQHSRRSPPPSPTTQRRL
TISAPLPRPTSGRGPAPAIPSPGPHSGAPPVFRPGPLPPFPNSSDSFGAPPQVPSRPTRAPPSVPSRRP
PPSPTRPTIIRPLESSLLD
```

TRTRPLE - GFP Tag - V

**Restriction Sites:** Sgfl-Mlul

**Cloning Scheme:**

Cloning sites used for ORF Shutting:



**ACCN:** NM\_172646

**ORF Size:** 2577 bp

**OTI Disclaimer:** The molecular sequence of this clone aligns with the gene accession number as a point of reference only. However, individual transcript sequences of the same gene can differ through naturally occurring variations (e.g. polymorphisms), each with its own valid existence. This clone is substantially in agreement with the reference, but a complete review of all prevailing variants is recommended prior to use. [More info](#)

**OTI Annotation:** This clone was engineered to express the complete ORF with an expression tag. Expression varies depending on the nature of the gene.

**Components:** The ORF clone is ion-exchange column purified and shipped in a 2D barcoded Matrix tube containing 10ug of transfection-ready, dried plasmid DNA (reconstitute with 100 ul of water).

**Reconstitution Method:**

1. Centrifuge at 5,000xg for 5min.
2. Carefully open the tube and add 100ul of sterile water to dissolve the DNA.
3. Close the tube and incubate for 10 minutes at room temperature.
4. Briefly vortex the tube and then do a quick spin (less than 5000xg) to concentrate the liquid at the bottom.
5. Store the suspended plasmid at -20°C. The DNA is stable for at least one year from date of shipping when stored at -20°C.

**RefSeq:** [NM\\_172646.3](#)

**RefSeq Size:** 4590 bp

**RefSeq ORF:** 2580 bp

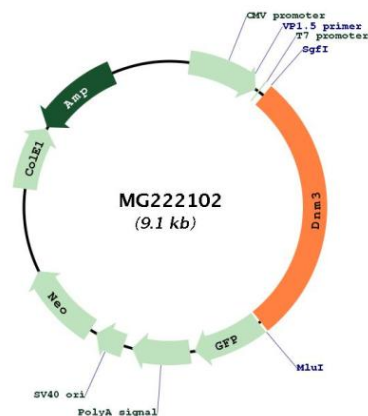
**Locus ID:** 103967

**UniProt ID:** [Q8BZ98](#)

**Cytogenetics:** 1 H2.1

**Gene Summary:** Microtubule-associated force-producing protein involved in producing microtubule bundles and able to bind and hydrolyze GTP. Most probably involved in vesicular trafficking processes, in particular endocytosis (By similarity).[UniProtKB/Swiss-Prot Function]

## Product images:



Circular map for MG222102