

Product datasheet for **MG222099**

Bnc1 (NM_007562) Mouse Tagged ORF Clone

Product data:

Product Type:	Expression Plasmids
Product Name:	Bnc1 (NM_007562) Mouse Tagged ORF Clone
Tag:	TurboGFP
Symbol:	Bnc1
Synonyms:	AI047752; AW546376; Bnc
Mammalian Cell Selection:	Neomycin
Vector:	pCMV6-AC-GFP (PS100010)
E. coli Selection:	Ampicillin (100 ug/mL)



[View online »](#)

ORF Nucleotide Sequence:

>MG222099 representing NM_007562
 Red=Cloning site Blue=ORF Green=Tags(s)

TTTTGTAATACGACTCACTATAGGGCGGCCGGGAATTCGTCGACTGGATCCGGTACCGAGGAGATCTGCC
 GCC**CGGATCGCC**

ATGCGCGGTCGCGAGCCGGGGCGGACGCGGAGCGGCCGGGCAGGGGACGCGCCGGGAAGGCCGGC
 TCCGCAGCGGCTGCAGGATGGCTGAGGCTATCGGCTGTACTCTGAACTGCAGTTGCCAATGTTTCAAACC
 TGGGAAGATAAACACCCTCAGTGTGAACAGTGCAGGCACGGATGGGTGGCTCATGCTCTGAGTAAGCTG
 AGGATCCCCCTGTGTATCCAACAAGCCAAGTGGAAAATTGTCAGTCCAATGTGGTGTTCGATATTAGCA
 GCCTCATGCTCTATGGAACCCAGGCTATCCCTGTTGCGCTGAAAACTCTATTGGACCGGCTTTCAGTGT
 GCTGAAGCAAGATGAGGTTCTACAGATCTCCATGCCCTGGACTGGACGCTTCAGGATTACATCCGTGGA
 TATGTGTACAGGATGCCTCTGGGAAGGTGCTGGATCACTGGAGCATCATGACCAGTGGAGGGAAGTGG
 CTACCTTGCAAGCAGTTCCTTCGCTTTGGAGAGACCAAGTCCATAGTTGAACTCATGGCAATCCAAGAGAA
 AGAAGAGCAGTCTGTCATCGTACCGCCACCACGGCCAATGTAGACATCAGGGCTTTCATCGAGAGCTGC
 GGCACAGGAGTCCAGCCTCCCTACTCCTGTGGACAAAGGAAGCCCTGGCGGCATGCACCCCTTTGAGA
 ACCTTATAAGCAACATGACGTTTCATGTTGCCTTCCAGTTCCTCAACCCTCTGCCTCCTGCTCTGATAGG
 GTCGCTGCCTGAACAGTACATGCTGGAGCAGGGCAGGACCAAAGCCAGGAACCCAAACAGGAGCTCCAT
 GGGCCCTTCTCGGACAGCAGCTTCTTAACCTCCACCCCATTTTCAGGTTGAAAAAGAACAGTGCCTCAACT
 GTCCAGAAACTGTCCCCAAAAGGAAGACAGTGCCTCACTTAAGCGACTCCAGTCCATATAGCATTGCCAG
 TAAGCTTGAAGGACACAGCTGTCCCCTGAGGCCAAGGTGAAGCCTGAGAGGAACAGCCTCAGTGCCTAAG
 AAGGGCCGGGTGTTCTGCACGGCGTGCAGAGAAGACATTCATGACAAAGGCACCTGAAGATCCACTACA
 ACGCCCTCCACTAAAGATCAAGCACAAGTGCACGATCGAAGGGTGAACATGGTGTTCAGTCCCTGAG
 GAGCCGGAACCGACACAGCGCCAACCCCAACCCTCGCCTGCACATGCCAATGAACAGAAACAACAGGGAC
 AAAGATCTCAGGAATAGCCTGAACCTGGCAAGCTCTGAGACCTACAAGGCCCCAGGTTTTCAGTGGTGT
 CTCAGACTGTGGGCCCTCCCTGGCTACACTGGTTCCTGGAGGACTCCAAAGGCCAACCTGCTTTCTC
 AAGCATTGGGCAAAATGGTGTGCTTTTCCCTAATCTAAAGACTGTCCAGCCAGTCCCTTCTTTCTACCGC
 AGTCCAGCCACTCCCGGGAGCTGGCCAACACACCCGGCATGCTGCCTCCCTCCCTCTGTTGCTCTT
 CGATCCCAGAACAGCTGGTTTCCACAGACATGCCATTGATGCTCTTCCCAAGAAGAAATCCCGCAAGT
 CAGTATGCCTATCAAAATAGAGAAAGAAGCTGTGAAATAGCTGAGGAGAAGAGACAGTCTCAGTCA
 GACGATGAGTGCCTCTGCAGGTAGTCAAGTGAAGACGAGCCAGAGACAGCAGTCTAGGTGAGACAGAG
 TACCTGAGGAGCAGCATACACAGCTAAGCTTAGAGGAGCCTTCCACAAGGAGAAAGAGCCTGCCATCT
 TGAATCTGTGATTGAGTACATGGAGCTCTCAGCAGAACCCTTGAGCAGACCACGCTCACTGAGAGGGAG
 GCTGAACAGAAGGTAGCACTGAGTTCAGTATGATGCCAAGAGAGGTGGAGGATGGTGGCCACGAGCGCCATT
 TCACAGCTGGCCTGGTACCCCAATCCCTTTCTGACTACATGGAGTTGCAGCAGCGCCTGCTTGTGCTGG
 GGGACTCTTCGGTGTCTTGTCCAACAGGGGGATGGCTTTTCTTTCTGGAAAGAGTCTAAAGAGCTGGAG
 CACCTGGGTGAGCATGCACTAGTGAAGCAGAAGGAAGAAGCTTGCTTCCAGTGTGACATCTGCAAGAAGA
 CCTTTAAAAACGCTTGCAGCATGAAGACGATGAGAAGAACAACACACGCCCCGAGAGACACACGCGTGCAC
 AGTGGAGGGCTGCGGGGCTGCTTTCCCTTCCCGTAGGAGCAGAGACAGACAGCTCGAACCTAAGCCTC
 CACCAGAAAGTACTGAATGAAGAAGCATTGGAGACTAGTGAAGACATTTTCGTGACGCTTACCTTCTGC
 AAGATGTGGCCAAGGAGGCTATCAGGATGTGGCTTTCACGCCACAAGCATCACAGACATCTGTCATCTT
 CAAGGGAACAAGTGGCATGGGCAGTCTGGTTTACCCAATATCTCAAGTTCACAGTCCAGCCTGGAGAGC
 TACAACCTGGCCCCCTAGCGAGGGCACCATCTGGATTTGAGCACTACCTCAAGTATGAAGTCAGAGA
 GCAGCAGTCACTCCTCCTGGACTCTGATGGCGTGAAGTGAAGGACTGCCCTTATGGAGGACAGTGA
 TGGCAACTGTGAAGGACAGACCTTGTCTCTGGGAAGATGAATACCCTCTCTGTGCTTAAAGGAGAAG
 GCAGACCAGACCTTGTAGCCTGCCCTCTGGTTTCCAATAACCTGTCATCTCTGCCAAAAGATATACA
 GTAACAAAGGACCTTTAGAGCCATTACAAAACCGTGCACCTCCGCCAGCTCCACAAGTCAAAGTGCC
 AGGCTGCAACACGATGTTCTCATCTGTTGCGAGTAGAAAACAGACACAGTCAAGATCCCAACTGCACAAG
 AGCCTGGCTTCATCTCAAGCCACTCCAG

AG**CGGACCG**ACGCGTACGCGGCCGCTCGAG - GFP Tag - GTTTAA

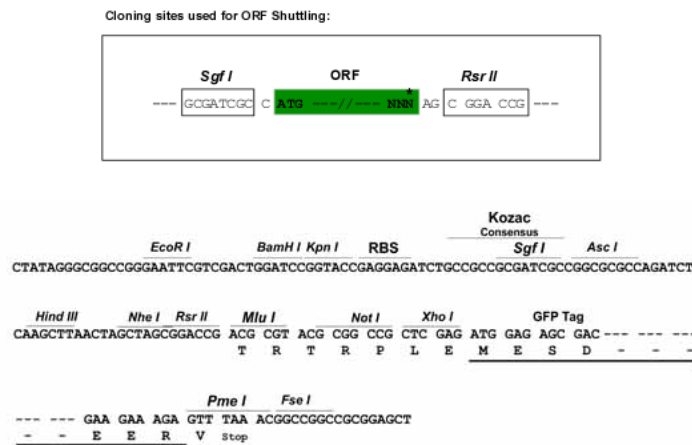
Protein Sequence: >MG222099 representing NM_007562
 Red=Cloning site Green=Tags(s)

MRRSPSRGGRGAARAGDARREGRLRSGCRMAEAI GCTLNCSCQC FKP G K I N H R Q C E Q C R H G W V A H A L S K L
 R I P P V Y P T S Q V E I V Q S N V V F D I S S L M L Y G T Q A I P V R L K I L L D R L F S V L K Q D E V L Q I L H A L D W T L Q D Y I R G
 Y V L Q D A S G K V L D H W S I M T S E E E V A T L Q Q F L R F G E T K S I V E L M A I Q E K E E Q S V I V P P T T A N V D I R A F I E S C
 G H R S A S L P T P V D K G S P G M H P F E N L I S N M T F M L P F Q F F N P L P P A L I G S L P E Q Y M L E Q G Q D Q S Q E P K Q E L H
 G P F S D S S F L T S T P F Q V E K E Q C L N C P E T V P Q K E D S A H L S D S S S Y S I A S K L E R T Q L S P E A K V K P E R N S L S A K
 K G R V F C T A C E K T F Y D K G T L K I H Y N A V H L K I K H K C T I E G C N M V F S S L R S R N R H S A N P N P R L H M P M N R N R D
 K D L R N S L N L A S S E T Y K R P G F T V V S P D C G P L P G Y T G S V E D S K G Q P A F S S I G Q N G V L F P N L K T V Q P V L P F Y R
 S P A T P A E L A N T P G M L P S L P L L S S S I P E Q L V S T D M P F D A L P K K S R K S S M P I K I E K E A V E I A E E K R H S L S S
 D D E V P L Q V V S E D E P E D S S P R S D R V P E E Q H T Q L S L E E P L P Q G E R A C H L E S V I E S H G A L S R T L E Q T T L T E R E
 A E Q K V A L S S V M P R E V D G G H E R H F T A G L V P Q I P F P D Y M E L Q Q R L L A G G L F G A L S N R G M A F P F L E E S K E L E
 H L G E H A L V R Q K E E A C F Q C D I C K T F K N A C S M K T H E K N T H A R E T H A C T V E G C G A A F P S R R S R D R H S S N L S L
 H Q K V L N E E A L E T S E D H F R A A Y L L Q D V A K E A Y Q D V A F T P Q A S Q T S V I F K G T S G M G S L V Y P I S Q V H S A S L E S
 Y N S G P P S E G T I L D L S T T S S M K S E S S S H S W D S D G V S E E G T A L M E D S D G N C E G Q S L V S G E D E Y P L C V L M E K
 A D Q S L A S L P S G L P I T C H L C Q K I Y S N K G T F R A H Y K T V H L R Q L H K C K V P G C N T M F S S V R S R N R H S Q N P N L H K
 S L A S S P S H L Q

SGP TRRRLE - GFP Tag - V

Restriction Sites: SgfI-RsrII

Cloning Scheme:

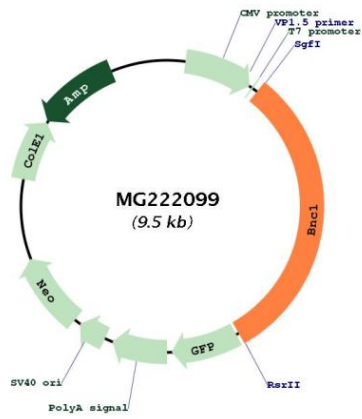


ACCN: NM_007562

ORF Size: 2970 bp

OTI Disclaimer:	<p>Due to the inherent nature of this plasmid, standard methods to replicate additional amounts of DNA in E. coli are highly likely to result in mutations and/or rearrangements. Therefore, OriGene does not guarantee the capability to replicate this plasmid DNA. Additional amounts of DNA can be purchased from OriGene with batch-specific, full-sequence verification at a reduced cost. Please contact our customer care team at custsupport@origene.com or by calling 301.340.3188 option 3 for pricing and delivery.</p> <p>The molecular sequence of this clone aligns with the gene accession number as a point of reference only. However, individual transcript sequences of the same gene can differ through naturally occurring variations (e.g. polymorphisms), each with its own valid existence. This clone is substantially in agreement with the reference, but a complete review of all prevailing variants is recommended prior to use. More info</p>
OTI Annotation:	This clone was engineered to express the complete ORF with an expression tag. Expression varies depending on the nature of the gene.
Components:	The ORF clone is ion-exchange column purified and shipped in a 2D barcoded Matrix tube containing 10ug of transfection-ready, dried plasmid DNA (reconstitute with 100 ul of water).
Reconstitution Method:	<ol style="list-style-type: none"> 1. Centrifuge at 5,000xg for 5min. 2. Carefully open the tube and add 100ul of sterile water to dissolve the DNA. 3. Close the tube and incubate for 10 minutes at room temperature. 4. Briefly vortex the tube and then do a quick spin (less than 5000xg) to concentrate the liquid at the bottom. 5. Store the suspended plasmid at -20°C. The DNA is stable for at least one year from date of shipping when stored at -20°C.
RefSeq:	NM_007562.2 , NP_031588.2
RefSeq Size:	4663 bp
RefSeq ORF:	2973 bp
Locus ID:	12173
Cytogenetics:	7 D3

Product images:



Circular map for MG222099