

## Product datasheet for **MG222094**

### **Stau2 (NM\_001111272) Mouse Tagged ORF Clone**

#### **Product data:**

Product Type:	Expression Plasmids
Product Name:	Stau2 (NM_001111272) Mouse Tagged ORF Clone
Tag:	TurboGFP
Symbol:	Stau2
Mammalian Cell Selection:	Neomycin
Vector:	pCMV6-AC-GFP (PS100010)
E. coli Selection:	Ampicillin (100 ug/mL)



[View online »](#)

**ORF Nucleotide Sequence:**

>MG222094 representing NM\_001111272  
 Red=Cloning site Blue=ORF Green=Tags(s)

TTTTGTAATACGACTCACTATAGGGCGGCCGGGAATTCGTCGACTGGATCCGGTACCGAGGAGATCTGCC  
 GCC**CGGATCGCC**

ATGCTTCAGATAAATCAGATGTTTTCGGTGCAGCTGAGTCTTGGCGAGCAGACATGGGAATCCGAAGGGA  
 GCAGTATAAAGAAGGCCCAACAAGCTGTTGCTAACAAAGCTTTGACTGAATCTACGTTCCCAAACCACT  
 TCAGAAACCACCTAAAAGTAATGTCAATAATAACCCAGGTAGTATAACTCCAACCTGTGGAACCTGAATGGG  
 CTCGCTATGAAAAGGGGAGAGCCTGCCATCTACAGGCCACTAGATCCAAAGCCATCCCAAATTATAGAG  
 CTAACAACAACCTCCGGGGCATGTACAATCAGAGGTATCATTGCCCAATGCCAAGATCTTTTATGTTCA  
 GTTAACTGTAGGAAATAATGAATCTTTGGTGAAGGGAAGACTCGACAAGCTGCCAGACACAATGCTGCG  
 ATGAAAGCGCTTCAAGCCCTACAGAATGAGCCAATCCAGAAAAGTCTCCCAGAATGGTGAATCAGGAA  
 AAGAAATGGATGACGATAAAGATGCAAAATAATCTGAAAATAAGCTTAGTGTGGAGATTGCGCTGAAGAG  
 AAATATGCCTGTCAGTTTTGAGGTTATTAAGAAAAGTGGACCACCACATATGAAGAGTTTTGTAACCTCGG  
 GTGTCAGTGGGAGAATTTCTGCAGAAGGAGAGGAAATAGCAAAAACTCTCCAAGAAGCGTGCCGCAA  
 CCACTGTCTTACAGGAGCTTAAAAAATCCCACCTCTTCTGTGGTAGAGAAGCCAAAACTATTTTTTAA  
 AAAACGCCCTAAAAAATAGTAAAGGCTGGACCCGACTATGGTCAAGGAATGAACCCATTAGCCGCTG  
 GCTCAGATCCAGCAAGCCAGAAAGGAAAAGGAGCCTGATTACATCTACTCTCAGAACGAGGAATGCCTC  
 GCCGTCGAGAGTTCGTAATGCAGGTCAAGGTAGGCAATGAAGTTGCGACTGGAACAGGACCCAATAAAAA  
 GATAGCCAAAAAATGCTGCTGAAGCAATGCTGTTACAGCTTGCTATAAAGCGTCCACAGTCTTCAG  
 GATCCGCTCGACAAGACAGGTGAAAACAAGGATGGAGTGGTCCAAGCCTGGGTTTCTGAAACCAACA  
 ATAACACTCCAAAAGGAATCTTCATCTTTCTCTGATGTTTATCAAGAGATGGAAGCTAGCCGCCACAG  
 AGTGACCTCTGGCACAACCTCTAAGCTACTTATCTCCCAAAGATATGAACCAACCTTCAAGCTCTTTCTTC  
 AGTGTGTCTCCCTCATCAACTAGTTCAGCCACAGTTGCCAGGAACTCCTTATGAATGGAACATCTCCTA  
 CTGCTGAAGCCATAGGTTTTAAAAGGAAGTTCTCTACTTCCCCTGTTCTTCAGTACAGCCTTAAAAACA  
 ACTGGAATATTTAGCAAGGATTCAAGGCTTTCAGGCAGCCTTAAGTGCCTTGAACAGTTTTCTGAACAA  
 GGACTGGAATCAATTGATGGGCGAGTGAATGTTGAAAAGGTTCTCTGAAAAACAAGCCAAGCATCTGC  
 GGGAGAAAGCAGACAATAACCAGGCGAAGCCGGCCTCCATCTCTCAGGACTGCAAGAAATCAAAGTCGGC  
 CATC

**ACGCGT**ACGCGGCCGCTCGAG – GFP Tag – GTTTAA

**Protein Sequence:**

>MG222094 representing NM\_001111272  
 Red=Cloning site Green=Tags(s)

MLQINQMFSVQLSLGEQTWESEGSSIKKAQQAVANKALTESTLPKPVQKPPKSNVNNNPGSITPTVELNG  
 LAMKRGEPAIYRPLDPKPFPNYRANYNFRGMYNQRYHCPMPKIFYVQLTVGNNEFFGEGKTRQAAARHNA  
 MKALQALQNEPIPEKSPQNGESGKEMDDDKDANKSEISLVFEIALKRNMPVSFEVIKESGPPHMKSFVTR  
 VSVGEFSAEGEGNSKLSKKRAATTVLQELKLLPPLPVVEKPKLFFKKRPKTIIVKAGPDYQGMNPI SRL  
 AQIQQARKEKEPDYILLSERGMPPRRRFVMQVKVNEVATGTGPNKIIAKKNAAEAMLLQLGYKASTSLQ  
 DPLDKTGENKGWSPKPGFPEPTNNTPKGILHLSPDVYQEMEASRHRVTSGLTSLYSPKDMNQPSSTFF  
 SVSPSSTSATVARELLMNGTSPTAEAIGLKGSSPTSPCSSVQPSKQLEYLARIQGFQAALSALKQFSEQ  
 GLESIDGAVNVEKGSLEKQAKHLREKADNNQAKPAPISQDCKKSKSAI

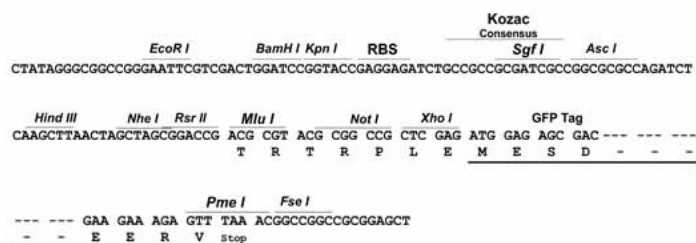
**TRTRPLE** – GFP Tag – V

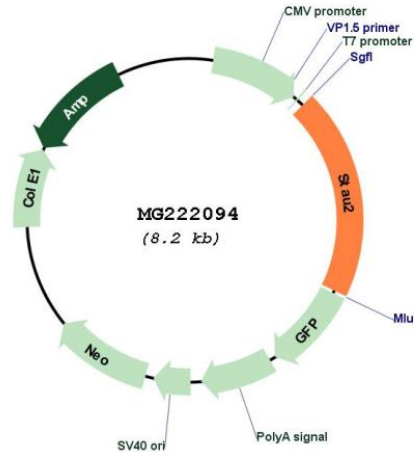
**Restriction Sites:**

Sgfl-MluI

Cloning Scheme:

Cloning sites used for ORF Shutting:



**Plasmid Map:**


**ACCN:** NM\_001111272

**ORF Size:** 1614 bp

**OTI Disclaimer:** The molecular sequence of this clone aligns with the gene accession number as a point of reference only. However, individual transcript sequences of the same gene can differ through naturally occurring variations (e.g. polymorphisms), each with its own valid existence. This clone is substantially in agreement with the reference, but a complete review of all prevailing variants is recommended prior to use. [More info](#)

**OTI Annotation:** This clone was engineered to express the complete ORF with an expression tag. Expression varies depending on the nature of the gene.

**Components:** The ORF clone is ion-exchange column purified and shipped in a 2D barcoded Matrix tube containing 10ug of transfection-ready, dried plasmid DNA (reconstitute with 100 ul of water).

**Reconstitution Method:**

1. Centrifuge at 5,000xg for 5min.
2. Carefully open the tube and add 100ul of sterile water to dissolve the DNA.
3. Close the tube and incubate for 10 minutes at room temperature.
4. Briefly vortex the tube and then do a quick spin (less than 5000xg) to concentrate the liquid at the bottom.
5. Store the suspended plasmid at -20°C. The DNA is stable for at least one year from date of shipping when stored at -20°C.

**RefSeq:** [NM\\_001111272.1](#), [NP\\_001104742.1](#)

**RefSeq Size:** 2759 bp

**RefSeq ORF:** 1617 bp

**Locus ID:** 29819

**UniProt ID:** [Q8CJ67](#)

**Cytogenetics:** 1 A3

**Gene Summary:** RNA-binding protein required for the microtubule-dependent transport of neuronal RNA from the cell body to the dendrite. As protein synthesis occurs within the dendrite, the localization of specific mRNAs to dendrites may be a prerequisite for neurite outgrowth and plasticity at sites distant from the cell body (By similarity).[UniProtKB/Swiss-Prot Function]