

Product datasheet for **MG222048**

Akap1 (NM_009648) Mouse Tagged ORF Clone

Product data:

Product Type:	Expression Plasmids
Product Name:	Akap1 (NM_009648) Mouse Tagged ORF Clone
Tag:	TurboGFP
Symbol:	Akap1
Synonyms:	Akap; AKAP84; AKAP121; C76494; C81186; DAKAP1; S-AKAP84
Mammalian Cell Selection:	Neomycin
Vector:	pCMV6-AC-GFP (PS100010)
E. coli Selection:	Ampicillin (100 ug/mL)



[View online »](#)

**ORF Nucleotide
Sequence:**

>MG222048 representing NM_009648
 Red=Cloning site Blue=ORF Green=Tags(s)

TTTTGTAATACGACTCACTATAGGGCGGCCGGAATTCGTCGACTGGATCCGGTACCGAGGAGATCTGCC
 GCC**CGCATCGCC**

ATGGCAATCCAGTTGCGTTCGCTCTCCCTTGGCGTTGCCCGGAATGCTGGCCCTCCTTGCTGGTGGT
 GGTTTTCTCTCGTAAAAAGATCGGCTCAGCAGCAGTGATAAGCAGGTGGAGACTGAAGTTGGCCC
 TGCCATCAAGGACCGACGGCTCAGTGAAGAGCCGTGCTCGAGTCTGTCTGTGGCCCCACTGTCACA
 CAGCCTCTGGAAGGGAAGAGCAGCGCTGTGTGGACAAGCCTTCTACAGAGCCCCGGCCTTGGCGAGGA
 CTCGCCAGGTTGACGAAGATCAGAGTCTCAGGCAACCTCCCCAGGTTGCAGACACGAGGTGCGAGCC
 AGGACCGTGCAGAGATGAGATCGCCAAAGTGGAACTCTCCCTGATGGGGGACAAAGCCAAATCTATTCT
 CTTGGATGTCCGCTTCTCCAAAGGATGCGTCTTCCCCTATGAAGCAGTGGAAGGTGTAAGCAGGAGT
 CCGCACTGGGCAAGACTCCTGGAAGAGGCTGGCAAGCCCGTATGCGGCCCTGGAGAGAAAGCGAGAGA
 GACAGGTGGGACAGAGGGGACTGGAGATGCTGTGTTGGGGGAAAATGTATCTGAGGAAGGCCATTGTCC
 CAGGAGTGTCTCAGAAGTGGAGAAGAGTGAGTTCCAATCCTGGCCCCGGGGGAGGTGAGGGAGAAG
 AGGTGAGCCATGGCCCCCACAGGTAGCTGAACTTTTAAAGAAGGAAGAATATATTGTTGGGAAGTTGCC
 GAGTAGCTTTGTGGAGCCAGTTCCTCAGAGCCGGTAAAGGACGAGGATGCGTTGGAACCCAGGTCAAA
 GGTAGCAGCAATACTTCGGATAGAGACCTGGCTGGAGAGCTGGACAAAGACGAGACCGTGCCTGAAAATG
 ACCAGATTAAGCAGGCTGCCTTCCAGCTCATCTCCAGGTGATCTTGAAGCAACTGAAGAGTTTCGGGC
 CACCACAGTGGCAAGACTGTGGACAAGTGCACCAACCTCGGCCACTCAGCCTAAGGGGAAGGAGGAG
 AGCTGTGTTCCAGCCAGCCAGGAACTAGCTTGGGACAAGACACCTCAGATCCTGCTTCCACCAGAACAG
 GTGCCACTGCCAGCCCTTCAGCAGAAGCTTGCACCAAAAGACCTATGTAAGCTGTCTCAGCAGCCCTCT
 GTCAGGCCCCACCAAGGACCAGAAGCCAAAGAACTCTGCACATCACATCTCCCTGGCTCCCTGCCACCCG
 CCAGTCAACCCAGAGGCACTCTGGAGGGGCAAGTAACCCGAGAGGTGATGACAACCTTGTGCGCT
 GTATGGCCAACAACAGCCAGAGTGTCTTTAGTTAGCTCCTTGGGGCAGTGCTCAGATCCTGTCAGTAC
 TTCGGGGCTTGAAGACTTTCACAGAGACCATCTCAAGCTCCGGAGACAAAGCTATGACCCCACTG
 CCAGTCACTACTCAGCCCTTTCAGCAACGGGGTGTGAAGGAGGAGCTGTCAGACTTAGGGACCGAGGATG
 GATGGACCATGGATACAGAAGCAGATCACTCAGGAGGTTCTGACGGGAACAGTATGGATTAGTGGATAG
 CTGTTGCGGGCTTACCAAGCCCGATAGCCCCAGAGTGTCCAGGCAGGCTCAACCCCTAAGAAGGTTGAC
 CTTATCATCTGGGAGATCGAGGTGCCAAAGCACTTAGTTGGTCGACTGATTGGCAAGCAGGGACGGTACG
 TGAGTTTTCTGAAGCAGACATCTGGTGCCAAGATCTACATCTCCACCCTGCCTTACACACAGAACATCCA
 GATCTGCCACATAGAAGGCTCTCAGCACCATGTAGACAAAGCTCTGAACTTGATTGGGAAGAAGTTAAG
 GAACTGAACCTCACCAATATCTATGCGCCACCACTGCCTTCGCTGGCACTGCCTTCTTGGCGATGACGT
 CTTGGCTCATGCTGCCTGATGGTATCACTGTGGAAGTCACTGCGTCAACCAGGTCAATGCTGGGCACCT
 ATTTGTCCAGCAGCACACACCCACCTTCCATGCACTGCGCAGTCTGGACCAGCAGATGTACCTCTGT
 TACTCTCAGCCTGGAATCCCACTTGGCCACCCAGTGGAAATCACGGTTATCTGCGCTGCCCTGGTG
 CGGACGGGGCTGGTGGCGAGCCCAAGTAGTGGCTTCCATGAGGAGACCAATGAGGTGGAGATTCGCTA
 CGTGGACTATGGTGGATATAAGAGAGTGAAGTGCAGTGTCTCCGCAAAATTAGGTCTGACTTTGTGACC
 CTGCCATTCCAAGGAGCAGAAGTCTTCTGGACAGTGTGGTTCCCTGTGACAGATGATCATTTTTACAC
 CGGAGGCAGACGAGCCATGAGTGAAGTACAGCAATACAGCACTGTTGGCCAGGTGACAAGCTACAG
 TGCGACTGGCCTTCTCTGATTAGCTATGGAGTGTGGTTGGAGATGAAGTGGTGTGATAAACCGGTCG
 CTGGTGGAGCGAGGCCTTGCACAGTGGTAGACAGCTACTATGCCAGCCTC

ACGCGTACGCGGCCGCTCGAG – GFP Tag – GTTTAA

Protein Sequence: >MG222048 representing NM_009648
Red=Cloning site Green=Tags(s)

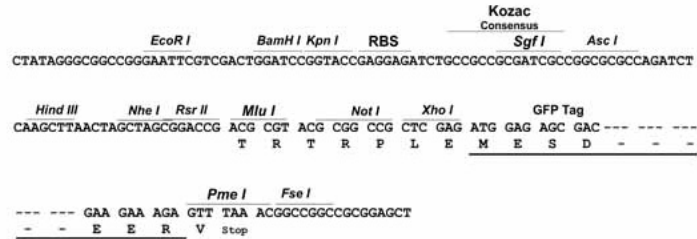
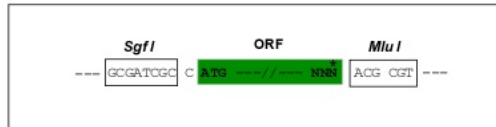
MAIQLRSLFPLALPGMLALLGWWFFSRKKDRLLSSSDKQVETLKVGPAAIKDRRLSEEACPGVLSVAPT
VTQPPGREEQRCVDKPSTEPLALPRTRQVRRRSESSGNLPSVADTRSQPGPCRDEIAKVELSLMGDKAKSIP
LGCPLLPKDAFPYEAVRCKQESALGKTPGRGWPSPYAASGEKARETGGTEGTGDAVLGENVSEGLLS
QECVSEVEKSEFPILAPGGEGEEVSHGPPQVAELLKKEEYIVGKLPSSFVEPVHSEPVKDEDALEPQVK
GSSNTSDRDLAGELDKDETVPENDQIKQAAFQLISQVILEATEEFRATTVGKTVAQVHPTSATQPKGKEE
SCVPASQETSLGQDTSDPASTRTGATASPSAEALPPKTYVSSLSPLSGPTKDQKPKNSAHHISLAPCPP
PVTPQRQSLEGASNPRGDDNFVACMANNQSIVLSSVSSLGQCSDPVSTSGLEDSCTETISSSGDKAMTPPL
PVSTQPFNGVLKEELSDLGTEDGWTMDTEADHSGGSDGNSMDSVDSGCCGLTKPDSQSVQAGSNPKKVD
LIIWEIEVPKHLVGRLLIGKQGRYVSFLKQTSKAKIYISTLPYTQNIQICHIEGSQHHVDKALNLIGKKFK
ELNLNIIYAPPLPSLALPSLPMTSWLMLPDGITVEIVVNQVNAGHLFVQQHTHTPFHALRSLDQQMYLC
YSQPGIPTLPTPVEITVICAAPGADGAWWRAQVVASYEETNEVEIRYVDYGGYKRVKVDVLRQIRSDFT
LPFQGAEVLLDSVVPLSDDHFSPEADAAMSEMTGNTALLAQVTSYSATGLPLIQLWSVVGDEVVLI
NRS LVERGLAQWVDSYYASL

TRTRPLE - GFP Tag - V

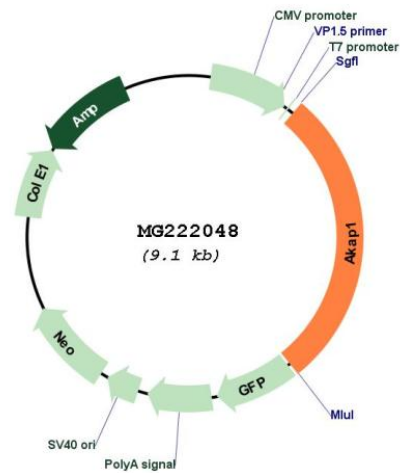
Restriction Sites: Sgfl-MluI

Cloning Scheme:

Cloning sites used for ORF Shutting:



Plasmid Map:



ACCN:	NM_009648
ORF Size:	2571 bp
OTI Disclaimer:	The molecular sequence of this clone aligns with the gene accession number as a point of reference only. However, individual transcript sequences of the same gene can differ through naturally occurring variations (e.g. polymorphisms), each with its own valid existence. This clone is substantially in agreement with the reference, but a complete review of all prevailing variants is recommended prior to use. More info
OTI Annotation:	This clone was engineered to express the complete ORF with an expression tag. Expression varies depending on the nature of the gene.
Components:	The ORF clone is ion-exchange column purified and shipped in a 2D barcoded Matrix tube containing 10ug of transfection-ready, dried plasmid DNA (reconstitute with 100 ul of water).
Reconstitution Method:	<ol style="list-style-type: none">1. Centrifuge at 5,000xg for 5min.2. Carefully open the tube and add 100ul of sterile water to dissolve the DNA.3. Close the tube and incubate for 10 minutes at room temperature.4. Briefly vortex the tube and then do a quick spin (less than 5000xg) to concentrate the liquid at the bottom.5. Store the suspended plasmid at -20°C. The DNA is stable for at least one year from date of shipping when stored at -20°C.
RefSeq:	NM_009648.2 , NP_033778.2
RefSeq Size:	3721 bp
RefSeq ORF:	2574 bp
Locus ID:	11640
UniProt ID:	O08715
Cytogenetics:	11 C
Gene Summary:	Differentially targeted protein that binds to type I and II regulatory subunits of protein kinase A. Anchors them to the cytoplasmic face of the mitochondrial outer membrane or allows them to reside in the endoplasmic reticulum. Does not contain the classic KDEL endoplasmic reticulum-targeting sequence. This explains how it is able to switch its localization, either being in the endoplasmic reticulum or in the mitochondria depending on which N-terminal part begins the isoform. The longest N-terminal part only present in isoform 2 and isoform 4 acts as a suppressor of mitochondrial targeting and as an activator of recessive endoplasmic reticulum targeting motif.[UniProtKB/Swiss-Prot Function]