

Product datasheet for **MG222010**

Palm3 (NM_028877) Mouse Tagged ORF Clone

Product data:

Product Type:	Expression Plasmids
Product Name:	Palm3 (NM_028877) Mouse Tagged ORF Clone
Tag:	TurboGFP
Symbol:	Palm3
Synonyms:	4432412L15Rik; AL024300
Mammalian Cell Selection:	Neomycin
Vector:	pCMV6-AC-GFP (PS100010)
E. coli Selection:	Ampicillin (100 ug/mL)



[View online »](#)

ORF Nucleotide Sequence:

>MG222010 representing NM_028877
 Red=Cloning site Blue=ORF Green=Tags(s)

TTTTGTAATACGACTCACTATAGGGCGGCCGGAATTCGTCGACTGGATCCGGTACCGAGGAGATCTGCC
 GCC**CGGATCGCC**

ATGGCTCTGCAGACCCCGTGTGTCTCCGGCCACACCCACGGTTCATGGCGGAGAGCGCCCTCTATCGGC
 AGCGGCTGGAGGTCATCGCTGAGAAGCGCGGCTGCAGGAGGAGATCGGGCCCGCGTCCGAGCTGGA
 GGAGGAGAACTCCGCTGGAGCGGCTCAAGAGAAATCTCTCCGAGAACGTTGGCTCATGGACGGGCA
 GCTGAAGGGCCAGAACGGCCGGAGGAACCCGCCTCCAAGGACCCACAGTCGCTGAGGGACAGGCCAGG
 CTCGAATTCGCAACCTGGAAGACAGTTTGTCTTCACTCCAGTCACAGCTACAGCTGTTGCAAAGTGCCTC
 CACAGGTCTCAACACAGACCTGCTGGTAGGCCCGCTGGCGCAGAGAGGGTCCCGTCTCTCTCAG
 TCTGCCATGGAAGCAGCTCTACCGCCCGACTGATGTGACAAGCGAATTCCCTGCCAGATGCTCCAG
 TGGCATGTCCCCTGAGTCTCTTCTGATCCCAGGGAGGAGTCGATTGCGGTTCTACCAGCTCGAGGCC
 ATCCACTGAAGCTATAGGGACATCTTCAGAAGCCAATGGCCCTGCCCTGGGCACAGCCCTCTCCAGAG
 CAGCTGAGTCTAGGGGTGTCGAGTGTACTAAGGCCAAAGGAGATGGTGCAGTGGAGGTGGTTTGGGCTG
 GGCTTAGAGCCACTGAGAACAGTGCCACAGGCCCCACAGATGTGGAGCTGGAGGCTAAGGTGGAAGAAGT
 GGTCTGGAGGCCATTGGGGCCAGGCAGGGCACCAGCAGCCCTGAGCTCCCACTTGGGTGAAGGAGGGC
 AGGGGTGTAGTGAAGTGGTCTGGGAGGGGCTGGGAGGCAGGGATCTTGATGTCACAGGGGAGTCAGGCA
 GGGATGCAGAGGCCACACACACACAGTCCAGGAGACTCCAGGAGCAATTTGAGGCTGAAACTTGCAGAAA
 AGAAGAAGGTGCTCCAGAGATAGTCTTGAGGGTGTGGGAGGGAGGTCCTGGAGTAGAGGAGGGATCC
 TTCATTTGGGTGGAGAGAGTGGCCCTCAGCGAAGACTGGGAGGAGATTTGATGGAGGGTTTGAAGCAC
 CGCAGGGGGCAGGGTCTGCAGGAGAACCCTGAGGCTTTGATTGGAGCACAGCCAGAGGAGGTGAAGCCTC
 CTGGGAGGTAGAGAAGAGAGAAGTAGAGAAAGTTGAGGGCATAGAAGAGAAGGGAAGGGCAGAAAAGCTC
 GGGCAGAGAGGGAGGATGGTGTAGCTGTGCTGCCAGATGAGACCCAGGGAAGAGAGGAAAACGAGGCAG
 AAAAGGTAGAGAGAAAAGACAGTGAAGGGCCCTTTCCAGCAGAGATAGCAACAGATGAGGAAAAGTGGGA
 GGTGAAAACGACGGAAGGTGAAGAGTCGTTGGAAGTAGAAAAGGGAGGTGAGGCAGAGCCGGTCACTACT
 GAGAAGCCATTGGTGACAGAAAAAAGCCAGAGGGCTCACTGGAGACAGAGAGAAAAGGAAGTGAAGTGC
 CATTGGACCAGGAGAAAAGATGGTGAAGGCTCATTGGACAGAGAATCAAAAACAAGTGAAGTACTATTGGA
 TGGAGAGATAGGAGATAAGAGCTCATTGGATGAAACTAAAGGAAGCAAGAACTATTAGATGAGAAGACA
 GGAGGTGAGGGCTCATTGGATGAAGAAGCTGAAGGAAGTAAAGAACTATTGGACAGGAGGCAGATGGCA
 TCGAGCCATTCTGAGGTGGACAAGACCTCAGGCGCCAAGGATGATGTGAGTCCAGAAGAGCAAGGCAA
 AGCCAACGAAGGAGCAGAGTTCAGGCGGAGGATGCCAGCCACCAGGAGCCACTGTTTGTGTCCAGGAC
 GAGCCAGGTGAGGAGCAAGGACAGCAAGAACCAGAGAAGCAAGAAGGCTGGTAGAAGGGGCAGCCA
 GTAAGCCTGAGCCCTGTACTGAGCGAGAGGGTCCCCAGGGGATGCTACCCTGCTCTAGCTGAGACCCC
 AGCCCCGAGCAGCCTGTGGAAGCCAGCCACTGCTCCATCAGGAAGCGTCCAGCACTAACCTGGTGAC
 CACCCTGCACCTACGTATGCCCTGCCAGCAGCTTGAGCTGGCTGAGGCCAAAGAAGCTAGTGGTCCCA
 AGCAGAAGACGTGCCAGTGTGTGGTCATG

ACGCGTACGCGGCCGCTCGAG – GFP Tag – GTTTAA

Protein Sequence: >MG222010 representing NM_028877
 Red=Cloning site Green=Tags(s)

MALQTPVLSPATPTVMAESALYRQRLEVIAEKRRLEQEEIGAARRELEEEKLRVERLKRKSLRERWLM DGA
 AEGPERPEEPASKDPQSPEGQAQARIRNLEDSLFLSQSLQLLQSASTGAQHRPAGRPAPWRREGPRPLSQ
 SAMEAAPTAPTDVDRKRTSLPDAPVGMSPESPSPDPREESIAVLPASRPSTEAITGSSEANGPCPGHSPLPE
 QLSLGVSSVTKAKGDGAVEVVWAGLRATENSATGPTDVELEAKVVEVVLEAIGARQGTSSPELPTWVKEG
 RGVVEVVWEGLGGRDLDTGESGRDAEATHSSRRLQEQFEAETCRKEEGASRDSLEGVGGGPGVVEEGS
 FIWVERVALSEDWEEILMEGLEAPQGAGSAGEPEALIGAQPRGGEASWEVEKREVEKVEGIEEKGRAEKL
 GAEREDGVAVLPDETQGREENEAEKVERKDSEGPFAEIAATDEEKWEVKTTTEGEESLEVEKGGAEAPVTT
 EKPLVTEKKPEGSLETERKGGSEMPDQEKDGGESLDRESKTTIILLDGEIGDKSSLDETKGSKLLDEKT
 GGEGSLDEEAEGSKLLDREADGIEPFSEVDKTSKAKDDVSPPEQKANEAEFQAEDASPPGATVCVQD
 EPRSEEQQQPEKQEGLEGAASKPEPCTEREGPPGDATLLLAETPAPEQPVESQPLLHQEASSTNPGD
 HPAPTYAPAQQLELAEAKEASGPKQKTCQCCVVM

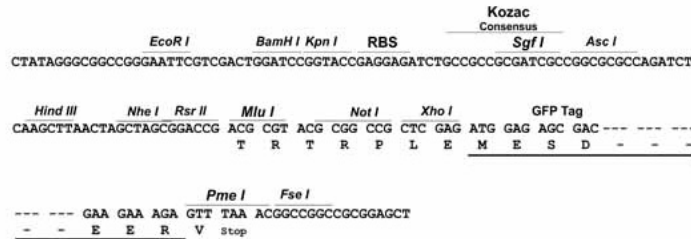
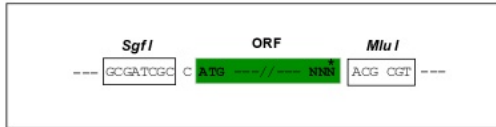
TRTRPLE - GFP Tag - V

Restriction Sites:

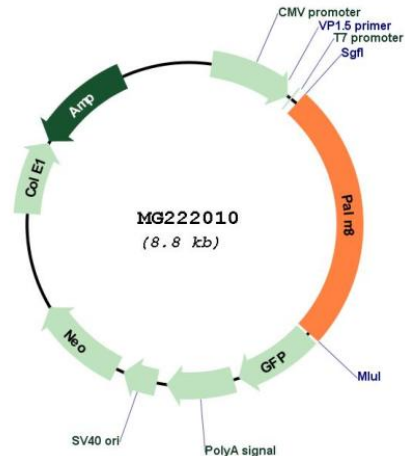
SgfI-MluI

Cloning Scheme:

Cloning sites used for ORF Shutting:



Plasmid Map:



ACCN: NM_028877

ORF Size: 2202 bp

OTI Disclaimer: The molecular sequence of this clone aligns with the gene accession number as a point of reference only. However, individual transcript sequences of the same gene can differ through naturally occurring variations (e.g. polymorphisms), each with its own valid existence. This clone is substantially in agreement with the reference, but a complete review of all prevailing variants is recommended prior to use. [More info](#)

OTI Annotation: This clone was engineered to express the complete ORF with an expression tag. Expression varies depending on the nature of the gene.

Components: The ORF clone is ion-exchange column purified and shipped in a 2D barcoded Matrix tube containing 10ug of transfection-ready, dried plasmid DNA (reconstitute with 100 ul of water).

Reconstitution Method:

1. Centrifuge at 5,000xg for 5min.
2. Carefully open the tube and add 100ul of sterile water to dissolve the DNA.
3. Close the tube and incubate for 10 minutes at room temperature.
4. Briefly vortex the tube and then do a quick spin (less than 5000xg) to concentrate the liquid at the bottom.
5. Store the suspended plasmid at -20°C. The DNA is stable for at least one year from date of shipping when stored at -20°C.

RefSeq: [NM_028877.1](#), [NP_083153.1](#)

RefSeq Size: 2449 bp

RefSeq ORF: 2205 bp

Locus ID: 74337

UniProt ID: [A2TIV2](#)

Cytogenetics: 8 C2

Gene Summary: ATP-binding protein, which may act as a adapter in the Toll-like receptor (TLR) signaling.
[UniProtKB/Swiss-Prot Function]