

## Product datasheet for **MG221967**

### **Rbfox2 (NM\_001110827) Mouse Tagged ORF Clone**

#### **Product data:**

Product Type:	Expression Plasmids
Product Name:	Rbfox2 (NM_001110827) Mouse Tagged ORF Clone
Tag:	TurboGFP
Symbol:	Rbfox2
Synonyms:	Fbm2; Fxh; Hrnbp2; Rbm9
Mammalian Cell Selection:	Neomycin
Vector:	pCMV6-AC-GFP (PS100010)
E. coli Selection:	Ampicillin (100 ug/mL)



[View online »](#)

**ORF Nucleotide Sequence:**

>MG221967 representing NM\_001110827  
 Red=Cloning site Blue=ORF Green=Tags(s)

TTTTGTAATACGACTCACTATAGGGCGGCCGGGAATTCGTCGACTGGATCCGGTACCGAGGAGATCTGCC  
 GCC**GCGATCGCC**

ATGGCGGAAGCGGCCAGGCGCAGCAGCAGCCGCCTCAGCTCGGGCCCGCGCTGCCGCCGGGGCATGA  
 AGCGGGAGTCGGAGGTGGAGTTGCCGGTGCCCGAGCGGGGCGACGACCGACCCGAGCCCGCCTGAGCAA  
 GCGGCCACGCACAGAGGAGGCGGCCGACGGCGGGATGCAGAACGAGCCACTGACCCCGGGTTATCATGGA  
 TTCCAGCAAGGGATGGCCAGGTAACAGGAGCCAACAACAACCTCTGACGCAATGTTTCAGCCTTTTA  
 CTACCATCCCCTCCACCACCTCCACAAAATGGAATTCACAGAAATATGGAGTGCCACACACTCAGGA  
 CTATGCCGGCCAGACCAGTGAACATAACCTGACCCTCTACGGGAGTACGCAGCCTCATGGAGAACAGAGT  
 AGCAATTCACCCAGCAACCAGAATGGATCTCTACGCAGACAGAAGGTGGAGCACAGACAGACGGACAAC  
 AGTCACAGACACAAAGTAGTAAAATTCAGAGAGTAAATCTACGCCAAGCGACTACATGTCTTAATAT  
 TCCCTTCCGCTTCCGAGACCCTGACCTCCGGCAGATGTTTGGGCAGTTTGGCAAAATCCTAGATGTGAA  
 ATAATCTTTAATGAGCGCGGCTCCAAGGGATTCGGGTTCGTAACCTTCGAGAATAGTGCTGATGCAGACA  
 GGGCCAGGGAGAAATGCACGGCACCGTGGTAGAGGGCCGTAATAATGCAACAGCAGCAG  
 GGTGATGACCAACAAGAAGATGGTACGCCATATGCAAAATGGCTGGAAGTTAAGCCAGTAGTTGGAGCT  
 GTGATGGTCTGAGTTATATGCAGCATCCAGCTTCAAGCTGATGTGTCCTTAGGCAATGAGGCGGCTG  
 TGCCCTTGTGAGGAAGAGGAGGCATCAACACTTACATCCCTCTAATCATTCTGGCTTCCCTTACCCAAC  
 TGCAGCCACCACGGCAGCTGCTTCCGAGGAGCCCATCTGAGGGGAGAGGGCGGACAGTGTATGGTGCA  
 CTGACCTCTATGGTGGATATGCAGCCTACAGATATGCACAGCCTGCTACTGCAACCCGAGCCACAGCTGC  
 TGCAGCCGCTGCAGCCGCTTACAGCGACGGTTACGGCAGGGTGTACACAGCTGACCCCTACCATGCCCTC  
 GCCCTGCCGCCAGCTATGGAGTTGGCGCTGTGGCGAGTTTGTACCGAGGTGGCTACAGCCGATTTGCC  
 CCTAC

**ACGCGT**ACGCGGCCGCTCGAG - GFP Tag - GTTTAA

**Protein Sequence:**

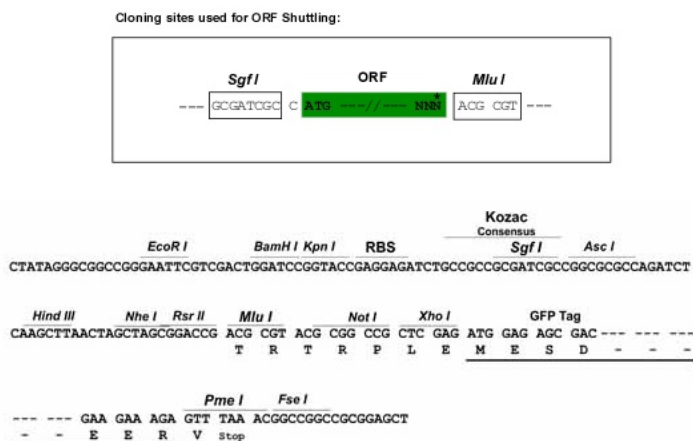
>MG221967 representing NM\_001110827  
 Red=Cloning site Green=Tags(s)

MAEGGQAQQPPQLGPGAAARGMKRESEVELPVPGAGADGPEPGLSKRPRTEEAADGGMQNEPLTPGYHG  
 FPARDGQGNQEPTTTPDAMVQPFITIPFPPPPQNGIPIEYGVPHQTQDYAGQTSEHNLTLYGSTQPHGEQS  
 SNSPSNQNGSLTQTEGGAQTDGQSQTSSENSESKSTPKRLHVSNIPIFRFRDPLRQMFQGFKILDVE  
 IIFNERGSKGFVTFENSADADRAREKLHGTVEGRKIEVNNATARVMTNKKMVTPIYANGWKLSPVVGA  
 VYGPELYAASSFQADVSLGNEAAVPLSGRGGINTYIPLIIPGFPYPTAATTAFAFRGAHLRGRRTVYGA  
 VRAVPPTAIPAYPGVVYQDGFYADLYGGYAARYAQPATATAATAAAAAAAYSVDGYGRVYTADPYHAL  
 APAASYGVGAVASLYRGGYSRFAPY

**TRTRPLE** - GFP Tag - V

**Restriction Sites:**

SgfI-MluI

**Cloning Scheme:**


**ACCN:** NM\_001110827

**ORF Size:** 1335 bp

**OTI Disclaimer:** The molecular sequence of this clone aligns with the gene accession number as a point of reference only. However, individual transcript sequences of the same gene can differ through naturally occurring variations (e.g. polymorphisms), each with its own valid existence. This clone is substantially in agreement with the reference, but a complete review of all prevailing variants is recommended prior to use. [More info](#)

**OTI Annotation:** This clone was engineered to express the complete ORF with an expression tag. Expression varies depending on the nature of the gene.

**Components:** The ORF clone is ion-exchange column purified and shipped in a 2D barcoded Matrix tube containing 10ug of transfection-ready, dried plasmid DNA (reconstitute with 100 ul of water).

**Reconstitution Method:**

1. Centrifuge at 5,000xg for 5min.
2. Carefully open the tube and add 100ul of sterile water to dissolve the DNA.
3. Close the tube and incubate for 10 minutes at room temperature.
4. Briefly vortex the tube and then do a quick spin (less than 5000xg) to concentrate the liquid at the bottom.
5. Store the suspended plasmid at -20°C. The DNA is stable for at least one year from date of shipping when stored at -20°C.

**RefSeq:** [NM\\_001110827.2](#)

**RefSeq Size:** 7036 bp

**RefSeq ORF:** 1338 bp

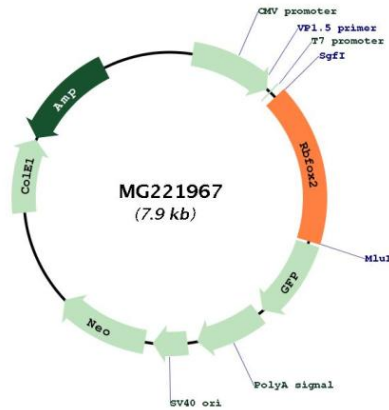
**Locus ID:** 93686

**UniProt ID:** [Q8BP71](#)

**Cytogenetics:** 15 D3

**Gene Summary:**

RNA-binding protein that regulates alternative splicing events by binding to 5'-UGCAUGU-3' elements. Prevents binding of U2AF2 to the 3'-splice site. Regulates alternative splicing of tissue-specific exons and of differentially spliced exons during erythropoiesis. Seems to act as a coregulatory factor of ER-alpha (By similarity).[UniProtKB/Swiss-Prot Function]

**Product images:**


Circular map for MG221967