

Product datasheet for **MG221949**

Alk (NM_007439) Mouse Tagged ORF Clone

Product data:

Product Type:	Expression Plasmids
Product Name:	Alk (NM_007439) Mouse Tagged ORF Clone
Tag:	TurboGFP
Symbol:	Alk
Synonyms:	CD246; Tcrz
Mammalian Cell Selection:	Neomycin
Vector:	pCMV6-AC-GFP (PS100010)
E. coli Selection:	Ampicillin (100 ug/mL)
ORF Nucleotide Sequence:	>MG221949 representing NM_007439 Red=Cloning site Blue=ORF Green=Tags(s)

TTTTGTAATACGACTCACTATAGGGCGGCCGGAATTCGTCGACTGGATCCGGTACCGAGGAGATCTGCC
GCC**CGATCGCC**

ATGGGAGCTGCTGGGTTCTGTGGCTGCTGCCTCCACTGCTTTTGGCAGCAGCCTCGTACTCCGGAGCTG
CAACCGATCAGCGCGGGTTCCCCAGCCTCAGGGCTCCTCTGCAGCCCCGGGAGCCGCTCAGTTATTC
GCGCCTGCAGAGGAAGAGTCTGGCAGTGGACTTCGTTGTACCCTCGCTTCCGCGTCTATGCCCGAGAC
CTGCTGTACCGCAGCCACGGTCCCCCTCGGAGCCGAGGCTGGCGGGCTGGAGGCGGGGATCACTGG
CCCTGGATTGTGAGCCTCTGCTCAGGCTGCTGGGGCCACTGCCTGGAATCTCCTGGCAGATGGAGCCAG
TTCTCCTAGTCCCGAGGCGGGTCCGACGCTGTCCAGGGTCTGAAGGGAGGCTCGGTGCGCAAGCTCAGG
CGTGCCAAACAGCTGGTCTGGAGCTGGGCGAGGAGACGATTCTTGAAGGCTGTATTGGTCCCCCAGAGG
AGGTAGCGGCTGTGGGATACTCCAGTTCAACCTCAGCGAGCTGTTTCCAGCTGGTGGATTCTCCACGGCGA
AGGGAGGCTGAGGATCCGCTGATGCCTGAGAAGAAGGCATCGGAAGTGGGACGGGAGGGAAGGCTATCC
AGTGCGATCCGAGCCTCCAGCCCCGCTTCTCTCCAGATCTTCCGGACGGGACACAGCTCCATGGAGT
CACCTCAGAAACGCCTTCTCCTCTGGTACCTCATGTGGAATCTGACCTGGACGATGAAAGACTCCTT
CCCTTTCCCTTCCACCCGAGTCGATATGGTCTGGAGTGCAGCTTTGACTTCCCTGTGAGCTGGAATAT
TCTCCTCCCCTGCACAACCACGGGAATCAGAGCTGGTCTGGCGCCATGTGCCCTCCGAGGAGGCCCTCGA
GGATGAACTTGCTGGATGGGCCAGAGGCAGAGCATTCTCAAGAGATGCCAGAGGCTCCTCCTCCTCCT
GAACACCTCTGCAGATCCAAGCATACCTTCTGAGCCATGGATGAGGAGCAGTGTGATCACTGCACA
CTGGCTGTCTCCGTGCACAGACATCTACAGCCTTCGGGGAGATATGTTGCCAGCTCCTACCCACAACG
AAGCTGGAAGAGAGATTCTTTGGTGCCACCCAGGGAAGCATGGCTGGACAGTGTGCAGGGGAGAGT
CGGGCGCCAGCAAACCCATTTGAGTGGCTCTGGAATACATCTCCAGTGGCAACCGAGCTTGTGCGCG
GTGGATTTCTTTGCCCTGAAGAACTGCAGTGAAGGACATCCCCAGGCTCCAAGATGGCATTGCAGATTT
CCTTCACTTGTGGAATGGACCGTCTCCAGCTCGGGCAAGCCTGTGATTTCCACCAGGACTGTGCCCA
AGGAGAAGATGAGGGCCAGCTGTGCAGTAACTTCTGCTGGATTTACTGTAACTTGAAATGGCTTC



[View online »](#)

TGTGGCTGGACCCAAAGTCCACTCTACCCCATATGCCCCGGTGGCAAGTGAGGACCCTAAGAGATGCC
 ATCCCAGGGCCACCAAGGCCGTGCCCTGTTGCTCAGCACCCTGACATCCTCGCTTCTGAAGGTGCAAC
 AGTGACCAGTGCCACCTCCCTGCACCAATGAAAAATTCTCCTGTGAGCTCCGCATGTCCTGGCTCATC
 CGCGGGTTTTGAGAGGAAACGTATCTCTGGTGTGGTGGAGAACAAAACCGGAAAGGAGCAAAGCCGGA
 CTGTCTGGCATGTCGCCACTGACGAAGGCTTAAGCCTGTGGCAGCATACAGTGTGTCCCTCCTCGATGT
 AACTGACAGGTTCTGGCTGCAGATAGTCACATGGTGGGGTCCAGGATCCAGGGCAACCGTGGGATTTGAC
 AACATTTCCATCAGCCTCGACTGCTACCTTACCATCAGTGGAGAGGAGAAAAATGTCCCTGAATTCAGTAC
 CCAAATCTAGAAATCTGTTTGGAAAAACCCAAACAAGGAGTCAAAATCCTGGGCAACATATCAGGACC
 AACTCCCATCTTCGACCCCTACAGTTCAGTGGCTGTTACCACAGTGTGGGGCCAGTGGACCTCATGGCCCC
 ACCCAGGCACAGTGCAACAACGCCTACCAGAATCCAACCTGAGCGTGGTGGGAAAGTGAAGGGCCCT
 TGAAGGGAGTCCAGATTTGAAAGTGCCAGCTACTGACACCTACAGTATCTCGGGCTACGGAGCAGCTGG
 CGGAAAGGTGGGAAAAACCATGATGCGGTCCCATGGCGTGTCTGTCTGGGCATCTCAATCTGGAG
 AAAGGTGACACACTCTACATCCTGTGCGTCCAGCAAGGGGAGGATGCCTGTCCAGGGCAAACCACTAA
 TCCAGAAAGTCTGTGTTGGTGGAGAACAATGTCATAGAAGAAGAGATCCGAGTGAACAGAAGCGTGCACGA
 GTGGGCAGGAGGAGGAGGAGTGGGGTGGAGCCACCTACGTGTTAAGATGAAAGATGGCGTGCCTGTA
 CCCTGATCATTGCAGCTGGTGGTGGTGGCAGGGCCTATGGGGCCAAGACAGAAACGTTCCACCCAGAGA
 GACTGGAGAGTAACTCCTCGGTTCTAGGGCTGAACGGCAATCCGGAGCCGACAGTGGTGGAGGGCGCTG
 GAATGATAAACAATCCTTCTGCTCTGGGCCGAAAGTCTTTGCTGGAGGGTGCCTCCGGAGGACATTCCTGC
 CCCCAGGCCATGAAGAAGTGGGGTGGGAGACAAGAGGGGGTTTCGGAGGGGGTGGAGGGGGTGTCTCT
 CAGGTGGAGGAGGCGGAGGATATAGTGGCAACGCAGCATCAAACAATGACCCCGAAATGGATGGGGA
 AGATGGGGTTTCTTTCATCAGTCCATTGGGTATCCTGTACACCCCGCCTAAAAGTGTGGAGGGCCAC
 GGGGAAGTGAATATCAAGCATTATCTAACTGCAGTCACTGCGAGGTAGACGAATGTACATGACCCCG
 AGAGCACAAAGTCATCTGCTTCTGTGATCATGGGACCTGCTGGCTGATGATGGTGTCTCTCTGATTGT
 GTCACCCACCCCGAGCCACCTGCGCTCTCATTGATCCTCTCCGTCGTGACCTCTGCCCTGGTGGCT
 GCCCTTGTCTGGCATTCTCCGGCATCATGATTGTGTACCGTCCGAAAGCACCAGGAGTTGCAGGCTATGC
 AGATGGAAGTGCAGAGCCCCGAGTATAAGCTGAGCAAGCTACGGACCTCGACCATCATGACCGACTACAA
 CCCCACCTACTGCTTCGCTGGCAAGACTTCTCCATCAGTACCTGAAAGAAGTGCACGGAAAAACATC
 ACACTCATCCGGGGCCTAGGCCATGGCGCATTGGGGAGGTGTATGAAGGCCAGGTGTCTGGAATGCCCA
 ATGACCCAAGCCCTCTACAAGTGGCTGTAAGACGCTGCCAGAAGTGTGTTGAGAACAAGATGAGCTGGA
 CTTTCTCATGGAAGCTCTGATCATCAGCAAATCAACCACCAGAATATTGTTCTGCTGCATCGGGTGTG
 CTACAAGCCCTGCCCGCTTCTCCTGTGGAAGTGTGCTGGCTGGCGGAGACCTCAAGTCTTCTCTCAGGG
 AGACACGCCCTCGCCGAACCAACCCACCTCCCTGGCCATGCTGGACCTTCTGCATGTGGCTCGGGACAT
 TGCTGTGGCTGTGAGTACCTAGAGGAGAATCACTTTATCCACCGGGATATTGCTGCTAGAAACTGTCTG
 TTGACCTGCCAGGAGCTGGAAGAATAGCAAAGATTGGAGACTTTGGGATGGCCCGAGATATCTACAGGG
 CCAGCTACTACCGAAAGGGAGGCTGCGCCATGCTGCCGGTCAAGTGGATGCCCTTGAAGCCTTCTGGA
 AGGGATATTTACCTCTAAAACAGACACATGGTCTTTGGAGTGTGCTATGGGAAATATTTTCTCTTGG
 TATATGCCGTACCCAGCAAGAGCAACCAGGAAGTCTGGAGTTGTACCAGCGGAGGACGGATGGACC
 CGCCTAAGAACTGCCCGGGCCTGTATACCGGATAATGACGCAGTGTGGCAGCATCAGCCTGAAGACAG
 ACCCAACTTCGCCATCATTTTGGAGAGGATCGAATACTGCACCCAGGACCCCGATGTGATCAACACAGCT
 CTGCCATCGAATACGGTCCAGTAGTAGAAGAGGAGGAGAAAGTGCCATGCGCCCCAAAGACCCCGAGG
 GGATGCCACCTTTGCTGGTGTCTCCCCAGCCTGCGAAGCACGAGGAGGCGTCCGACGCTCCCCAGCCCGC
 AGCCCTGACGGCACAGGCCATCGGTGAAGAAGCCCCGGTGCGGGTGCGGGCGCGGGTGC
 GGTGCCGGCCCGTGCCTGAGGTGCGGCCGATCGGGCCACGTGAACATGGCTTCTCTCAGCCCAACC
 CTCCCCGGAGCTGCACAAAGGCCCGGGATCCAGAAACAAGCCGACCGAGCCTGTGGAACCCACCTACGG
 CTGTTGGTTCACCGAGAAGCCTGCCAAAAGACCCATCCTCCGACGGCGCCAGCCGAGCGCGGGCA
 GGAGCGCGGAGGTTGGTGGACCGGGCGGGCGGGGCCCCGAGAGCCGAGGACGCGCTGCTGTAG
 AGCCATCGGCGTGTAGCGCCACCATGAAGGAGTGCCTGTTTCCAGGCTGCGCCACTTCCCTGCGGCAA
 TGTCAACTATGGTTACCAGCAACAGGGTCTCCCTTGAAGCCACAGCCGCGCCAGGGGACACCATGCTG
 AAAAGCAAGAATAAGGTCACCCAGCCGGGGCCC

ACGCGTACGCGGGCCGCTCGAG - GFP Tag - GTTTAA

Protein Sequence: >MG221949 representing NM_007439
 Red=Cloning site Green=Tags(s)

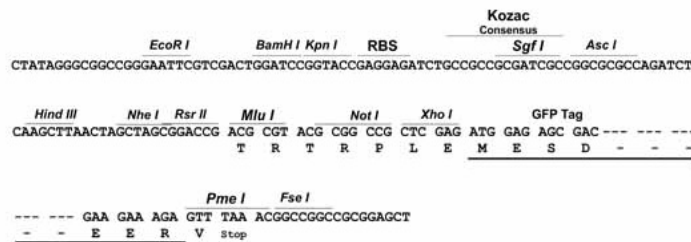
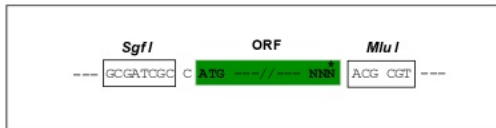
MGAAGFLWLLPPLLLAAASYSGAATDQRAGSPASGPPLQPREPLSYSRLQRKSLAVDFVVPVSLFRVYARD
 LLLPQPRSPSEPEAGGLEARGSLALDCEPLLRLGLPLGSIWADGASSPSPEAGPTLSRVLKGGSVRKLR
 RAKQLVLELGEETILEGCIGPPEEVAAVGILQFNLSLFSWWILHGEGRRLRIRLMPEKKASEVFGREGRLS
 SAIRASQPRLLFQIFGTGHSSMESPSETPSPPGTFMWNLTWTMKDSFPFLSHRSRYGLECSFDPFCELEY
 SPPLHNHGNQSWSRHVPSEEARMNLLDGPEAEHSQEMPRGSFLLLNTSADSKHTILSPWMRSSSDHCT
 LAVSVHRHLQPSGRYVAQLLPHNEAGREILLVPTPGKHGWTVLQGRVGRPANPFRVALEYISSGNRSLSA
 VDFFALKNCSEGTSPGSKMALQSSFTCWNGTVLQLGQACDFHQDCAQGEDEGQLCSKLPAGFYCNFENG
 CGWTQSPLSPHMPRWQVRLRDAHSQGHQGRALLSTTDILASEGATVTSATFPAMPKNPCELMSWLI
 RGVLRGNVSLVLVENKTGKEQSRVWHVATDEGLSLWQHTVLSLLDVTDRFWLQIVTWWGPGSRATVGF
 NISISLDCYLTIISGEEKMSLNSVPKSRNLFKKNPNKESKSWANISGPTPIFDPTVHWLFTTCGASGPHGP
 TQAQCNNAYQNSNLVSVVGSEGPLKGVQIWKVPATDTYSISGYGAAGGKGGKNTMMRSHGVSVLGIFNLE
 KGDTLYILVGGQGEDACPRANQLIQKVCVGENNVIEEEEIRVNRSVHEWAGGGGGGGGATYVFKMKDGVV
 PLIIAAGGGGRAYGAKTETFHPERLESNSVLGLNGNSGAAGGGGGWNDNTSLLWAGKSLEGAAGGHSC
 PQAMKKGWETRGGFGGGGGGCSGGGGGGYIGGNAASNNDPEMDGEDGVSFISPLGILYTPALKVMEGH
 GEVNIKHVYLNCSHCEVDECHMDPESHKVICFDHGTVLADDGVSCIVSPTPEPHLPLSLILSVVTSALVA
 ALVLAFSGIMIVYRRKHQELQAMQMEQLQSPYKLSKLRSTIMTDYNNPYCFAGKTSSISDLKEVPRKNI
 TLIRGLGHGAFGEVYEGQVSGMPNDPSPQLQAVKTLPEVCSEQDELDFLMEALIIISKFNHQINVRICIGV
 LQALPRFILLELMAGGDLKSFLRETRPRNPQTSAMLDDLHVARDIACGCQYLEENHF IHRDIAARNCL
 LTCPGAGRIAKIGDFGMARDIYRASYYRKGCCAMLPVKWMPPEAFMEGIFTSKTDTWSFGVLLWEIFSLG
 YMPYPSKSNQEVLEFVTSGGRMDPPKNCPPVYRIMTQCWQHQPEDRPNFAIILERIEYCTQDPDVINTA
 LPIEYGPVVEEEKVPMPKDPGEMPLLVSQPQAKHEEASAAPQPAALAPGPSVKKPPGAGAGAGAGA
 GAGPVPRGAADRGHVNMFAFSQPNPPPELHKGPGRNKPTSLWNPTYGSWFTEKPAKKTHTPPPGEAEPQARA
 GAAEGGTGPGAGPRRAEAALLLEPSALSATMKEVPLFRLRHFPCGNVNYGYQQGLPLEATAAPGDTML
 KSKNKVTQPGP

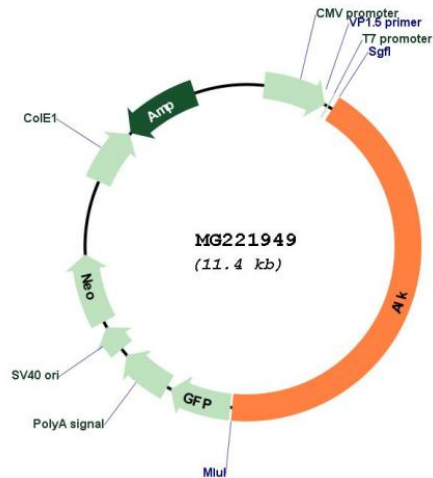
TRTRPLE - GFP Tag - V

Restriction Sites: Sgfl-MluI

Cloning Scheme:

Cloning sites used for ORF Shutting:



Plasmid Map:


ACCN: NM_007439

ORF Size: 4863 bp

OTI Disclaimer: The molecular sequence of this clone aligns with the gene accession number as a point of reference only. However, individual transcript sequences of the same gene can differ through naturally occurring variations (e.g. polymorphisms), each with its own valid existence. This clone is substantially in agreement with the reference, but a complete review of all prevailing variants is recommended prior to use. [More info](#)

OTI Annotation: This clone was engineered to express the complete ORF with an expression tag. Expression varies depending on the nature of the gene.

Components: The ORF clone is ion-exchange column purified and shipped in a 2D barcoded Matrix tube containing 10ug of transfection-ready, dried plasmid DNA (reconstitute with 100 ul of water).

Reconstitution Method:

1. Centrifuge at 5,000xg for 5min.
2. Carefully open the tube and add 100ul of sterile water to dissolve the DNA.
3. Close the tube and incubate for 10 minutes at room temperature.
4. Briefly vortex the tube and then do a quick spin (less than 5000xg) to concentrate the liquid at the bottom.
5. Store the suspended plasmid at -20°C. The DNA is stable for at least one year from date of shipping when stored at -20°C.

RefSeq: [NM_007439.2](#), [NP_031465.2](#)

RefSeq Size: 5918 bp

RefSeq ORF: 4866 bp

Locus ID: 11682

UniProt ID: [P97793](#)

Cytogenetics: 17 43.77 cM

Gene Summary: Neuronal receptor tyrosine kinase that is essentially and transiently expressed in specific regions of the central and peripheral nervous systems and plays an important role in the genesis and differentiation of the nervous system. Transduces signals from ligands at the cell surface, through specific activation of the mitogen-activated protein kinase (MAPK) pathway. Phosphorylates almost exclusively at the first tyrosine of the Y-x-x-x-Y-Y motif. Following activation by ligand, ALK induces tyrosine phosphorylation of CBL, FRS2, IRS1 and SHC1, as well as of the MAP kinases MAPK1/ERK2 and MAPK3/ERK1. Acts as a receptor for ligands pleiotrophin (PTN), a secreted growth factor, and midkine (MDK), a PTN-related factor, thus participating in PTN and MDK signal transduction. PTN-binding induces MAPK pathway activation, which is important for the anti-apoptotic signaling of PTN and regulation of cell proliferation. MDK-binding induces phosphorylation of the ALK target insulin receptor substrate (IRS1), activates mitogen-activated protein kinases (MAPKs) and PI3-kinase, resulting also in cell proliferation induction. Drives NF-kappa-B activation, probably through IRS1 and the activation of the AKT serine/threonine kinase. Recruitment of IRS1 to activated ALK and the activation of NF-kappa-B are essential for the autocrine growth and survival signaling of MDK.[UniProtKB/Swiss-Prot Function]