

Product datasheet for **MG221948**

Mc2r (NM_008560) Mouse Tagged ORF Clone

Product data:

Product Type:	Expression Plasmids
Product Name:	Mc2r (NM_008560) Mouse Tagged ORF Clone
Tag:	TurboGFP
Symbol:	Mc2r
Synonyms:	ACTH-R; ACTHR; MC2-R
Mammalian Cell Selection:	Neomycin
Vector:	pCMV6-AC-GFP (PS100010)
E. coli Selection:	Ampicillin (100 ug/mL)
ORF Nucleotide Sequence:	>MG221948 representing NM_008560 Red=Cloning site Blue=ORF Green=Tags(s)

TTTTGTAATACGACTCACTATAGGGCGGCCGGAATTCGTCGACTGGATCCGGTACCGAGGAGATCTGCC
GCC**CGATCGCC**

ATGAAGCATATTATCAATTCGTATGAACACACCAATGACACCGCAAGAAATAACTCCGATTGTCCTGATG
TAGTTTTGCCAGAAGAGATATTTTTACAATCTCTGTCATTGGCATATTGGAGAAGTTGATTGTCCTCCT
GGCTGTGATCAAAAATAAAATCTCCAGTCCCCATGATTTTTTCATCTGCAGTTGGCCATTTCTGAC
ATGTTGGCAGTCTGTATAAGATCTTGGAAAACATCCTGATCATGTTCAGAAACATGGGTTATCTTAAGC
CTCGTGGCAGTTTTGAAAGCACAGCAGATGACATCATTGACTGCATGTTTCATCCTCTCTTTGCTGGGCTC
TATCTTCAGCCTGTCTGTATTGACAGTACCGTTACATCACCATCTCCATGCCCTGCAATACCATAGC
ATTGTGACCATGCGCCGACCATCATCACCTAACAATTATCTGGATGTTCTGCACAGGGAGCGGCATCA
CCATGGTGATCTTCTCCACCACATCCCCACAGTGCTCACCTTACATCGCTGTTCCCTTTGATGCTGGT
TTTTATCTGTGTCTCTACATCCACATGTTCTTACTTGCCCGCTCCCATGCTAGGAAGATCTTACCCTT
CCTAGAACCAACATGAAGGGTGCCATGACACTAACCATCCTTCTTGAGTCTTTCATCTTCTGTTGGGCC
CCTTTGTGCTCCATGTTCTTAAATGACCTTCTGCCAAATAACCCTTACTGTGTTTGCTACATGTCTCT
CTTCCAGGTCAATGGCATGTTGATCATGTGCAATGCAGTATTGACCCCTTATATATGCCTTTCGGAGC
CCAGAGCTCAGAGATGCATTCAAAAGGATGCTCTTCTGCAACCGGTAT

ACGCGTACGCGGCCGCTCGAG - GFP Tag - GTTTAA



[View online »](#)

Protein Sequence: >MG221948 representing NM_008560
Red=Cloning site Green=Tags(s)

MKHIINSYEHTNDTARNNSDCPDVVLPEEIFFTISVIGILENLIVLLAVIKNKNLQSPMYFFICSLAISD
 MLGSLYKILENILIMFRNMGYLKPRGSFESTADDIIDCMFILSLLGSIFSLSVIAADRYITIFHALQYHS
 IVTMRRTIITLTIWFMCTGSGITMVIFSHHIPTVLTFTSLFPLMLVFILCLYIHMFLARSHARKISTL
 PRTNMKGAMTLTILLGVFIFCWAPFVLHVLLMTFCPNNPYCVCYMSLFQVNGMLIMCNAVIDPFIYAFRS
 PELRDAFKRMLFCNRY

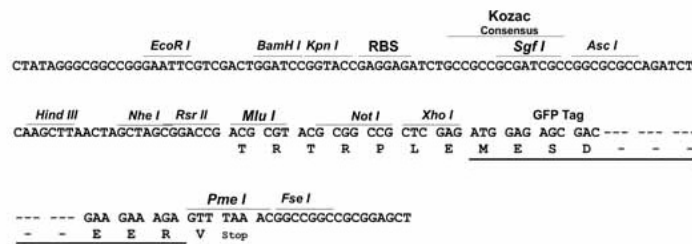
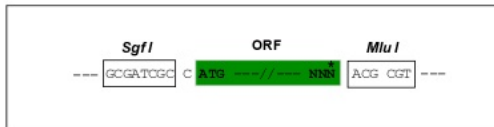
TRTRPLE - GFP Tag - V

Restriction Sites:

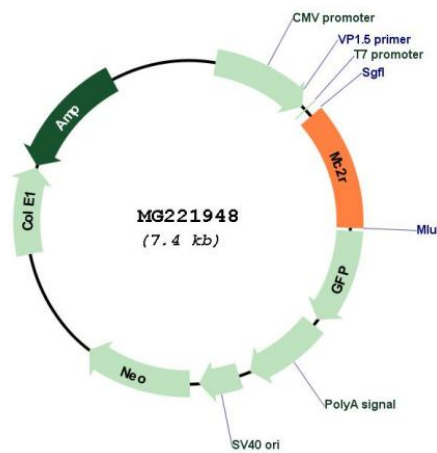
Sgfl-MluI

Cloning Scheme:

Cloning sites used for ORF Shuttling:



Plasmid Map:



ACCN: NM_008560

ORF Size: 1636 bp

OTI Disclaimer:	<p>Due to the inherent nature of this plasmid, standard methods to replicate additional amounts of DNA in E. coli are highly likely to result in mutations and/or rearrangements. Therefore, OriGene does not guarantee the capability to replicate this plasmid DNA. Additional amounts of DNA can be purchased from OriGene with batch-specific, full-sequence verification at a reduced cost. Please contact our customer care team at custsupport@origene.com or by calling 301.340.3188 option 3 for pricing and delivery.</p> <p>The molecular sequence of this clone aligns with the gene accession number as a point of reference only. However, individual transcript sequences of the same gene can differ through naturally occurring variations (e.g. polymorphisms), each with its own valid existence. This clone is substantially in agreement with the reference, but a complete review of all prevailing variants is recommended prior to use. More info</p>
OTI Annotation:	<p>This clone was engineered to express the complete ORF with an expression tag. Expression varies depending on the nature of the gene.</p>
Components:	<p>The ORF clone is ion-exchange column purified and shipped in a 2D barcoded Matrix tube containing 10ug of transfection-ready, dried plasmid DNA (reconstitute with 100 ul of water).</p>
Reconstitution Method:	<ol style="list-style-type: none">1. Centrifuge at 5,000xg for 5min.2. Carefully open the tube and add 100ul of sterile water to dissolve the DNA.3. Close the tube and incubate for 10 minutes at room temperature.4. Briefly vortex the tube and then do a quick spin (less than 5000xg) to concentrate the liquid at the bottom.5. Store the suspended plasmid at -20°C. The DNA is stable for at least one year from date of shipping when stored at -20°C.
RefSeq:	<p>NM_008560.3, NP_032586.1</p>
RefSeq ORF:	<p>891 bp</p>
Locus ID:	<p>17200</p>
UniProt ID:	<p>Q64326</p>
Cytogenetics:	<p>18 41.89 cM</p>
Gene Summary:	<p>Receptor for corticotropin (ACTH). This receptor is mediated by G proteins (G(s)) which activate adenylate cyclase (cAMP).[UniProtKB/Swiss-Prot Function]</p>