

## Product datasheet for **MG221941**

### **Slc9a3 (NM\_001081060) Mouse Tagged ORF Clone**

#### **Product data:**

Product Type:	Expression Plasmids
Product Name:	Slc9a3 (NM_001081060) Mouse Tagged ORF Clone
Tag:	TurboGFP
Symbol:	Slc9a3
Synonyms:	9030624O13Rik; AI930210; NHE-3; NHE3
Mammalian Cell Selection:	Neomycin
Vector:	pCMV6-AC-GFP (PS100010)
E. coli Selection:	Ampicillin (100 ug/mL)



[View online »](#)

ORF Nucleotide  
Sequence:

>MG221941 representing NM\_001081060  
 Red=Cloning site Blue=ORF Green=Tags(s)

TTTTGTAATACGACTCACTATAGGGCGGCCGGGAATTCGTCGACTGGATCCGGTACCGAGGAGATCTGCC  
 GCC**CGGATCGCC**

ATGTGGCACCCGGCTCTGGGACCAGGGTGAAGCTGCTGTGGCCCTGGCGCTGACCAGCCTGCAAGGCG  
 CGAGGGGGCTGAGGAGGAACCGAGCAGTGATGGGAGCTTCCAGGTGGTACCTTCAAATGGCACCCAGT  
 CCAGGATCCATACATCATTGCGCTCTGGATCCTCGTGGCCAGCTTGGCCAAAATCGTCTTTCACCTGTCC  
 CACAAGGTACCAGTATCGTCCCGAGAGTGCTCTACTCATCGTTCTGGGCTGGTGTGGGTGGCATCG  
 TCTGGGCAGTGACCACATCGCCTCCTTACACTCACACCACGCTCTTCTTCTTCTACCTGCTGCCCCC  
 TATTGTGTGGATGCTGGATACTTCATGCCAATCGACTCTTCTTTGGCAACCTGGGCACCATTCTGCTA  
 TATGCTGCATTGGCACTATATGGAATGCAGCCACCACAGGATTGTCCCTCTATGGTGTCTTCTCAGTG  
 GCTTGATGGGTGAACTGAAAATGGACTCCTGGATTTCTTGTGTTTGGTAGCCTCATTGCAGCTGTGGA  
 CCCAGTGGCTGTCTGGCTGTGTTTGGGAAGTCCATGTCAATGAAGTCTTTCATCATTGTCTTTGGG  
 GAGTCACTGCTGAATGATGCAGTACTGTGGTCTTGTACAATGTTTTGAGTCTTTTGTGACACTGGGTG  
 GTGACGCAGTACTGGCGTGGATTGTGTGAAAGGCATAGTGCCTTCTCGTGGTGGCCTGGGGGGCAC  
 TCTGGTGGGTGTTATCTTCGCCTTCTGCTGTCCTTGGTACTCGCTTACCAAGCATGTGCGTATCATC  
 GAGCCTGGCTTCGTCTTTGTCAATTCCTACCTGTCCTATCTGACCTCCGAGATGCTGTCTTTGTCAATCA  
 TCCTGGCCATCACCTTTTGGCGCATCTGCTGTGAGAAGTACGTGAAGGCCAACATCTCAGAGCAGTCGGC  
 CACCACTGTGCGTACACTATGAAGATGCTGGCAGTGGAGCAGAGACCATTATCTTTATGTTCTGGGT  
 ATCTCAGCTGTGAACCCCGACATCTGGACATGGAACACAGCTTTTGTGTTGCTGACACTGGTCTTCATTT  
 CTGTATATCGAGCCATTGGTGTGTTCTGCAGACCTGGATCCTGAATCGTACAGAAATGGTGGTGTGAG  
 AACCATTTGACCAGGTGGTCAATGTCTATGGTGGCCTGCGTGGGGCAGTGGCCTATGCCTTGGTGGTACTT  
 CTGGATGAGAAGAAAGTCAAGGAGAAAAATCTGTTTGTGACGACCACTCTCATTGTGTTTTCTTACAG  
 TCATCTTTAGGGCCTGACCATTAAGCCCTGGTGCAGTGGTGAAGGTGAAGAGGAGCGAGCATCGTGA  
 GCCAAAGCTCAATGAGAAGCTACATGGCCGGGCTTTGACACACATCCTCTCAGCCATTGAGGACATCTCA  
 GGACAAATTGGACACAATTACCTCAGAGATAAGTGGTCCAATTTTACCAGGAAAGTTCCTCAGCAAAGTCC  
 TCATGAGAAGATCTGCTCAAAAATCTCGAGATCGGATCCTGAATGTTTTCCATGAGCTGAATTTGAAGGA  
 TGCTATCAGCTATGTGGCTGAGGGAGAGCGCCGTGGGTCCCTGGCCTTATTGCTCCCCAAGTACGGAC  
 AATATGGTCAATGTGGACTTCAACACACCCCGCCATCTACTGTGGAGGCGTCTGTCTCATATTTCTTGA  
 GGGAAAATGTCAGTGCTGTATGCCTGGACATGCAGTCTTGAACAGAGCGGAGGAGCATCCGTGACAC  
 CGAGGACATGGTCAACCACACACTGCAACAGTACCTGTACAAGCCTCGGCAGGAGTACAAGCATCTC  
 TATAGTCGGCACGAGCTAACACCAATGAGGATGAAAAGCAGGACAAGGAAATCTTTCACAGAACCATGA  
 GGAAGCGCCTGGAGTCTTTAAGTCAAGTAAAGTCAAGGATCAACCAGAATAAGAAGGCGGCCAAGCTGTA  
 CAAGAGGGAGCGGCACAGAAGCGGAGGAATAGCAGCATTCCTAATGGGAAACTGCCTATGGAGAACCCTG  
 GCACACAACACTACCATCAAGGAGAAAGATTTGGAACCTTTCAGAGCATGAGGAGGCCACCAACTATGAAG  
 AGATCAGTGGAGGCATTGAGTTTCTGGCCAGTGTACCCAGGATGTAGCCTCTGACTCTGGGGCAGGAAT  
 TGATAATCCCCTGTTCTCCCCTGATGAGGATCTGGACCAAGCATCCTATCCAGGGTCCACCCTGGCTG  
 TCCCCTGGGGAGACCGTGGTGCCTCCAGAGGGCCCGTGTTCAGATTCCAAACTCTCCAGCAACTTCC  
 GCCGCTGACACCATTCCGCTCAGCAAAAATCCGTGGATTCTTCTGCAAGGCTGATGGCCACGAGGA  
 ACAGCTCAACCGGCTGCCCCGAGTCCACACATG

**ACCGT**ACGCGGCCGCTCGAG - GFP Tag - GTTTAA

**Protein Sequence:** >MG221941 representing NM\_001081060  
 Red=Cloning site Green=Tags(s)

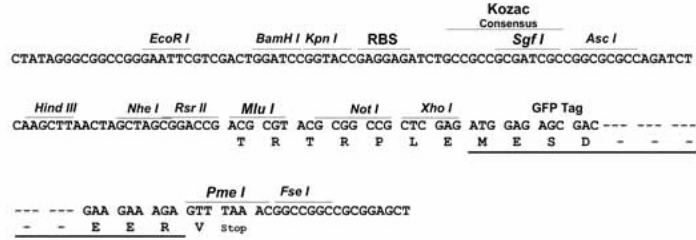
```
MWHRALGPGWKLALLALATSLQGARGAEIEPSSDGSFQVVTFKWHHVQDPYIIALWILVASLAKIVFHLS
HKVTSIVPESALLIVLGLVLGGIVWAADHIASFTLTPTLFFFYLLPPIVLDAGYFMPNRLFFGNLGTILL
YAVIGTIWNAATTGLSLYGVFLSGLMGELKIGLLDFLLFGSLIAAVDPVAVLAVFEEVHVNEVLFIIIVFG
ESLLNDAVTVVL YNVFESFVTLGGDAVTGVDKGVISFFVVSLLGGTLVGVIFAFLLSLVTRFTKRVRII
EPGFVFI SYLSYLTSEMLSLSSILAITFCGICCCQKYVKANISEQSATTVRYTMKMLASGAETIIFMFLG
ISAVNPDITWNTAFVLLTLVFI SVYRAIGVVLQWILNRYRMVQLETIDQVVM SYGGLRGAVAYALVVL
LDEKKVKEKNLFVSTTLIVVFFTVIFQGLTIKPLVQWLKVKRSEHREPKNLNEKLHGRAFDHILSAIEDIS
GQIGHNYLRDKWSNFDRKFLSKVLMR RSAQKSRDRILNVFHELNLKDAISYVAEGERRGSLAFIRSPSTD
NMVNVDNFNTPRPSTVEASVSYFLRENVSAVCLDMQSLEQRRRSIRDTE DMVTHHTLQQYL YKPRQEYKHL
YSRHELTPNEDEKQDKEIFHRTMRKRLESFKSAKLGINQNKKA AKLYKRERAQKRRNSSIPNGKLP MENL
AHNYTIKEKDLELSEHEEATNYEEISGGIEFLASVTQDVASDSGAGIDNPV FSPDEDLDP SILSRVPPWL
SPGETVVPSQRARVQIPNSPSNFRRLTPFRLSNKSVDSFLQADGHEEQLPAAPESTHM
```

TRTRPLE - GFP Tag - V

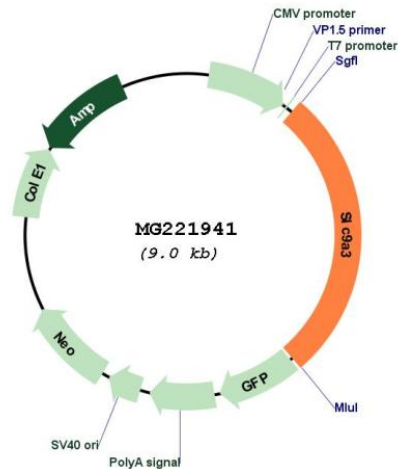
**Restriction Sites:** Sgfl-MluI

Cloning Scheme:

Cloning sites used for ORF Shutting:



Plasmid Map:



ACCN: NM\_001081060

ORF Size: 2487 bp

OTI Disclaimer: The molecular sequence of this clone aligns with the gene accession number as a point of reference only. However, individual transcript sequences of the same gene can differ through naturally occurring variations (e.g. polymorphisms), each with its own valid existence. This clone is substantially in agreement with the reference, but a complete review of all prevailing variants is recommended prior to use. [More info](#)

OTI Annotation: This clone was engineered to express the complete ORF with an expression tag. Expression varies depending on the nature of the gene.

Components: The ORF clone is ion-exchange column purified and shipped in a 2D barcoded Matrix tube containing 10ug of transfection-ready, dried plasmid DNA (reconstitute with 100 ul of water).

Reconstitution Method:

1. Centrifuge at 5,000xg for 5min.
2. Carefully open the tube and add 100ul of sterile water to dissolve the DNA.
3. Close the tube and incubate for 10 minutes at room temperature.
4. Briefly vortex the tube and then do a quick spin (less than 5000xg) to concentrate the liquid at the bottom.
5. Store the suspended plasmid at -20°C. The DNA is stable for at least one year from date of shipping when stored at -20°C.

RefSeq: [NM\\_001081060.2](#)

RefSeq Size: 2490 bp

RefSeq ORF: 2490 bp

Locus ID: 105243

UniProt ID: [G3X939](#)

**Cytogenetics:** 13 40.15 cM

**Gene Summary:** Involved in pH regulation to eliminate acids generated by active metabolism or to counter adverse environmental conditions. Major proton extruding system driven by the inward sodium ion chemical gradient. Plays an important role in signal transduction.  
[UniProtKB/Swiss-Prot Function]