

## Product datasheet for **MG221912**

### Gabpb2 (NM\_172512) Mouse Tagged ORF Clone

#### Product data:

Product Type:	Expression Plasmids
Product Name:	Gabpb2 (NM_172512) Mouse Tagged ORF Clone
Tag:	TurboGFP
Symbol:	Gabpb2
Synonyms:	1810015F01Rik; 5830427M07; 9430006E19Rik; A430024B14Rik; AV050852; Gabpb2-1
Mammalian Cell Selection:	Neomycin
Vector:	pCMV6-AC-GFP (PS100010)
E. coli Selection:	Ampicillin (100 ug/mL)
ORF Nucleotide Sequence:	>MG221912 representing NM_172512 Red=Cloning site Blue=ORF Green=Tags(s)

TTTTGTAATACGACTCACTATAGGGCGGCCGGAATTCGTCGACTGGATCCGGTACCGAGGAGATCTGCC  
GCC**CGATCGCC**

ATGTCTCTGGTGGACTTGGGGAAGAGGCTGCTAGAAGCTGCAAGGAAAGGCCAAGACGATGAAGTGAGGA  
CACTGATGGCAAATGGGGCTCCATTCACCACAGACTGGCTCGGAACATCACCGCTTCACCTTGCAGCCCA  
GTATGGTCATTATCCACAGCAGAAGTGTCTCGAGCTGGCGTTAGCAGGGATGCCCGGACCAAAGTG  
GACAGGACCCCTTGCATATGGCTGCAGCTGATGGACATGTTACATCGTGGAACTGCTTGTAGGAGTG  
GTGCAGATGTGAACGCAAAGGACATGCTGCAGATGACAGCTCTGCACTGGCCACAGAGCACCATCACCG  
GGATGTCGTCGAGTTACTTATCAAATATGGAGCTGATGTCTACGCTTTTAGCAAATTTGATAAGTCTGCC  
TTTGACATAGCAATGGAGAAAAACAATACTGAGATTTTGGTCATGCTTCAGGAAGCAATGCGAATCAGG  
TGAACACTAACCACGAGAGAGCCAAACCCAGTGGCTAACCTGTGACTGTGACTGTCCGTTTCATCTTCAC  
CTCTGGAGAGGTCATTAACTCGCTAGCTTTGTCTCTTCAGCCAAACCAAAGCAACCTCAGCTCATTTA  
GAAGAAATGGAAGAAGGAAATCTTGTACTCTCGACCCAGCAAGTGGTGGGGAGTGGAGGCCAGAGGG  
TCATCACCATCGTACTGATGGAGTCCCTCTGGGTAACATCCAACATCACTCCCTGTGGAGGCATTGG  
CCAGCCATTTATTGTAAGTGAAGAAGAGGAAGAAGAGAAATGCCATTGGTGAAGAGCAAGGATGGCAG  
GAGACAATAATTGAAGATGAAGAAGAGGAAGAAGAGAAATGCCATTGGTGAAGAGCAAGGATGGCAG  
AGATGACAAACAGGGTTGAGGAAATGAAGGAAGGCAAGTGAAGAGAGCTACTGCAGCAACAGCTCCAGGA  
GGCCAACCGAAGAGCCAGGAGTACAGACACCAGCTCCTCAAGAAAGAGCAGGAGCCGAGCAGTATCGG  
CTCAGGCTGGAGGCTATGGCTCAGCAGCAGACCAACGGAGTTGAAGTTGATGTCACCGTAGTTGAGGAAG  
TAGCTGAAGTGGATGCTGTAGTGGTGACAGAAGGGGACGAGGTAGAAAGAGCAACACAAGTCATGAAGTC  
AGGAAGGACCACGGAGCCTCACACTAACGTTTCCATAGAACTATTTTCATCC

**ACGCGT**ACGCGGCCGCTCGAG - GFP Tag - GTTTAA



[View online »](#)

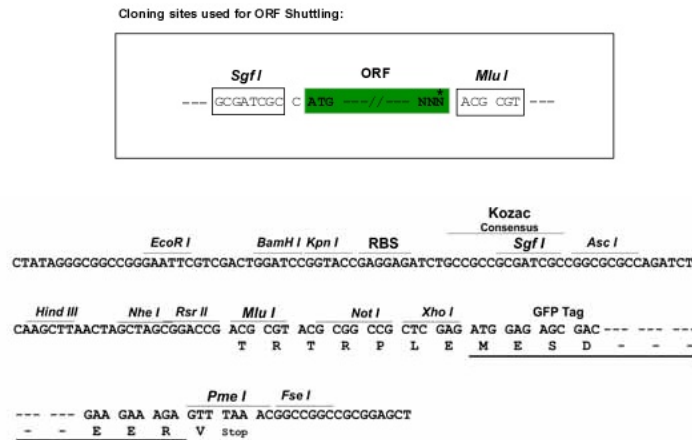
**Protein Sequence:** >MG221912 representing NM\_172512  
 Red=Cloning site Green=Tags(s)

MSLVDLGKRLLEAARKGQDDEVRTL MANGAPFTD DLGTSPLHLAAQYGHYSTAEVLLRAGVSRDARTKV  
 DRTP LHM AAADGHVHIV ELLV RSGADVN AKDMLQMTALHWATEHHHRDVVELLIKYGADVYAFSKFDKSA  
 FDIAMEKN NTEILV MLQEAMQNQVNTNHERANPVANPVTVTAPFIFTSGEVINLASFVSSANTKATSAHL  
 EEMEEGNSLDSSTQQVVGSGGQRVITIVTDGVPLGNIQTS L P A G G I G Q P F I V T M Q D G Q Q V L T V P A G Q V A E  
 ETIIIEDEEEEEK L P L V K R P R M A E M T N R V E E M K E G S E R E L L Q Q Q L Q E A N R R A Q E Y R H Q L L K K E Q E A E Q Y R  
 L R L E A M A Q Q T N G V E V D V T V V E E V A E V D A V V V T E G D E V E R A T Q V M K S G R T T E P H T N V S I E T I S S

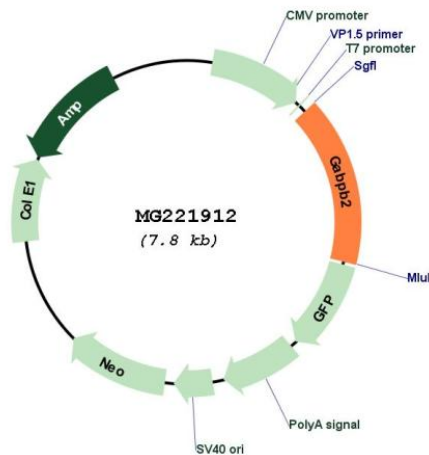
TRTRPLE - GFP Tag - V

**Restriction Sites:** SgfI-MluI

**Cloning Scheme:**



**Plasmid Map:**



**ACCN:** NM\_172512

<b>ORF Size:</b>	1242 bp
<b>OTI Disclaimer:</b>	The molecular sequence of this clone aligns with the gene accession number as a point of reference only. However, individual transcript sequences of the same gene can differ through naturally occurring variations (e.g. polymorphisms), each with its own valid existence. This clone is substantially in agreement with the reference, but a complete review of all prevailing variants is recommended prior to use. <a href="#">More info</a>
<b>OTI Annotation:</b>	This clone was engineered to express the complete ORF with an expression tag. Expression varies depending on the nature of the gene.
<b>Components:</b>	The ORF clone is ion-exchange column purified and shipped in a 2D barcoded Matrix tube containing 10ug of transfection-ready, dried plasmid DNA (reconstitute with 100 ul of water).
<b>Reconstitution Method:</b>	<ol style="list-style-type: none"><li>1. Centrifuge at 5,000xg for 5min.</li><li>2. Carefully open the tube and add 100ul of sterile water to dissolve the DNA.</li><li>3. Close the tube and incubate for 10 minutes at room temperature.</li><li>4. Briefly vortex the tube and then do a quick spin (less than 5000xg) to concentrate the liquid at the bottom.</li><li>5. Store the suspended plasmid at -20°C. The DNA is stable for at least one year from date of shipping when stored at -20°C.</li></ol>
<b>RefSeq:</b>	<a href="#">NM_172512.2</a> , <a href="#">NP_766100.1</a>
<b>RefSeq Size:</b>	8606 bp
<b>RefSeq ORF:</b>	1245 bp
<b>Locus ID:</b>	213054
<b>UniProt ID:</b>	<a href="#">P81069</a>
<b>Cytogenetics:</b>	3 40.74 cM
<b>Gene Summary:</b>	Transcription factor capable of interacting with purine rich repeats (GA repeats). Must associate with GABP-alpha to bind DNA.[UniProtKB/Swiss-Prot Function]