

Product datasheet for **MG221907**

Ankzf1 (NM_026187) Mouse Tagged ORF Clone

Product data:

Product Type:	Expression Plasmids
Product Name:	Ankzf1 (NM_026187) Mouse Tagged ORF Clone
Tag:	TurboGFP
Symbol:	Ankzf1
Synonyms:	1300008P06Rik; 2810025E10Rik; D1Ertd161e
Mammalian Cell Selection:	Neomycin
Vector:	pCMV6-AC-GFP (PS100010)
E. coli Selection:	Ampicillin (100 ug/mL)



[View online »](#)

ORF Nucleotide Sequence:

>MG221907 representing NM_026187
 Red=Cloning site Blue=ORF Green=Tags(s)

TTTTGTAATACGACTCACTATAGGGCGGCCGGGAATTCGTCGACTGGATCCGGTACCGAGGAGATCTGCC
 GCC**CGGATCGCC**

ATGCCAAACCGCTGGCGATGCGGCAGTAGGATCTCGTTCTGGAGAGTTGTTTCTGCCCTCCGTTTCTT
 CTTCAGCCACGTCGCCAGCTCCAAGTGCAGCCTCAGCCCCTGCCTCCGTTTCCCTGTTGTCCCTCAACGG
 GGAAGCTCCACTCATTCCGGGCCTGAGCCTGGTGAAGCAAGCTCCTGGGAGGCTCTGGCCTGGGCGCCG
 CGTACTTCTGTCCAGGAGAGAACAAGCTCGGGGGAAAAGTATCTCCATATTCTCTGGAAATTTAG
 AGAAATATTTTGTTCAGCCTGTGACCAGATCTCCAGAACCACAGGAACAGAGAGAACATTATAAGCT
 TGATTGGCATCGCTTTAACTTAAAACAACGTCTCAAGAACAAGCCTCTCCTGTCTGCTTCAGACTTTGAA
 CAGCAAAGCTCCACAGGGGATCTTTCCAGCATCTCAGGATCAGATGACACAGACTCCAGCAGTGAAGAGG
 ACTTGCTGCCACTGGATGAGGGGAGGGCTGAATCCGAGAAACCTAACCGGCCCCCGGATTTCTACCACA
 TCGGGTCTTTTCAAAAACGCCAGGGCCAGTTTCTTTATGCCTATCGTTGTCTTAGGCCCTCACCAG
 ATTCCCCCAGAAAAGGCAGAAATGCTACTACAAAACCTACAGAATGGAGGTCCCAGATACTACGTGGTGC
 TCATGGCTGCGGCTGGACATTTTGTGGTGCATTTTCAAGGAAGAGAAGTGGTGGCACACAAAACCTT
 TCACCGTTACTGTGCGGGCAAGCGGGCACAGCCCAGGGGCTTACAGGATGCCCATGGTAGGGATCC
 CGCTCTGTGGAGCAACTTGAGGCGTTACAATGAAGCCATGCTCTATAAGGATGTTTCGCAACCTGCTGG
 CGGGGCCAATCTGGTCCAAGGCACTAGGGGAGGCAGAAACAGTATTGTTCCGAGCACCACGCTCTGGCCG
 GTCCTTGTCTTTGGAGGCCAAGGGCACCCCTACAAAGGGATGATCCCCGACTTTGGGATATCCCTCTC
 ACCACCCGACAGCCACTTTTGGAGAGCTCCAGCGTGTACTCCATAAGCTGACCACCTTGCAAGTGTATG
 ATGAAGACCTTCGAGAAATGGTCAGATTTCACTCTCCTGAGACACACTGGAAACCAGTGAGAGAAGAGAG
 GAAAAAGGATACTGAGAAAGAAAAACAAGGTCCCCAGTGATGCAAATAAGCCCTTGGCAGGATGAA
 GAACCACTCAAACAAGGTTCAAGTCTCAGGAAGAAGATGGTTCGAAAGTAGAGTTGGAGCTAGTAGAAT
 TGACCCTGGGACCCTGGATCTTCGTGAATTTGAAGTACTGCCAAGCGGAGGAGGAGGAAGAAGAA
 GGAGAGAAGTCAAGAGCAGCAGTGTGGGCACATGGGCCTCTTCCTCAGCAACCTCAAGATGAGCCGTT
 TCACAGCAACCCCAAGAGGTTGAAACCCATTGGATACTTTGGTCTATGAGGCCAAGCCCTGGTCAGC
 CAGAGCTCTGGGACACGCTTCTAGCTGCTTGTCTGCTGGGAAGTTGAGGTGCTAAAGCTGCAGCTAGC
 CACTGGGCTGGTAGACCCTGGAGTTAAGTCCCTGCTCAATGCCCTTTGGGCTCCGGTGGCTTTACTCTC
 CTGCATGCAGCAGCCGAGCTGGAAGAGGCTTAGTAGTTCGTTTGTGTTGGAAGCAGGTGCTGATCCTA
 CTGTGCAGGACTTAGGGCTCGGCCACCTTATACTGTAGCAGCTGACAAATCAACGCGTAATGAATCCG
 GAGGTTTATGGAGAAGAATCTTGATGCCTATGATTACAACAAGGCTCGGGTGCCAGGGCCATTGACTCAA
 GAAATGGAGGCCCGGAGGCTACAAGGAAAAAGAGCAGAAGGCAGCTCGACGGCAACGGGAGCAACAGC
 AGCGGAAGCAGAGGGAGCAGGAAGAACAAGAGCAAGAGGAACAACGGCGGTTTGTGCCCCTCAGTGACCG
 GGAGAAGAGAGCTCTGGCTGCAGAGCGCCGACTTGCTGCCAGTTGGGAGCCCTAGCCCTCCAGTTCT
 GACTCTGCAGTTGCTAGTGTGGACGCTGCTGGAGTTGTGGAGTGTCCCTCCAAGGCCTATTCCCTTTC
 ACTACTCGACTTCTCTTTCTGCTCCACACGTTGCCTTCGAGACCATCGCAGTCAGGCGGGGAGACCTTC
 ATCT

AG**CGGACCC**ACGCGTACGCGGCCGCTCGAG - GFP Tag - GTTTAA

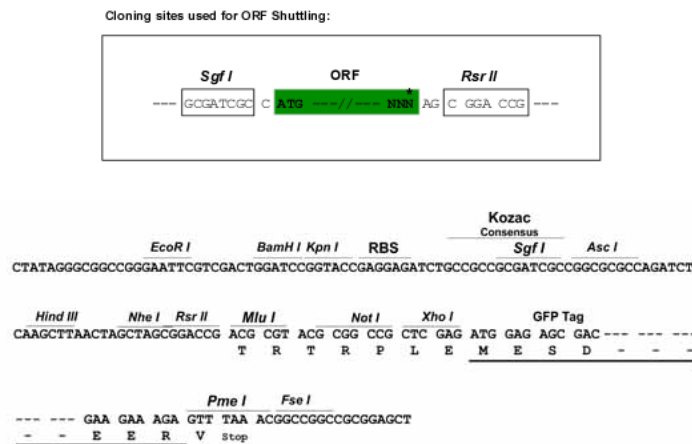
Protein Sequence: >MG221907 representing NM_026187
 Red=Cloning site Green=Tags(s)

```
MAKPAGDAAVGSRSSELFLPSVSSSATSPAPSAASAPASVSLLSLNGEAPLIRGLSLVSQAPGEALAWAP
RTSCPGENTSSGGKVPSPYSLEISEKLFCSACDQIFQNHQEQREHYKLDWHRFNKQRLKNKPLLASDFE
QQSSTGDLSSISGSDDTSSSEEDLLPLDEGRAESEKPNRPPGFYPHRVLFKNAQQQFLYAYRCVLGPHQ
IPPEKAELLLQNLQNGGPRYYVVLMAAAGHFAGAIQGREVVVHKTFRHYTVRAKRGTAQGLQDAHGRAS
RSAGANLRRYNEAMLKDVNRLLAGPIWSKALGEAETVLFRAPRSGRSLFFGGQGAPLQRDDPRLWDIPL
TTRRPTFGELQRVLHKLTTLVYDEDPREMRVRFHSPETHWKPVREERKDKTEKEKTKVPSDANKPLGQDE
EPLKQGSSEQEDGSEVELELVELTLGLDLREFEVLPKRRRRRKKKERSQEQCGAHGPLPQQPQDEPF
SQPTQEVETPLDLTVYEAKAPGQPELWDTLLAACRAGEVEVLKQLATGLVDPGVKSLNAPLGGSGFTL
LHAAAAAGRGLVVRLLEAGADPTVQDSRARPPYTVAAADKSTRNEFRFMEKNLDAVDYDKARVPGPLTQ
EMEARQATRKEQKAARRQREQQQRKQREQEEQEEQRRFAALSDREKRALAAERRLAAQLGAPSPVPV
DSAVASAGRCWSCGVSLQGLIPFHYLDFSFCTRCLRDHRSQAGRPS
```

SGPTRRRLE - GFP Tag - V

Restriction Sites: SgfI-RsrII

Cloning Scheme:



ACCN: NM_026187

ORF Size: 2244 bp

OTI Disclaimer: The molecular sequence of this clone aligns with the gene accession number as a point of reference only. However, individual transcript sequences of the same gene can differ through naturally occurring variations (e.g. polymorphisms), each with its own valid existence. This clone is substantially in agreement with the reference, but a complete review of all prevailing variants is recommended prior to use. [More info](#)

OTI Annotation: This clone was engineered to express the complete ORF with an expression tag. Expression varies depending on the nature of the gene.

Components: The ORF clone is ion-exchange column purified and shipped in a 2D barcoded Matrix tube containing 10ug of transfection-ready, dried plasmid DNA (reconstitute with 100 ul of water).

Reconstitution Method:

1. Centrifuge at 5,000xg for 5min.
2. Carefully open the tube and add 100ul of sterile water to dissolve the DNA.
3. Close the tube and incubate for 10 minutes at room temperature.
4. Briefly vortex the tube and then do a quick spin (less than 5000xg) to concentrate the liquid at the bottom.
5. Store the suspended plasmid at -20°C. The DNA is stable for at least one year from date of shipping when stored at -20°C.

RefSeq: [NM_026187.5](#), [NP_080463.3](#)

RefSeq Size: 2752 bp

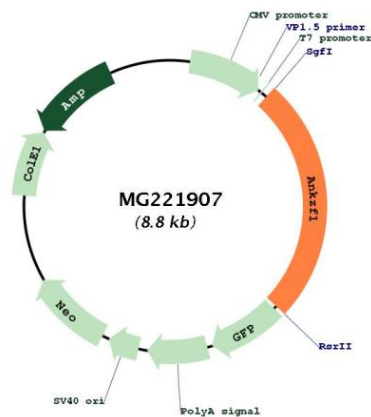
RefSeq ORF: 2247 bp

Locus ID: 52231

Cytogenetics: 1 38.62 cM

Gene Summary: Plays a role in the cellular response to hydrogen peroxide and in the maintenance of mitochondrial integrity under conditions of cellular stress (By similarity). Involved in the endoplasmic reticulum (ER)-associated degradation (ERAD) pathway (By similarity). [UniProtKB/Swiss-Prot Function]

Product images:



Circular map for MG221907