

Product datasheet for **MG221898**

Pfkm (NM_001163488) Mouse Tagged ORF Clone

Product data:

Product Type:	Expression Plasmids
Product Name:	Pfkm (NM_001163488) Mouse Tagged ORF Clone
Tag:	TurboGFP
Symbol:	Pfkm
Synonyms:	A1131669; ATP-PFK; Pfk-4; PFK-A; PFK-M; Pfk4; Pfka; Pfkx
Mammalian Cell Selection:	Neomycin
Vector:	pCMV6-AC-GFP (PS100010)
E. coli Selection:	Ampicillin (100 ug/mL)



[View online »](#)

ORF Nucleotide
Sequence:

>MG221898 representing NM_001163488
 Red=Cloning site Blue=ORF Green=Tags(s)

TTTTGTAATACGACTCACTATAGGGCGGCCGGGAATTCGTCGACTGGATCCGGTACCGAGGAGATCTGCC
 GCC**CGCATCGCC**

ATGACCCATGAAGAGCATCATGCAGCCAAAACCCTGGGGATCGGCAAGGCCATCGCCGTGTGACCTCTG
 GTGGAGATGCCCAAGGTATGAATGCTGCCGT CAGGGCTGTGGTCCGAGTTGGTATCTTCAGGGCGCCCG
 CGTCTTCTTTGTCCATGAGGGTTACCAAGGCTGGTGGACGGTGGCGAGCACATCAGGGAGGCCACGTGG
 GAGAGCGTGTCTATGATGCTTCAGCTGGGTGGCACAGTGATTGGAAGTGCCCGATGCAAGGACTCCGGG
 AGCGAGAAGGACGACTCCGGGCCGCCACAACCTGGTGAAGCGGGGGATACCAATCTGTGTGCATCGG
 AGGCGATGGCAGCCTCACTGGGGCTGACACTTCCGTTCCAGAGTGGAGCGACTTGTGAATGATTTCCAG
 AAAGACGGGAAGATCACAGCCGAGGAGGCTACAAAGTCCAGCTACCTGAACATCGTGGCCCTGGTTGGCT
 CAATCGACAATGACTTCTGTGGCACTGATGACCATTGGTACTGACTCTGCCCTGCACAGGATTGTGGA
 GATCGTAGACCCATCACCACCAGGCTCAGAGCCACCAGAGGACGTTTGTGTTAGAAGTATGGGCCGC
 CACTGTGGATACCTGGCCCTTGTACCTCTCTGTCTGTGGGGCCGACTGGGTTTTATTCTGAGTGTG
 CGCCAGACGATGACTGGGAAGAACACCTTTGTCGCCGGCTCAGTGAGACAAGGACCCGTGGCTCTCGTCT
 CAACATCATATTGTTGCTGAAGGTGCCATCGACAAGAACGGGAAGCCAATCACCTCAGAAGACATCAAG
 AACCTGGTGGTGAAGCGCCTTGGATATGACACCCGGGTCACTGTTCTGGGACATGTACAGCGGGTGGGA
 CACCATCAGCCTTTGACCGGATCCTGGGCAGCAGGATGGGTGTGGAAGCAGTGTGGCACTTTTGGAGGG
 GACCCAGACACCCAGCCTGTGTGGTGAAGCTCTCTGGTAACCAGGCTGTGCGTTTCCCTCATGGAG
 TCGGTGCAGGTGACCAAGACGTGACCAAGGCTATGGATGAGAAGAGATTGATGAAGCCATTAAGCTAA
 GAGGCCGGAGCTTCATGAACAACCTGGGAGGTATACAAGCTTCTAGCTCATGTCAGACCCCAAGTCTCTAA
 GGGTGGGTTGCACACAGTGGCCGTGATGAATGTGGGGGCCAGCTGCTGGCATGAATGCCGCTGTTCCG
 TCTACCGTGAGGATTGGCCTTATCCAGGCAACCGGGTGTGGTGTACATGATGGCTTTGAGGGTCTGG
 CCAAAGGTGAGATTGAGGAGGCTGGCTGGAGCTATGTTGGAGGCTGGACTGGTCAAGGTGGTTCCAACT
 TGGTACTAAAAGGACTCTCCCAAGAAGAACCTGGAACAGATCAGTGCCAACATAACCAAGTTTAAACATC
 CAGGGCCTTGTGCATATTGGGGCTTTGAGGCTTACACAGGGGGCTTGGAGCTGATGGAAGGCAGGAAGC
 AGTTTGTGAGCTCTGCATCCCGTTTGTGGTCAATCCGGCCACGGTTTCCAATAACGTCCCTGGGTGAGA
 CTTGAGCATCGGGCTGACACAGCACTGAACACCATCTGCACGACTTGTGACCGAATCAAGCAGTCTGCA
 GCAGGCACCAAACGTGGGTGTTTATCATCGAGACTATGGGTGGCTACTGTGGCTACCTGGCCACCATGG
 CAGGGCTGGCCGCTGGGGCTGATGCTGCCTACATTTTTGAGGAACCCCTCACCATTCGCGATCTCCAGGT
 GAATGTTGAACATCTGGTGCAGAAGATGAAAACAACCTGTGAAGAGAGGCCTGGTGTGAGGAATGAGAAA
 TGCAATGAGAATACTACTACTGACTTCAATTTTCAACCTGTACTCTGAGGAGGGGAAGGGCATCTTTGACA
 GCAGGAAGAACGTGCTTGGCCACATGCAGCAGGGTGGAAAGCCAACTCCCTTTGACAGGAATTTGCCAC
 TAAGATGGGTGCTAAGGCTATGAACTGGATGTCTGGGAAAATCAAGGAGAGTTACCGTAATGGACGGATC
 TTTGCCAACCCCTGACTCAGGCTGCGTTCTGGGGATGCGTAAGAGGGCCCTGGTCTTTCAGCCAGTAA
 CTGAGCTGAAGGACCAGACAGACTTTGAACACCGAATCCCAAAGAACAGTGGTGGCTGAAGCTGAGGCC
 AATCCTCAAATCCTAGCCAAGTACGAGATTGATCTGGACACCTCCGACCACGCCACCTGGAGCACATT
 TCAAGGAAACGGTCTGGAGAAGCCGCCGTC

ACGCGTACGCGGCCGCTCGAG – GFP Tag – GTTTAA

Protein Sequence: >MG221898 representing NM_001163488
 Red=Cloning site Green=Tags(s)

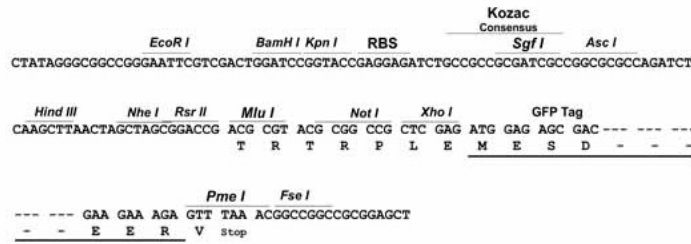
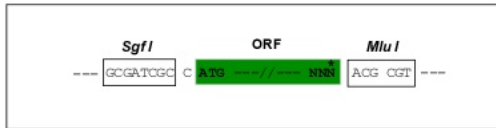
MTHEEHHAAKTLGIGKIAVLTSGGDAQGMNAAVRAVVRVGI FTGARVFFVHEGYQGLVDGGEHIREATW
 ESVSMMLQLGGTVIGSARCKDFREREGRLRAAHNLVKRGITNL CVIGGDGSLTGADTFRSEWSDLLNDFQ
 KDGKITAEAEATKSSYLNIVGLVGSIDNDFCGTDMTIGTDSALHRIVEIVDAITTTAQSHQRTFVLEV MGR
 HCGYLALVTSLSGADWVFIPECPPDDWEEHLCRRLSETRTRGSR LNIIVAEGAIDKNGKPITSEDIK
 NLVVKRLGYDTRVTVLGHVQRGGTSAFDRILGSRMGVEAVMALLEGTPDTPACVVVSLSGNQAVRLPLME
 CVQVTKDVTKAMDEKRFDEAIKLRGRSFMNNWEVYKLLAHVRPPVSKGGLHTVAVMNVGAPAAGMNAAVR
 STVRIGLIQGNRVLVVDHGFELAKGQIEEAGWSYVGGWTQGGSKLGT KRTLPKKNLEQISANITKFNI
 QGLVIIGGFEAYTGGLELMEGRKQFDEL CIPFVVIPATVSNNVPGSDFSIGADTALNTICTTCDRIKQSA
 AGTKRRVFI IETMGGYCYLATMAGLAAGADAAYIFEFPFTIRD LQVNVEHLVQKMKTTVKRGLVLRNEK
 CNENYTTDFIFNLYSEEGKIFDSRKNVLGHMQGGSP TPFDRNFATKMGAKAMNWMGKIKESYRNGRI
 FANTPDSGCVLGMRKRALVFQPVELKDQTD FEHRIPKEQWLLKLRPILKILAKYEIDLDTSDHAHLEHI
 SRKRSGEAAV

TRTRPLE - GFP Tag - V

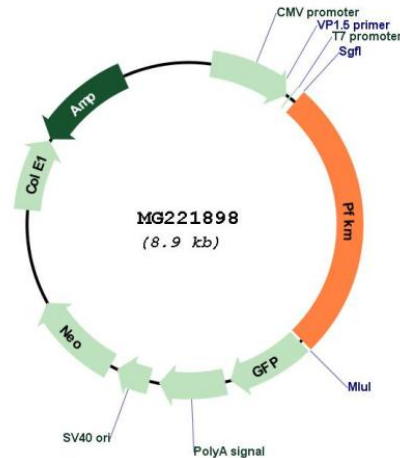
Restriction Sites: SgfI-MluI

Cloning Scheme:

Cloning sites used for ORF Shuttling:



Plasmid Map:



ACCN: NM_001163488

ORF Size: 2340 bp

OTI Disclaimer: The molecular sequence of this clone aligns with the gene accession number as a point of reference only. However, individual transcript sequences of the same gene can differ through naturally occurring variations (e.g. polymorphisms), each with its own valid existence. This clone is substantially in agreement with the reference, but a complete review of all prevailing variants is recommended prior to use. [More info](#)

OTI Annotation: This clone was engineered to express the complete ORF with an expression tag. Expression varies depending on the nature of the gene.

Components: The ORF clone is ion-exchange column purified and shipped in a 2D barcoded Matrix tube containing 10ug of transfection-ready, dried plasmid DNA (reconstitute with 100 ul of water).

Reconstitution Method:

1. Centrifuge at 5,000xg for 5min.
2. Carefully open the tube and add 100ul of sterile water to dissolve the DNA.
3. Close the tube and incubate for 10 minutes at room temperature.
4. Briefly vortex the tube and then do a quick spin (less than 5000xg) to concentrate the liquid at the bottom.
5. Store the suspended plasmid at -20°C. The DNA is stable for at least one year from date of shipping when stored at -20°C.

RefSeq: [NM_001163488.1](#), [NP_001156960.1](#)

RefSeq Size: 2830 bp

RefSeq ORF: 2343 bp

Locus ID: 18642

UniProt ID: [P47857](#)

Cytogenetics: 15 F1

Gene Summary: Catalyzes the phosphorylation of D-fructose 6-phosphate to fructose 1,6-bisphosphate by ATP, the first committing step of glycolysis.[UniProtKB/Swiss-Prot Function]